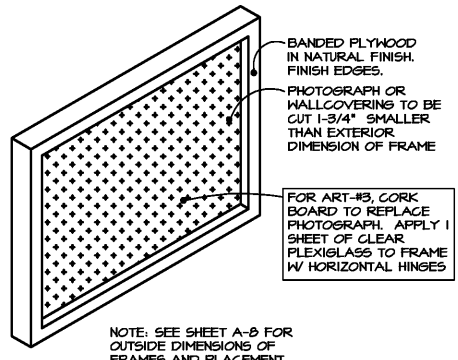


1 CURB AT ELEC. SWITCHGEAR

1 A-9.1

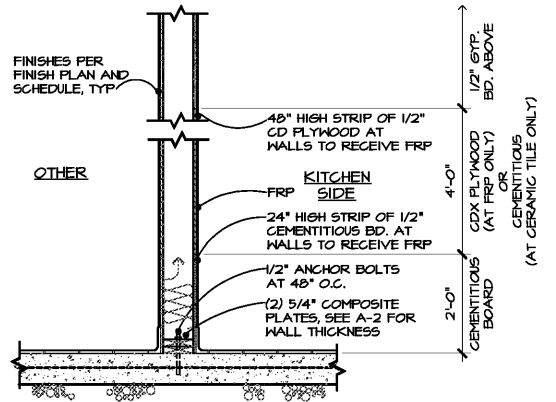
SCALE 3/4" = 1'-0"



2 ARTWORK FRAME DETAIL

2 A-9.1

SCALE 1 1/2" = 1'-0"



3 TYP. INT. PARTITION W/ CERAMIC TILE OR FRP FINISH

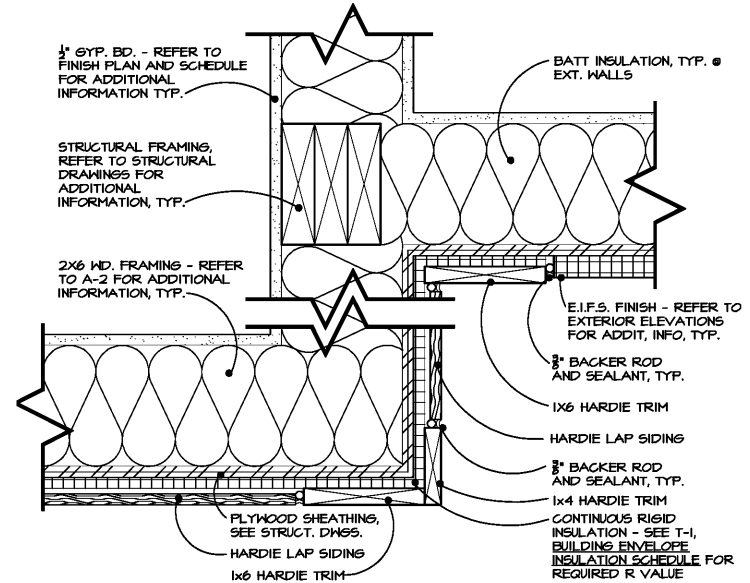
3 A-9.1

SCALE 3/4" = 1'-0"

4 NOT USED

4 A-9.1

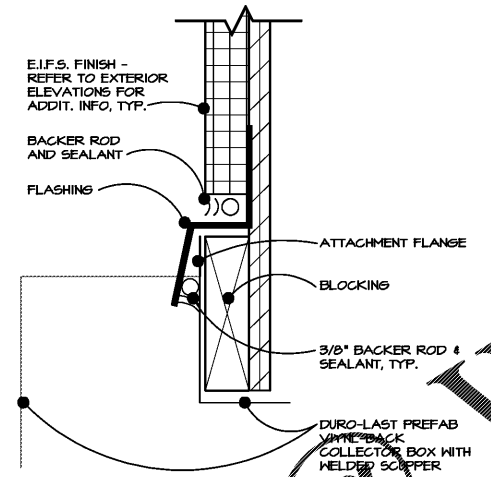
SCALE 3/4" = 1'-0"



5 PLAN DTL. AT HARDIE TRIM

5 A-9.1

SCALE 3" = 1'-0"



6 FLASHING

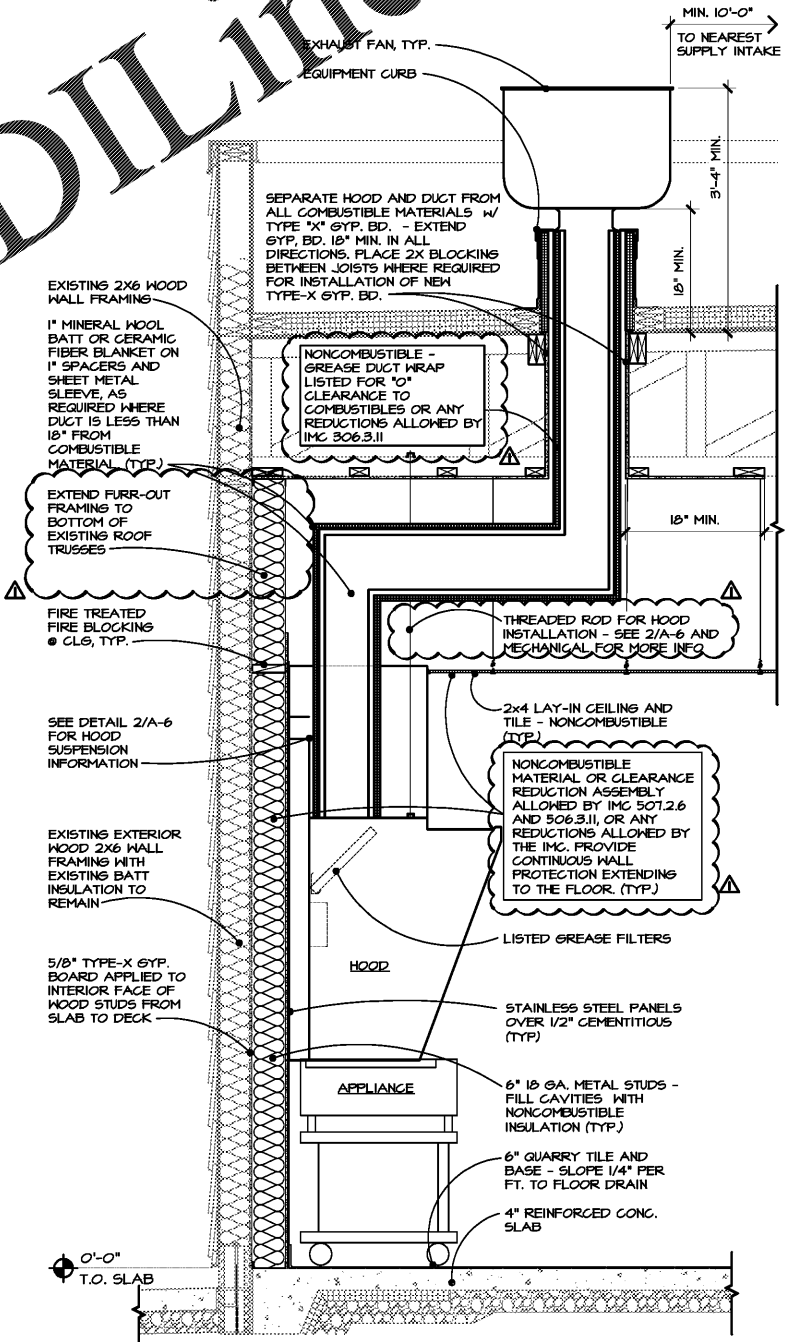
6 A-9.1

SCALE 6" = 1'-0"

7 NOT USED

7 A-9.1

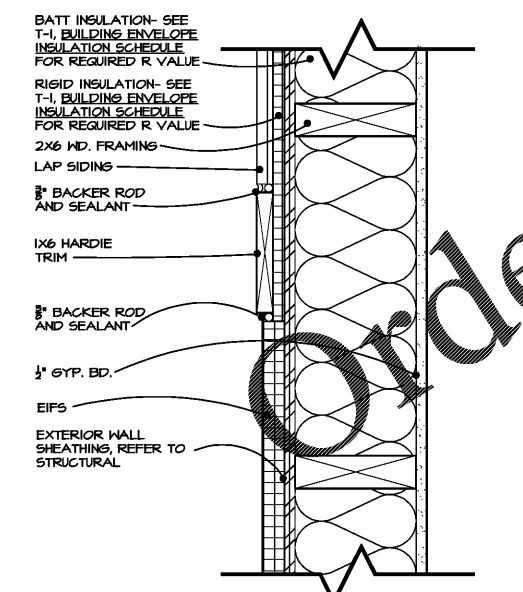
SCALE



8 TYP. HOOD/ DUCT PENETRATION AT ROOF

8 A-9.1

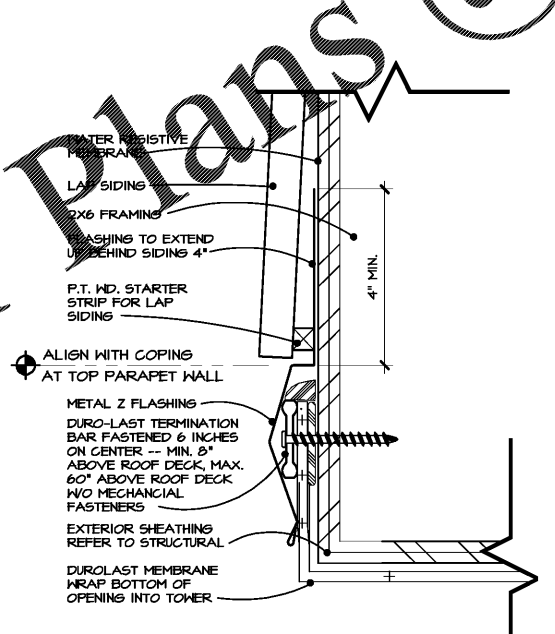
SCALE 1 1/2" = 1'-0"



9 PLAN DETAIL AT HARDIE TRIM AND EIFS

9 A-9.1

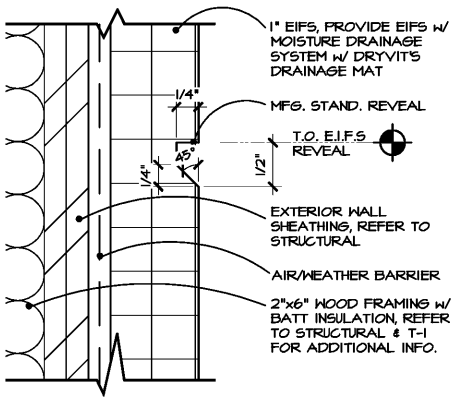
SCALE 3" = 1'-0"



10 SIDING TERMINATION AT BACK TOWER

10 A-9.1

SCALE 6" = 1'-0"



11 EIFS REVEAL

11 A-9.1

SCALE 1" = 1'-0"

Order Plans @ WWW.LDILine.com

**DESIGN and ENGINEERING**  
 INC ARCHITECTS  
 STRUCTURAL AND CIVIL ENGINEERS  
 1645 Westgate Circle  
 Brentwood, Tennessee 37027  
 615-370-1779 fax: 370-9108  
 www.dandoinc.us

Professional Engineer Seal  
 State of Tennessee  
 License No. 1793  
 Registered Professional Engineer  
 State of Tennessee  
 License No. 1793

A NEW LOCATION FOR  
**CAPTAIN D'S**  
 1236 W. FLOYD BAKER BLVD  
 GAFFNEY, SC 29342  
**STAR CHAIN, INC.**  
 11375 POINTE PLACE,  
 ROSWELL, GA 30076

**CAPTAIN D'S**  
 RESTAURANT KITCHENS

Job Number:  
 68F-0071  
 Revisions:  
 5/1/19 - CODE COMMENTS

JANUARY 16, 2019  
**A-9.1**  
 MISCELLANEOUS  
 DETAILS  
 CONVERSION