



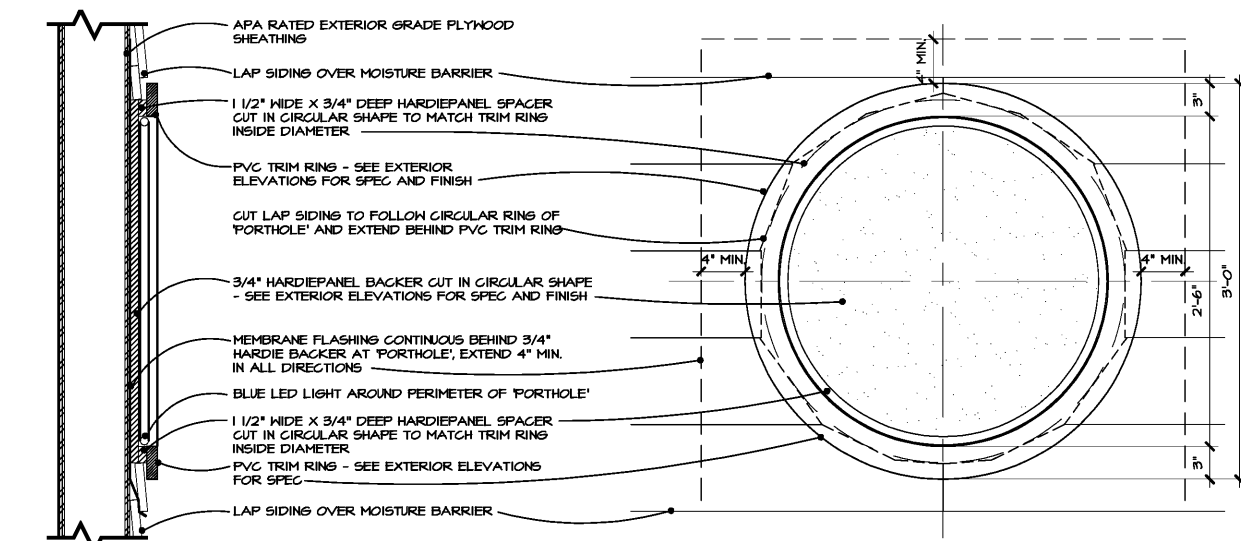
A NEW LOCATION FOR
CAPTAIN D'S
1236 W. FLOYD BAKER BLVD
GAFFNEY, SC 29342
STAR CHAIN, INC.
11375 POINTE PLACE,
ROSWELL, GA 30076



Job Number:
68F-0071
Revisions:

JANUARY 16, 2019

A-9.0
MISCELLANEOUS
DETAILS
CONVERSION

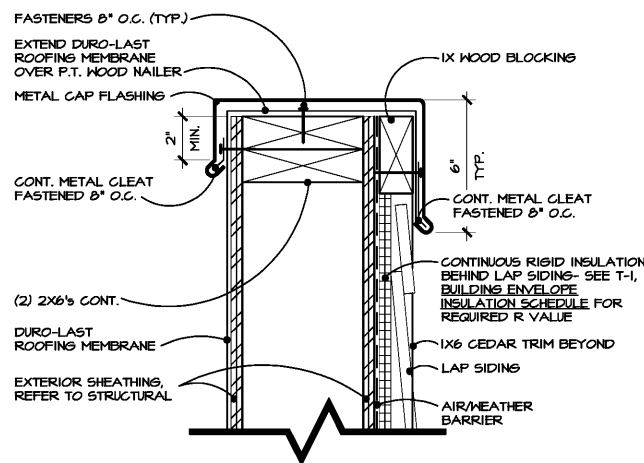


1 TOWER 'PORTHOLE' SECTION
SCALE 1/2" = 1'-0"

2 TOWER 'PORTHOLE' ELEVATION
SCALE 1/2" = 1'-0"

3 NOT USED
N.T.S.

4 NOT USED
SCALE 1/2" = 1'-0"

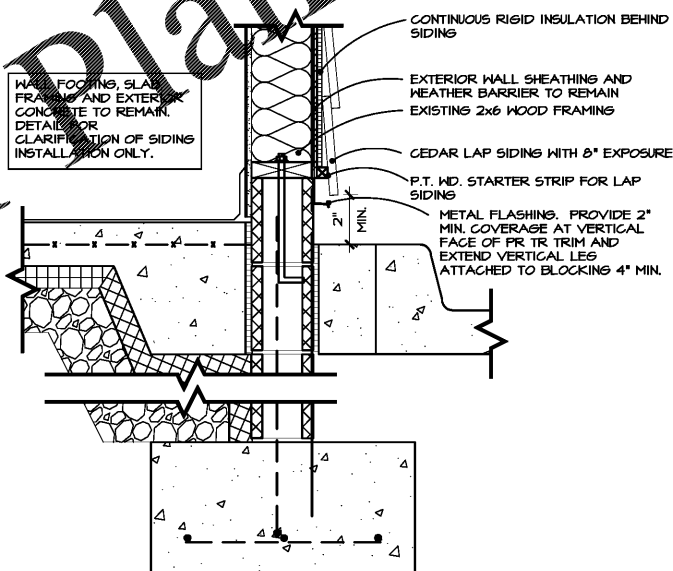


5 PARAPET CAP @ SIDING
SCALE 3" = 1'-0"

6 NOT USED
SCALE 3" = 1'-0"

7 COPING SEAM DETAIL
N.T.S.

8 NOT USED
SCALE 3" = 1'-0"



9 NOT USED
SCALE 1/2" = 1'-0"

10 FOUNDATION AT SIDING
SCALE 1/2" = 1'-0"

11 NOT USED
SCALE 1/2" = 1'-0"

12 NOT USED
SCALE 1/2" = 1'-0"

Order Plans @ www.dandoinc.com