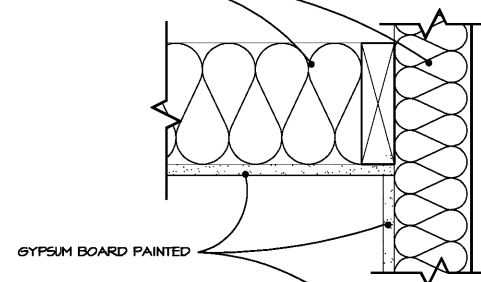


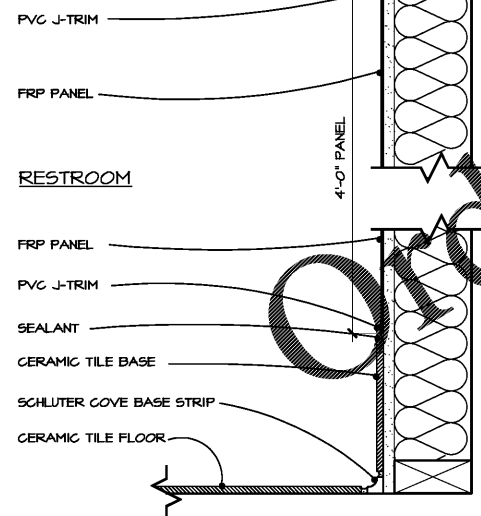
4 BASE DETAIL
A-5.3 SCALE 6" = 1'-0"

3 OPEN
A-5.3 SCALE

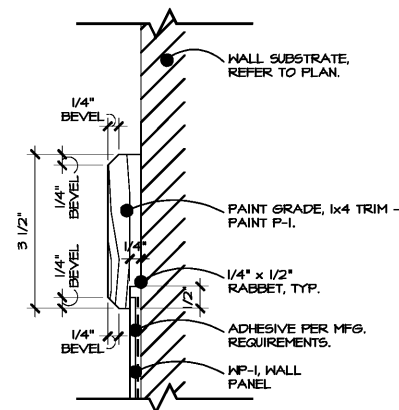
WALL AND CEILING FRAMING AND INSULATION - REFER TO SHEET A-2



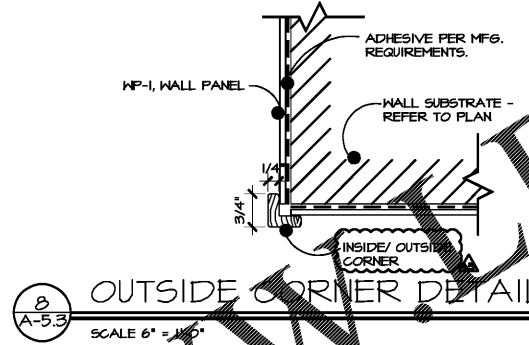
NOTE: REFER TO FINISH FLOOR PLAN, INTERIOR ELEVATIONS, AND FINISH SCHEDULE FOR MORE INFORMATION



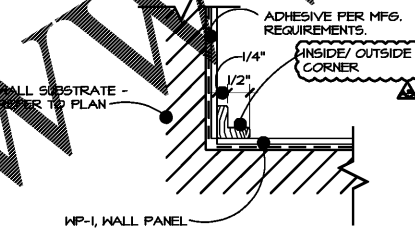
1 RESTROOM FINISH DETAIL
A-5.3 SCALE 3" = 1'-0"



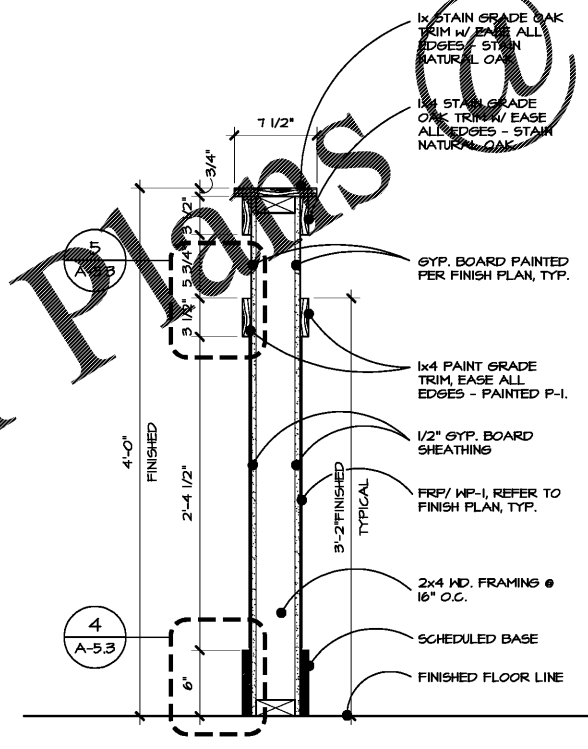
5 CHAIR RAIL DETAIL
A-5.3 SCALE 6" = 1'-0"



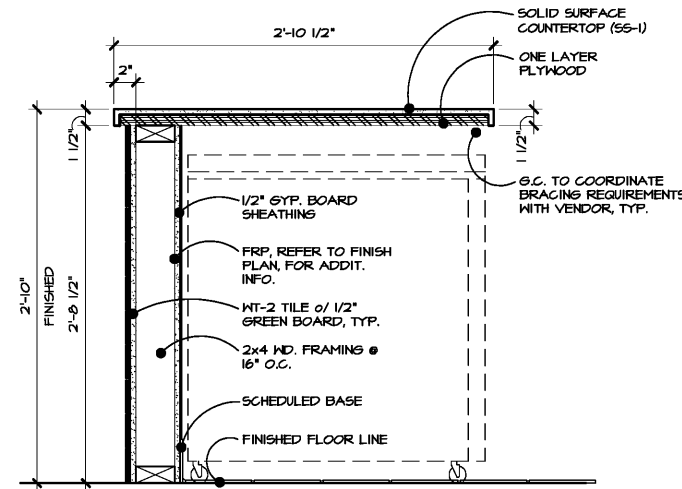
8 OUTSIDE CORNER DETAIL
A-5.3 SCALE 6" = 1'-0"



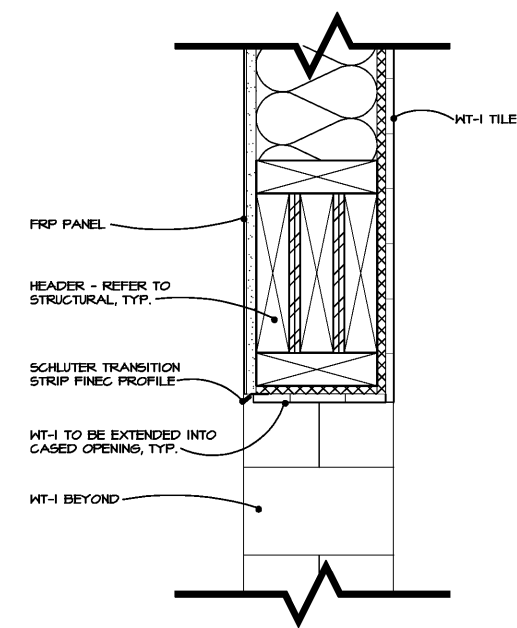
7 INSIDE CORNER DETAIL
A-5.3 SCALE 6" = 1'-0"



2 PARTIAL HT. WALL DETAIL
A-5.3 SCALE 1 1/2" = 1'-0"



6 SERVING COUNTER DETAIL
A-5.3 SCALE 1 1/2" = 1'-0"



9 KITCHEN PASS-THRU CASSED OPENING DTL.
A-5.3 SCALE 3" = 1'-0"



A NEW LOCATION FOR
CAPTAIN D'S
1236 W. FLOYD BAKER BLVD
GAFFNEY, SC 29342
STAR CHAIN, INC.
11375 POINTE PLACE,
ROSOWELL, GA 30076



Job Number:
68F-0071
Revisions:

JANUARY 16, 2019

A-5.3
SECTIONS & DETAILS
CONVERSION