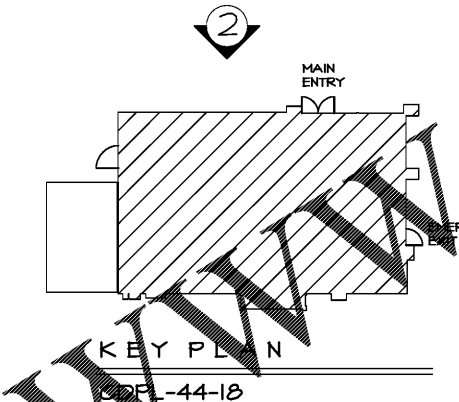
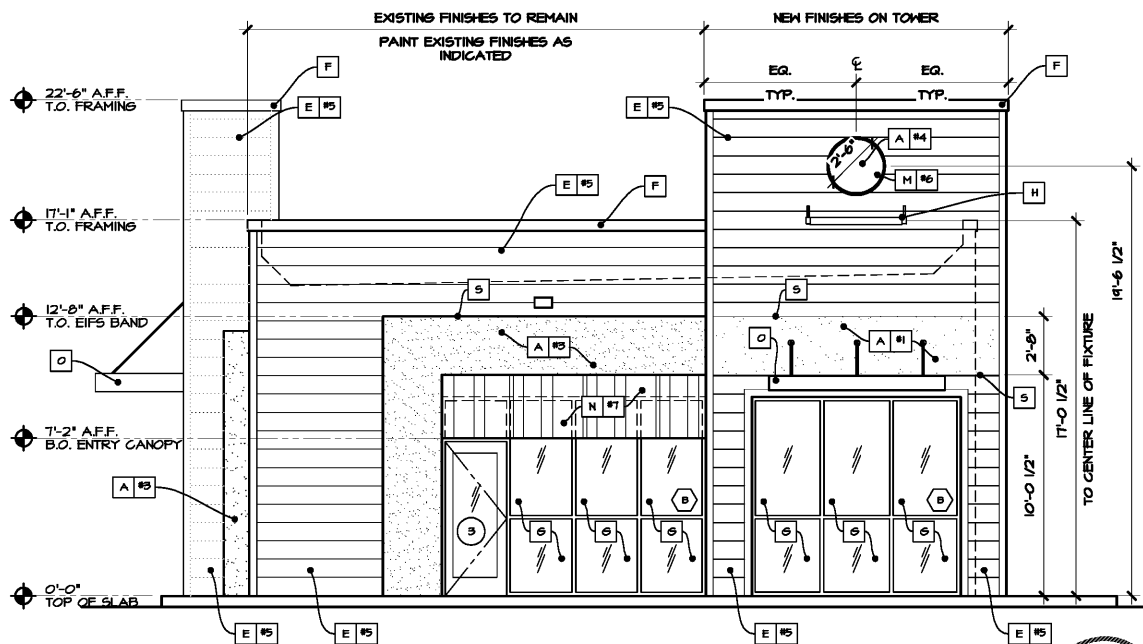


SYMBOL	MATERIAL	DESCRIPTION	REMARKS
A	E.I.F.S.	E.I.F.S. AS MANUFACTURED BY DRYVIT SYSTEMS, INC. PROVIDE "OUTSULATION RMD SYSTEM". THE SYSTEM CONFIGURATION SHALL BE TYPE I WITH BACKSTOP NT AND DRAINAGE MAT. SYSTEM TO BE 1" THICKNESS. PROVIDE WITH DRAINAGE TRACK OPTION. STANDARD FINISH & COLOR AS INDICATED ON DRAWINGS. ACCEPTABLE E.I.F.S. MANUFACTURERS INCLUDE STO, PAREX, & BASF - IF ALTERNATE MANUFACTURER IS PREFERRED, PROVIDE SUBMITTAL & COLOR SELECTION TO CAPTAIN D'S REP. FOR REVIEW & APPROVAL. CONTROL JOINTS PER MANUFACTURER'S SPECIFICATIONS.	INSTALLATION PER MANUFACTURER SPECS.
B	CORONADO STONE VENEER	CHISELED STONE SILL -- LEDGESTONE, CORONADO HONEY LEDGE - GOLDEN HARVEST	INSTALLATION PER MANUFACTURER SPECS.
C	E.I.F.S. REVEAL	USE MANUFACTURER'S STANDARD REVEAL DETAIL SEE DETAIL II/A9.J	INSTALLATION PER MANUFACTURER SPECS.
D	STOREFRONT DOOR	KAWNEER-SYSTEM, 190 SWING DOOR. FINISH, ALUMINUM, GLASS 1 CLEAR ANODIZED, NON-INSULATED AT DOORS, 1/4" GLASS PANE-COLOR, CLEAR, TEMPERED. ACCEPTABLE ALTERNATE MANUFACTURERS INCLUDE YKK AP, TUBELITE OR CORAL.	INSTALLATION PER MANUFACTURER SPECS.

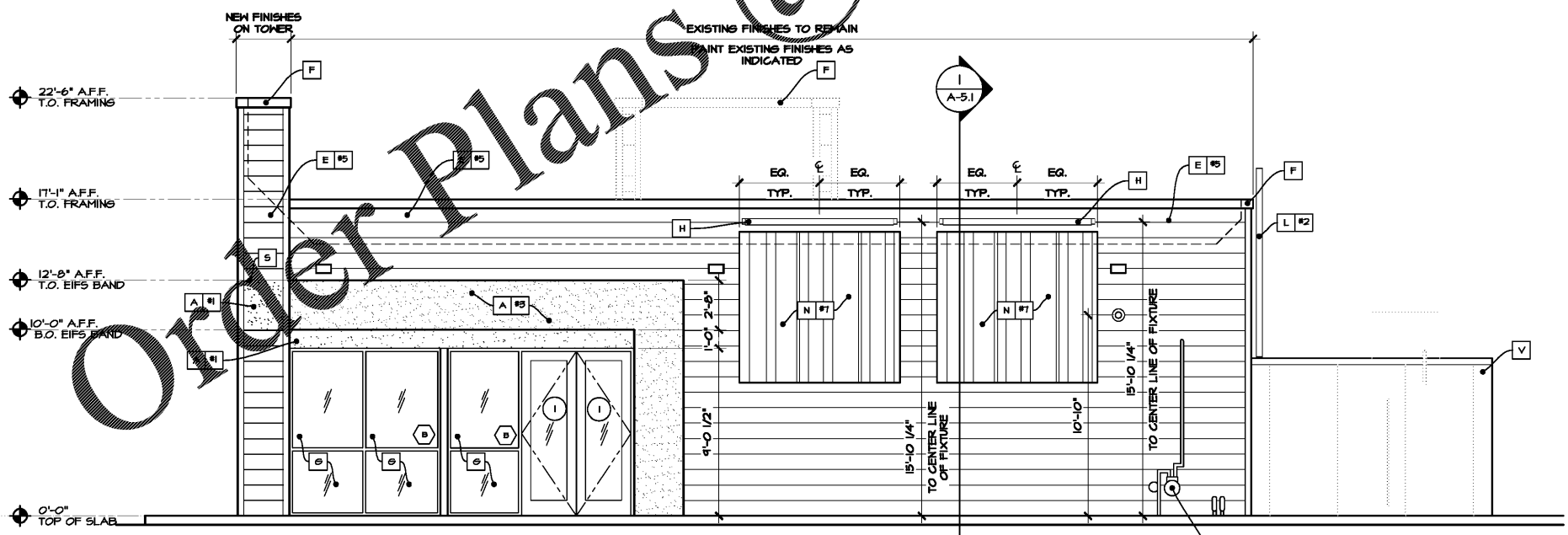
SYMBOL	MATERIAL	DESCRIPTION	REMARKS
E	HARDIPLANK CEMENTITIOUS LAP SIDING	SELECT CEDARMILL -- SIZE: 9 1/4"	
F	PARAPET WALL CAP	SALVANIZED STEEL CAP FLASHING. REFERENCE WALL SECTIONS, SHEETS A5.O. FOR DETAILS AND WALL SECTIONS, PREP AND PAINT - COLOR, ALUMINUM (TO MATCH CLEAR ANODIZED STOREFRONT SYSTEM).	INSTALLATION PER SMACNA
G	STOREFRONT WINDOWS	STOREFRONT SYSTEM TO MATCH EXISTING BUILDING SYSTEM AND MATCH EXISTING STOREFRONT FINISH. NEW PORTIONS OF GLAZING TO BE SOLARBAN 60 OR EQUIVALENT ON #2 SURFACE.	EXISTING TO REMAIN - PORTIONS TO BE MODIFIED. SEE A-II FOR MORE INFORMATION. INSTALLATION PER MANUFACTURER SPECS.
H	EXTERIOR LIGHTING	SEE ELECTRICAL - FOR LINEAR SIGN LIGHTERS, USE TREADED NIPPLE FITTINGS BOTH ENDS - LIGHTS ABOVE AWNINGS TO RECEIVE 9" FITTING, FRONT TOWER LIGHT TO RECEIVE 18" FITTINGS - RUN ELECTRICAL CONNECTION AT ONE END.	TOWER CANOPY HAS PREINSTALLED TOP SURFACE MOUNTED SIGN LIGHTER FIXTURE CONTAINING WHP FOR ELECTRICAL CONNECTION
J	SEAMLESS DOWNSPOUT	PRE-FINISHED ALUMINUM, COLOR TO MATCH SHERWIN WILLIAM-SW 6651 CHERISH CREAM (CREAM/WHITE)	REFER I2/A-9 & A-6 FOR ADDIT. INFO & LOCATION.

SYMBOL	MATERIAL	DESCRIPTION	REMARKS
K	6" CMU	PREP/ PAINT. REFERENCE DRAWINGS, SECTIONS/ DETAILS.	
L	EXISTING METAL ROOF LADDER	PAINT. TO MATCH SHERWIN WILLIAM - SW1076 CYBER SPACE (GRAY)	
M	CUSTOM PERIPHERY RING & BLUE LED LIGHT	2'-6" DIA. PORTHOLE W/ MOLDED PVC TRIM RING BY FYPON. TRIM RING MODEL NO. RLV28X4F, ROUND 35 3/16" X 35 3/16" X 1" SMOOTH. SEE T-11 FOR VENDOR CONTACT INFO.	CENTERED IN TOWER
N	AWNING	ALUMINUM AWNINGS	CONTACT AWNING VENDOR FOR SHOP DRAWINGS
O	ENTRY/DRIVE THRU CANOPY	ALUMINUM CANOPY THRU CANOPY COLOR: DARK BRONZE METAL	CONTACT AWNING VENDOR FOR SHOP DRAWINGS
P	H.M. DOOR & FRAME	EXTERIOR HOLLOW METAL DOOR - SEE A-II FOR MORE INFORMATION	
Q	TANKLESS WATER HEATER DUAL INTAKE & EXHAUST	DUAL INTAKE & EXHAUST HORIZONTAL TERMINATION KIT FOR THE RANNAI TANKLESS WATER HEATER SYSTEM	
R	HARDIEPANEL	SIGN BACKER, (1) LAYER @ COLOR 3 AND (1) LAYER @ COLOR 4 OF TOWER	
S	Z-FLASHING	TO BE INSTALLED AT ALL TRANSITIONS BETWEEN FINISHES "E" & "R"	
T	NICHIA BRICK PANEL	CANYONBRICK - SHALE, BROWN, EF241	INSTALLATION PER MANUFACTURER SPECS.
U	HOSE BIB	S.C. TO PROVIDE MFG. RECOMMENDED ESCUTCHEONS PLATE.	REFER TO PLUMB. SHEETS FOR ADDIT. INFO.
V	EXTERIOR FREEZER COOLER	PRE-FINISHED STEEL TO MATCH #1	
W	ALUMINUM FLASHING	COLOR TO CLEAR ANODIZED TO MATCH STOREFRONT SYSTEM	
X	PAINT	SHERWIN WILLIAM-SW 6651 CHERISH CREAM (CREAM/WHITE)	PREP, PRIME, AND PAINT PER MANUFACTURER SPEC. FOR SURFACES/ MATERIAL INDICATED
Y	PAINT	SHERWIN WILLIAM-SW 1076 CYBER SPACE (GRAY)	
Z	PAINT	SHERWIN WILLIAM-SW 6711 PARAKEET (GREEN)	
AA	PAINT	SHERWIN WILLIAM-SW 6419 DRIZZLE (BLUE)	
AB	PAINT	SHERWIN WILLIAMS-SW 3034 CEDAR (LIGHT BROWN)	
AC	PAINT	SHERWIN WILLIAMS-SW 1005 PURE WHITE (WHITE)	
AD	FILM GRAPHIC	3M - CUSTOM STRIPE APPLIQUE PATTERN	GRAPHIC APPLIED TO ALUMINUM AWNING, TYP.

- GENERAL NOTES**
- COORDINATE WITH MECHANICAL, PLUMBING, AND ELECTRICAL DRAWINGS FOR ALL PENETRATIONS IN THE EXTERIOR FACADES.
  - SEE SHEET A-II & A-III FOR WINDOW/ DOOR TYPES AND DETAILS.
  - NOT ALL SYMBOLS/ MATERIALS MAY BE USED OR REFERENCED ON DRAWINGS, TYP.
  - PAINT ALL BOLLARDS #2



**1 FRONT ELEVATION**  
SCALE: 1/4" = 1'-0"



**2 RIGHT SIDE ELEVATION**  
SCALE: 1/4" = 1'-0"

**GENERAL FASTENING REQUIREMENTS**

- ALL FASTENERS MUST BE HOT-DIPPED OR STAINLESS STEEL.
- DRIVE FASTENERS PERPENDICULAR TO SIDING AND FRAMING.
- FASTENER HEADS SHOULD FIT SNUG AGAINST SIDING (NO AIR SPACE).
- DO NOT OVER-DRIVE HEADS OR DIVE NAILS AT ANGLE.
- IF NAIL IS COUNTERSUNK, CAULK NAIL HOLE WITH PAINT/STAINABLE FILLER APPROVED BY FINISH MATERIAL MANUFACTURE.
- UNDER DRIVEN NAILS SHOULD BE HIT FLUSH TO THE FACE WITH A SMOOTH FACE HAMMER.
- PNEUMATIC FASTENING - SET AIR PRESSURE SO THAT THE FASTENER IS DRIVEN SNUG WITH THE FINISH SURFACE. A FLUSH MOUNT ATTACHMENT ON THE PNEUMATIC TOOL IS RECOMMENDED. IF SETTING THE NAIL DEPTH PROVES DIFFICULT, CHOOSE A SETTING THAT UNDER DRIVES THE NAIL. (DRIVE UNDER DRIVEN NAILS SNUG WITH A SMOOTH FACE HAMMER)
- DO NOT USE ALUMINUM FASTENERS, STAPLES, OR CLIPPED HEAD NAILS.

**ACCEPTABLE FASTENING**

SNUG

FLUSH

**UNACCEPTABLE FASTENING & SOLUTIONS**

COUNTERSUNK

SOLUTION: FILL HOLE WITH PAINT/STAINABLE FILLER APPROVED BY FINISH MATERIAL MANUFACTURE

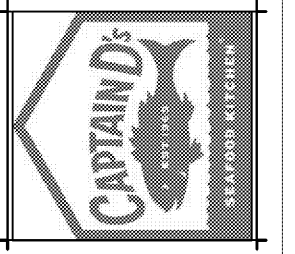
UNDER DRIVEN

SOLUTION: DRIVE SNUG WITH WITH A SMOOTH FACE HAMMER

**D E S I G N**  
and  
**E N G I N E E R I N G**  
I N C ARCHITECTS  
STRUCTURAL AND CIVIL ENGINEERS  
1645 Westgate Circle  
Brentwood, Tennessee 37027  
615-370-1779 fax: 370-9108  
www.dandinc.us

A NEW LOCATION FOR  
**CAPTAIN D'S**  
1236 W. FLOYD BAKER BLVD  
GATFNEY, SC 29342

**STAR CHAIN, INC.**  
11375 POINTE PLACE,  
ROSWELL, GA 30076



Job Number:  
68F-0071  
Revisions:

JANUARY 16, 2019  
**A-4.0**  
EXTERIOR ELEVATIONS  
CONVERSION