

EXISTING PARKING COUNTS

	REQUIREMENT	REQUIRED NUMBER	EXISTING TOTAL	NEW TOTAL
PARKING SPACES	1 PER 350sqft	6 SPACES	20 TOTAL	14 TOTAL
ACCESSIBLE SPACES	1 UP TO 25 TOT. (REC TABLE 1106)	1 VAN SPACE MIN.	1 SPACE	1 VAN SPACE

SEE SHEET C-1 FOR ACCESSIBLE VAN PARKING SPACE LOCATION AND ACCESSIBLE PATH TO ENTRY

- ### GENERAL NOTES
- SEE ELECTRICAL SHEETS FOR EXACT LIGHT TYPE/MODEL.
 - S.C. TO VERIFY QUANTITY & LOCATIONS OF FIRE EXTINGUISHERS WITH LOCAL AUTHORITIES. S.C. TO SUPPLY ANY ADDITIONAL FIRE EXTINGUISHERS IF REQUIRED.
 - SEE DIMENSION PLAN FOR WALL TYPES AND LOCATIONS.
 - A SIGN STATING THE OCCUPANT LOAD OF THE BUILDING SHALL BE POSTED IN A CONSPICUOUS PLACE NEAR THE MAIN ENTRY. S.C. TO PROVIDE AND INSTALL OCCUPANT LOAD SIGN. S.C. TO VERIFY WITH LOCAL AUTHORITIES FOR LOCATION OF SIGN.
 - IF REQUIRED, S.C. TO PROVIDE FIRE DEPARTMENT REQUIRED KEY BOX. COORDINATE LOCATION AND TYPE WITH LOCAL AUTHORITIES.
 - IF REQUIRED, S.C. TO VERIFY LOCATION, SIZE, AND TYPE OF ADDRESS NUMBERS FOR BUILDING WITH LOCAL AUTHORITIES. LETTERS TO BE SUPPLIED BY S.C.
 - IF REQUIRED, S.C. TO PROVIDE AND COORDINATE PLACEMENT OF "THIS DOOR TO REMAIN UNLOCKED WHEN BUILDING IS OCCUPIED" OVER MAIN ENTRY DOORS WITH LOCAL AUTHORITIES.
 - S.C. TO CONFIRM PROPOSED LOCATION OF FIRE PULL STATION FOR HOOD FIRE SUPPRESSION SYSTEM WITH LOCAL AUTHORITIES, OR FIRE INSPECTOR PRIOR TO INSTALLATION.

ACCESSIBLE SEATING REQUIREMENTS

TOTAL NUMBER OF INTERIOR SEATS	PER IBC 2015 TABLE 1109.2.2.1	ACCESSIBLE SEATS PROVIDED
32	26-30 SEATS REQUIRES 2 ACCESSIBLE SEATS	2 SEATS

MEANS OF EGRESS

INTERIOR SEAT COUNT IS: 32
 INTERIOR OCCUPANT LOAD IS: 60
 EXIT UNITS:
 - (2) EXITS PROVIDED (2) REQUIRED
 - EXIT AISLES ARE 44" MIN. WIDTH
 - EXIT ACCESSWAYS ARE 36" MIN. WIDTH
 - ALL EXIT DOORS SHALL MEET OR EXCEED 32" CLEAR WIDTH WHEN IN THE OPEN POSITION AND SWING IN THE DIRECTION OF TRAVEL.
 - EXIT LOCATIONS MEET OR EXCEED THE REQUIRED NUMBER AND SEPARATION REQUIREMENTS.

EGRESS WIDTH:
 OCCUPANT LOAD = 60
 20 x 60 = 12' REQUIRED

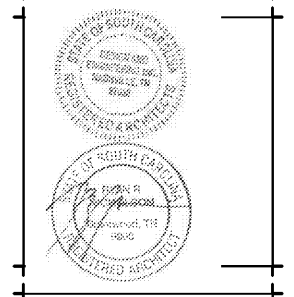
TOTAL EGRESS WIDTH =
 (1) DOOR @ 34" CLEAR
 (1) SET OF DOORS @ 70" CLEAR
 104" > 12'

-50% OF EGRESS MUST EXIT THROUGH MAIN ENTRY.
 (1) DOOR @ 72" = 70" CLEAR
 50% OF 60 OCCUPANTS = 30 OCCUPANTS
 2 x 30 = 6" REQUIRED
 6" < 10"

LEGEND

⊕	REMOTELY MOUNTED EXTERIOR EMERGENCY LIGHT
● FE	WALL MOUNTED FIRE EXTINGUISHER
⊖ NL	RECESSED LED CAN LIGHT FIXTURE ON NIGHT LIGHT CIRCUIT
⊗	CEILING MOUNTED EXIT SIGN - SHADED QUADRANT INDICATES SIGN FACE
⊕	WALL MOUNTED EMERGENCY LIGHT
⊗	WALL MOUNTED EXIT SIGN - SHADED QUADRANT INDICATES SIGN FACE
H	MANUAL FIRE STATION FOR HOOD FIRE SUPPRESSION
⊗	FIRE LARM STRIKE
⊗	FIRE ALARM STROBE/HORN COMBO
⊕	CEILING MOUNTED SMOKE DETECTOR
⊗	2'x4' RECESSED TROFFER FIXTURE W/ ACRYLIC LENS, NIGHTLIGHT.
---	REQUIRED 36" CLEAR EXIT AISLE ACCESSWAYS
---	REQUIRED 44" CLEAR EXIT AISLE
///	NON-PUBLIC AREAS

D ESIGN
and
ENGINEERING
INC ARCHITECTS
STRUCTURAL AND CIVIL ENGINEERS
1645 Westgate Circle
Brentwood, Tennessee 37027
615-370-1779 fax: 370-9108
www.dandoinc.us

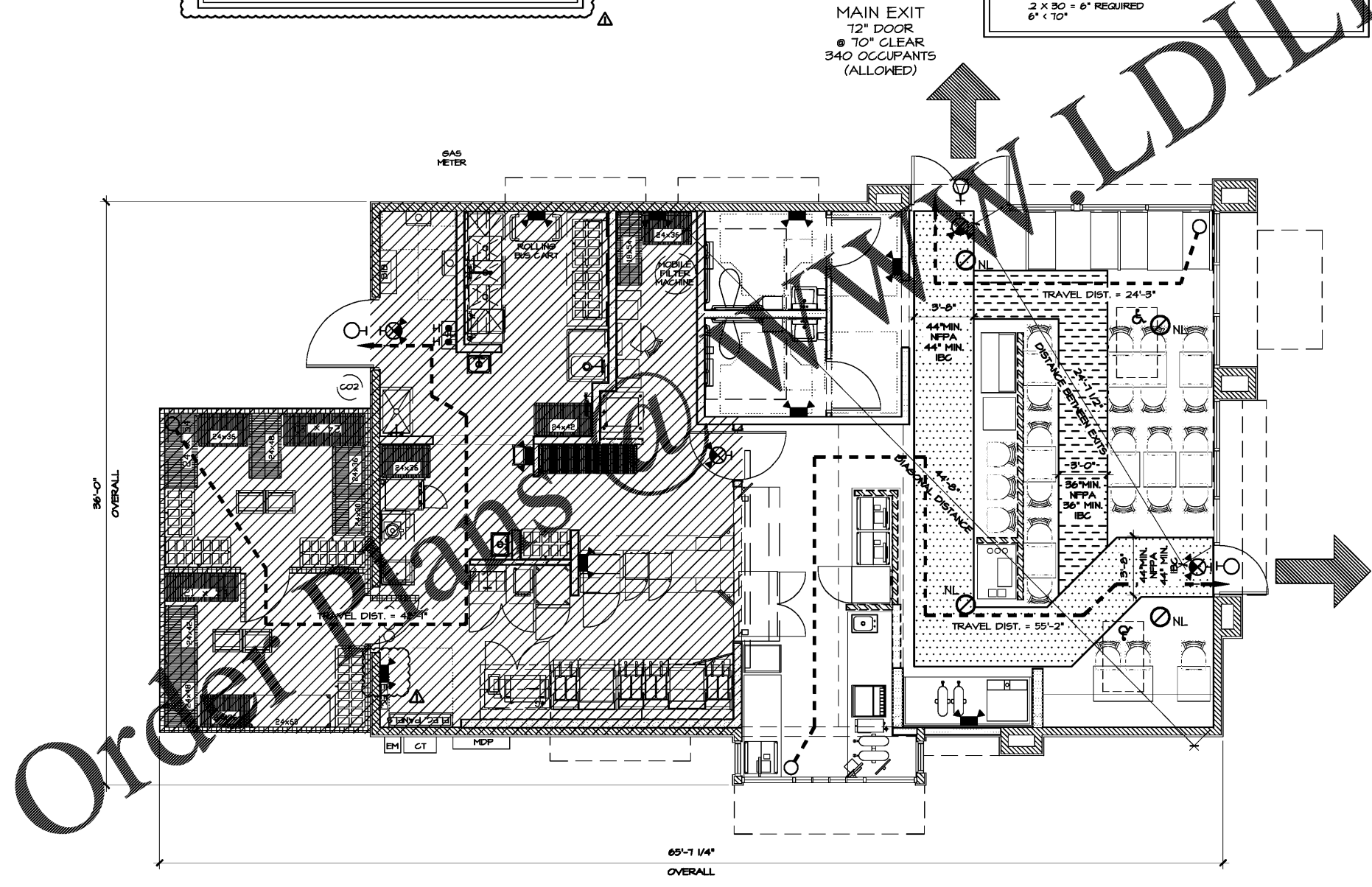


A NEW LOCATION FOR
CAPTAIN D'S
 1236 W. FLOYD BAKER BLVD
 GAFFNEY, SC 29342
STAR CHAIN, INC.
 11375 POINTE PLACE,
 ROSWELL, GA 30076



Job Number:
68F-0071
 Revisions:
 5/1/19 - CODE COMMENTS

JANUARY 16, 2019
LS-1
 LIFE SAFETY PLAN &
 CONVERSION



SECONDARY EXIT
 36" DOOR @ 34" CLEAR
 170 OCCUPANTS (ALLOWED)