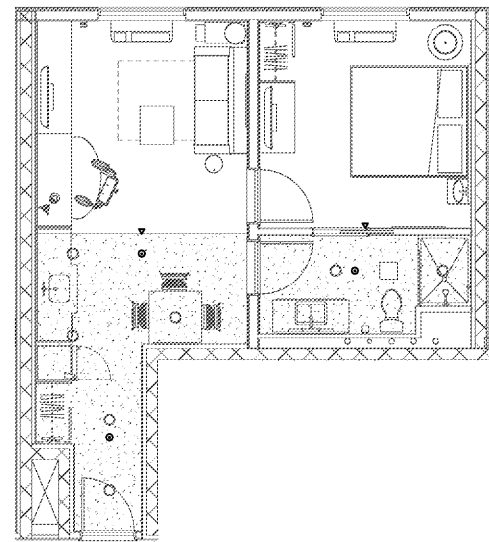
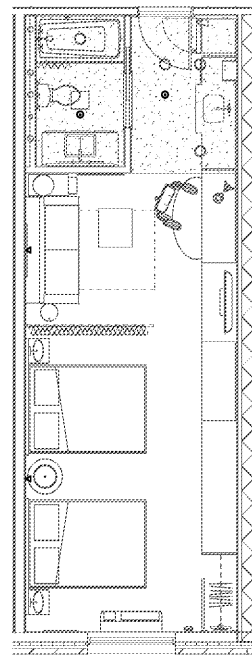


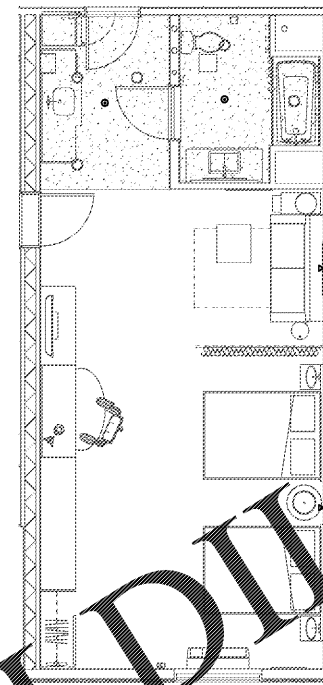
1 KING SUITE
FP.201 SCALE: 1/4" = 1'-0"



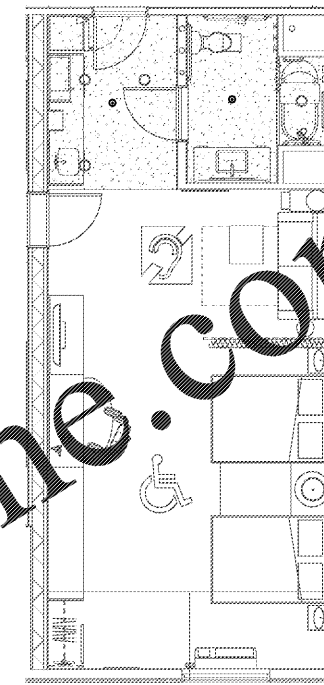
4 KING SUITE END
FP.201 SCALE: 1/4" = 1'-0"



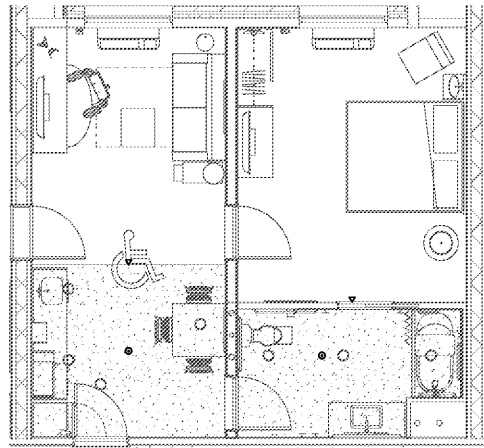
5 DBL QUEEN STUDIO
FP.201 SCALE: 1/4" = 1'-0"
TYPICAL FOR DBL QUEEN STUDIO CORN.
AND FOR DBL QUEEN STUDIO LG.



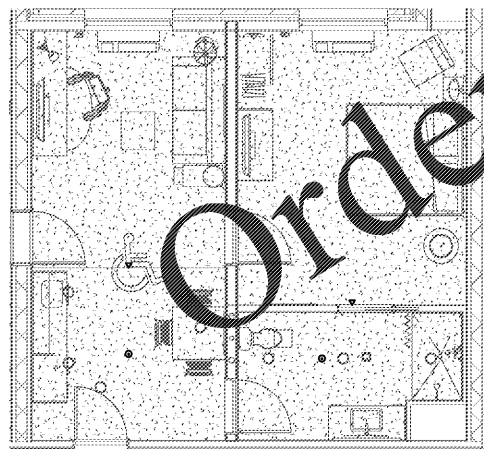
6 DBL QUEEN STUDIO LG CONN.
FP.201 SCALE: 1/4" = 1'-0"



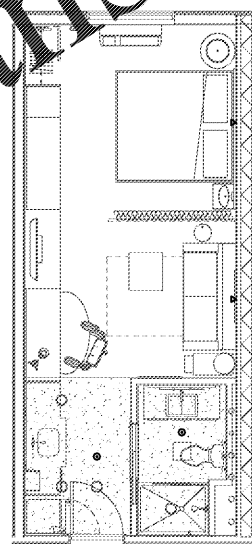
7 DBL QUEEN STUDIO ADA (TUB)
FP.201 SCALE: 1/4" = 1'-0"



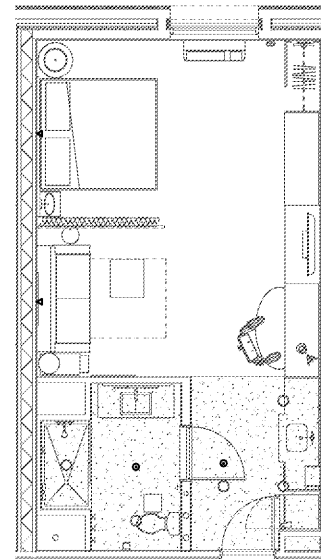
2 KING SUITE ADA (TUB)
FP.201 SCALE: 1/4" = 1'-0"



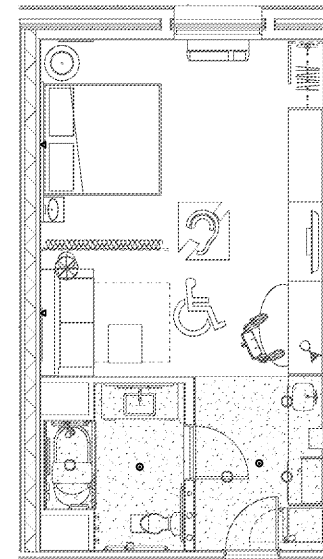
3 KING SUITE ADA (RIS)
FP.201 SCALE: 1/4" = 1'-0"



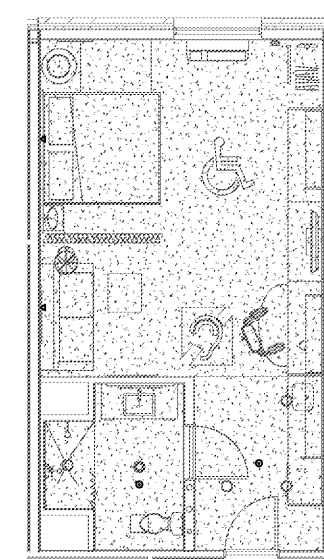
8 KING STUDIO
FP.201 SCALE: 1/4" = 1'-0"
TYPICAL FOR KING STUDIO CORN.



9 KING STUDIO WIDE
FP.201 SCALE: 1/4" = 1'-0"



10 KING STUDIO ADA (TUB)
FP.201 SCALE: 1/4" = 1'-0"



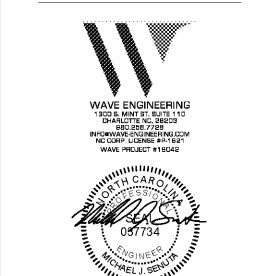
11 KING STUDIO ADA (RIS)
FP.201 SCALE: 1/4" = 1'-0"

GENERAL NOTES THIS SHEET

- GUEST ROOM SPRINKLER LAYOUTS ARE TYPICAL FOR EACH TYPE OF GUEST ROOM INDICATED. SEE FLOOR PLANS FOR ROOM LOCATIONS AND ADDITIONAL INFORMATION.
- WHERE PERMITTED BY LOCAL CODES, SPRINKLERS MAY BE OMITTED FROM GUEST BATHROOMS LESS THAN 55 SQ. FT. IN AREA.
- PIPING FOR SIDEWALL SPRINKLER HEADS IN SLEEPING AREAS OF STUDIO GUEST ROOMS SHALL BE ROUTED WITHIN DEMISING WALLS.



Ragona Architecture & Design, PLLC
145A S. Stryker Road, Charlotte, NC 28209
T. 704.372.5110 www.rad-arch.com



WAVE ENGINEERING
1302 S. MINT ST., SUITE 110
CHARLOTTE, NC 28205
REGISTERED PROFESSIONAL ENGINEER
IN MECHANICAL ENGINEERING
LICENSE # 057734
WAVE PROJECT #18042



HOME 2 SUITES BELMONT
HAWLEY AVE
BELMONT, NC 28012

KEY PLAN

Revisions		
#	Date	Description

Project Number: 18021
Issued for: CONSTRUCTION
Issue Date: 2019.06.07

DRAWING TITLE
FIRE PROTECTION GUEST ROOM PLANS

SHEET NUMBER
FP.201