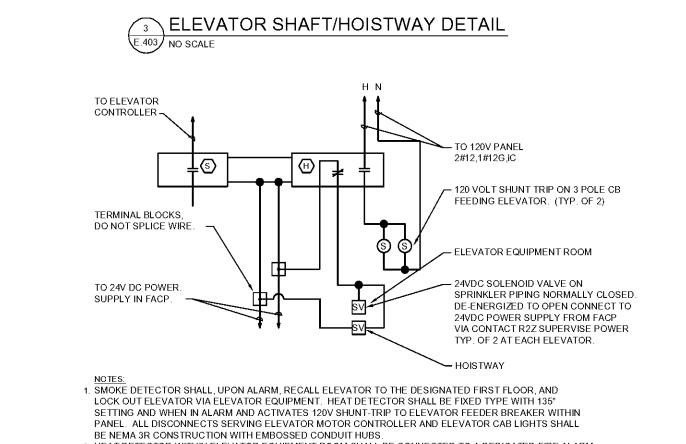


FIRE ALARM SEQUENCE

SEQUENCE OF OPERATIONS	BUILDING SYSTEM OUTPUTS	CENTRAL COMM
ALARM SOURCE AND TYPE		
1. MANUAL PULL STATION ALARM	ACTIVATE COMMON ALARM SIGNAL INDICATOR	
2. BUILDING SMOKE DETECTOR	ACTIVATE ADDRESS ALARM SIGNAL, SIGNAL INDICATOR	
3. SMOKE DETECTOR DIRTY/FUNCTION - ALL	ACTIVATE ADDRESS (UNRECOGNIZED) SIGNAL, SIGNAL INDICATOR	
4. SPRINKLER WATER FLOW	ACTIVATE COMMON TROUBLE SIGNAL INDICATOR	
5. SPRINKLER TAMPER	ACTIVATE ADDRESS TROUBLE SIGNAL, DISPLAY CHANGE OF STATUS	
6. FIRE ALARM AC POWER FAILURE	TRANSMIT 'A' SIGNAL TO CENTRAL COMMUNICATIONS, TRANSMIT TROUBLE SIGNAL TO CENTRAL COMM	
7. FIRE ALARM SYSTEM LOW BATTERY	TRANSMIT 'B' SIGNAL TO CENTRAL COMMUNICATIONS, TRANSMIT TROUBLE SIGNAL TO CENTRAL COMM	
8. OPEN CIRCUIT	SHOW CHANGE OF STATUS ON CENTRAL PANEL	
9. GROUND FAULT	TRANSMIT FIRE ALARM SIGNAL TO CENTRAL STATION, TRANSMIT EQUIPMENT SIGNAL TO CENTRAL STATION	
10. NOTIFICATION APPLIANCE CIRCUIT SHORT	TRANSMIT TROUBLE SIGNAL TO CENTRAL STATION	
11. SYSTEM RESET	(SEE NOTES 1 AND 2 BELOW FOR ACTIONS)	



5 TWO WAY COMMUNICATION RISER
E.403 NO SCALE

RADIO SYSTEMS NOTES:

- RADIO SYSTEM DEVICES SHALL BE INSTALLED IN ACCORDANCE WITH THE SECTION 27.0000 REQUIREMENTS.
- SYSTEM SHALL BE SUBMITTED TO MEET PERFORMANCE CRITERIA OF SECTION 27.0100.
- 95% OF ALL AREAS ON EACH FLOOR SHALL BE COVERED WITH THE FOLLOWING:
 - 1.21 - 95 dBM MINIMUM SIGNAL STRENGTH IN ALL AREAS ON EACH FLOOR.
 - 1.22 - 95 dBM MINIMUM SIGNAL STRENGTH IN ALL AREAS ON EACH FLOOR.
- SYSTEM SHALL BE A RADIO SYSTEM WITH A DISTRIBUTED ANTENNA SYSTEM (DAS) WITH FCC-CERTIFIED SIGNAL BOOSTERS, OR ANOTHER SYSTEM APPROVED BY THE FIRE CODE OFFICIAL.
- SIGNAL BOOSTERS AND DISTRIBUTION SYSTEMS SHALL BE IN A TYPE 4-TYPE WATERPROOF CABINET.
- FCC CERTIFICATION PRIOR TO INSTALL.
- ANY OTHER AMPLIFICATION SYSTEMS CAPABLE OF OPERATING ON THE PUBLIC SAFETY AGENCY FREQUENCIES (CELLULAR DISTRIBUTED ANTENNA SYSTEM) SHALL ONLY BE ALLOWED TO BE INSTALLED IF APPROVED BY THE FIRE CODE OFFICIAL.
- ALL RADIO SYSTEM EQUIPMENT AND CABLE SHALL BE PROVIDED BY THE RADIO SYSTEMS SUB CONTRACTOR. THE RADIO SYSTEMS SUB CONTRACTOR SHALL BE RESPONSIBLE FOR SUBMITTING SITE SPECIFIC SYSTEMS DRAWINGS, CUT SHEETS, WIRING DIAGRAMS & PERMIT READY SHOP DRAWINGS TO THE AHJ.
- FURNISH AND INSTALL ALL CONDUIT, CABLE AND HARDWARE AS REQUIRED FOR THE COMPLETE OPERATION OF THE RADIO SYSTEM.
- PROVIDE ALL INSTALLATION & TESTING REQUIREMENTS PER IFC 510 AND THE LOCAL AHJ & FIRE CODES.
- INSTALL ALL CABLE IN EMT CONDUIT SIZE FOR A MAXIMUM OF 40% FILL PER THE NEC. INDICATE ALL MINIMUM CONDUIT SIZES IN SHOP DRAWINGS.
- EXACT QUANTITY AND LOCATION OF CEILING MOUNTED ANTENNA TO BE SPECIFIED IN RADIO SYSTEM SUBMITTAL DRAWINGS BASED ON ANTENNA COVERAGE REQUIREMENTS. REFER TO ANTENNA MANUFACTURER REQUIREMENTS.
- 24 HOUR GENERATOR BACK UP IS PROVIDED. BATTERY BACK UP SHALL BE PROVIDED TO CONTINUE RADIO SERVICE DURING TRANSITION FROM NORMAL POWER TO GENERATOR.
- SINGLE MODE FIBER RISER CABLE.
- SINGLE MODE FIBER CABLE. EACH ANTENNA SHALL BE PROVIDED WITH 120V POWER FROM 24 HOUR BACK UP SOURCE.
- FIBER DISTRIBUTION PORTS FOR CABLING OUT TO ANTENNAS (AS REQUIRED) LOCATION IN FLOOR'S ELECTRICAL ROOM.

NOTES:

- ALL EQUIPMENT SHALL BE OF THE SAME MANUFACTURER AND MEET THE REQUIREMENTS OF ADA AND ALL OTHER CODES AND REQUIREMENTS.
- SYSTEM SHALL BE WIRED IN ACCORDANCE WITH THE MANUFACTURER'S PUBLISHED RECOMMENDATIONS IN MINIMUM OF 1/2" CONDUIT.
- OPERATION OF SYSTEM SHALL BE HANGS FREE.
- TWO WAY CALL STATIONS TO HAVE PANEK BUTTONS LABELED "PUSH FOR HELP" MOUNTED AT 48" FT TO CENTER.
- FIELD COORDINATE ALL LOCATIONS OF DEVICES WITH FIRE MARSHAL PRIOR TO ROUGH-IN.