

**GUESTROOM GENERAL NOTES**

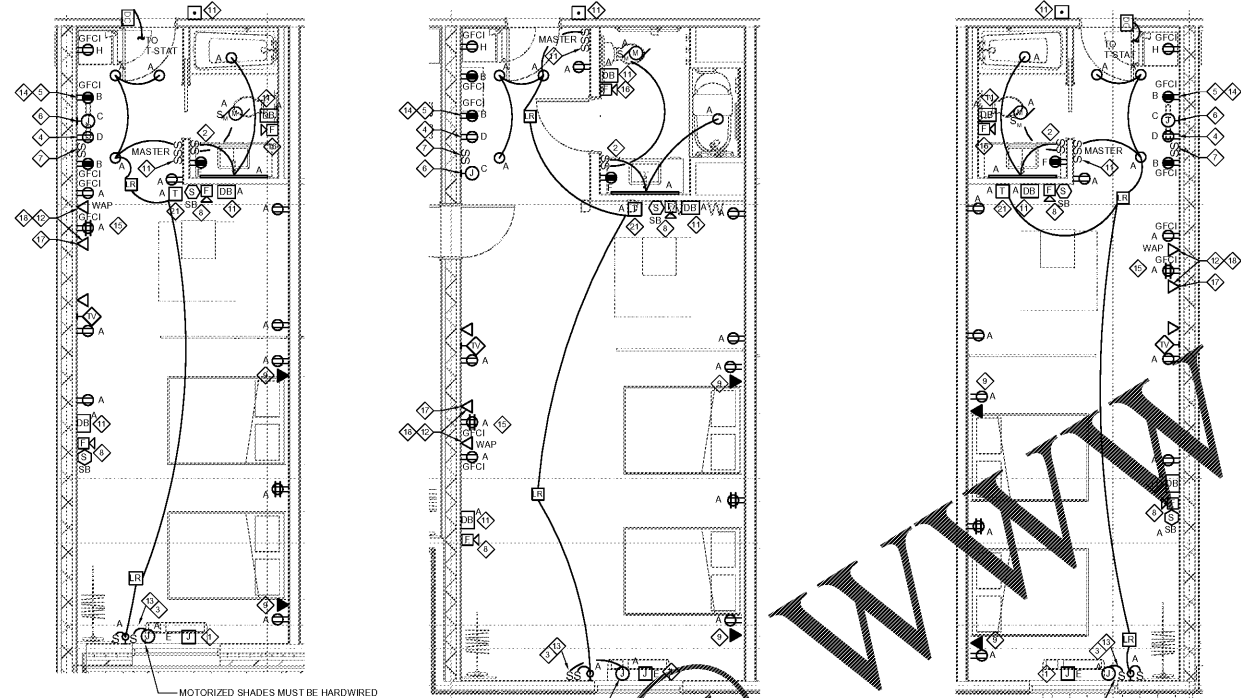
- CONTRACTOR SHALL COORDINATE WITH ARCHITECTURAL ELEVATION DETAILS. PROTOTYPICAL DRAWINGS, FIELD CONDITIONS & OWNER FOR EXACT LOCATIONS AND MOUNTING HEIGHTS PRIOR TO ANY ELECTRICAL ROUGH-IN WORK.
- REFER TO OVERALL ELECTRICAL PLANS FOR CIRCUIT NUMBERS. THE ELECTRICAL CONTRACTOR SHALL ALSO REFER TO PANEL SCHEDULES AND RISER DIAGRAMS FOR ADDITIONAL INFORMATION.
- AT WALLS BETWEEN ADJACENT ROOMS, ELECTRICAL OUTLET LOCATIONS, INCLUDING VOLTAGE BOXES, SHALL BE OFFSET A MINIMUM OF SIX INCHES HORIZONTALLY. WIRE ROUGHING IN ELECTRICAL CORDS SHALL BE HIDDEN FROM VIEW AND MILLWORK BACK LOCATIONS ARE STRICTLY PROHIBITED.
- LIGHT SWITCH AND GFCI OUTLETS SHALL BE MOUNTED IN A COMMON BOX WITH COVER PLATE. COORDINATE ALL CLEARANCES WITH FF&E EQUIPMENT DRUMS/TRAYS PRIOR TO ROUGH IN.
- HEIGHT OF ALL SWITCHES, OUTLETS, ETC., TO MEET ACCESSIBILITY STANDARDS PER MAXIMUM AND MINIMUM REACH RANGE. FEDERAL AND LOCAL CODES SHALL BE THE MOST STRINGENT STANDARD PREVAILS. VERIFY WITH BRAND STANDARD TABLE OR DECORA TYPE SWITCHES.
- ELECTRICAL OUTLETS AT DESKS ARE TO BE COORDINATED WITH LATEST BRAND STANDARDS.
- MAIN GUEST BATH LIGHT FIXTURE AND EXHAUST FANS ARE TO BE SWITCHED TOGETHER. CONTRACTOR SHALL COORDINATE WITH MECHANICAL FOR EXACT LOCATIONS AND REQUIREMENTS PRIOR TO ELECTRICAL ROUGH-IN.
- COMMUNICATION POINTS IN GUEST ROOMS SHALL BE EQUIPPED WITH ACCESSIBLE DEVICES SUCH AS:
  - FIRE 177C FORM STRIKE-TOUCH TELEPHONE SWITCH
  - FIRE ALARM LOW FREQUENCY (520HZ) SOUNDER BASE
  - PHONE ALARM SWITCH
  - TELEPHONE WALL MOUNTED CONTROLS COMPATIBLE WITH OWNER'S PHONE SYSTEM
  - DOOR ARM ONLY SWITCH WITH SIGNAGE
  - ADDITIONAL DEVICES AS REQUIRED PER STANDARD ROOMS
  - COMMUNICATION FEATURES (C.F. ROOMS)
  - INSTALL LED FIRE ALARM HORNS/TROBE IN ROOM
  - INSTALL FIRE ALARM STROBE IN GUEST BATHROOM
  - INSTALL SYSTEM PHOTOELECTRIC SMOKE/CO DETECTOR ON CEILING
  - FIRE ALARM LOW FREQUENCY (520HZ) SOUNDER BASE
  - PROVIDE AUDIBLE VISUAL DOOR ALARM INDICATOR EQUIVALENT TO EDWARDS MODEL 7065-GS WITH EDWARDS MODEL 620 PUSHBUTTON
  - PROVIDE IN ALL BATHROOM COMPARTMENTS, LIVING ROOMS, AND BEDROOMS
- ALL NON-ADA GUEST ROOMS
  - INSTALL SYSTEM COMBINATION CARBON MONOXIDE/PHOTOELECTRIC SMOKE DETECTORS
  - INSTALL LOW FREQUENCY (520HZ) SOUNDER BASE FOR SMOKE DETECTOR
- ALL GUESTROOMS SHALL HAVE 70DBA MINIMUM AT PILLOW LEVEL (FIRE ALARM)
- PTAC UNITS - PROVIDE ELECTRICAL CONNECTION AND DISCONNECT AS INDICATED PER EQUIPMENT IN BRAND STANDARDS/PROTOTYPICAL DRAWINGS.
- ALL CONTROLS FOR USE BY GUEST MUST BE MOUNTED AT BETWEEN 15" AFF AND 48" AFF AND PROVIDE A 30"x48" FLOOR AREA IN COMPLIANCE WITH ACCESSIBILITY STANDARDS. OPERABLE CONTROLS LOCATION OVER AN OBSTRUCTION DEEPER THAN 10" MUST BE MOUNTED NO HIGHER THAN 48" AFF. ACCESSIBLE CONTROLS MUST NOT REQUIRE TIGHT GRASPING, PINCHING OR TWISTING OF THE WRIST.
- IN ACCESSIBLE ROOMS, AT LEAST ONE OUTLET AND DATA CONNECTION FOR USING BY GUESTS MUST BE MOUNTED BETWEEN 15" AND 48" AFF AND PROVIDE A CLEAR FLOOR AREA IN COMPLIANCE WITH ACCESSIBLE STANDARDS.
- OBJECTS MOUNTED WITHIN THE CIRCULATION PATH IN ACCESSIBLE ROOMS BETWEEN 27" AND 80" AFF SHALL NOT PROJECT FURTHER THAN 4" FROM WALL.
- ALL GUESTROOM LIGHT FIXTURES SHALL HAVE WARM WHITE, INSTANT START FLICKER FREE, 2700K LAMPS. COORDINATE WITH LATEST BRAND STANDARDS PRIOR TO ORDERING.
- ALL GUESTROOM LOW VOLTAGE WIRING MUST BE INSTALLED IN CONDUIT FROM ROOMS TO THE ACCESSIBLE CEILING IN CONDUIT. THIS INCLUDES CATV, HSB & TELEPHONE WIRING.
- MOUNT ALL COFFEE AND MICROWAVE RECEPTACLES SHALL BE MOUNTED AT HEIGHT INDICATED PER ARCHITECTURAL INTERIOR ELEVATIONS.
- ALL HARDWIRED LIGHTS SHALL BE CONTROLLED BY MASTER SWITCH LOCATED AT GUESTROOM ENTRY DOOR.
- PROVIDE MOBILE KEY CERTIFIED RFID LOCK SYSTEM WITH BLUETOOTH LOW ENERGY KEY READERS AT GUESTROOM ENTRIES. COORDINATE WITH INTERIORS PRIOR TO ROUGH-IN WORK.

**KEYED NOTES THIS SHEET**

- CONNECTION FOR PTAC UNIT. COORDINATE AND PROVIDE WIRING DEVICE AND FINAL CONNECTION. VERIFY WITH MANUFACTURE. FF&E & PROVIDE DISCONNECT AS REQUIRED.
- IN BATHROOM LOCATIONS, LIGHT SWITCHES SHALL BE EQUIPPED WITH NIGHTLIGHT. MAINTAIN 2" DISTANCE FROM ALL OTHER DEVICES. MOUNT SO TOP OF SWITCH IS 48" MAX AFF.
- BLACK OUT ROLLER SHADE. PROVIDE FINAL ELECTRICAL CONNECTION AS REQUIRED FOR INSTALLATION.
- DEDICATED CIRCUIT FOR DISHWASHER. PROVIDE SWITCH ABOVE COUNTER FOR DISCONNECT. COORDINATE INSTALLATION ROUGH-IN LOCATION WITH ARCHITECTURAL ELEVATIONS PRIOR TO ANY WORK.
- CONNECT MICROWAVE AND ABOVE COUNTER RECEPTACLE TO SAME CIRCUIT.
- PROVIDE DEDICATED CIRCUIT FOR GARBAGE DISPOSAL. SEE HADG FOR LOCATION OF SWITCH IN ACCESSIBLE ROOMS.
- SWITCH FOR GARBAGE DISPOSAL AND DISHWASHER.
- PROVIDE COMBINATION SMOKE/CO DETECTORS WITH SOUNDER BASES IN STANDARD ROOMS. PROVIDE SMOKE/CO DETECTOR WITH HORN/STROBE IN C.F. ROOMS.
- EXTEND J-BOX, DEVICE AND COVER PLATE FLUSH WITH MILLWORK BACK PANEL.
- WALL SCENE (WALL SCENE AT ACCESSIBLE ROOM MUST NOT PROJECT MORE THAN 4" FROM WALL). HARDWIRE FIXTURE TO WALL SWITCH. VERIFY ROUGH-IN WITH ELEVATIONS.
- DOORBELL ON/OFF SWITCH (C.F. ROOMS ONLY).
- PROVIDE CAT6 CABLE TO CONNECTIVITY PANEL LOCATED IN MILLWORK.
- SWITCHES CONTROLLING MECHANICAL SHADES. REFER TO FF&E MANUAL.
- OUTLET ABOVE FOR MICROWAVE. SEE ELEVATIONS FOR ROUGH-IN LOCATION. MOUNT DEVICE HORIZONTALLY. FACE PLATE SHALL BE WHITE.
- DATA/POWER FOR CONNECTIVITY PANEL.
- ADDITIONAL HORN STROBE LOCATED IN C.F. BATHROOMS ONLY.
- WHEN AN OPTIONAL WIRED CONNECTION FOR GUEST IS ALSO PROVIDED, ANOTHER CAT6-RJ45 CABLE TERMINATED ON AN 8-PIN RJ45 FEMALE JACK SHALL BE PROVIDED ON THE WALL BELOW THE DESK/WORK AREA. MAINTAIN 6" CLEARANCE FROM ALL OTHER OUTLETS AND DEVICES. A PATCH CORD SHOULD BE PROVIDED AT THE DESKTOP FOR GUEST CONVENIENCE.
- EACH CABLE SHALL BE HOMERUN BETWEEN GUESTROOM AND THE IDF ON EACH FLOOR.
- PROVIDE (1) CAT6-RJ45 CABLE IN EVERY GUESTROOM ON THE WALL BELOW THE DESK/WORK AREA TERMINATED ON A 8-PIN RJ45 FEMALE CONNECTION JACK FOR WIRELESS ACCESS POINT INFRASTRUCTURE (LINE POWERED WAP). COORDINATE WAP LOCATION WITH CASEGOODS TO AVOID CONFLICT.
- PROVIDE SHALLOW BACKBOX AND COORDINATE WITH LOCATION OF POCKET DOOR. VERIFY SWITCHES PLACEMENT WITH INTERIOR ELEVATIONS PRIOR TO ANY ROUGH-IN WORK.
- LIGHTING SHALL BE INTERFACED WITH DIGITAL THERMOSTAT FOR COMPLIANCE OF 2018 NCECC. PROVIDE AND INSTALL DOOR CONTACT, LIGHTING RELAY AND WIRING FOR COMPLIANCE.

ALL 120 VOLT, 15 & 20 AMP RECEPTACLES IN GUESTROOMS SHALL BE TAMPER RESISTANT PER NEC 2017 SECTION 406.12(B).

GUESTROOM DEVICE MOUNTING HEIGHTS  
SEE ARCHITECTURAL ELEVATIONS FOR RESPECTIVE MOUNTING HEIGHTS FOR EACH RESPECTIVE LOCATION.

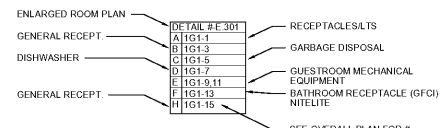


1 QUEEN/QUEEN STUDIO  
E.302 SCALE: 1/4" = 1'-0"

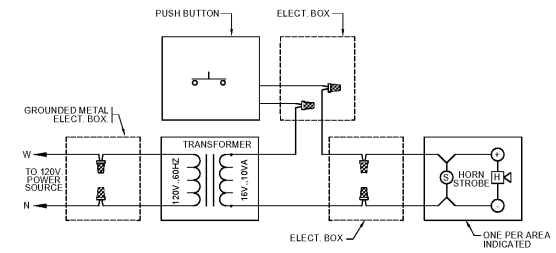
2 QUEEN/QUEEN STUDIO - ADA  
E.302 SCALE: 1/4" = 1'-0"

3 QUEEN/QUEEN STUDIO LONG  
E.302 SCALE: 1/4" = 1'-0"

**Order Plans @**



4 GUESTROOM CIRCUIT KEY  
E.302 NO SCALE



NOTES:  
1. SEE ARCHITECTURAL PLANS FOR LOCATIONS OF DEVICES. COORDINATE THE LOCATIONS OF DEVICES WITH ARCHITECT.

5 WIRING DIAGRAM OF VISUAL/AUDIBLE NOTIFICATION DEVICES FOR HEARING IMPAIRED AND ACCESSIBLE UNITS (10VA)  
E.302 NO SCALE