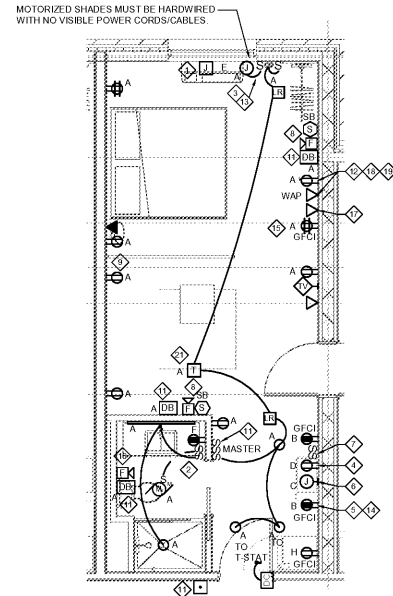
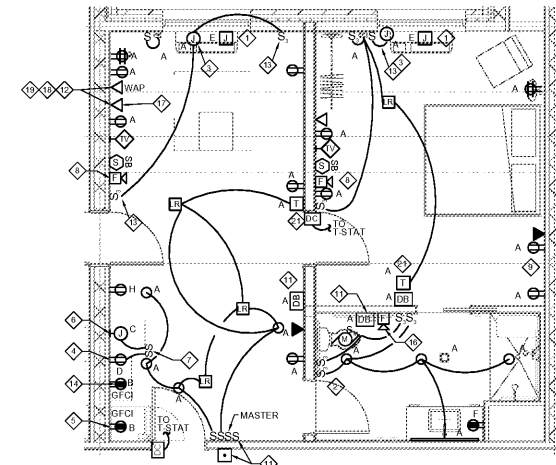


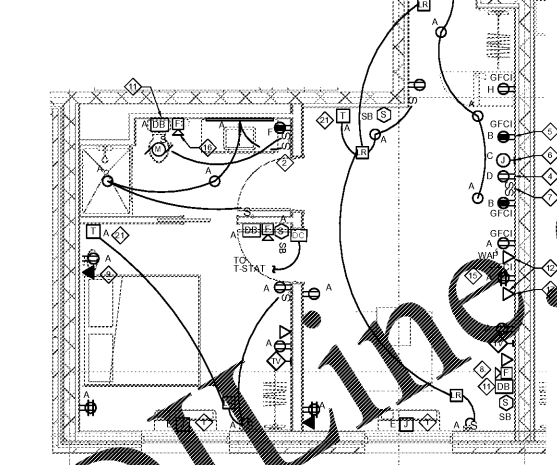
1 KING STUDIO
E.301 SCALE: 1/4" = 1'-0"



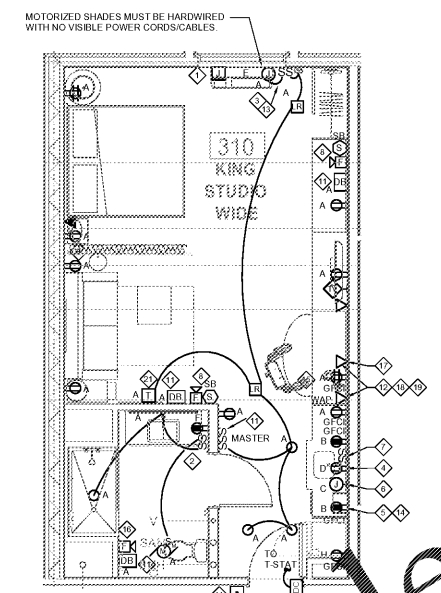
2 KING STUDIO CONN.
E.301 SCALE: 1/4" = 1'-0"



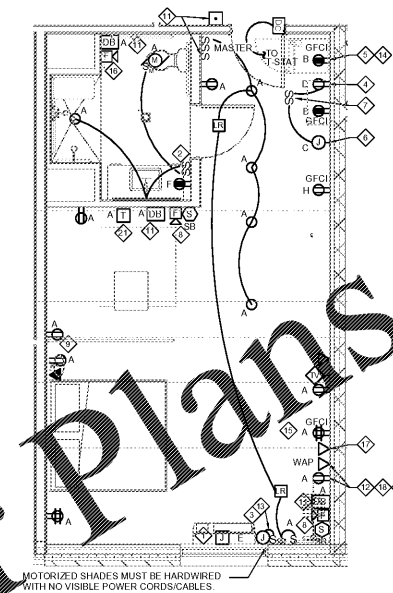
3 KING SUITE ADA
E.301 SCALE: 1/4" = 1'-0"



4 KING SUITE END
E.301 SCALE: 1/4" = 1'-0"



5 KING SUITE WIDE
E.301 SCALE: 1/4" = 1'-0"



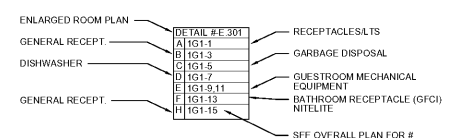
6 KING STUDIO ADA
E.301 SCALE: 1/4" = 1'-0"

KEYED NOTES THIS SHEET

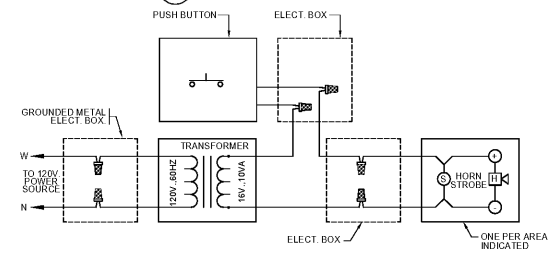
- CONNECT TO THE PFC UNIT. COORDINATE AND PROVIDE WIRING DEVICE AND FINAL CONNECTION WITH MANUFACTURE. FF&E & PROVIDE DISCONNECT AS REQUIRED.
- CONNECTION FROM ALL DEVICES. LIGHT SWITCH SHALL BE EQUIPPED WITH NIGHTLIGHT. MAINTAIN 2" FROM ALL DEVICES. MOUNT TO TOP OF SWITCH & 4" MAX AFF.
- INSTALL ROLLER SHUTTER. PROVIDE FINAL ELECTRICAL CONNECTION AS REQUIRED FOR INSTANT TO BE CONCEALED. COORDINATE WITH WINDOW TREATMENT.
- DEDICATED CIRCUIT FOR DISHWASHER. PROVIDE SWITCH ABOVE COUNTER FOR DISCONNECT. COORDINATE INSTALLATION WITH ARCHITECTURAL ELEVATIONS PRIOR TO ANY WORK.
- CONNECT MICROWAVE AND ABOVE COUNTER RECEPTACLE TO SAME CIRCUIT.
- PROVIDE DEDICATED CIRCUIT FOR GARBAGE DISPOSAL. SEE HADD FOR LOCATION OF SWITCH IN ACCESSIBLE ROOMS.
- SWITCH FOR GARBAGE DISPOSAL AND DISHWASHER.
- PROVIDE COMBINATION SMOKE/CO DETECTORS WITH SOUNDER BASES IN STANDARD ROOMS. PROVIDE SMOKE DETECTOR WITH HORNS STROBE IN C.F. ROOMS.
- EXTEND J-BOX, DEVICE AND COVER PLATE FLUSH WITH MILLWORK BACK PANEL.
- WALL SCONCE (WALL SCONCE AT ACCESSIBLE ROOM MUST NOT PROJECT MORE THAN 4" FROM WALL. HARDWARE FIXTURE TO WALL SWITCH. VERIFY ROUGH-IN WITH ELEVATIONS).
- DOORBELL ON/OFF SWITCH (C.F. ROOMS ONLY).
- PROVIDE CAT6 CABLE TO CONNECTIVITY PANEL LOCATED IN MILLWORK.
- SWITCHES CONTROLLING MECHANICAL SHADES. REFER TO FF&E MANUAL.
- OUTLET ABOVE FOR MICROWAVE. SEE ELEVATIONS FOR ROUGH-IN LOCATION. MOUNT DEVICE HORIZONTALLY. FACE PLATE SHALL BE WHITE.
- DATA POWER FOR CONNECTIVITY PANEL.
- ADDITIONAL HORN STROBE LOCATED IN C.F. BATHROOMS ONLY.
- WHEN AN OPTIONAL WIRED CONNECTION FOR GUEST IS ALSO PROVIDED, ANOTHER CAT6-RJ45 CABLE TERMINATED ON AN 8-PIN RJ45 FEMALE JACK SHALL BE PROVIDED ON THE WALL BELOW THE DESKWORK AREA. MAINTAIN 6" CLEARANCE FROM ALL OTHER OUTLETS AND DEVICES. A PATCH CORD SHOULD BE PROVIDED AT THE DESKTOP FOR GUEST CONVENIENCE.
- EACH CABLE SHALL BE HOMERUN BETWEEN GUESTROOM AND THE BIF ON EACH FLOOR.
- PROVIDE (1) CAT6-RJ45 CABLE IN EVERY GUESTROOM ON THE WALL BELOW THE DESKWORK AREA. TERMINATED ON A 8-PIN RJ45 FEMALE CONNECTION JACK FOR WIRELESS ACCESS POINT INFRASTRUCTURE (LINE POWERED WAP). COORDINATE WAP LOCATION WITH CASEGOODS TO AVOID CONFLICT.
- PROVIDE SHALLOW BACKBOX AND COORDINATE WITH LOCATION OF POCKET DOOR. VERIFY SWITCHES PLACEMENT WITH INTERIOR ELEVATIONS PRIOR TO ANY ROUGH-IN WORK.

ALL 120 VOLT 15 & 20 AMP RECEPTACLES IN GUESTROOMS SHALL BE TAMPER RESISTANT PER NEC 2017 SECTION 406.12(B).

GUESTROOM DEVICE MOUNTING HEIGHTS
SEE ARCHITECTURAL ELEVATIONS FOR RESPECTIVE MOUNTING HEIGHTS FOR EACH RESPECTIVE LOCATION.



GUESTROOM CIRCUIT KEY



NOTES:
1. SEE ARCHITECTURAL PLANS FOR LOCATIONS OF DEVICES. COORDINATE THE LOCATIONS OF DEVICES WITH ARCHITECT.

WIRING DIAGRAM OF VISUAL/AUDIBLE NOTIFICATION DEVICES FOR HEARING IMPAIRED AND ACCESSIBLE UNITS (10VA)

NO SCALE

GUESTROOM GENERAL NOTES

- CONTRACTOR SHALL COORDINATE WITH ARCHITECTURAL ELEVATION DETAILS, PROTOTYPICAL DRAWINGS, FIELD CONDITIONS & OWNER FOR EXACT LOCATIONS AND MOUNTING HEIGHTS PRIOR TO ANY ELECTRICAL ROUGH-IN WORK.
- REFER TO OVERALL ELECTRICAL PLANS FOR CIRCUIT NUMBERS. THE ELECTRICAL CONTRACTOR SHALL ALSO REFER TO PANEL SCHEDULES AND RISER DIAGRAMS FOR ADDITIONAL INFORMATION.
- AT WALLS BETWEEN ADJACENT ROOMS, ELECTRICAL OUTLET LOCATIONS, INCLUDING LOW VOLTAGE RECESSED, SHALL BE OFFSET A MINIMUM OF SIX INCHES HORIZONTALLY WHEN ROUGHING IN. ELECTRICAL CORDS SHALL BE HIDDEN FROM VIEW AND BACK TO BACK LOCATIONS ARE STRICTLY PROHIBITED.
- LIGHT SWITCH AND GFCH OUTLETS SHALL BE MOUNTED IN A COMMON BOX WITH COVER PLATE. COORDINATE ALL CLEARANCES WITH FF&E EQUIPMENT/DRAWINGS/TRADES PRIOR TO ROUGH-IN.
- HEIGHT OF ALL SWITCHES, OUTLETS, ETC. TO MEET ACCESSIBILITY STANDARDS FOR MAXIMUM AND MINIMUM REACH RANGE. FEDERAL AND LOCAL CODES APPLY AND THE MOST STRINGENT STANDARD PREVAILS. VERIFY WITH BRAND STANDARD TOGGLE OR DECORA TYPE SWITCHES.
- ELECTRICAL OUTLETS AT DESKS ARE TO BE COORDINATED WITH LATEST BRAND STANDARDS.
- MANY GUESTBATH LIGHT FIXTURE AND EXHAUST FANS ARE TO BE SWITCHED TOGETHER. CONTRACTOR SHALL COORDINATE WITH MECHANICAL FOR EXACT LOCATIONS AND REQUIREMENTS PRIOR TO ELECTRICAL ROUGH-IN.
- COMMUNICATION FEATURES (C.F.) ROOMS SHALL BE EQUIPPED WITH ACCESSIBLE DEVICES SUCH AS, BUT NOT LIMITED TO THE FOLLOWING:
 - FIRE 177CD ALARM STROBES
 - FIRE ALARM SMOKE DETECTOR STROBES
 - FIRE ALARM LOW FREQUENCY (520HZ) SOUNDER BASE
 - DOOR ALARMS STROBE
 - TELEPHONE WITH VOLUME CONTROLS COMPATIBLE WITH OWNER'S PHONE SYSTEM
 - DOOR ALARM ON/OFF SWITCH WITH SIGNAGE
 - ADDITIONAL DEVICES AS REQUIRED PER STANDARD ROOMS
 - AT ALL ADA AND COMMUNICATION FEATURES (C.F.) ROOMS
 - INSTALL 177CD FIRE ALARM HORN STROBE IN ROOM
 - INSTALL FIRE ALARM STROBE IN GUEST BATHROOM
 - INSTALL SYSTEM PHOTOELECTRIC SMOKE/CO DETECTOR ON CEILING
 - FIRE ALARM LOW FREQUENCY (520HZ) SOUNDER BASE
 - PROVIDE AUDIBLE VISUAL DOOR ALARM/ANNUNCIATOR EQUIVALENT TO EDWARDS MODEL 705-65 WITH EDWARDS MODEL 620 PUSHBUTTON
 - PROVIDE IN ALL BATHROOM COMPARTMENTS, LIVING ROOMS, AND BEDROOMS.
- ALL NON-ADA GUESTROOMS:
 - INSTALL SYSTEM COMBINATION CARBON MONOXIDE/PHOTOELECTRIC SMOKE DETECTORS
 - INSTALL LOW FREQUENCY (520HZ) SOUNDER BASE FOR SMOKE DETECTOR
 - ALL GUESTROOMS SHALL HAVE 7000A MINIMUM AT PILEW LEVEL (FIRE ALARM)
 - PFAC UNITS. PROVIDE ELECTRICAL CONNECTION AND DISCONNECT AS INDICATED PER EQUIPMENT IN BRAND STANDARDS/PROTOTYPICAL DRAWINGS
- ALL CONTROLS FOR USE BY GUEST MUST BE MOUNTED AT BETWEEN 15" AFF AND 48" AFF AND PROVIDE A 30"x48" FLOOR AREA IN COMPLIANCE WITH ACCESSIBILITY STANDARDS OPERABLE CONTROLS LOCATION OVER AN OBSTRUCTION DEEPER THAN 10" MUST BE MOUNTED NO HIGHER THAN 48" AFF. ACCESSIBLE CONTROLS MUST NOT REQUIRE THIGHT GRASPING, PINCHING OR TWISTING OF THE WRIST.
- IN ACCESSIBLE ROOMS, AT LEAST ONE OUTLET AND DATA CONNECTION FOR USING BY GUESTS MUST BE MOUNTED BETWEEN 15" AND 48" AFF AND PROVIDE A CLEAR FLOOR AREA IN COMPLIANCE WITH ACCESSIBILITY STANDARDS
- OBJECTS MOUNTED WITHIN THE CIRCULATION PATH IN ACCESSIBLE ROOMS BETWEEN 27" AND 80" AFF SHALL NOT PROTRUDE FURTHER THAN 4" FROM WALL.
- ALL GUESTROOM LIGHT FIXTURES SHALL HAVE WARM WHITE, INSTANT START FLICKER FREE, 2700K LAMPS. COORDINATE WITH LATEST BRAND STANDARDS PRIOR TO ORDERING
- ALL GUESTROOM LOW VOLTAGE WIRING MUST BE INSTALLED IN CONDUIT FROM ROOMS TO THE ACCESSIBLE CEILING IN CORRIDOR. THIS INCLUDES CATV, HSIA & TELEPHONE WIRING.
- MOUNT ALL COFFEE AND MICROWAVE RECEPTACLES SHALL BE MOUNTED AT HEIGHT INDICATED PER ARCHITECTURAL INTERIOR ELEVATIONS
- ALL HARDWIRED LIGHTS SHALL BE CONTROLLED BY MASTER SWITCH LOCATED AT GUESTROOM ENTRY DOOR
- PROVIDE MOBILE KEY CERTIFIED RFID LOCK SYSTEM WITH BLUETOOTH LOW ENERGY KEY READER AT GUESTROOM ENTRIES. COORDINATE WITH INTERIORS PRIOR TO ROUGH-IN WORK.
- LIGHTING SHALL BE INTERFACED WITH DIGITAL THERMOSTAT FOR COMPLIANCE OF 2018 NCCCO. PROVIDE AND INSTALL DOOR CONTACT LIGHTING RELAY AND WIRING FOR COMPLIANCE. "LR" RELAY SHALL BE INSTALLED IN A 2-GANG JUNCTION BOX. COORDINATE DOOR CONTACT INSTALLATION WITH ARCHITECTURAL DOOR HARDWARE PRIOR TO ROUGH-IN.

GUEST ROOM LUMINAIRE SCHEDULE

LOCATION	TYPE	FIXTURE WATTAGE	VOLTAGE	DESCRIPTION
BATHROOM DOWN LIGHT	R3	SEE SHEET E-003	120V	RECESSED WET LOCATION DOWN LIGHT. FIXTURE CONNECTED TO CIRCUIT 'A'
SHOWER DOWN LIGHT	R5	SEE SHEET E-003	120V	SHALLOW UL LISTED FOR WET LOCATION RECESSED DOWN LIGHT. FIXTURE CONNECTED TO CIRCUIT 'A'
ENTRY DOWN LIGHT	R7	SEE SHEET E-003	120V	RECESSED DOWN LIGHT. FIXTURE CONNECTED TO CIRCUIT 'A'
TABLE DOWN LIGHT	R7	SEE SHEET E-003	120V	RECESSED DOWN LIGHT. FIXTURE CONNECTED TO CIRCUIT 'A'
WALL SCONCE	GR1	SEE SHEET E-003	120V	SURFACE MOUNTED SCONCE. SEE ARCH ELEVATIONS FOR LOCATION. FIXTURE CONNECTED TO CIRCUIT 'A'
PATIO BALCONY	GR3	SEE SHEET E-003	120V	SURFACE MOUNTED LED LIGHT. UL LISTED FOR WET LOCATION. FIXTURE CONNECTED TO CIRCUIT 'A'
VANITY	GR2	SEE SHEET E-003	120V	UL LISTED FOR DAMP LOCATION. FIXTURE CONNECTED TO CIRCUIT 'A'