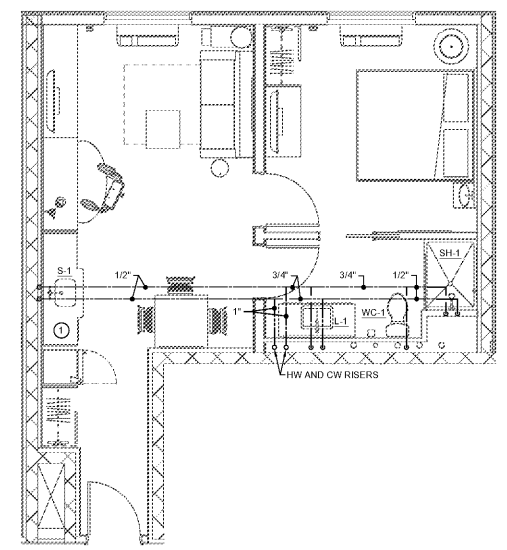
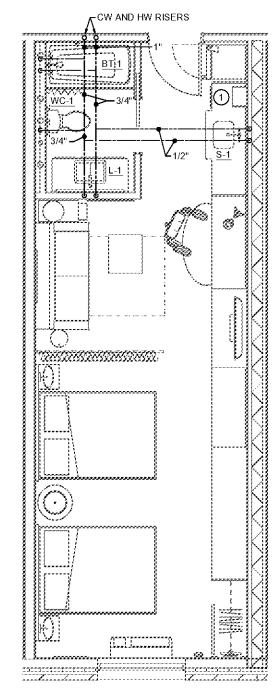


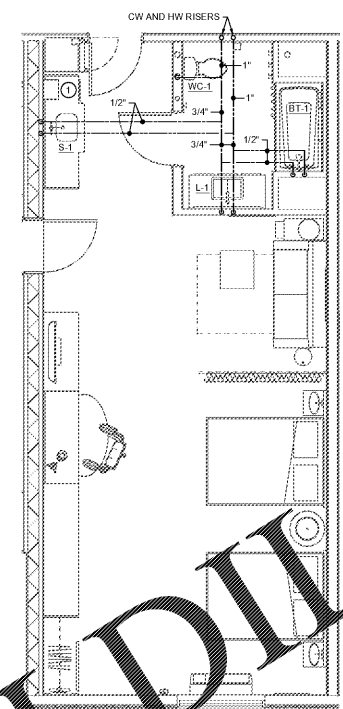
1 KING SUITE
P.202 SCALE: 1/4" = 1'-0"



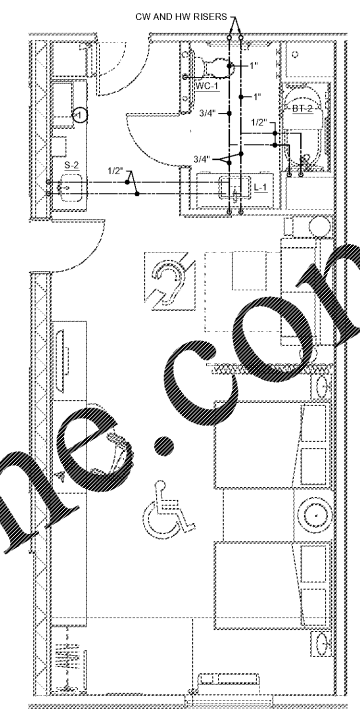
4 KING SUITE END
P.202 SCALE: 1/4" = 1'-0"



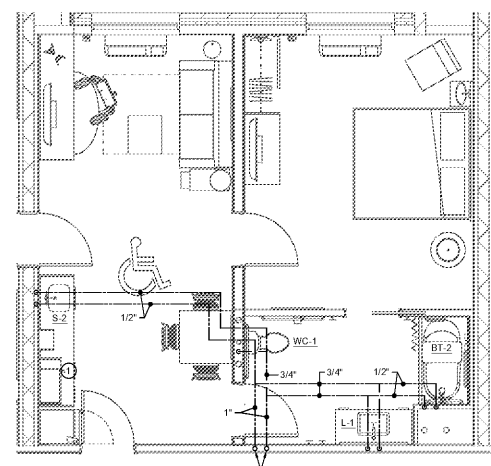
5 DBL QUEEN STUDIO
P.202 SCALE: 1/4" = 1'-0"
TYPICAL FOR DBL QUEEN STUDIO CORN AND FOR DBL QUEEN STUDIO LG



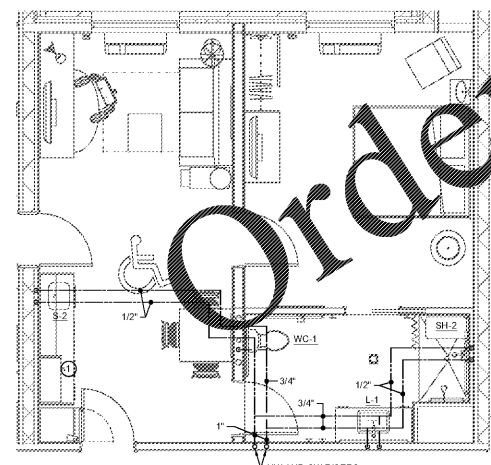
6 DBL QUEEN STUDIO LG CONN.
P.202 SCALE: 1/4" = 1'-0"



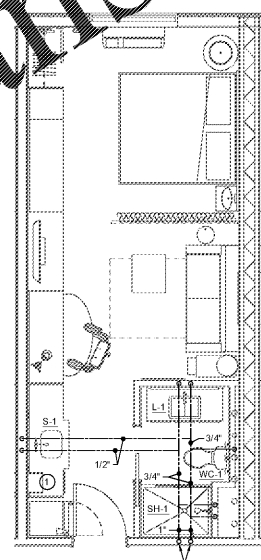
7 DBL QUEEN STUDIO ADA (TUB)
P.202 SCALE: 1/4" = 1'-0"



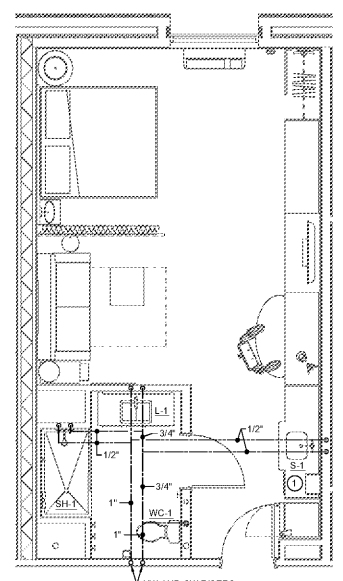
2 KING SUITE ADA (TUB)
P.202 SCALE: 1/4" = 1'-0"



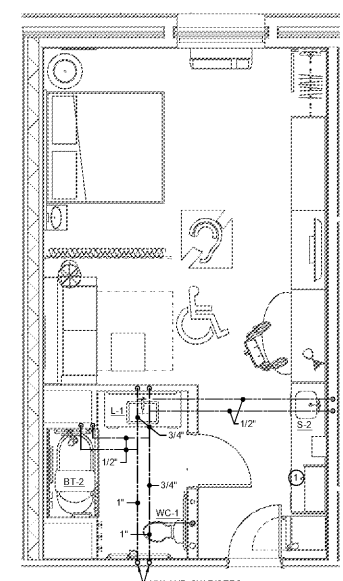
3 KING SUITE ADA (RIS)
P.202 SCALE: 1/4" = 1'-0"



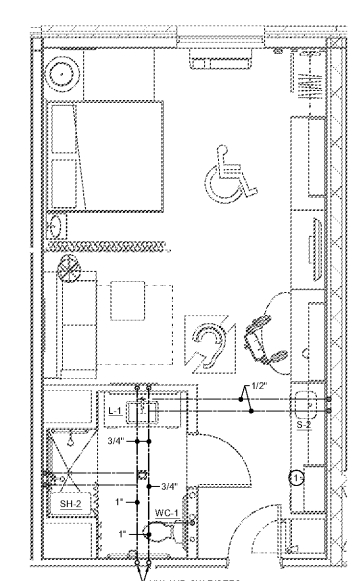
8 KING STUDIO
P.202 SCALE: 1/4" = 1'-0"
TYPICAL FOR KING STUDIO CORN



9 KING STUDIO WIDE
P.202 SCALE: 1/4" = 1'-0"



10 KING STUDIO ADA (TUB)
P.202 SCALE: 1/4" = 1'-0"



11 KING STUDIO ADA (RIS)
P.202 SCALE: 1/4" = 1'-0"

KEYED NOTES THIS SHEET

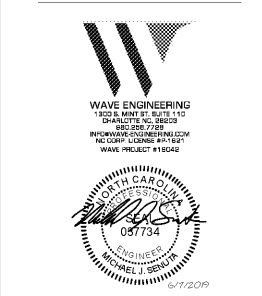
1 EXTEND 1/2" HW TO DISHWASHER FROM SINK HW SUPPLY. PROVIDE BALL VALVE AND PROVIDE WATTS SERIES LF7 DUAL CHECK VALVE, UNLESS DISHWASHER HAS AN INTEGRAL BACKFLOW PREVENTER.

GENERAL NOTES THIS SHEET

1 GUEST ROOM PIPING LAYOUTS ARE TYPICAL FOR EACH TYPE OF GUEST ROOM INDICATED. SEE FLOOR PLANS FOR ROOM LOCATIONS AND ADDITIONAL INFORMATION.

2 SEE FIXTURE SCHEDULE ON SHEET P.002 FOR SIZES OF DOMESTIC WATER CONNECTIONS TO INDIVIDUAL FIXTURES.

3 ALL DOMESTIC WATER PIPING SHOWN ON THIS SHEET SHALL BE RUN ABOVE CEILINGS IN AREAS WITH CEILINGS AND SHALL BE RUN AS HIGH AS POSSIBLE IN AREAS WITHOUT CEILINGS, UNLESS OTHERWISE NOTED.



HOME 2 SUITES BELMONT
HAWLEY AVE
BELMONT, NC 28012

KEY PLAN

| Revisions | | |
|-----------|------|-------------|
| # | Date | Description |
| | | |

Project Number: 18021
Issued for: CONSTRUCTION
Issue Date: 2019.06.07

DRAWING TITLE
ENLARGED GUEST ROOM WATER PLANS

SHEET NUMBER
P.202