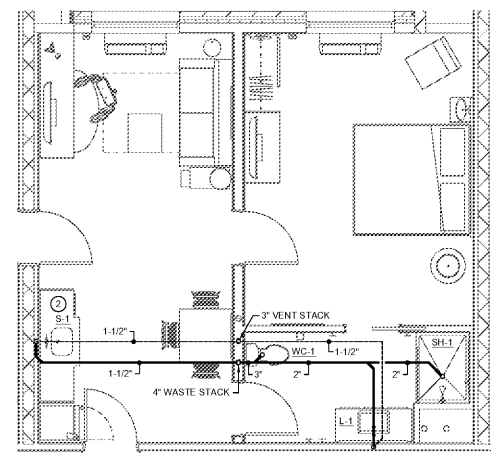
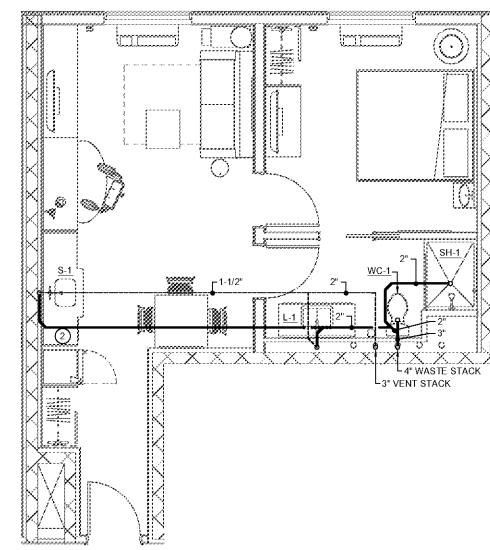


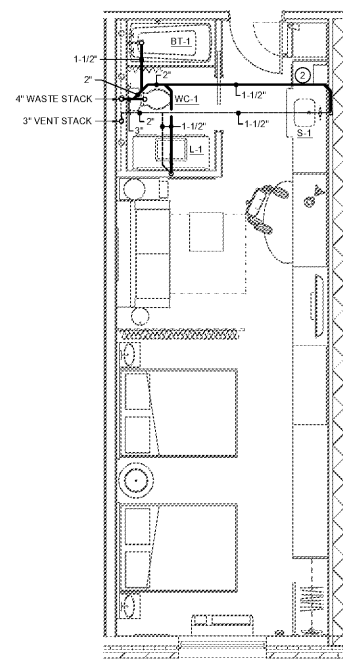
Revisions		
#	Date	Description



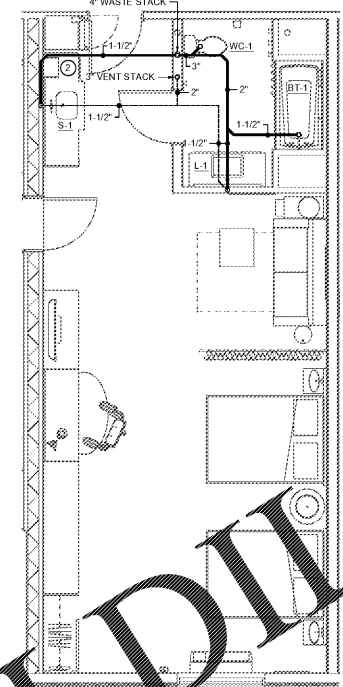
**1 KING SUITE**  
P.201 SCALE: 1/4" = 1'-0"



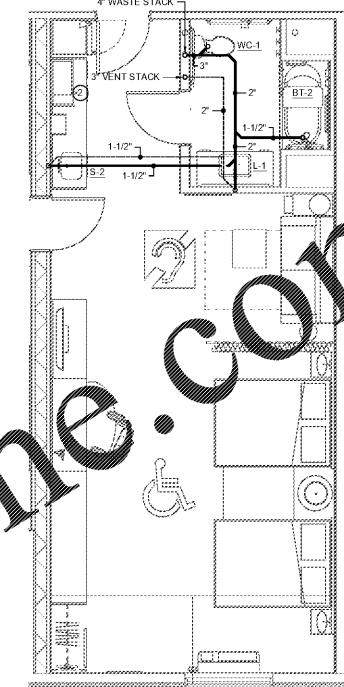
**4 KING SUITE END**  
P.201 SCALE: 1/4" = 1'-0"



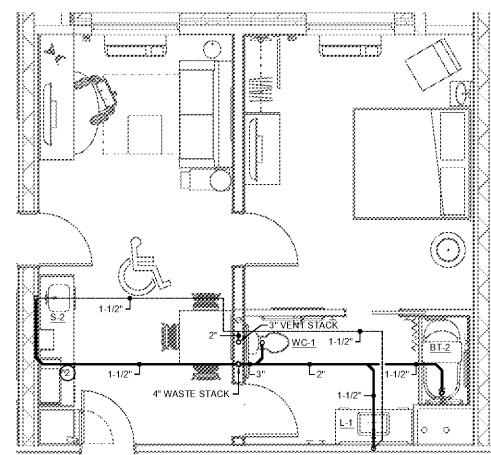
**5 DBL QUEEN STUDIO**  
P.201 SCALE: 1/4" = 1'-0"  
TYPICAL FOR DBL QUEEN STUDIO CORNERS AND FOR DBL QUEEN STUDIO LG.



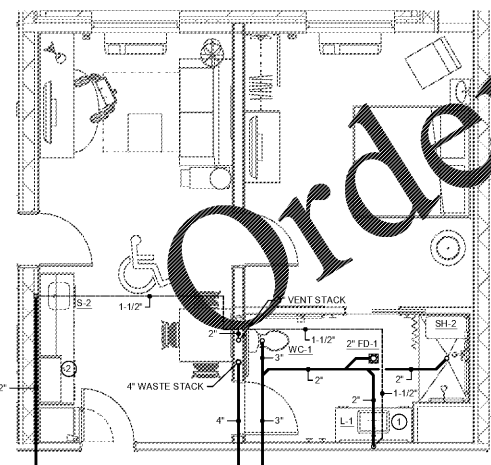
**6 DBL QUEEN STUDIO LG CONN.**  
P.201 SCALE: 1/4" = 1'-0"



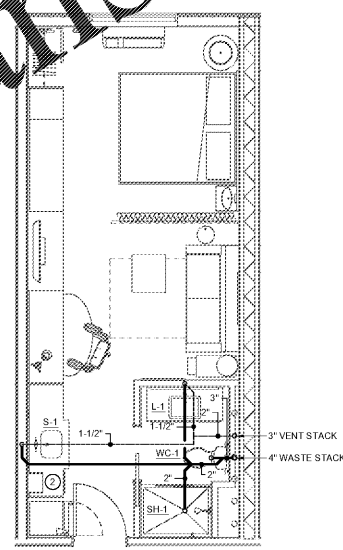
**7 DBL QUEEN STUDIO ADA (TUB)**  
P.201 SCALE: 1/4" = 1'-0"



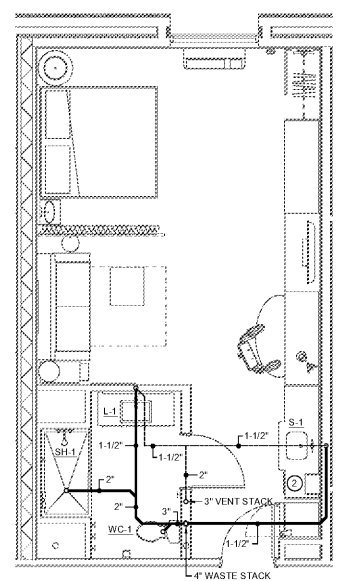
**2 KING SUITE ADA (TUB)**  
P.201 SCALE: 1/4" = 1'-0"



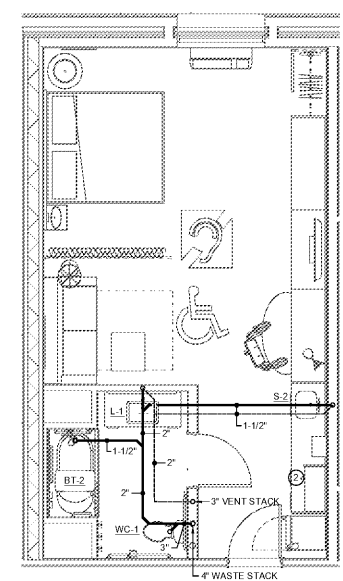
**3 KING SUITE ADA (RIS)**  
P.201 SCALE: 1/4" = 1'-0"



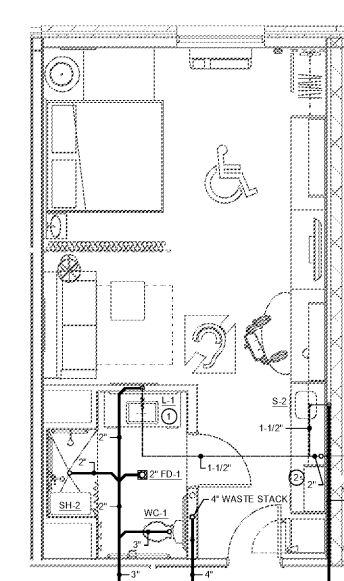
**8 KING STUDIO**  
P.201 SCALE: 1/4" = 1'-0"  
TYPICAL FOR KING STUDIO CORNERS



**9 KING STUDIO WIDE**  
P.201 SCALE: 1/4" = 1'-0"



**10 KING STUDIO ADA (TUB)**  
P.201 SCALE: 1/4" = 1'-0"



**11 KING STUDIO ADA (RIS)**  
P.201 SCALE: 1/4" = 1'-0"

**KEYED NOTES THIS SHEET**

- IN LIEU OF SPECIFIED P-TRAP, PROVIDE JAY R. SMITH MODEL 2898 1" PRIME 4/2" WATER SAVER TRAP PRIMER P-TRAP WITH CLEANOUT PLUG AND PRIMER HOSE. CONNECT 1/2" TRAP PRIMER LINE TO PRIMER HOSE, DROP DOWN IN WALL TO BELOW FLOOR, AND EXTEND BELOW FLOOR TO CONNECTION ON FLOOR DRAIN.
- EXTEND DISHWASHER DRAIN HOSE AND CONNECT TO A WYE BRANCH FITTING ON SINK TAILPIECE. DRAIN HOSE SHALL RISE AND BE SECURELY FASTENED TO THE UNDERSIDE OF THE COUNTERTOP.

**GENERAL NOTES THIS SHEET**

- GUEST ROOM PIPING LAYOUTS ARE TYPICAL FOR EACH TYPE OF GUEST ROOM INDICATED. SEE FLOOR PLANS FOR ROOM LOCATIONS AND ADDITIONAL INFORMATION.
- SEE FIXTURE SCHEDULE ON SHEET P.002 FOR SIZES OF SANITARY WASTE AND VENT CONNECTIONS TO INDIVIDUAL FIXTURES.
- ALL SANITARY VENT PIPING SHOWN ON THIS SHEET SHALL BE RUN ABOVE CEILINGS IN AREAS WITH CEILINGS AND SHALL BE RUN AS HIGH AS POSSIBLE IN AREAS WITHOUT CEILINGS, UNLESS OTHERWISE NOTED. ALL SANITARY WASTE PIPING SHOWN ON THIS SHEET SHALL BE RUN BELOW FLOORS, UNLESS OTHERWISE NOTED.