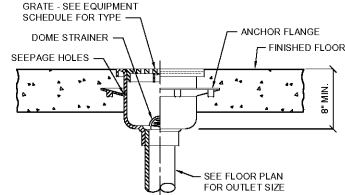
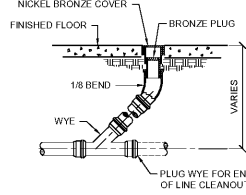


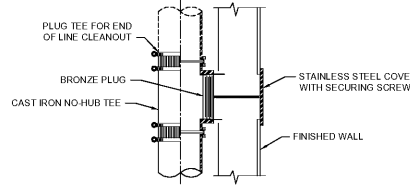
1 FLOOR DRAIN DETAIL
P.003 NOT TO SCALE



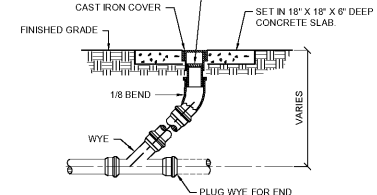
2 FLOOR SINK DETAIL
P.003 NOT TO SCALE



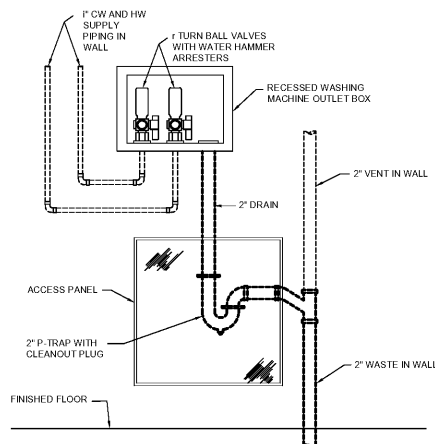
3 FLOOR CLEANOUT DETAIL
P.003 NOT TO SCALE



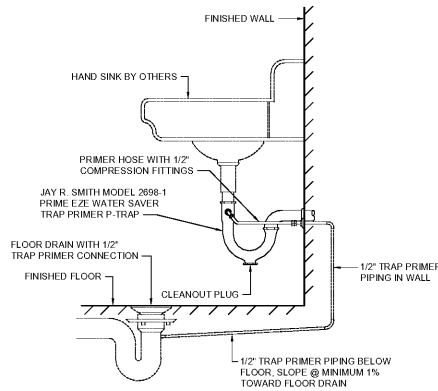
4 WALL CLEANOUT DETAIL
P.003 NOT TO SCALE



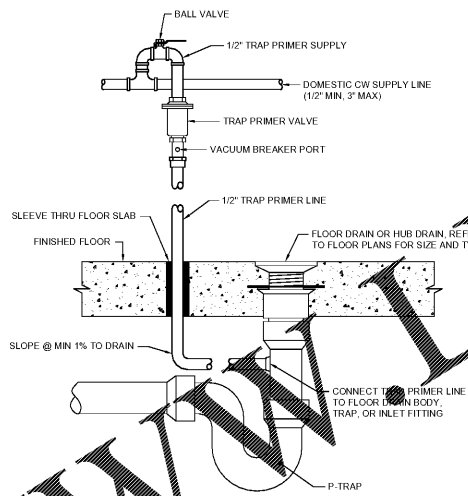
5 GRADE CLEANOUT DETAIL
P.003 NOT TO SCALE



6 WASHING MACHINE OUTLET BOX DETAIL
P.003 NOT TO SCALE

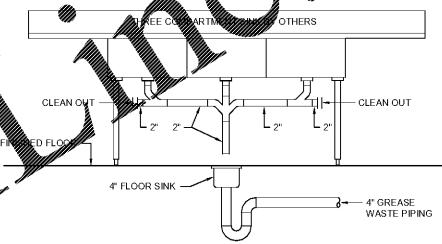


7 TRAP PRIMER DETAIL
P.003 NOT TO SCALE

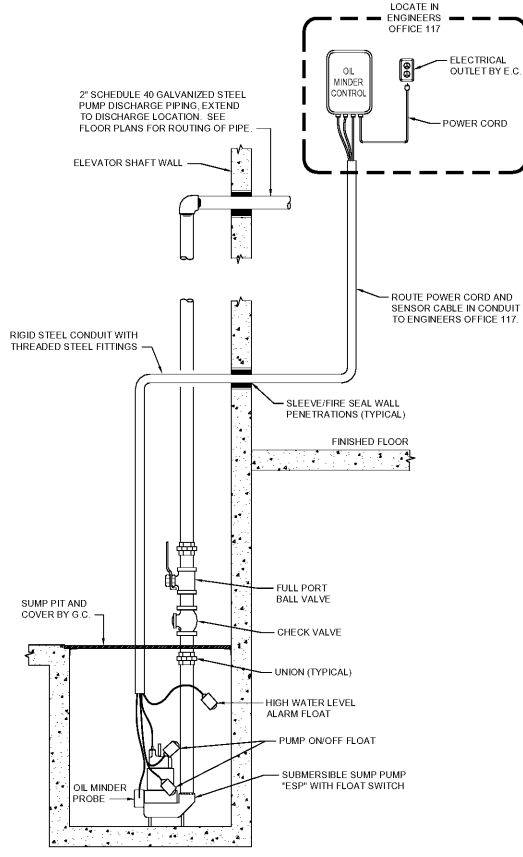


8 TRAP PRIMER DETAIL
P.003 NOT TO SCALE

1. PROVIDE TRAP PRIMER VALVES FOR ALL FLOOR DRAINS AND SINKS, EXCEPT SHOWER DRAINS.
2. TRAP PRIMER VALVES SHALL BE SIOUX CHIEF PRIME PERFECT SERIES 4895, OR EQUAL.
3. CONNECT TRAP PRIMER VALVE TO CW LINE. 1/2" MIN. - 3" MAX.
4. PROVIDE SIOUX CHIEF WYE SPLITTER AND/OR DISTRIBUTOR FOR TRAP PRIMER VALVES SERVING MORE THAN ONE FLOOR DRAIN.
5. MAXIMUM OF EIGHT FLOOR DRAINS MAY BE SERVED BY ONE TRAP PRIMER VALVE.



9 THREE COMPARTMENT SINK DETAIL
P.003 NOT TO SCALE



10 ELEVATOR SUMP PUMP DETAIL
P.003 NOT TO SCALE



Ragone Architecture & Design, PLLC
145A S. Carverbank Road, Charlotte, NC 28209
T: 704.372.5110 www.rad-arch.com



WAVE ENGINEERING
1302 S. MINT ST., SUITE 110
CHARLOTTE, NC 28205
PHONE: 771.888.7718
INFO@WAVEENGINEERING.COM
P.L.L.C. LICENSE #191787
WAVE PROJECT #18042



HOME 2 SUITES BELMONT
HAWLEY AVE
BELMONT, NC 28012

KEY PLAN

Revisions		
#	Date	Description

Project Number: 18021
Issued for: CONSTRUCTION
Issue Date: 2019.06.07

DRAWING TITLE
PLUMBING DETAILS

SHEET NUMBER
P.003

Order Plans @ www.weldline.com