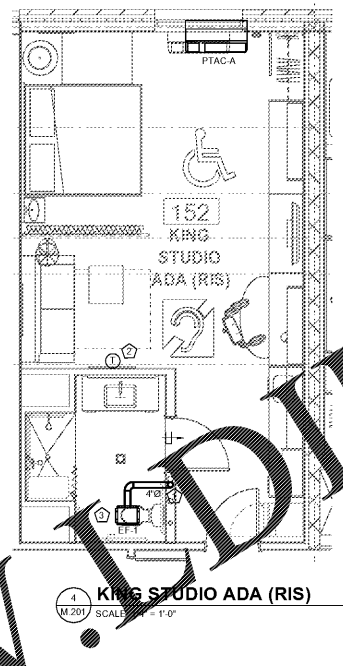
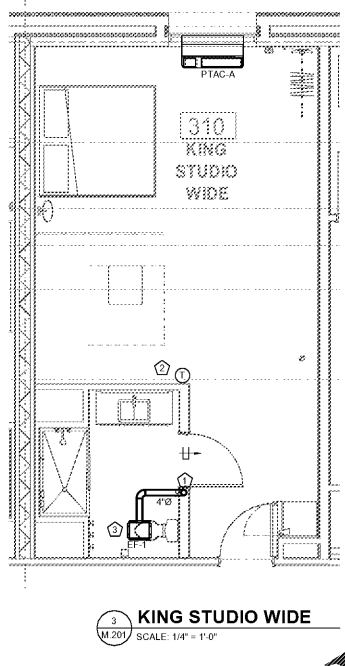
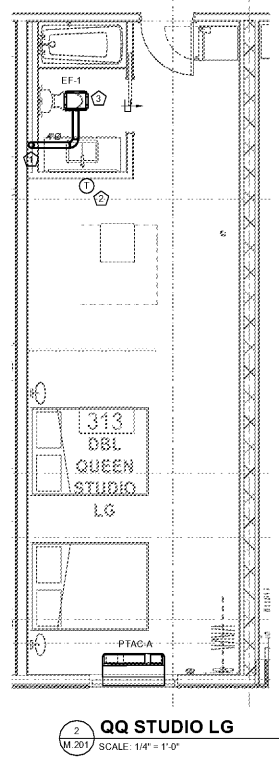
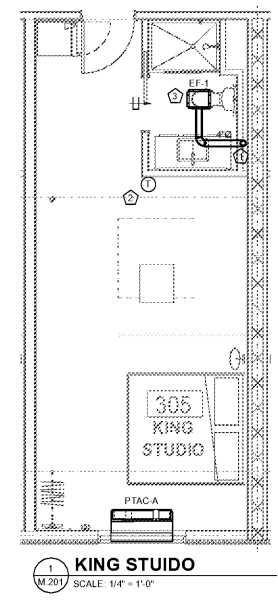
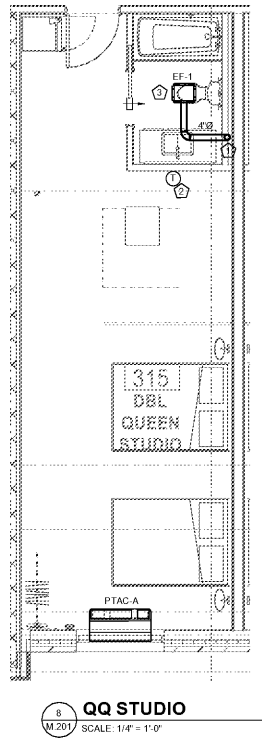
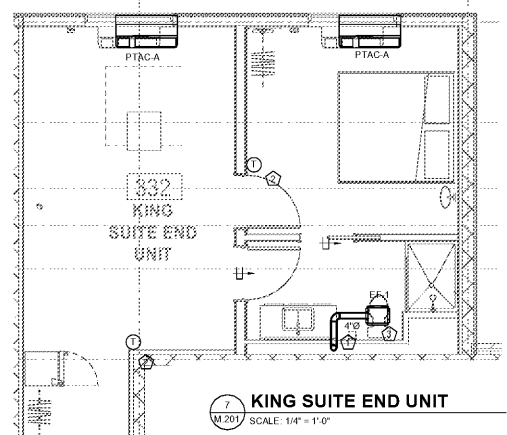
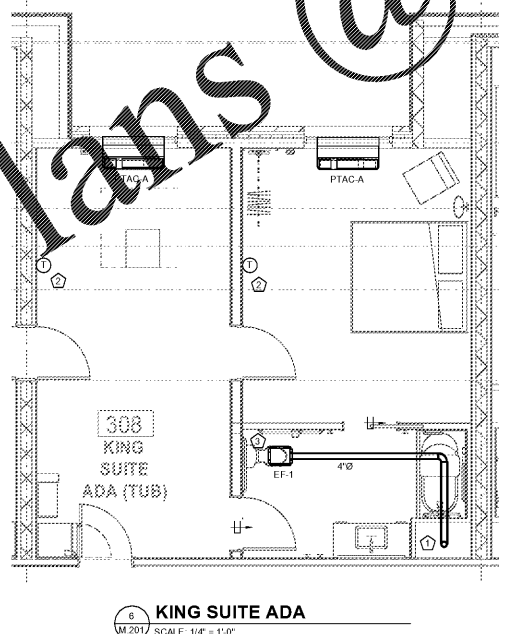
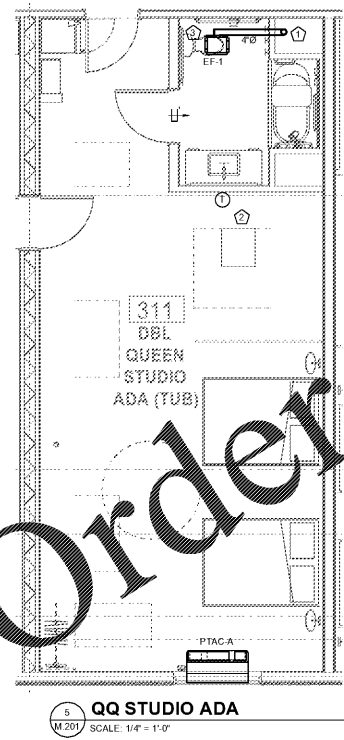


Revisions		
#	Date	Description



KEYED NOTES THIS SHEET

- 1 ROUTE TOILET EXHAUST DUCT IN WALL CAVITY UP TO ROOF CAP. FIRE STOP SHALL BE PENETRATION OF EACH FLOOR. DUCT SHALL BE HARD PIPED FOR ENTIRE LENGTH AND SHALL BE COMBINED WITH ANY OTHER EXHAUST SOURCES.
- 2 PROVIDE ROOM AND THE HALLWAY BRANched STAIRS. PROVIDE THERMOSTAT SHALL BE LOCK WITH ROOM LIGHTING TO PREVENT UNDESIRABLE ENERGY CODE VIOLATION. ITEM 1 PERTAINING TO HOTEL SCHEDULING UNIT.
- 3 COORDINATE EXHAUST LOCATION OF EXHAUST WITH OTHER TRADES OCCUPYING WALL CAVITY.



Order Plans @ www.wildillinc.com