

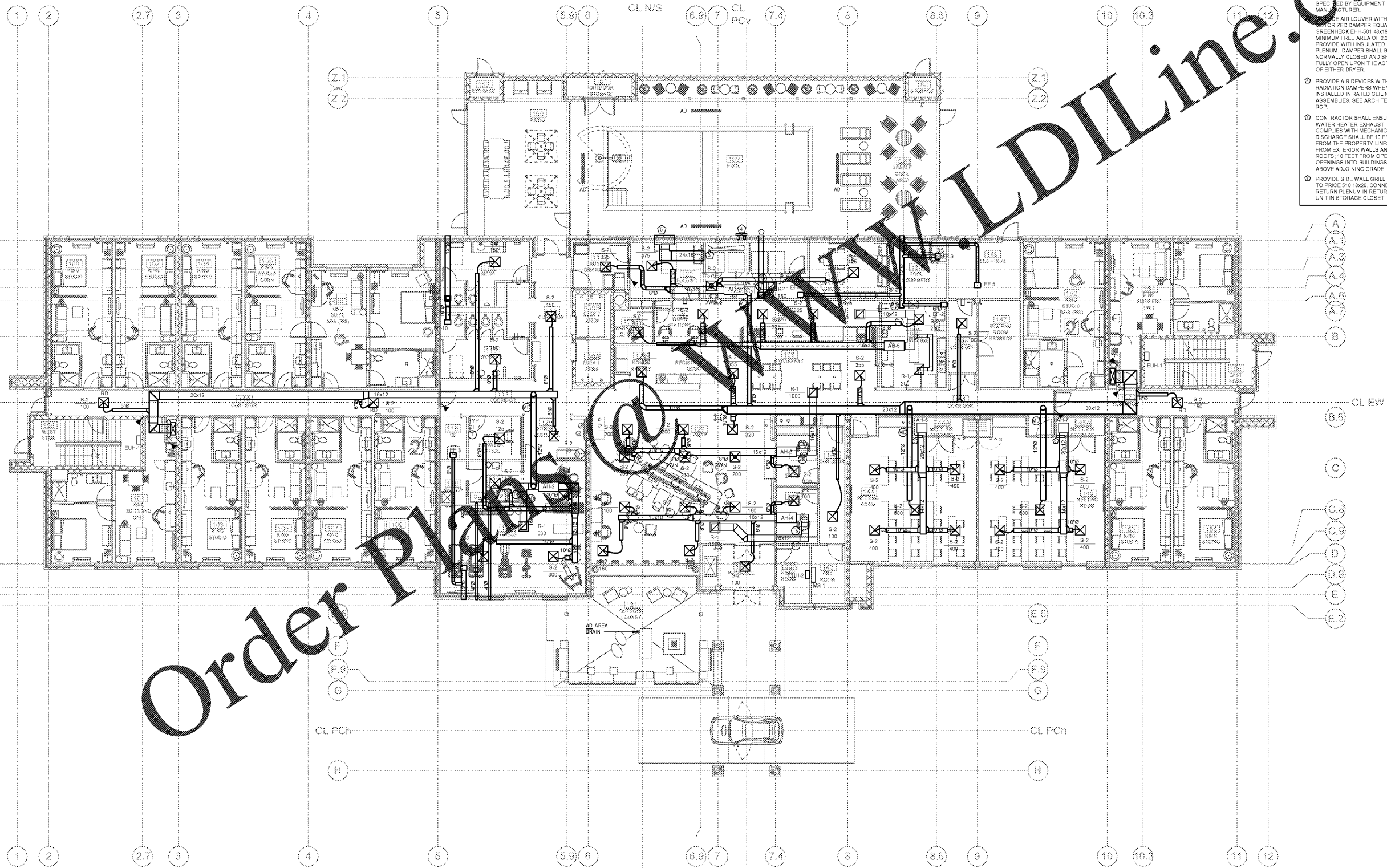
GENERAL NOTE
 DUCTS AND AIR TRANSFER OPENINGS OF FIRE BARRIERS SHALL BE PROTECTED WITH LISTED FIRE DAMPERS INSTALLED IN ACCORDANCE WITH THEIR LISTING. DUCTS AND AIR TRANSFER OPENINGS SHALL NOT PENETRATE ENCLOSURES FOR INTERIOR EXITS, STAIRWAYS AND RAMPWAYS, EXIT PASSAGEWAYS, EXCEPT AS PERMITTED BY SECTIONS 1023.5 AND 1024.6 THE INTERNATIONAL BUILDING CODE SECTION 717.5.2.

EXCEPTION
 FIRE DAMPERS ARE NOT REQUIRED AT PENETRATIONS OF FIRE BARRIERS WHERE ANY OF THE FOLLOWING APPLY:

1. PENETRATIONS ARE TESTED IN ACCORDANCE WITH ASTM E119 OR UL283 AS PART OF THE FIRE RESISTANCE-RATED ASSEMBLY.
2. DUCTS ARE USED AS PART OF AN APPROVED SMOKE CONTROL SYSTEM IN ACCORDANCE WITH SECTION 909 AND WHERE THE USE OF A FIRE DAMPER WOULD INTERFERE WITH THE OPERATION OF A SMOKE CONTROL SYSTEM.
3. SUCH WALL ARE PENETRATED BY DUCTED HVAC SYSTEMS, HAVE REQUIRED FIRE RESISTANCE RATINGS OF 1 HOUR OR LESS, ARE IN AREAS OF OTHER THAN GROUP H AND ARE IN BUILDINGS EQUIPPED THROUGHOUT WITH AN AUTOMATIC SPRINKLER SYSTEM IN ACCORDANCE WITH SECTION 903.3.1.1 OR 903.3.1.2. FOR THE PURPOSES OF THIS EXCEPTION, A DUCTED HVAC SYSTEM SHALL BE A DUCT SYSTEM FOR CONVEYING SUPPLY, RETURN OR EXHAUST AIR AS PART OF THE STRUCTURE'S HVAC SYSTEM. SUCH A DUCT SYSTEM SHALL BE CONSTRUCTED OF SHEET STEEL NOT LESS THAN NO. 26 GAGE THICKNESS AND SHALL BE CONTINUOUS FROM THE AIR HANDLING APPLIANCE OR EQUIPMENT TO THE AIR OUTLET AND INLET TERMINALS.

MECHANICAL FIRST FLOOR PLAN
 SCALE: 1/8" = 1'-0"

- KEYED NOTES THIS SHEET**
- 1. WH FLUOICOMBUSTION AIR VENTS SIZE AND INSTALL PER EQUIP. MANUFACTURERS.
 - 2. PROVIDE OUTSIDE AIR INTAKE WITH WALL GRILLE EQUAL TO SIZE OF DRYER VENT. GRILLE SHALL BE 510 SIZED TO UNIT.
 - 3. SHEET METAL DRYER VENTS SHALL BE MANUFACTURED BY GREENHECK. CONTRACTOR SHALL INSTALL DRYER VENT WITH A FULL SIZE OF DRYER VENT. VENT SHALL BE SPECIFIED BY EQUIPMENT MANUFACTURER.
 - 4. AIR AIR LOUVER WITH AUTHORIZED DAMPER EQUAL TO GREENHECK EHH-501 48X18 WITH A MINIMUM FREE AREA OF 2.32 SQ. FT. PROVIDE WITH INSULATED 18" DEEP PLENUM. DAMPER SHALL BE NORMALLY CLOSED AND SHALL FULLY OPEN UPON THE ACTIVATION OF EITHER DRYER.
 - 5. PROVIDE AIR DEVICES WITH RADIATION DAMPERS WHEN INSTALLED IN RATED CEILING ASSEMBLIES, SEE ARCHITECT'S RCP.
 - 6. CONTRACTOR SHALL ENSURE WATER HEATER EXHAUST COMPLES WITH MECHANICAL CODE DISCHARGE SHALL BE 10 FEET FROM THE PROPERTY LINES, 3 FEET FROM EXTERIOR WALLS AND ROOFS, 10 FEET FROM OPERABLE OPENINGS INTO BUILDINGS, 10 FEET ABOVE ADJACING GRADE.
 - 7. PROVIDE SIDE WALL GRILLE EQUAL TO PRICE 510 18x26. CONNECT INTO RETURN PLENUM IN RETURN OF UNIT IN STORAGE CLOSET.



Order Plans @ www.walddilines.com



Ragone Architecture & Design, PLLC
 145A Salsburg Road, Charlotte, NC 28209
 T: 704.372.0115 www.rad-arch.com



WAVE ENGINEERING
 1806 W. 81st Street, #110
 Charlotte, NC 28203
 704.372.7778
 WAVE PROJECT #18048



HOME 2 SUITES BELMONT
 HAWLEY AVE
 BELMONT, NC 28012

KEY PLAN

Revisions	
#	Description

Project Number: 18021
 Issued for: CONSTRUCTION
 Issue Date: 2019-06-27

DRAWING TITLE
MECHANICAL FIRST FLOOR PLAN

SHEET NUMBER
M.101