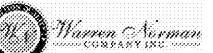
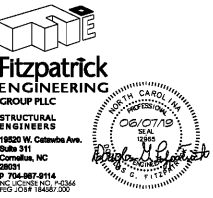




Ragone Architecture & Design, PLLC
145A Sycamore Road, Charlotte, NC 28209
T: 704.372.0118 www.rad-arch.com



**HOME 2
SUITES
BELMONT**
HAWLEY AVE
BELMONT, NC 28012

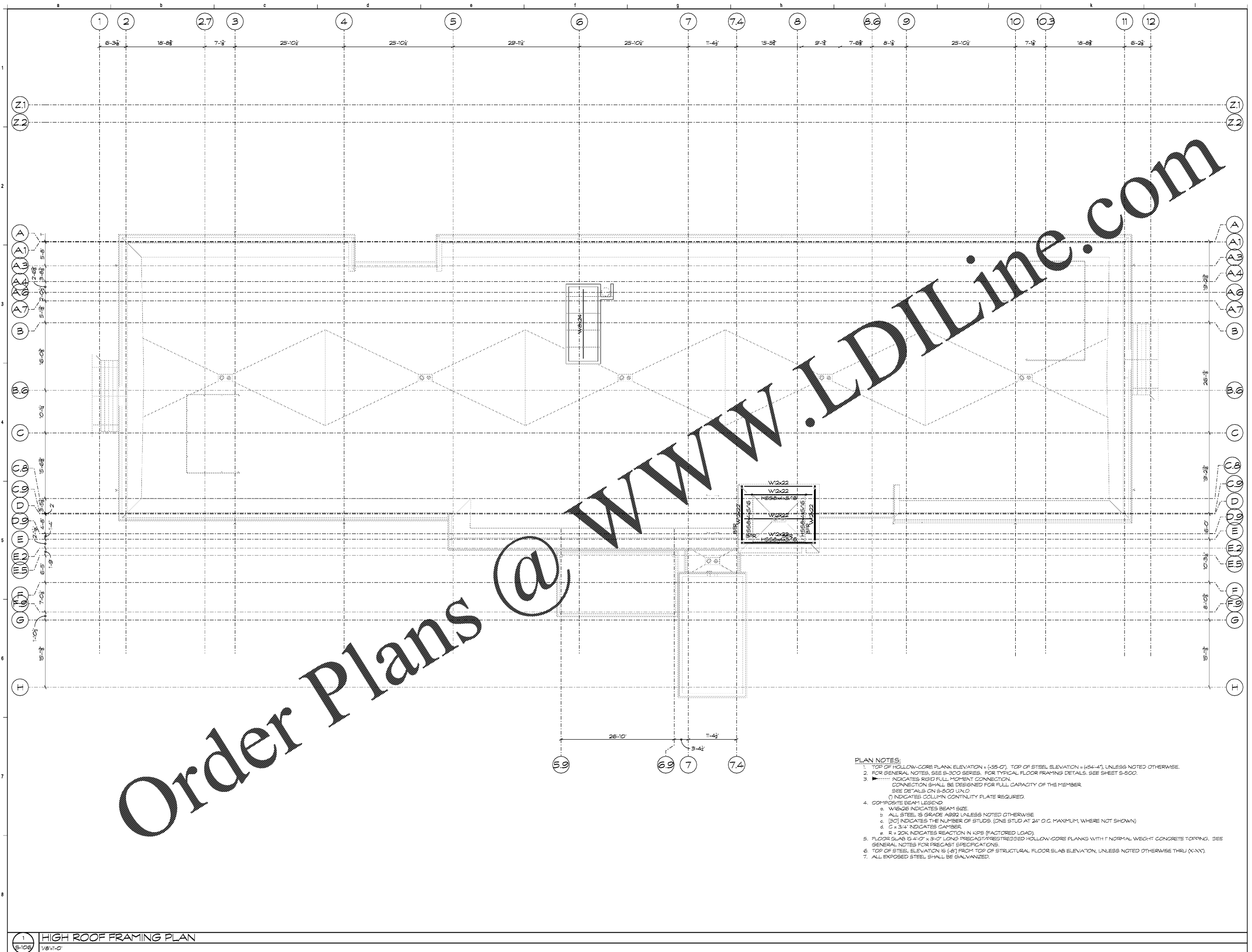
KEY PLAN

Revisions		
#	Date	Description

Project Number: 18021
Issue Date: CONSTRUCTION 06/01/19

DRAWING TITLE
**HIGH ROOF
FRAMING PLAN**

SHEET NUMBER
S-106



Order Plans @

- PLAN NOTES:**
- TOP OF HOLLOW-CORE PLANK ELEVATION = (+55'-0"), TOP OF STEEL ELEVATION = (+54'-4"), UNLESS NOTED OTHERWISE.
 - FOR GENERAL NOTES, SEE S-300 SERIES. FOR TYPICAL FLOOR FRAMING DETAILS, SEE SHEET S-500.
 - INDICATES RIGID FULL MOMENT CONNECTION. CONNECTION SHALL BE DESIGNED FOR FULL CAPACITY OF THE MEMBER. SEE DETAILS ON S-500 UNO. (I) INDICATES COLUMN CONTINUITY PLATE REQUIRED.
 - COMPOSITE BEAM LEGEND:
 - W16x26 INDICATES BEAM SIZE.
 - ALL STEEL IS GRADE A992 UNLESS NOTED OTHERWISE.
 - (3C) INDICATES THE NUMBER OF STUDS (ONE STUD AT 24" O.C. MAXIMUM, WHERE NOT SHOWN).
 - C = 3/4" INDICATES CAMBER.
 - R = 20K INDICATES REACTION IN KIPS (FACTORED LOAD).
 - FLOOR SLAB IS 4'-0" x 3'-0" LONG PRECAST/PRESTRESSED HOLLOW-CORE PLANKS WITH 1" NORMAL WEIGHT CONCRETE TOPPING. SEE GENERAL NOTES FOR PRECAST SPECIFICATIONS.
 - TOP OF STEEL ELEVATION IS (+54') FROM TOP OF STRUCTURAL FLOOR SLAB ELEVATION, UNLESS NOTED OTHERWISE THRU (X-X').
 - ALL EXPOSED STEEL SHALL BE GALVANIZED.

1 HIGH ROOF FRAMING PLAN
S-106 V8 11-0