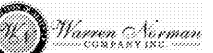
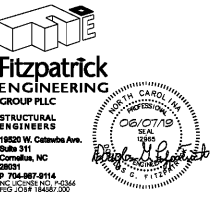




Ragone Architecture & Design, PLLC  
145A Scalespark Road, Charlotte, NC 28208  
T: 704.372.0118 www.rad-arch.com



**HOME 2  
SUITES  
BELMONT**  
HAWLEY AVE  
BELMONT, NC 28012

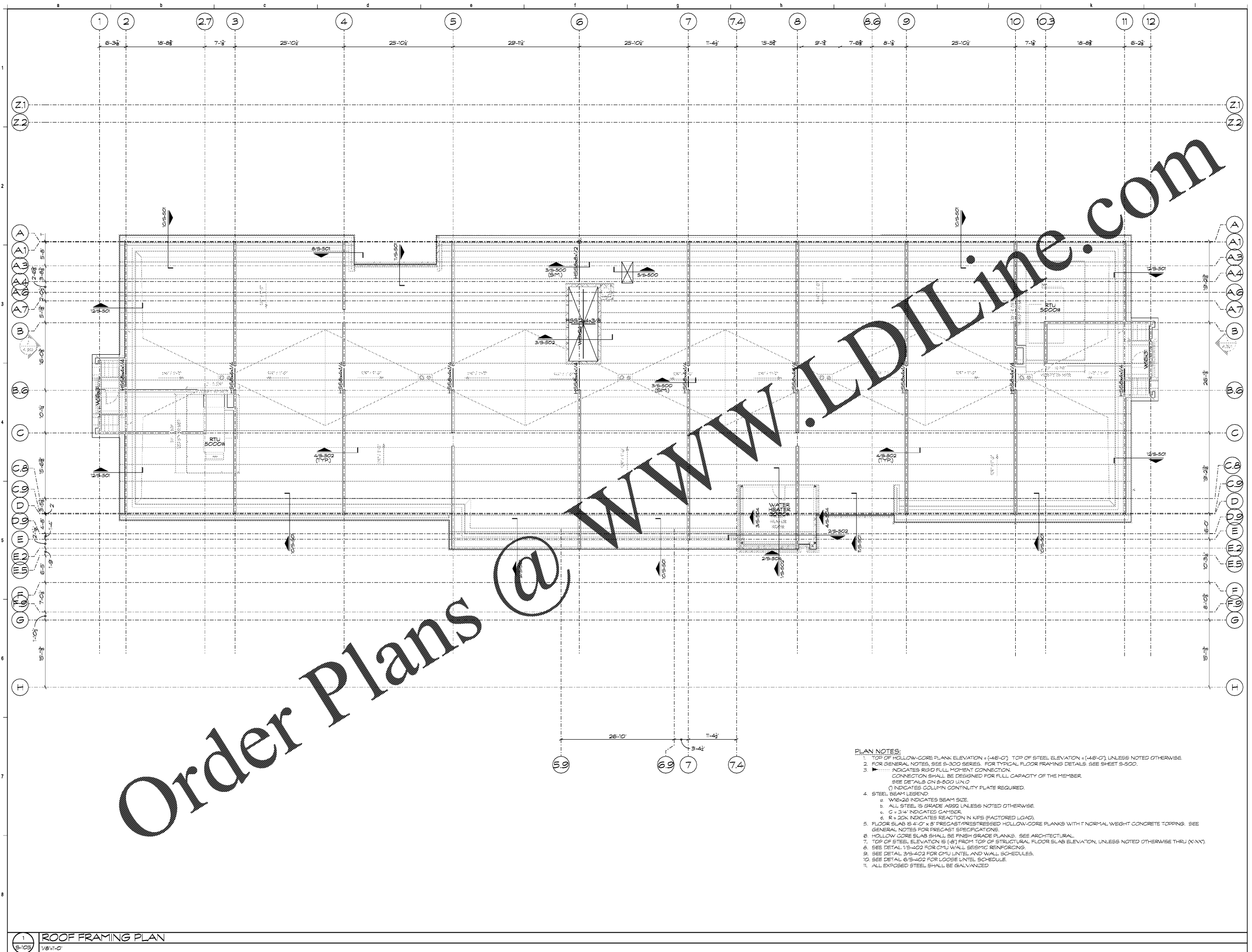
KEY PLAN

Revisions		
#	Date	Description

Project Number: 18021  
Issued for: CONSTRUCTION  
Issue Date: 06/01/19

DRAWING TITLE  
**ROOF FRAMING  
PLAN**

SHEET NUMBER  
**S-105**



Order Plans @

- PLAN NOTES:**
- TOP OF HOLLOW-CORE PLANK ELEVATION = (+46'-0") TOP OF STEEL ELEVATION = (+46'-0") UNLESS NOTED OTHERWISE.
  - FOR GENERAL NOTES, SEE S-300 SERIES. FOR TYPICAL FLOOR FRAMING DETAILS, SEE SHEET S-300.
  - INDICATES RIGID FULL MOMENT CONNECTION. CONNECTION SHALL BE DESIGNED FOR FULL CAPACITY OF THE MEMBER. SEE DETAILS ON S-300 UN.D
  - INDICATES COLUMN CONTINUITY PLATE REQUIRED.
  - STEEL BEAM LEGEND:
    - a. W16x28 INDICATES BEAM SIZE.
    - b. ALL STEEL IS GRADE A500 UNLESS NOTED OTHERWISE.
    - c. C = 3/4" INDICATED CAMBER.
    - d. R = 20K INDICATES REACTION IN KIPS (FACTORED LOAD).
  - FLOOR SLAB IS 4'-0" x 8" PRECAST/PRESTRESSED HOLLOW-CORE PLANKS WITH 1" NORMAL WEIGHT CONCRETE TOPPING. SEE GENERAL NOTES FOR PRECAST SPECIFICATIONS.
  - HOLLOW CORE SLAB SHALL BE FINISH GRADE PLANKS. SEE ARCHITECTURAL.
  - TOP OF STEEL ELEVATION IS (+49') FROM TOP OF STRUCTURAL FLOOR SLAB ELEVATION, UNLESS NOTED OTHERWISE THRU (X-N-X).
  - SEE DETAIL 1/8-402 FOR CMU WALL SEISMIC REINFORCING.
  - SEE DETAIL 3/8-402 FOR CMU LINTEL AND WALL SCHEDULES.
  - SEE DETAIL 6/8-402 FOR LOOSE LINTEL SCHEDULE.
  - ALL EXPOSED STEEL SHALL BE GALVANIZED.

1 ROOF FRAMING PLAN  
1/8" = 1'-0"