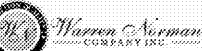
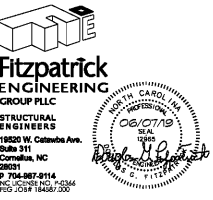


Order Plans @ www.LDILine.com



Ragone Architecture & Design, PLLC
145A Sycamore Road, Charlotte, NC 28208
T: 704.372.0118 www.rad-arch.com



HOME 2 SUITES BELMONT
HAWLEY AVE
BELMONT, NC 28012

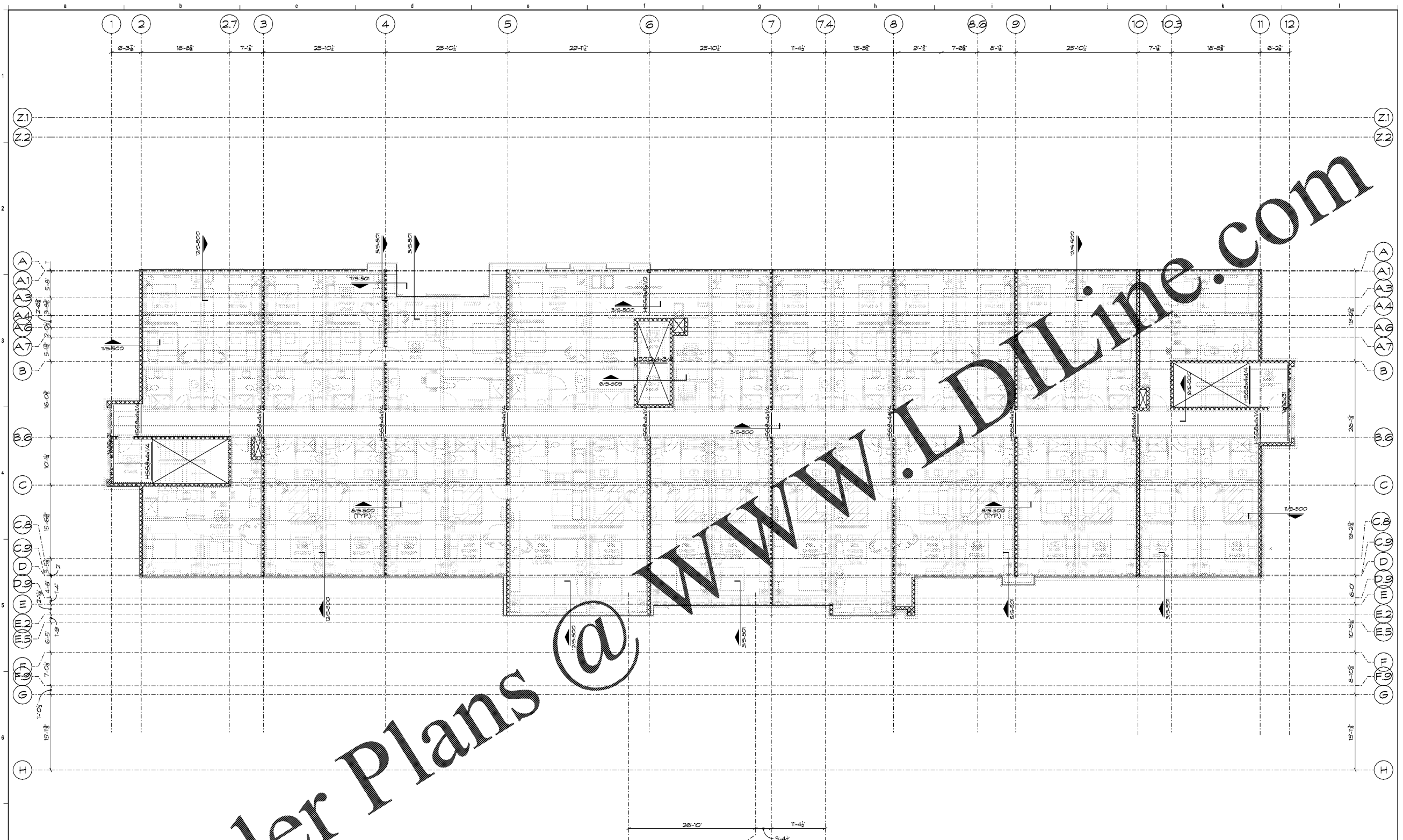
KEY PLAN

Revisions		
#	Date	Description

Project Number: 18021
Issue Date: CONSTRUCTION 06/01/19

DRAWING TITLE
FOURTH FLOOR FRAMING PLAN

SHEET NUMBER
S-104



- PLAN NOTES:**
- TOP OF HOLLOW-CORE PLANK ELEVATION = (+35'-3"), TOP OF STEEL ELEVATION = (+34'-7"), UNLESS NOTED OTHERWISE.
 - FOR GENERAL NOTES, SEE 3-300 SERIES. FOR TYPICAL FLOOR FRAMING DETAILS, SEE SHEET 3-500.
 - STEEL BEAM LEGEND:
 - a. W16x26 INDICATES BEAM SIZE.
 - b. ALL STEEL IS GRADE A992 UNLESS NOTED OTHERWISE.
 - c. C 1 3/4" INDICATES CAMBER.
 - d. R = 20K INDICATES REACTION IN KIPS (FACTORED LOAD).
 - FLOOR SLAB IS 4'-0" x 8' PRECAST/PRESTRESSED HOLLOW-CORE PLANKS WITH 1" NORMAL WEIGHT CONCRETE TOPPING. SEE GENERAL NOTES FOR PRECAST SPECIFICATIONS.
 - HOLLOW CORE SLAB SHALL BE FINISH GRADE PLANKS. SEE ARCHITECTURAL.
 - TOP OF STEEL ELEVATION IS (-8') FROM TOP OF STRUCTURAL FLOOR SLAB ELEVATION, UNLESS NOTED OTHERWISE THRU (X-XX).
 - SEE DETAIL 1D-402 FOR CMU WALL SEISMIC REINFORCING.
 - SEE DETAIL 3/3-402 FOR CMU LINTEL AND WALL SCHEDULES.
 - SEE DETAIL 6/3-402 FOR LOOSE LINTEL SCHEDULE.

1 FOURTH FLOOR FRAMING PLAN
1/8"=1'-0"