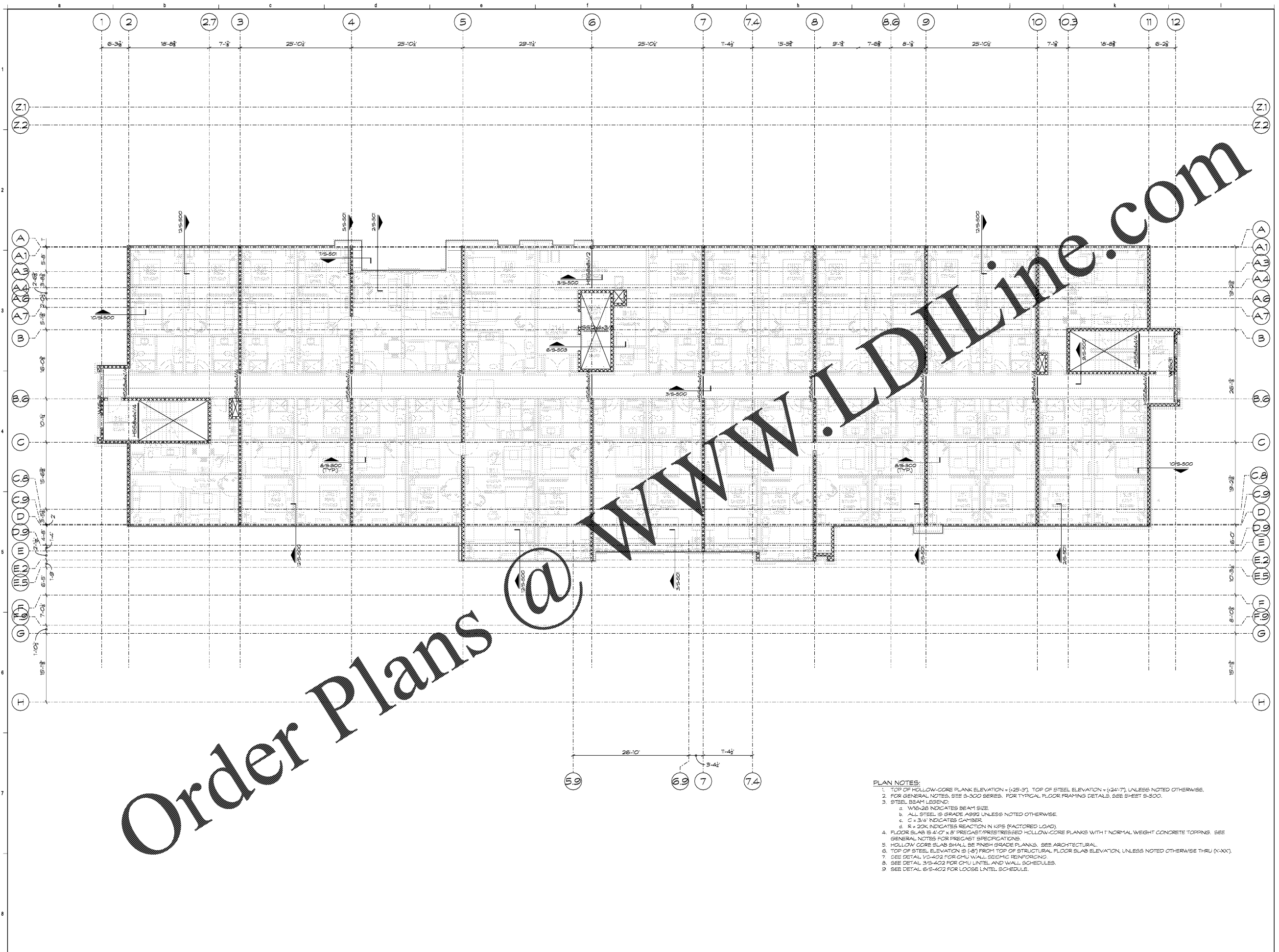


Order Plans @ www.LDILine.com



- PLAN NOTES:**
- TOP OF HOLLOW-CORE PLANK ELEVATION = (+25'-5"), TOP OF STEEL ELEVATION = (+24'-7"), UNLESS NOTED OTHERWISE.
 - FOR GENERAL NOTES, SEE 3-300 SERIES. FOR TYPICAL FLOOR FRAMING DETAILS, SEE SHEET 3-500.
 - STEEL BEAM LEGEND:
 - a. W16x26 INDICATES BEAM SIZE.
 - b. ALL STEEL IS GRADE A992 UNLESS NOTED OTHERWISE.
 - c. C 3x4 INDICATES GIRDER.
 - d. R = 20K INDICATES REACTION IN KIPS (FACTORED LOAD).
 - FLOOR SLAB IS 4'-0" x 8' PRECAST/PRESTRESSED HOLLOW-CORE PLANKS WITH 1" NORMAL WEIGHT CONCRETE TOPPING. SEE GENERAL NOTES FOR PRECAST SPECIFICATIONS.
 - HOLLOW CORE SLAB SHALL BE FINISH GRADE PLANKS. SEE ARCHITECTURAL.
 - TOP OF STEEL ELEVATION IS (-8') FROM TOP OF STRUCTURAL FLOOR SLAB ELEVATION, UNLESS NOTED OTHERWISE THRU (X-XX).
 - SEE DETAIL 1D-402 FOR CMU WALL SEISMIC REINFORCING.
 - SEE DETAIL 3B-402 FOR CMU LINTEL AND WALL SCHEDULES.
 - SEE DETAIL 6B-402 FOR LOOSE LINTEL SCHEDULE.

RAD
 Ragone Architecture & Design, PLLC
 145A Sycamore Road, Charlotte, NC 28209
 T: 704.372.0118 www.rad-arch.com

Fitzpatrick ENGINEERING GROUP PLLC
 STRUCTURAL ENGINEERS
 1820 W. Colmahe Ave., Suite 311, Concord, NC 28027
 P: 704.887.8114
 REG. NO. 35012-0001
 REG. EXP. 12/31/2024

Warren & Norman COMPANY INC.

STRAND HOSPITALITY SERVICES
 Hotel Management, Consulting & Advisory Services

HOME 2 SUITES BY HILTON

HOME 2 SUITES BELMONT
 HAWLEY AVE
 BELMONT, NC 28012

KEY PLAN

Revisions		
#	Date	Description

Project Number: 18021
 Issued for: CONSTRUCTION
 Issue Date: 06/01/19

DRAWING TITLE
THIRD FLOOR FRAMING PLAN

SHEET NUMBER
S-103