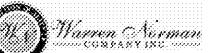
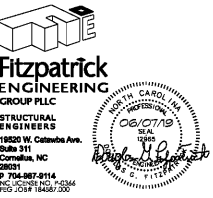




Ragone Architecture & Design, PLLC
145A Sycamore Road, Charlotte, NC 28209
T: 704.372.0118 www.rad-arch.com



**HOME 2
SUITES
BELMONT**
HAWLEY AVE
BELMONT, NC 28012

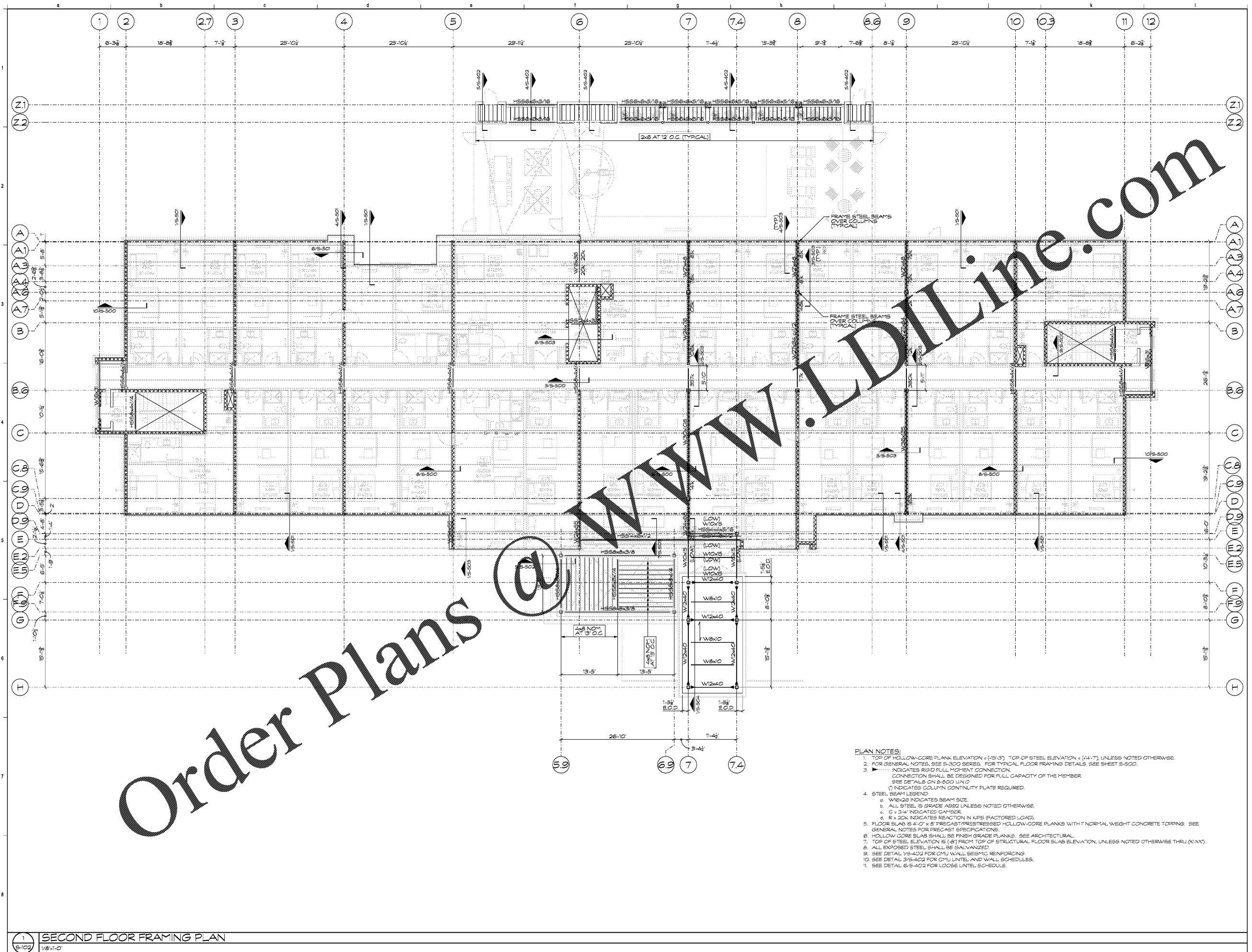
KEY PLAN

Revisions		
#	Date	Description

Project Number: 18021
Issued for: CONSTRUCTION
Issue Date: 06/01/19

DRAWING TITLE
**SECOND FLOOR
FRAMING PLAN**

SHEET NUMBER
S-102



- PLAN NOTES:**
- TOP OF HOLLOW-CORE PLANK ELEVATION = (+5'-3") TOP OF STEEL ELEVATION = (+4'-7") UNLESS NOTED OTHERWISE.
 - FOR GENERAL NOTES, SEE S-300 SERIES. FOR TYPICAL FLOOR FRAMING DETAILS, SEE SHEET S-500.
 - INDICATES RIGID FULL MOMENT CONNECTION. CONNECTION SHALL BE DESIGNED FOR FULL CAPACITY OF THE MEMBER. SEE DETAILS ON S-500 UN.D
 - INDICATES COLUMN CONTINUITY PLATE REQUIRED.
 - STEEL BEAM LEGEND:
 - a. W6x8 INDICATES BEAM SIZE.
 - b. ALL STEEL IS GRADE A500 UNLESS NOTED OTHERWISE.
 - c. C = 3/4" INDICATED CAMBER.
 - d. B+30K INDICATES REACTION IN KIPS (FACTORED LOAD).
 - FLOOR SLAB IS 4'-0" x 8' PRECAST/PRESTRESSED HOLLOW-CORE PLANKS WITH 1" NORMAL WEIGHT CONCRETE TOPPING. SEE GENERAL NOTES FOR PRECAST SPECIFICATIONS.
 - HOLLOW CORE SLAB SHALL BE FINISH GRADE PLANKS. SEE ARCHITECTURAL.
 - TOP OF STEEL ELEVATION IS (+4') RIGHT TOP OF STRUCTURAL FLOOR SLAB ELEVATION, UNLESS NOTED OTHERWISE THRU (X-X).
 - ALL EXPOSED STEEL SHALL BE GALVANIZED.
 - SEE DETAIL S-5-402 FOR CMU WALL SEISMIC REINFORCING.
 - SEE DETAIL S-5-403 FOR CMU LINTEL AND WALL SCHEDULES.
 - SEE DETAIL S-5-402 FOR LOOSE LINTEL SCHEDULES.

Order Plans @ WWW.IDLINE.COM

1 SECOND FLOOR FRAMING PLAN
1/8" = 1'-0"