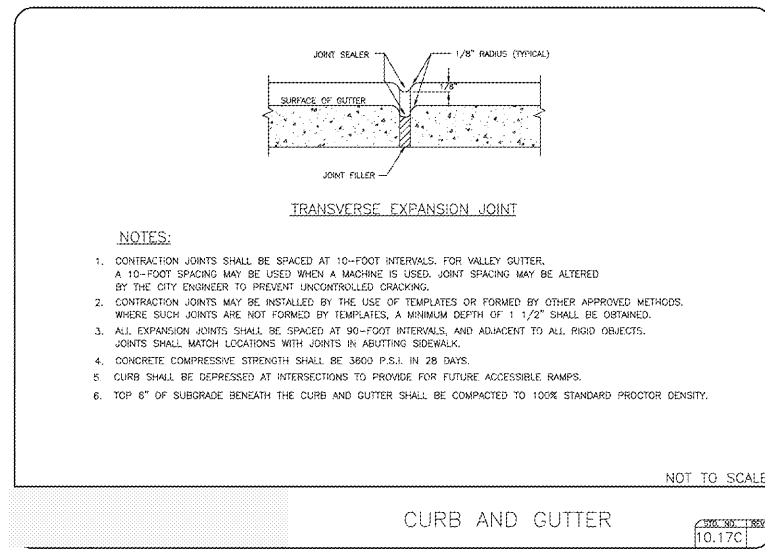


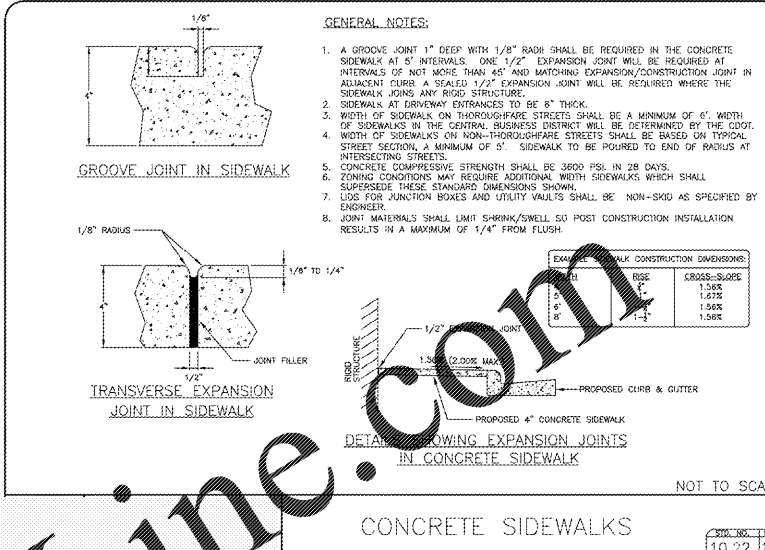
STANDARD CURB AND GUTTER

10.17A



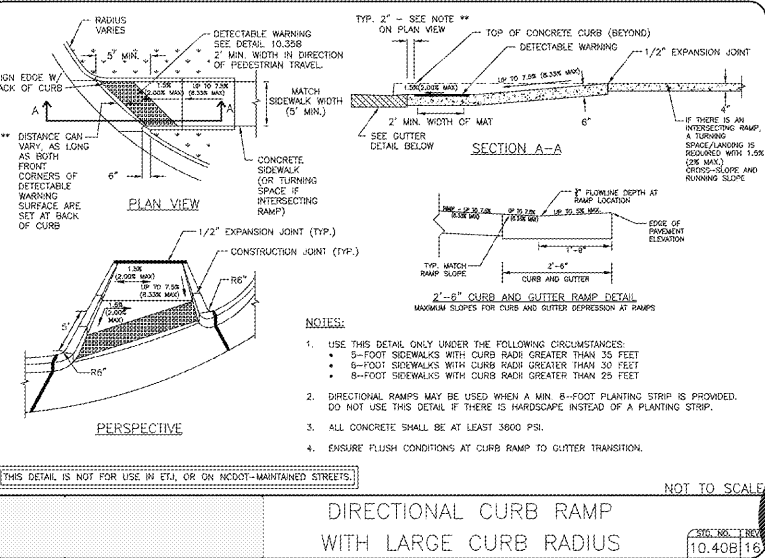
CURB AND GUTTER

10.17C



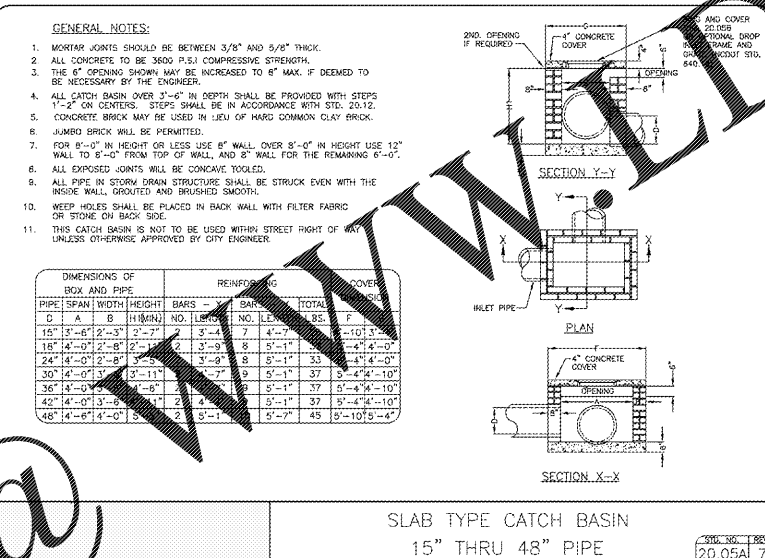
CONCRETE SIDEWALKS

10.22 15



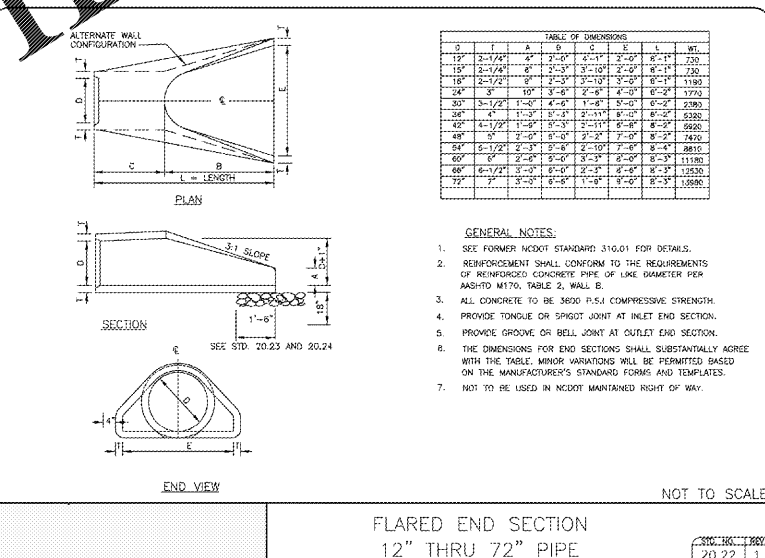
DIRECTIONAL CURB RAMP WITH LARGE CURB RADIUS

10.40B 16



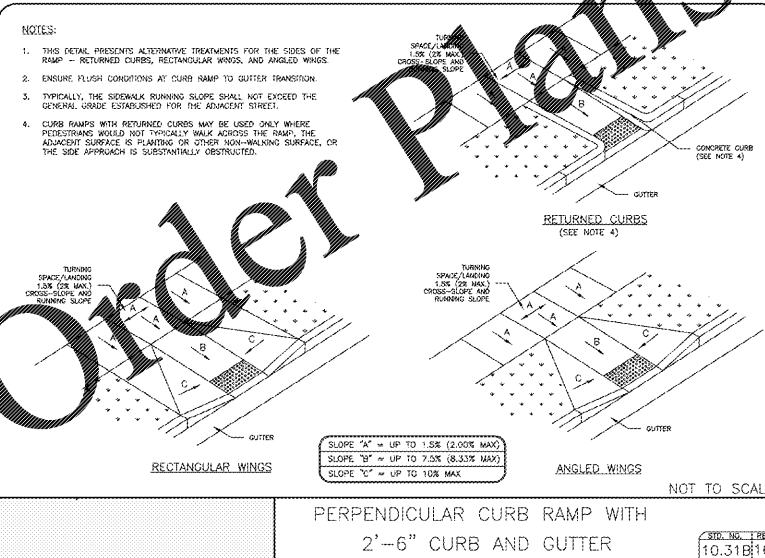
SLAB TYPE CATCH BASIN 15\"/>

20.05A 7



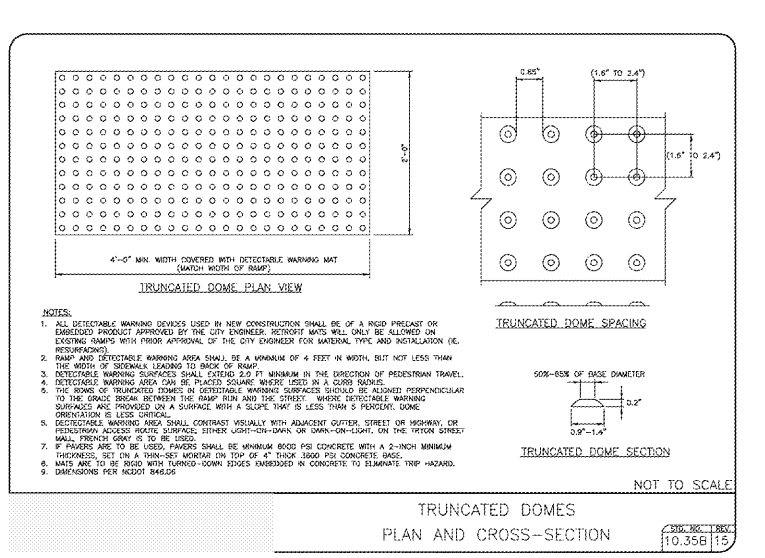
FLARED END SECTION 12\"/>

20.22 1



PERPENDICULAR CURB RAMP WITH 2'-6\"/>

10.31B 15



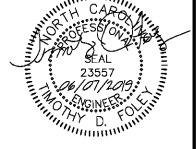
TRUNCATED DOMES PLAN AND CROSS-SECTION

10.35B 15

NOTES:
 1. CONTRACTOR IS FULLY RESPONSIBLE FOR COORDINATING ALL UTILITIES AND ASSURING THAT ALL UTILITIES ARE LOCATED PRIOR TO BEGINNING CONSTRUCTION.
 2. CONTRACTOR IS RESPONSIBLE FOR PLACING BARRIERS AND USING FLAGMEN, ETC., AS NECESSARY TO INSURE SAFETY TO THE PUBLIC.
 3. ALL PAVEMENT CUTS, CONCRETE OR ASPHALT, ARE TO BE REPLACED ACCORDING TO STANDARDS OF THE NORTH CAROLINA DEPARTMENT OF TRANSPORTATION.
 4. SHORING WILL BE ACCORDING TO OSHA TRENCHING STANDARDS PART 1926 SUBPART P, OR AS AMENDED.

NOTES:
 1. ALL DETECTABLE WARNING DEVICES USED IN NEW CONSTRUCTION SHALL BE OF A RECID PRECAST OR EMBEDDED PRODUCT APPROVED BY THE CITY ENGINEER. RECYCLED MATS WILL ONLY BE ALLOWED ON EXISTING RAMP WITH PRIOR APPROVAL OF THE CITY ENGINEER FOR MATERIAL TYPE AND INSTALLATION (IE. REINFORCED).
 2. RAMP AND DETECTABLE WARNING AREA SHALL BE A MINIMUM OF 4 FEET IN WIDTH, BUT NOT LESS THAN THE WIDTH OF SIDEWALK LEADING TO BACK OF RAMP.
 3. DETECTABLE WARNING DEVICES SHALL BE PLACED 2.0 FT MINIMUM IN THE DIRECTION OF PEDESTRIAN TRAVEL.
 4. DETECTABLE WARNING AREA CAN BE PLACED SQUARE WHERE USED IN A CURB RADIUS.
 5. THE SPACING OF TRUNCATED DOMES IN DETECTABLE WARNING SURFACES SHALL BE ALIGNED PERPENDICULAR TO THE GRADE BREAK BETWEEN THE RAMP RISE AND THE STREET. WHERE DETECTABLE WARNING SURFACES ARE PROVIDED ON A SURFACE WITH A SLOPE THAT IS LESS THAN 5 PERCENT, DOME ORIENTATION IS LESS CRITICAL.
 6. DETECTABLE WARNING AREA SHALL CONTRAST VISUALLY WITH ADJACENT GUTTER, STREET OR HIGHWAY, OR PEDESTRIAN ACCESSIBLE SURFACE, EITHER LIGHT-ON-DOWN OR DOWN-ON-LIGHT, ON THE TRIPON STREET WALL, PRIOR TO BE USED.
 7. IF FLOWERS ARE TO BE USED, FLOWERS SHALL BE MINIMUM 6000 PSI CONCRETE WITH A 2-INCH MINIMUM THICKNESS, SET IN A 2-INCH-DEEP MORTAR ON TOP OF A 4-INCH 3000 PSI CONCRETE BASE.
 8. MATS ARE TO BE RECID WITH TURNED-DOWN SIDES EMBEDDED IN CONCRETE TO ELIMINATE TRIP HAZARD.
 9. DIMENSIONS PER NCOT 304.03.

HensonFoley
 Landscape Architecture | Civil Engineering | Surveying
 8712 Linholm Dr. Suite 202A, Huntersville, NC 28078
 P: 704.875.1615 | F: 704.875.0959 | www.hensonfoley.com
 NC LANDSCAPE ARCHITECTURE BOARD LICENSE # C-218
 NC ENGINEERING BOARD LICENSE # E-1369
 NC SURVEYING BOARD LICENSE # S-1369



HOME2 SUITES BELMONT
 3595444233, 3595444234, 3595444234, 3595441343, 3595440335
 HAWLEY AVE, BELMONT, NORTH CAROLINA 28012

REVISIONS:

NO.	DATE	DESCRIPTION
1	03/12/2019	ISSUE FOR BID 2019-06-07

C10 - DETAILS.DWG
 PROJECT NUMBER: 217090
 DATE: 03/12/2019 DRAWN BY: JDC
C11 OF **15**

Order Plans

UNAWARDED ONLINE

CALL ULOCO BEFORE YOU DIG
 1-800-432-4949
 AVOID UTILITY DAMAGE