

GENERAL SITE UTILITY NOTES:

1. ALL PIPE LENGTHS ARE HORIZONTAL DISTANCE AND ARE APPROXIMATE.
2. CONTRACTOR SHALL PROVIDE ALL THE MATERIALS AND APPURTENANCES NECESSARY FOR THE COMPLETE INSTALLATION OF THE UTILITIES. ALL PIPES AND FITTINGS SHALL BE INSPECTED BY THE BUILDING INSPECTOR PRIOR TO BEING COVERED.
3. ALL WORK SHALL COMPLY WITH ALL APPLICABLE CODES, REGULATIONS, AND/OR LOCAL STANDARDS IMPOSED BY LOCAL UTILITY.
4. ALL WATER LINES SHALL HAVE A MINIMUM COVER OF 36" ABOVE TOP OF PIPE.
5. CONTRACTOR SHALL ADJUST LOCATION OF PROPOSED WATER LINES AS REQUIRED TO AVOID CONFLICTS WITH STORM SEWER OR OTHER UTILITIES.
6. CLEANOUTS ARE TO BE SPACED FOR A MAXIMUM OF 75 FEET ON 4" LINES AND 100 FEET ON 6" LINES.
7. LOCATION, SIZE AND INVERT ELEVATIONS OF SANITARY SEWER SHALL BE COORDINATE WITH THE APPROVED PLUMBING PLANS FOR THE BUILDING.
8. THRUST BLOCKS ARE REQUIRED AT EACH FIRE HYDRANT, TEE, BLOWOFF, AND ELBOW.
9. GENERAL CONTRACTOR SHALL INSTALL UTILITIES TO WITHIN 5' OF BUILDING. PLUMBING CONTRACTOR SHALL BE RESPONSIBLE FOR UTILITIES IN THE BUILDING AND WITHIN 5' OF THE BUILDING.
10. INSTALLATION AND REPAIR OF UNDERGROUND ELECTRICAL, GAS AND TELEPHONE UTILITIES AND DISTURBED AREAS SHALL BE THE RESPONSIBILITY OF THE GENERAL CONTRACTOR OR APPLICABLE UTILITY COMPANY. THE DISTURBED AREAS BENEATH EXISTING ASPHALT SHALL BE RE-COMPACTED TO THE REQUIRED SPECIFICATIONS, AND THE STONE BASE AND ASPHALT BE RETURNED TO ITS ORIGINAL CONDITION.
11. THE GENERAL CONTRACTOR SHALL COORDINATE ALL NEW UTILITY TAP LOCATIONS WITH THE UTILITY DEPARTMENT. FEES SHALL BE THE RESPONSIBILITY OF THE GENERAL CONTRACTOR.
12. THERE SHALL BE NO TAPS, PIPING BRANCHES, UNAPPROVED BYPASS PIPING, HYDRANTS, FIRE DEPT. CONNECTION POINTS, OR OTHER WATER-USING APPURTENANCES CONNECTED TO THE SUPPLY LINE BETWEEN ANY WATER METER AND ITS CITY OF BELMONT REQUIRED BACKFLOW PREVENTER.
13. BACKFLOW PREVENTION ASSEMBLY IS REQUIRED TO BE TESTED BY A CITY OF BELMONT APPROVED CERTIFIED TESTER PRIOR TO PLACING THE WATER SYSTEM IN SERVICE.

GENERAL NOTES:

ALL SEWER SERVICE LINES TO BE SDR35 UNLESS NOTED OTHERWISE
SEWER LINES MUST BE FREE OF TREES AND LANDSCAPE PLANTINGS. UTILITY CONTRACTOR TO COORDINATE WITH LANDSCAPER
ALL UNDERGROUND FACILITIES ARE REQUIRED TO BE ELECTRICALLY LOCATED (WATER LINES, SEWER LINES, WATER SERVICES, AND SEWER LATERALS) USING TRACER WIRE FOR ALL UNDERGROUND UTILITIES

NOTE:

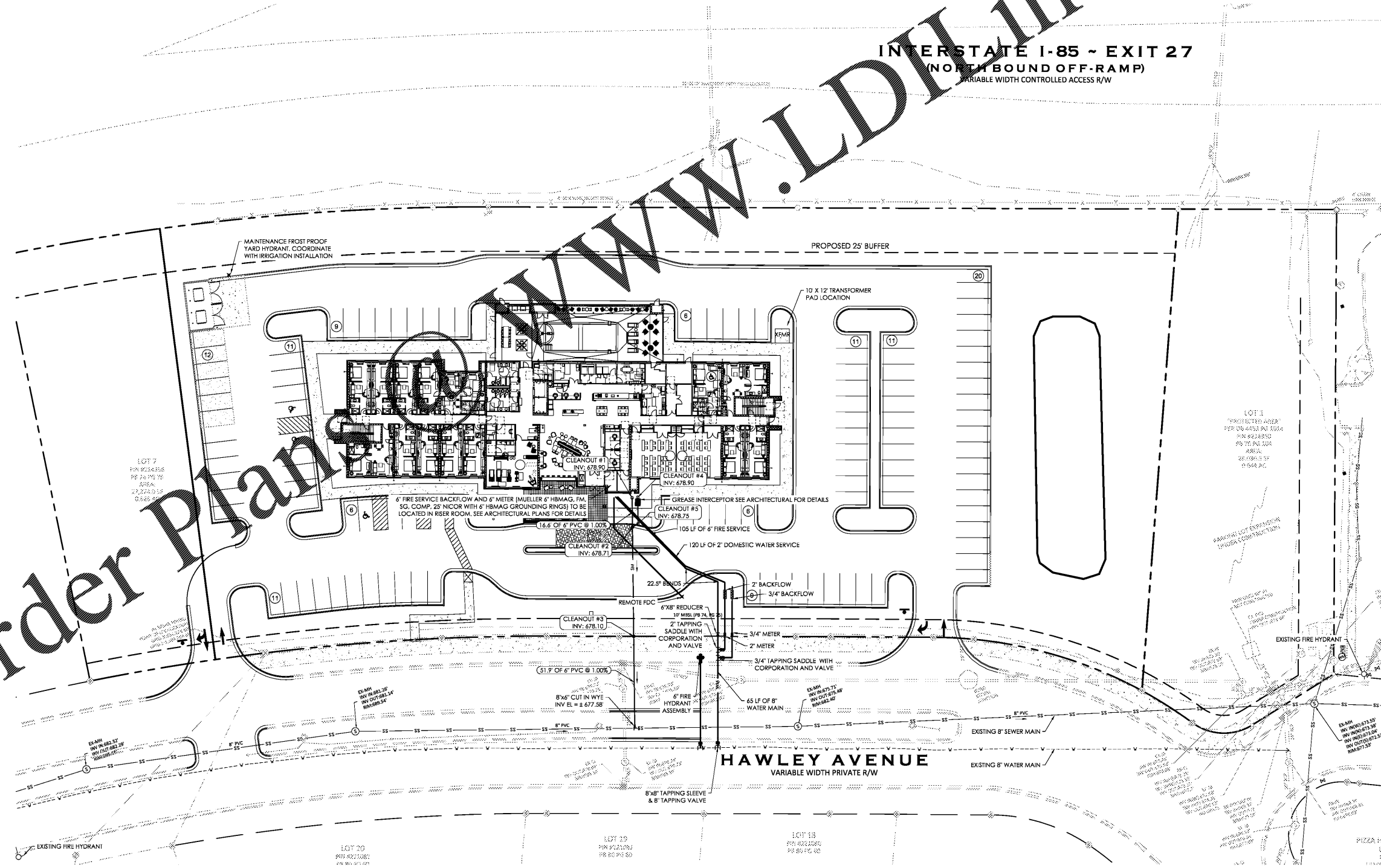
ALL WATER SERVICE CONNECTION PARTS MUST BE FROM THE APPROVED CITY OF BELMONT LIST. NO EXCEPTION

UTILITY NOTES:

1. ALL MATERIALS, EQUIPMENT, LABOR, AND WORKMANSHIP SHALL BE IN ACCORDANCE WITH AND SUBJECT TO BELMONT'S LAND DEVELOPMENT STANDARDS MANUAL, ORDINANCES, POLICIES, AND STANDARD SPECIFICATIONS, AND THE NORTH CAROLINA ADMINISTRATIVE CODE FOR WASTEWATER COLLECTION AND WATER DISTRIBUTION SYSTEMS. IN THE EVENT OF CONFLICT BETWEEN CITY OF BELMONT STANDARD SPECIFICATIONS AND THE NORTH CAROLINA ADMINISTRATIVE CODE, THE MORE RESTRICTIVE REQUIREMENTS SHALL APPLY.
2. REVIEW AND APPROVAL OF THE PLANS DOES NOT RELIEVE THE OWNER, CONTRACTOR, OR DEVELOPER FROM MEETING THE REQUIREMENTS OF CITY OF BELMONT ORDINANCES, POLICIES, AND STANDARD SPECIFICATIONS, (AS APPLICABLE), AND TECHNICAL SPECIFICATIONS, THE STANDARD SPECIFICATION FOR WASTEWATER COLLECTION & WASTE DISTRIBUTION FOR CITY OF BELMONT AND ANY OTHER LOCAL, STATE, AND FEDERAL REGULATIONS & APPROVALS.
3. THE CONTRACTOR MUST CONTACT THE CITY OF BELMONT ENGINEERING CONSTRUCTION MANAGER (704-XXX-XXXX) AND THE INSPECTOR ASSIGNED TO THE PROJECT, AT LEAST 48-HOURS PRIOR TO INITIATING ANY CONSTRUCTION ACTIVITY.
4. THE EXISTING WATER MAIN VALVE RISERS AND STEMS AND THE EXISTING SEWER MAIN MANHOLE RISERS ARE TO BE RAISED OR LOWERED TO FINAL GRADE, AS APPLICABLE, AND AT LEAST 3-FT OF GROUND COVER IS TO BE MAINTAINED OVER THE EXISTING UTILITIES AT ALL TIMES.
5. THE OWNER AND/OR DEVELOPER ARE RESPONSIBLE FOR DETERMINING IF THE WATER PRESSURE AND EXISTING PUBLIC FIRE FLOW WILL BE ADEQUATE FOR THEIR PROPOSED SITE DEVELOPMENT. IF NOT, THE OWNER OR DEVELOPER IS RESPONSIBLE FOR INSTALLING THE NECESSARY AND APPROVED DEVICES TO MAKE ANY ADJUSTMENTS TO THE WATER PRESSURE, AND/OR WATER VOLUME SUPPLIED BY CITY OF BELMONT AND SHALL BE RESPONSIBLE FOR THE MAINTENANCE OF ALL SUCH DEVICES.
6. A MINIMUM OF TEN-HORIZONTAL FEET OF SEPARATION SHALL BE MAINTAINED BETWEEN THE CITY'S WATER LINES AND WASTEWATER LINES.
7. THE CITY'S PUBLIC MAINS SHALL MAINTAIN A MINIMUM FIVE-HORIZONTAL FEET OF SEPARATION FROM ANY TYPES OF MAINTENANCE OBSTRUCTION, INCLUDING BUT NOT LIMITED TO ANY OTHER UTILITY PROVIDER'S LINES OR EQUIPMENT, A MINIMUM VERTICAL SEPARATION OF TWO FEET SHALL BE MAINTAINED BETWEEN ANY TYPE OF MAINTENANCE OBSTRUCTION, INCLUDING BUT NOT LIMITED TO ANY OTHER UTILITY PROVIDER'S LINES OR EQUIPMENT, AND THE CITY WATER DISTRIBUTION LINES, WASTEWATER COLLECTION LINES, AND ASSOCIATED APPURTENANCES, UNLESS AN EXCEPTION IS GRANTED. IF AN EXCEPTION IS GRANTED, A MINIMUM OF ONE VERTICAL FOOT OF SEPARATION MUST BE MAINTAINED BETWEEN THE CITY'S PUBLIC MAINS, THE MAINTENANCE OBSTRUCTION AND THE CITY'S PUBLIC MAINS WITH ASSOCIATED APPURTENANCES SHALL BE LIMITED TO CAST IRON PIPE OR AN APPROVED FERROUS MATERIAL WITH JOINTS THAT ARE EQUIVALENT TO POTABLE WATER JOINTS FOR A DISTANCE OF TEN FEET ON EITHER SIDE OF THE POINT OF CROSSING. GREATER SEPARATION DISTANCES MAY BE REQUIRED AS SPECIFIED BY FEDERAL, STATE, OR LOCAL REGULATIONS.
8. IF A WATER LINE CROSSES UNDER A SEWER LINE, REGARDLESS OF THE WATER MAIN AND THE SEWER LINE SHALL BE CONSTRUCTED OF DUCTILE IRON PIPE OR AN APPROVED FERROUS MATERIAL WITH JOINTS THAT ARE EQUIVALENT TO POTABLE WATER MAIN STANDARDS FOR A DISTANCE OF TEN FEET ON EITHER SIDE OF THE POINT OF CROSSING.
9. THE DEVELOPER SHALL APPLY FOR SEWER SERVICE AND APPLICABLE FEES TO THE CITY. THE CITY WILL TRY TO ACCOMMODATE THE DEPICTED SERVICE LOCATION AND ASSOCIATED COSTS APPROVED PLANS; HOWEVER, FINAL DETERMINATION OF LOCATION OF SERVICE IS AT THE DISCRETION OF THE CITY.
10. CONTRACTOR TO FIELD LOCATE THE VERTICAL AND HORIZONTAL LOCATION OF THE EXISTING PRIVATE WATER LINES PRIOR TO THE INSTALLATION OF THE STORM WATER DRAINAGE SYSTEM PROVISIONS. MAINTAIN AT LEAST 2 VERTICAL FEET BETWEEN THE PROPOSED STORM WATER DRAINAGE SYSTEM AND THE EXISTING PRIVATE WATER SERVICE LINES. IF 2 VERTICAL FEET OF SEPARATION CANNOT BE MAINTAINED, THEN THE ENGINEER SHALL BE NOTIFIED AND THE PLANS WILL NEED TO BE REVISED TO ADDRESS THE CONFLICTS PRIOR TO BEGINNING WITH THE STORM DRAINAGE INSTALLATION.

Order Plans

WWW.LDLINE.COM



INTERSTATE I-85 ~ EXIT 27
(NORTH BOUND OFF-RAMP)
VARIABLE WIDTH CONTROLLED ACCESS R/W

HensonFoley
Landscape Architecture | Civil Engineering | Surveying
8712 Lindholm Dr. Suite 202A, Huntersville, NC 28078
P: 704.875.1415 | F: 704.875.0959 | www.hensonfoley.com
NC LANDSCAPE ARCHITECTURE BOARD LICENSE # C-248
NC ENGINEERING BOARD LICENSE # E-15361
NC SURVEYING BOARD LICENSE # S-15361

NORTH ARROW
GRAPHIC SCALE 1"=30 FT.
Professional Engineer Seal for Timothy D. Henson, License # 23517, State of North Carolina.

HOME2 SUITES BELMONT
3595445139, 3595444233, 3595443246, 3595442340, 3595441343, 3595440335
HAWLEY AVE, BELMONT, NORTH CAROLINA 28012
UTILITY PLAN

REVISIONS:

REV 1	ISSUE FOR BID 2019-06-07

C08 - UTILITY.DWG
PROJECT NUMBER: 217090
DATE: 03/12/2019
DRAWN BY: JDC
C08 OF 15
SHEET

CALL ULOC BEFORE YOU DIG
CONTRACTOR IS FULLY RESPONSIBLE FOR CONTACTING APPROPRIATE PARTIES AND ASSURING THAT EXISTING UTILITIES ARE LOCATED PRIOR TO BEGINNING CONSTRUCTION. CONTRACTOR IS RESPONSIBLE FOR PLACING BARRICADES USING FLAGMEN, ETC., AS NECESSARY TO INSURE SAFETY TO THE PUBLIC. ALL PAVEMENT CUTS, CONCRETE OR ASPHALT, ARE TO BE REPLACED ACCORDING TO STANDARDS OF THE NORTH CAROLINA DEPARTMENT OF TRANSPORTATION. SHORING WILL BE ACCORDING TO OSHA TRENCHING STANDARDS PART 1926 SUBPART P, OR AS AMENDED.

1-800-432-4949
AVOID UTILITY DAMAGE