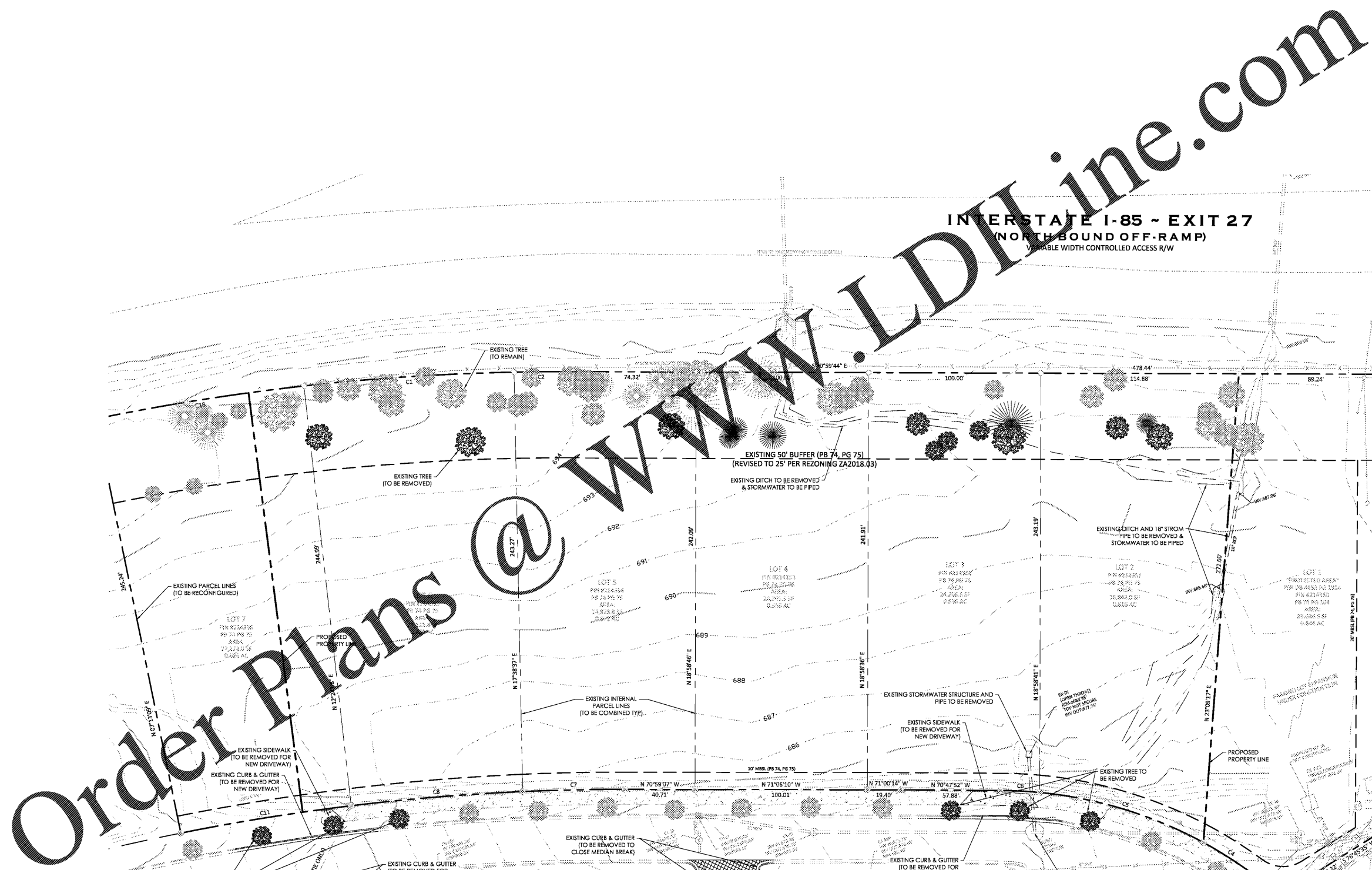


HOME2 SUITES BELMONT
 3595445139, 3595444233, 3595443246, 3595442340, 3595441343, 3595440335
 HAWLEY AVE, BELMONT, NORTH CAROLINA 28012

SURVEY - DEMOLITION

REVISIONS:

REVI - ISSUE FOR BID 2019-06-07



- CALL ULOCO BEFORE YOU DIG
-
- CONTRACTOR IS FULLY RESPONSIBLE FOR CONTACTING APPROPRIATE PARTIES AND ASSURING THAT EXISTING UTILITIES ARE LOCATED PRIOR TO BEGINNING CONSTRUCTION.
 - CONTRACTOR IS RESPONSIBLE FOR PLACING BARRICADES USING FLAGMEN, ETC., AS NECESSARY TO INSURE SAFETY TO THE PUBLIC.
 - ALL PAVEMENT CUTS, CONCRETE OR ASPHALT, ARE TO BE REPLACED ACCORDING TO STANDARDS OF THE NORTH CAROLINA DEPARTMENT OF TRANSPORTATION.
 - SHORING WILL BE ACCORDING TO OSHA TRENCHING STANDARDS PART 1926 SUBPART P, OR AS AMENDED.
- 1-800-432-4949
 AVOID UTILITY DAMAGE