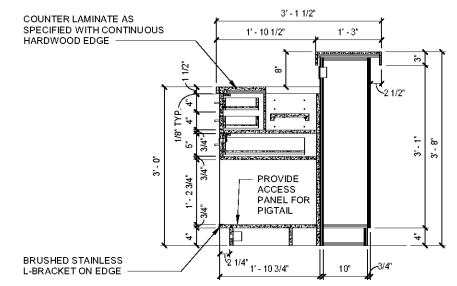


Revisions		
#	Date	Description

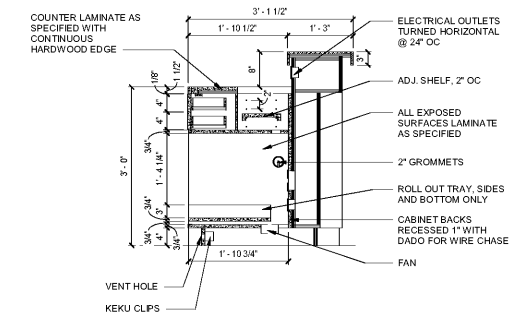
Project Number: 18021
Issued for: CONSTRUCTION
Issue Date: 2019-06-07

DRAWING TITLE
**CASEWORK -
FRONT DESK**

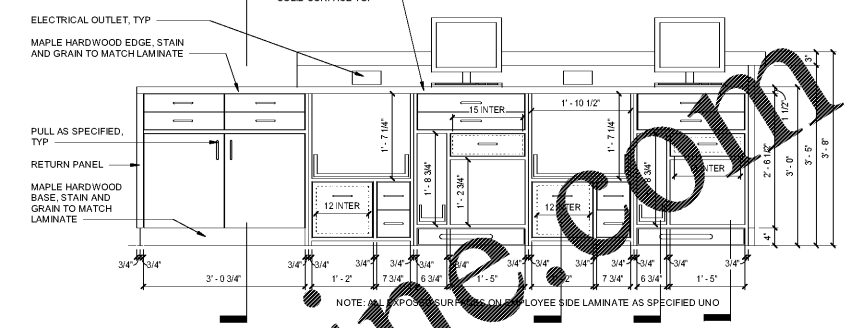
SHEET NUMBER
ID.474



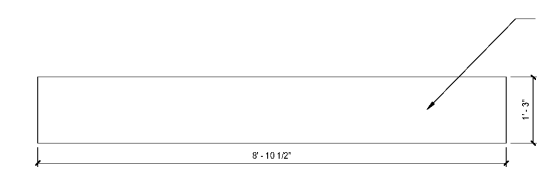
7K SECTION
SCALE: 3/4" = 1'-0"



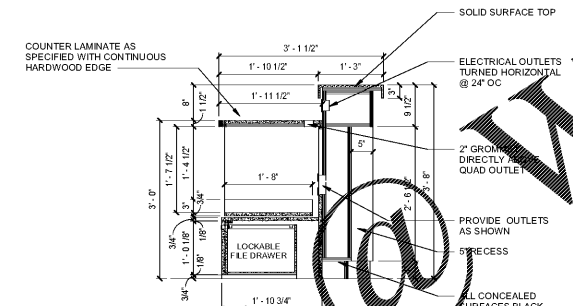
10K SECTION
SCALE: 3/4" = 1'-0"



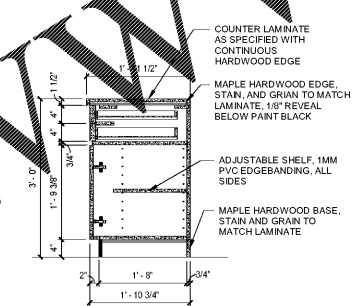
13K ELEVATION
SCALE: 3/4" = 1'-0"



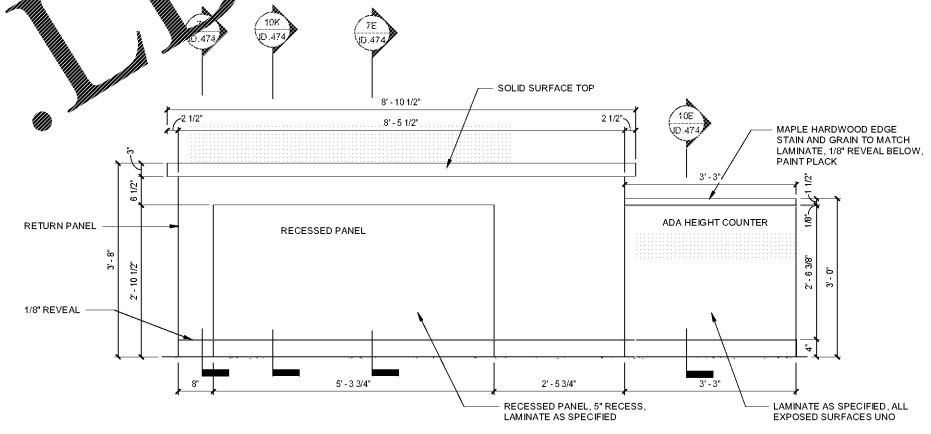
1E PLAN - UPPER COUNTER
SCALE: 3/4" = 1'-0"



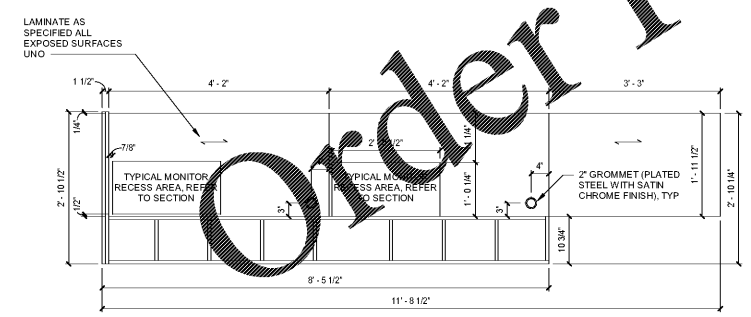
7E SECTION
SCALE: 3/4" = 1'-0"



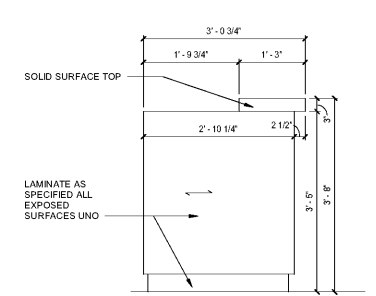
10E SECTION
SCALE: 3/4" = 1'-0"



13E ELEVATION
SCALE: 3/4" = 1'-0"

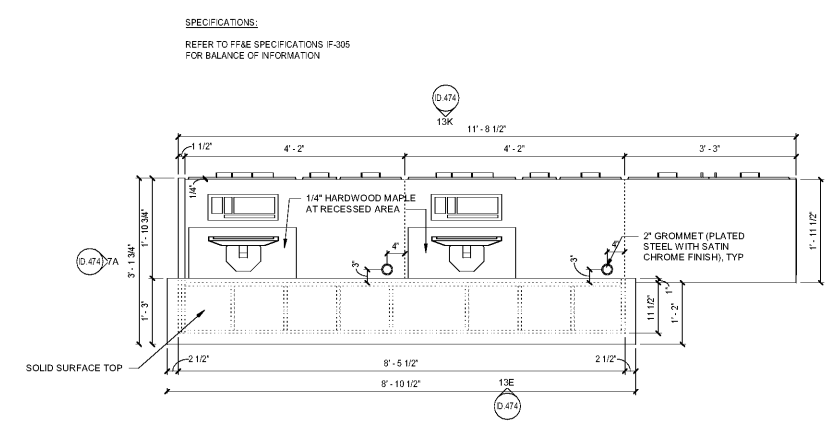


1A PLAN - LOWER COUNTER
SCALE: 3/4" = 1'-0"



7A ELEVATION
SCALE: 3/4" = 1'-0"

- NOTES:
1. ALL TRASH RECEPTACLES, COMPUTER EQUIPMENT AND ELECTRICAL CONNECTIONS BY OTHERS
 2. ALL EXPOSED CABINET SURFACES LAMINATE AS SPECIFIED, CONCEALED ARE BLACK MELAMINE
 3. ALL DOORS AND DRAWERS HAVE LOCKS KEYS ALIKE - EXCEPT ALL CASH DRAWERS KEYS DIFFERENTLY
 4. ELECTRICAL IS RUN IN WALL CAVITY, PROVIDE ACCESS. EACH UNIT TO EASILY SLIDE INTO PLACE AFTER CONNECTIONS
 5. PROVIDE PIGTAIL FOR FINAL ELECTRICAL HOOKUP. VERIFY LOCATION
 6. DRAWER CONSTRUCTION
 7. LOCKED CASH DRAWERS - 15" CLEAR ON INSIDE
 8. LOCKED FILE DRAWERS - 12" CLEAR ON INSIDE
 9. ACC TO PROVIDE ALL ELECTRICAL DEVICES AND COORDINATE FINAL HOOKUP WITH GC
 10. MC CABLE TO BE 8" EXCESS, FOR FIELD USE.



13A PLAN - FRONT DESK
SCALE: 3/4" = 1'-0"