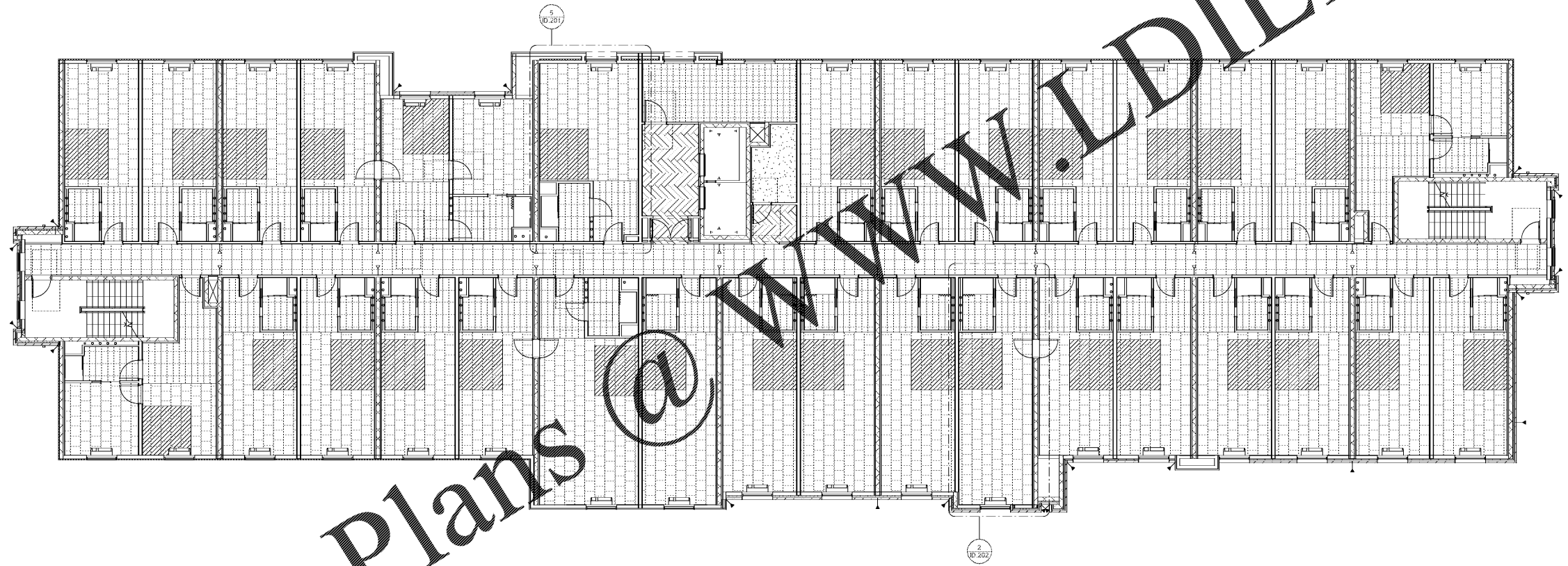


- FINISH PLAN NOTES:**
- SEE FINISH LEGEND ON ID.003 FOR MORE INFORMATION.
  - SEE ENLARGED GUESTROOM PLANS ON A.601 - A.607 AND ENLARGED GUESTROOM RESTROOMS ON A.620 FOR FINISHES.
  - SEE INTERIOR DESIGN DRAWINGS FOR INTERIOR ELEVATIONS AND MILLWORK DETAILS FOR ADDITIONAL FINISHES.
  - SEE TYPICAL CORRIDOR PARTIAL ELEVATION ON ID.605 FOR TYPICAL WALL FINISHES IN GUESTROOM CORRIDORS.
  - SEE ID.001 AND ID.002 FOR FINISH SCHEDULES FOR ALL FLOORS.

**FLOOR FINISH LEGEND:**

CP-01: 19.69" x 19.69" CARPET TILE, STACK PATTERN	QT-01: 6" x 6" QUARRY TILE, STACK PATTERN
CP-02: 19.69" x 19.69" CARPET TILE, STACK PATTERN	SC-01: SEALED CONCRETE
CP-03: 19.69" x 19.69" CARPET TILE, 1/2 BOND PATTERN	VCT-01: 12" x 12" VCT, STACK PATTERN
CP-04: 19.69" x 19.69" CARPET TILE, 1/2 BOND PATTERN	VF-01: VINYL FLOORING - ECO RUBBER FITNESS LT GRAY
CP-05: 19.69" x 19.69" CARPET TILE, STACK PATTERN	VF-02: VINYL FLOORING - ECO RUBBER FITNESS TEAL
CT-01: 17" x 28" CERAMIC TILE, 1/2 BOND PATTERN	VF-03: VINYL FLOORING - ECO RUBBER FITNESS ORANGE
CT-03: 9" x 36" CERAMIC TILE, HERRINGBONE PATTERN	VF-04: VINYL FLOORING - ECO RUBBER FITNESS LT GRAY
CT-06: 12" x 24" CERAMIC TILE, STACK PATTERN	

ORNAMENTAL GUARD, CD-01 AT PUBLIC SPACES. CD-02 AT CORNERS. CD-03 AT GUESTROOM CORNERS. CD-04 ON ALL OUTSIDE CORNERS IN PUBLIC AND BACK OF HOUSE AREA. SEE FLOOR PLAN FOR SYMBOL AND SPECIFICATIONS FOR MORE INFORMATION.



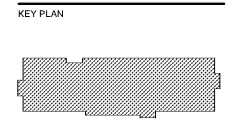
**1 3RD FLOOR PLAN**  
SCALE: 1/8" = 1'-0"



Ragona Architecture & Design, PLLC  
145A Scalespark Road, Charlotte, NC 28209  
T: 704.372.9716 www.rad-arch.com



**HOME 2 SUITES BELMONT**  
HAWLEY AVE  
BELMONT, NC 28012



Revisions		
#	Date	Description

Project Number: 18021  
Issued for: CONSTRUCTION  
Issue Date: 2019-06-07

DRAWING TITLE  
**3RD FLOOR FINISH PLAN**

SHEET NUMBER  
**ID.103**