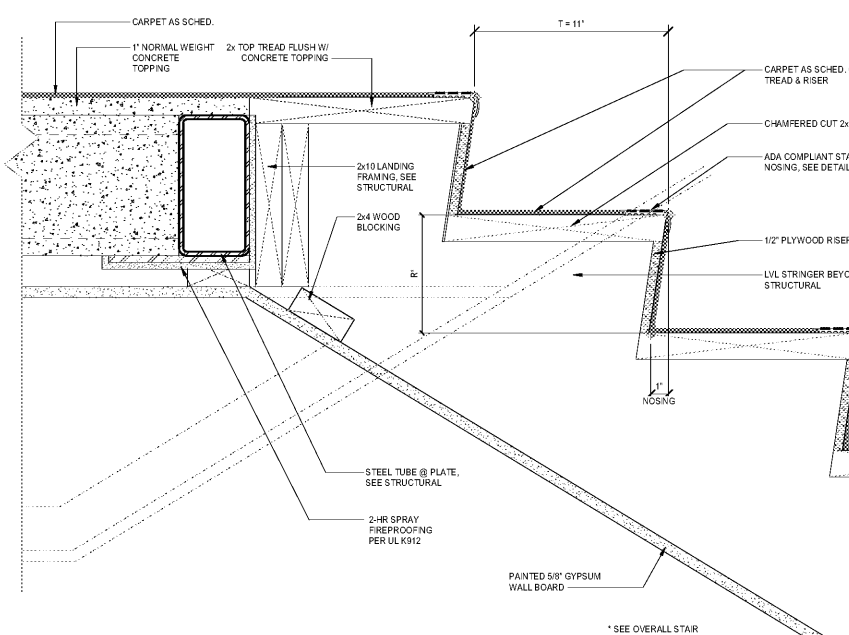
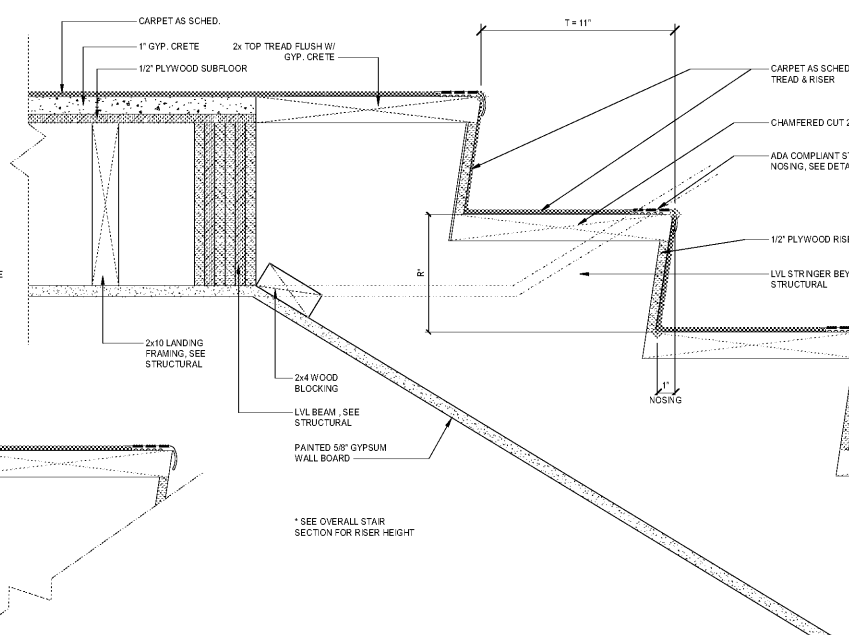


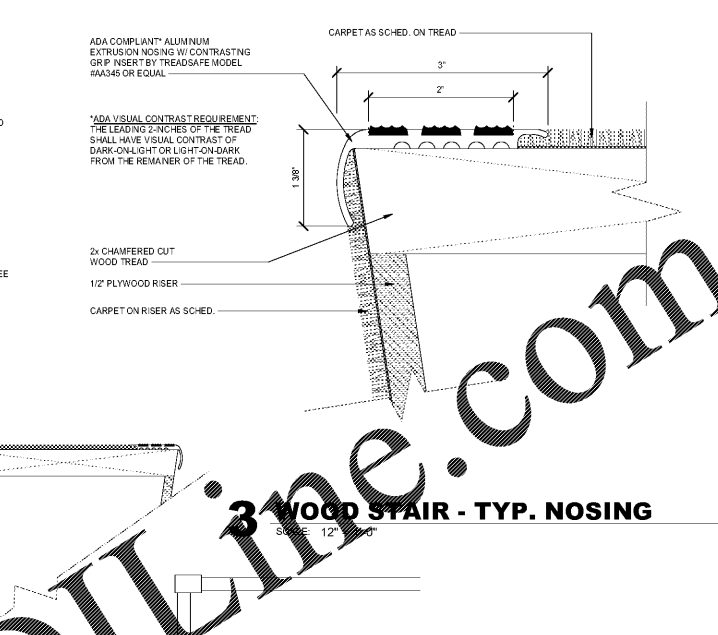
| Revisions | | |
|-----------|------|-------------|
| # | Date | Description |
| | | |



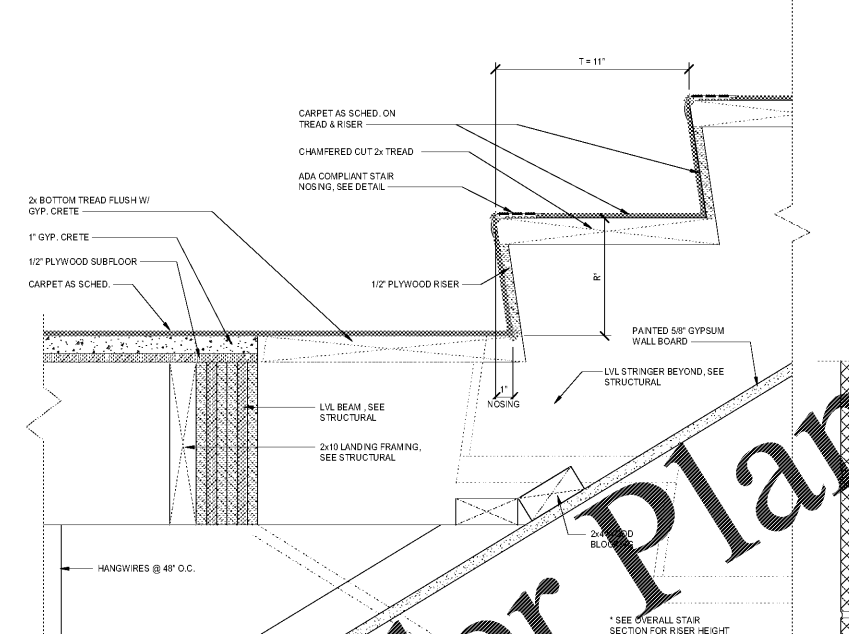
1 WOOD STAIR - TOP LANDING @ STEEL
SCALE: 3" = 1'-0"



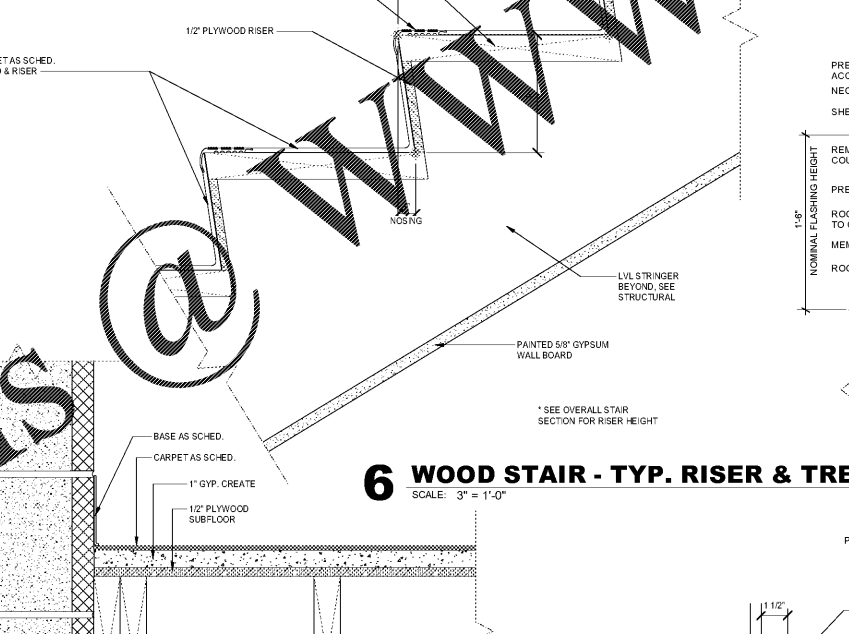
2 WOOD STAIR - TYP. TOP & INT. LANDING
SCALE: 3" = 1'-0"



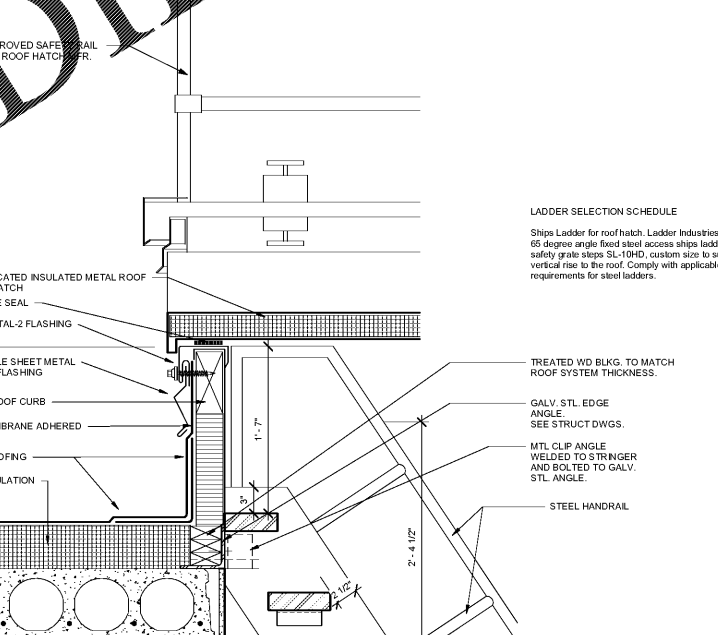
3 WOOD STAIR - TYP. NOSING
SCALE: 1 1/2" = 1'-0"



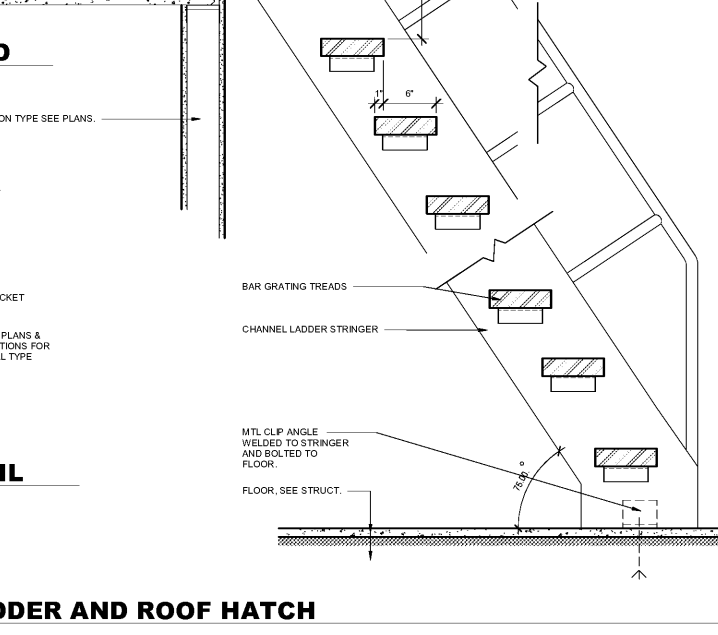
4 WOOD STAIR - TYP. BOTTOM LANDING
SCALE: 3" = 1'-0"



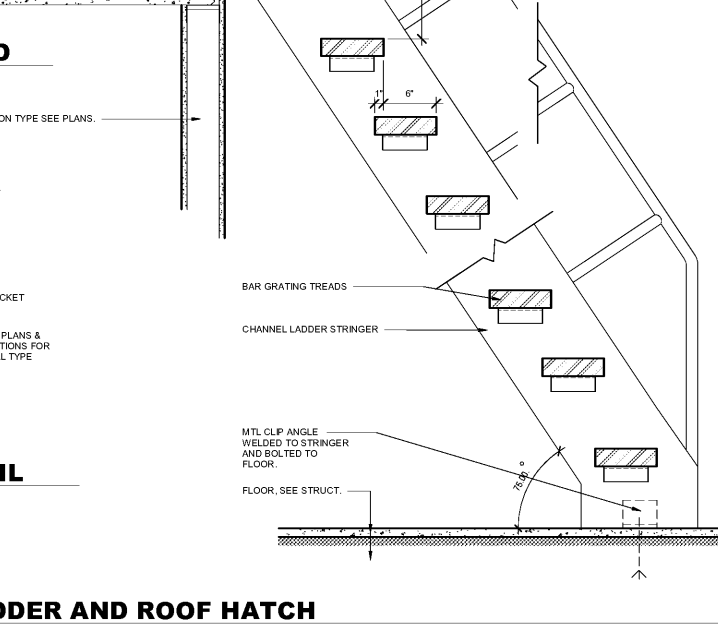
5 WOOD STAIR - TYP. CMU CONNECTION
SCALE: 3" = 1'-0"



6 WOOD STAIR - TYP. RISER & TREAD
SCALE: 3" = 1'-0"



7 WALL MOUNTED HANDRAIL DETAIL
SCALE: 3" = 1'-0"



8 SHIPS LADDER AND ROOF HATCH
SCALE: 1 1/2" = 1'-0"