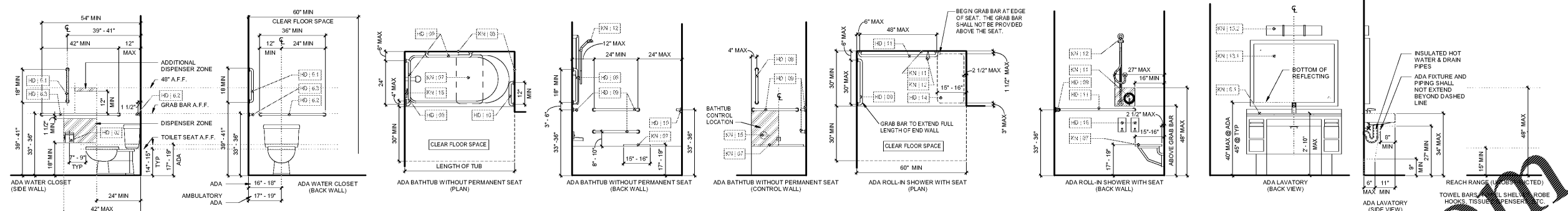




Revisions		
#	Date	Description



HD:02	SINGLE TOILET TISSUE DISPENSER	HD:01	WALL MOUNTED VERTICAL GRAB BAR 1-1/4" DIA. x 18" LONG	HD:11	WALL MOUNTED HORIZONTAL GRAB BAR 1-1/4" DIA. x 42" LONG	KN:03	SHOWER SURROUND	KN:12	HAND SHOWER AND SIDE BAR WITH ON/OFF CONTROL WITH NON-POSITIVE SHUT OFF
HD:03	DOUBLE TOILET TISSUE DISPENSER - UNDERMOUNT	HD:02	WALL MOUNTED HORIZONTAL GRAB BAR 1-1/4" DIA. x 36" LONG	HD:14	PERMANENT FOLDING SHOWER SEAT - SURFACE MOUNTED	KN:04	ACCESSIBLE VANITY UNIT (GF-303)	KN:13	VANITY MIRROR (GF-503)
HD:04	TOWEL HOOK - SURFACE MOUNTED	HD:03	WALL MOUNTED HORIZONTAL GRAB BAR 1-1/4" DIA. x 42" LONG	HD:15	SHOWER SOAP DISPENSER - SURFACE MOUNTED	KN:05	VANITY UNIT (GF-302)	KN:14	LIGHT FIXTURE (GF-203)
HD:05	BOWED SHOWER CURTAIN ROD - SURFACE MOUNTED	HD:04	WALL MOUNTED VERTICAL GRAB BAR 1-1/4" DIA. x 18" LONG			KN:06	ACCESSIBLE REMOVABLE TUB SEAT	KN:15	SHOWER CONTROLS - ON/OFF PRESSURE BALANCING VALVE
HD:06	STRAIGHT SHOWER CURTAIN ROD - SURFACE MOUNTED	HD:05	WALL MOUNTED HORIZONTAL GRAB BAR 1-1/4" DIA. x 24" LONG			KN:07	SHOWER HEAD		
		HD:06	WALL MOUNTED HORIZONTAL GRAB BAR 1-1/4" DIA. x 12" LONG			KN:08	SHOWER DIVERter VALVE		

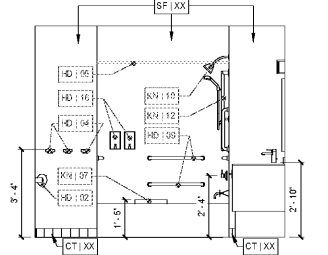
GUESTROOM TOILET ACCESSORY NOTES

- G.C. TO PROVIDE FIRE RETARDANT TREATED BLOCKING IN THE WALL BEHIND ALL TOILET ACCESSORIES. ALL GRAB BARS AND THEIR FASTENERS SHALL BE MIN. OF 3/4" PLYWOOD, U.N.O.
- HIGHEST CONTROL, OPERATING MECHANISM, AND/OR DISPENSING / DISPOSAL SLOT OF TOILET ROOM ACCESSORIES SHALL BE 48" MAX. A.F.F.
- CONTROLS & OPERATING MECHANISMS OF TOILET ROOM ACCESSORIES SHALL BE OPERABLE BY A 5 LB. MAX FORCE.
- CLEARANCE FROM WALL TO FIXTURES OR ACCESSORIES SHOWN ON THE TOILET ACCESSORY LEGEND ARE FROM FINISHED SURFACE OF WALL, NOT FROM WALL STUDS.
- FLUSH CONTROL VALVES IN THE HC ACCESSIBLE TOILET STALL SHALL BE MOUNTED ON THE WIDE SIDE OF THE TOILET AREA AND SHALL BE ACCESSIBLE BELOW THE GRAB BAR.
- PROVIDE PROTECTIVE INSULATING COVERS FOR HOT WATER SUPPLIES, DRAIN, AND P-TRAP. COLOR SHALL MATCH THE FIXTURE.
- SEE PLUMBING DRAWINGS FOR ALL PLUMBING FIXTURES.

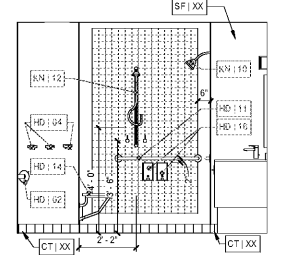
LAVATORY INFORMATION IS FOR REQUIRED DIMENSIONAL TOLERANCES ONLY. SEE PLAN DETAILS AND SECTIONS FOR SPECIFIC VANITY DESIGN.

FOR ACCESSIBLE GUEST BATHROOM ACCESSORIES ONLY. SEE ELEVATIONS.

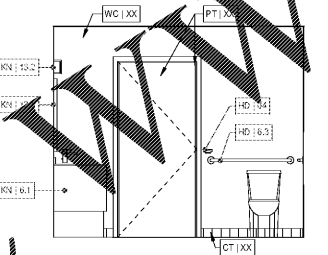
20 DBL QUEEN STUDIO ADA TUB
 SCALE: 3/8" = 1'-0"



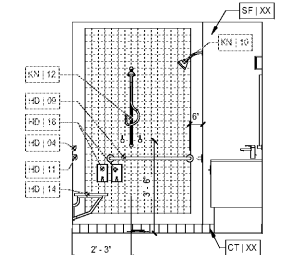
16 KING STUDIO ADA RIS
 SCALE: 3/8" = 1'-0"



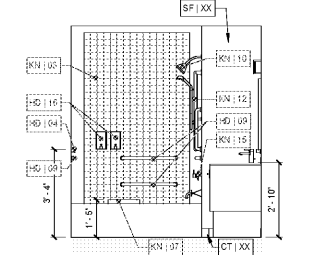
12 KING STUDIO ADA TUB
 SCALE: 3/8" = 1'-0"



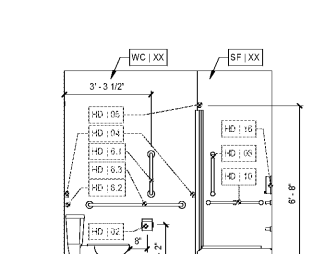
8 KING SUITE ADA RIS
 SCALE: 3/8" = 1'-0"



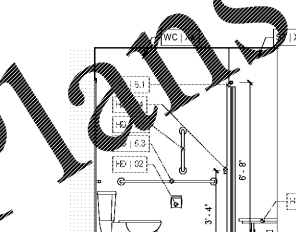
4 KING SUITE ADA TUB
 SCALE: 3/8" = 1'-0"



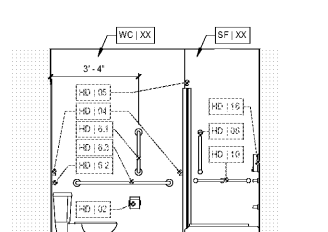
19 DBL QUEEN STUDIO ADA TUB
 SCALE: 3/8" = 1'-0"



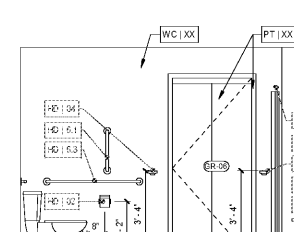
15 KING STUDIO ADA RIS
 SCALE: 3/8" = 1'-0"



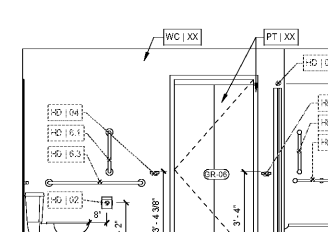
11 KING STUDIO ADA TUB
 SCALE: 3/8" = 1'-0"



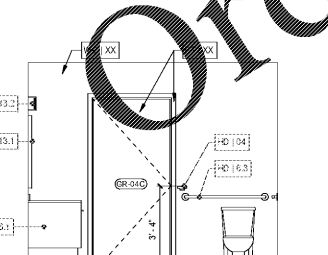
7 KING SUITE ADA RIS
 SCALE: 3/8" = 1'-0"



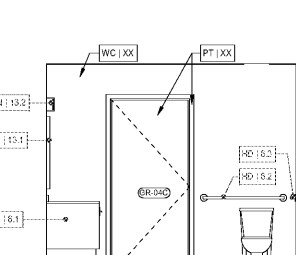
3 KING SUITE ADA TUB
 SCALE: 3/8" = 1'-0"



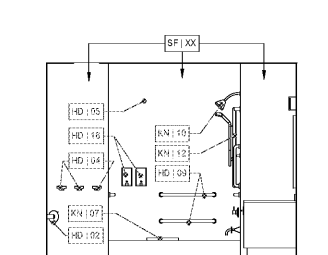
18 DBL QUEEN STUDIO ADA TUB
 SCALE: 3/8" = 1'-0"



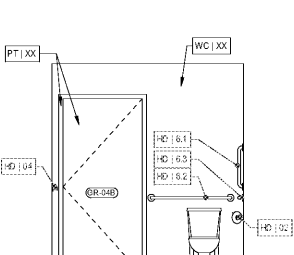
14 KING STUDIO ADA RIS
 SCALE: 3/8" = 1'-0"



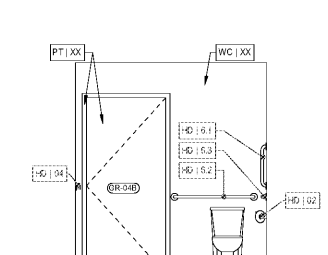
10 KING STUDIO ADA TUB
 SCALE: 3/8" = 1'-0"



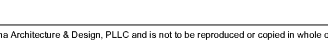
6 KING SUITE ADA RIS
 SCALE: 3/8" = 1'-0"



2 KING SUITE ADA TUB
 SCALE: 3/8" = 1'-0"



17 DBL QUEEN STUDIO ADA TUB
 SCALE: 3/8" = 1'-0"



13 KING STUDIO ADA RIS
 SCALE: 3/8" = 1'-0"



9 KING STUDIO ADA TUB
 SCALE: 3/8" = 1'-0"



5 KING SUITE ADA RIS
 SCALE: 3/8" = 1'-0"



1 KING SUITE ADA TUB
 SCALE: 3/8" = 1'-0"

