

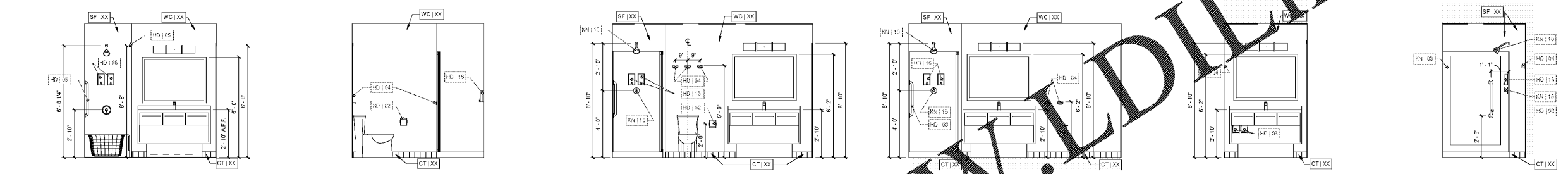
[HD] 1.02	SINGLE TOILET TISSUE DISPENSER	[HD] 1.01	WALL MOUNTED VERTICAL GRAB BAR 1-1/4" DIA. x 18" LONG	[HD] 1.11	WALL MOUNTED HORIZONTAL GRAB BAR 1-1/4" DIA. x 42" LONG	[KN] 1.02	SHOWER SURROUND	[KN] 1.12	HAND SHOWER AND SIDE BAR WITH ON/OFF CONTROL WITH NON-POSITIVE SHUT OFF
[HD] 1.03	DOUBLE TOILET TISSUE DISPENSER - UNDERMOUNT	[HD] 1.02	WALL MOUNTED HORIZONTAL GRAB BAR 1-1/4" DIA. x 36" LONG	[HD] 1.14	PERMANENT FOLDING SHOWER SEAT - SURFACE MOUNTED	[KN] 1.01	ACCESSIBLE VANITY UNIT (GF-303)	[KN] 1.11	VANITY MIRROR (GF-503)
[HD] 1.04	TOWEL HOOK - SURFACE MOUNTED	[HD] 1.03	WALL MOUNTED HORIZONTAL GRAB BAR 1-1/4" DIA. x 42" LONG	[HD] 1.15	SHOWER SOAP DISPENSER - SURFACE MOUNTED	[KN] 1.02	VANITY UNIT (GF-302)	[KN] 1.12	LIGHT FIXTURE (GF-203)
[HD] 1.05	BOWED SHOWER CURTAIN ROD - SURFACE MOUNTED	[HD] 1.04	WALL MOUNTED VERTICAL GRAB BAR 1-1/4" DIA. x 18" LONG	[HD] 1.16		[KN] 1.03	ACCESSIBLE REMOVABLE TUB SEAT	[KN] 1.13	SHOWER CONTROLS - ON/OFF PRESSURE BALANCING VALVE
[HD] 1.06	STRAIGHT SHOWER CURTAIN ROD - SURFACE MOUNTED	[HD] 1.05	WALL MOUNTED HORIZONTAL GRAB BAR 1-1/4" DIA. x 12" LONG	[HD] 1.17		[KN] 1.04	SHOWER HEAD	[KN] 1.14	SHOWER DIVERTER VALVE
[HD] 1.07		[HD] 1.06	WALL MOUNTED HORIZONTAL GRAB BAR 1-1/4" DIA. x 12" LONG	[HD] 1.18		[KN] 1.05		[KN] 1.15	

GUESTROOM TOILET ACCESSORY NOTES

- G.C TO PROVIDE FIRE RETARDANT TREATED BLOCKING IN THE WALL BEHIND ALL TOILET ACCESSORIES. ALL GRAB BARS AND THEIR FASTENERS.
- ALL F.T. BLOCKING TO BE MIN. OF 3/4" PLYWOOD, U.N.O.
- HIGHEST CONTROL, OPERATING MECHANISM, AND/OR DISPENSING / DISPOSAL SLOT OF TOILET ROOM ACCESSORIES SHALL BE 48" MAX. A.F.F.
- CONTROL & OPERATING MECHANISMS OF TOILET ROOM ACCESSORIES SHALL BE OPERABLE BY A 5 LB. MAX. FORCE.
- CLEARANCE FROM WALL TO FIXTURES OR ACCESSORIES SHOWN ON THE TOILET ACCESSORY LEGEND ARE FROM FINISHED SURFACE OF WALL, NOT FROM WALL STUDS.
- FLUSH CONTROL VALVES IN THE HC ACCESSIBLE TOILET STALL SHALL BE MOUNTED ON THE WIDE SIDE OF THE TOILET AREA AND SHALL BE ACCESSIBLE BELOW THE GRAB BAR.
- PROVIDE PROTECTIVE INSULATING COVERS FOR HOT WATER SUPPLIES, DRAIN, AND P-TRAP. COLOR SHALL MATCH THE FIXTURE.
- SEE PLUMBING DRAWINGS FOR ALL PLUMBING FIXTURES.

LAVATORY INFORMATION IS FOR REQUIRED DIMENSIONAL TOLERANCES ONLY. SEE PLAN DETAILS AND SECTIONS FOR SPECIFIC VANITY DESIGNS.

FOR ACCESSIBLE GUESTROOM ACCESSORIES ONLY. SEE ELEVATIONS.



24 DBL QUEEN STUDIO LG
SCALE: 3/8" = 1'-0"

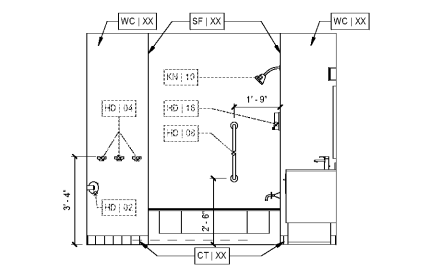
20 KING STUDIO WIDE
SCALE: 3/8" = 1'-0"

16 KING SUITE END
SCALE: 3/8" = 1'-0"

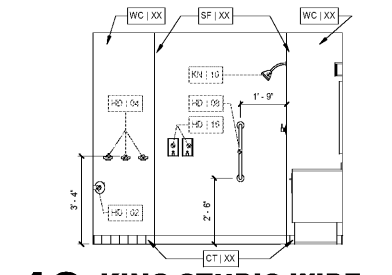
12 KING SUITE
SCALE: 3/8" = 1'-0"

8 DBL QUEEN STUDIO
SCALE: 3/8" = 1'-0"

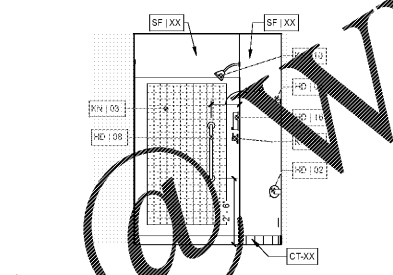
4 KING STUDIO
SCALE: 3/8" = 1'-0"



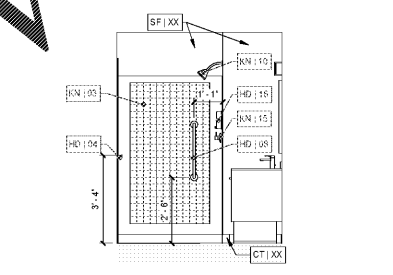
23 DBL QUEEN STUDIO LG
SCALE: 3/8" = 1'-0"



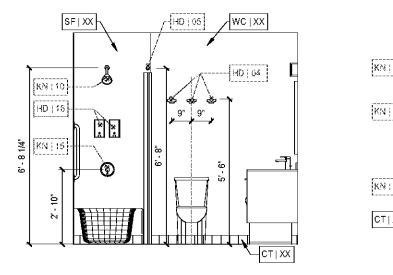
19 KING STUDIO WIDE
SCALE: 3/8" = 1'-0"



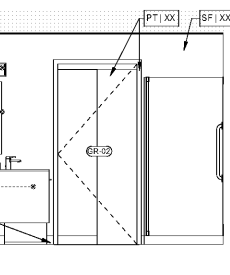
15 KING SUITE END
SCALE: 3/8" = 1'-0"



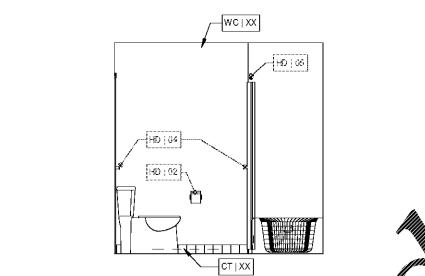
11 KING SUITE
SCALE: 3/8" = 1'-0"



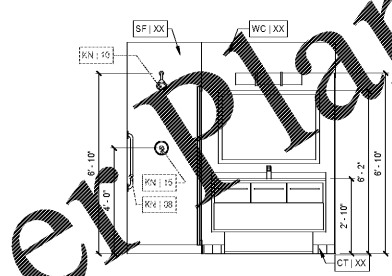
7 DBL QUEEN STUDIO
SCALE: 3/8" = 1'-0"



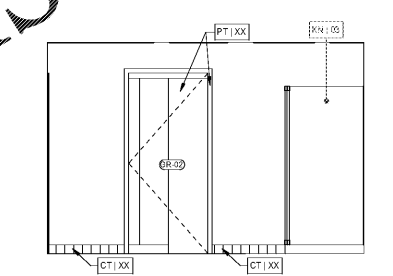
3 KING STUDIO
SCALE: 3/8" = 1'-0"



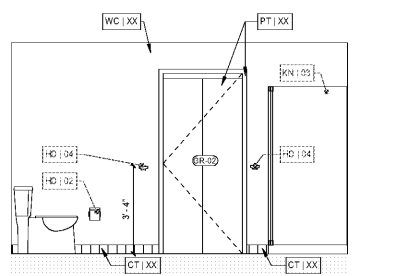
22 DBL QUEEN STUDIO LG
SCALE: 3/8" = 1'-0"



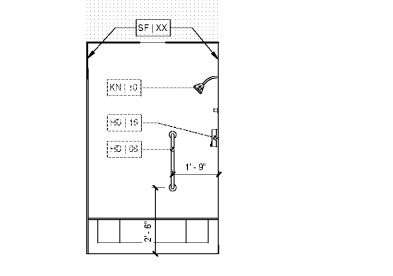
18 KING STUDIO WIDE
SCALE: 3/8" = 1'-0"



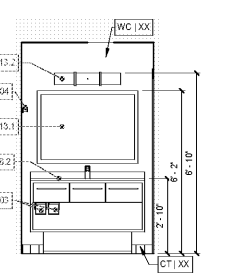
14 KING SUITE END
SCALE: 3/8" = 1'-0"



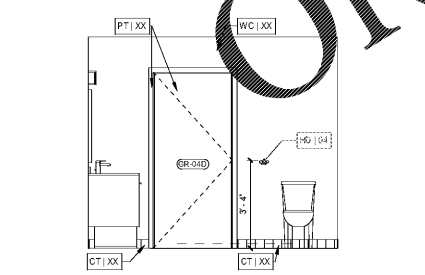
10 KING SUITE
SCALE: 3/8" = 1'-0"



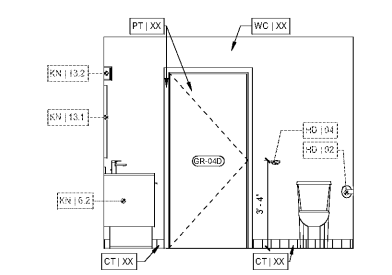
6 DBL QUEEN STUDIO
SCALE: 3/8" = 1'-0"



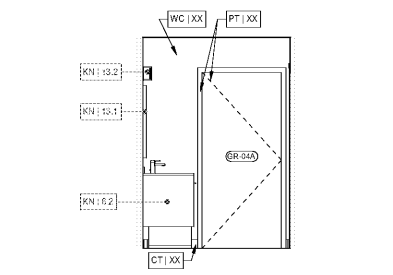
2 KING STUDIO
SCALE: 3/8" = 1'-0"



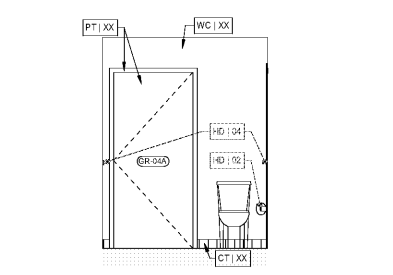
21 DBL QUEEN STUDIO LG
SCALE: 3/8" = 1'-0"



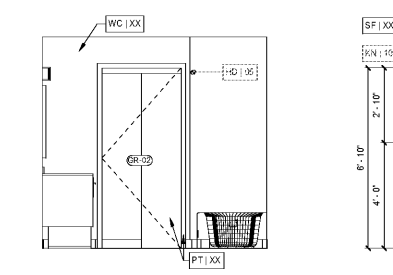
17 KING STUDIO WIDE
SCALE: 3/8" = 1'-0"



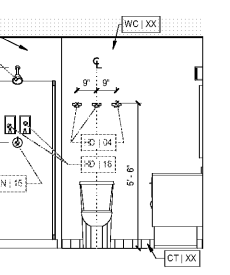
13 KING SUITE END
SCALE: 3/8" = 1'-0"



9 KING SUITE
SCALE: 3/8" = 1'-0"



5 DBL QUEEN STUDIO
SCALE: 3/8" = 1'-0"



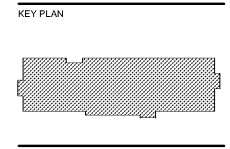
1 KING STUDIO
SCALE: 3/8" = 1'-0"



Radina Architecture & Design, PLLC
145A Scalespark Road, Charlotte, NC 28209
T: 704.372.0716 www.rad-arch.com



HOME 2 SUITES BELMONT
HAWLEY AVE
BELMONT, NC 28012



Revisions		
#	Date	Description

Project Number: 18021
Issued for: CONSTRUCTION
Issue Date: 2019-06-07

DRAWING TITLE
GUESTROOM RESTROOM ELEVATIONS

SHEET NUMBER
A.621