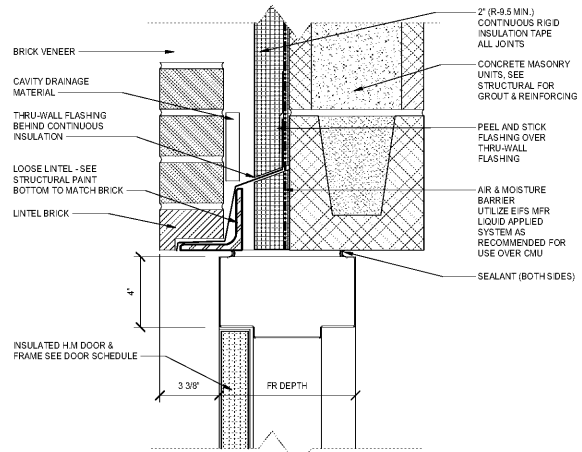
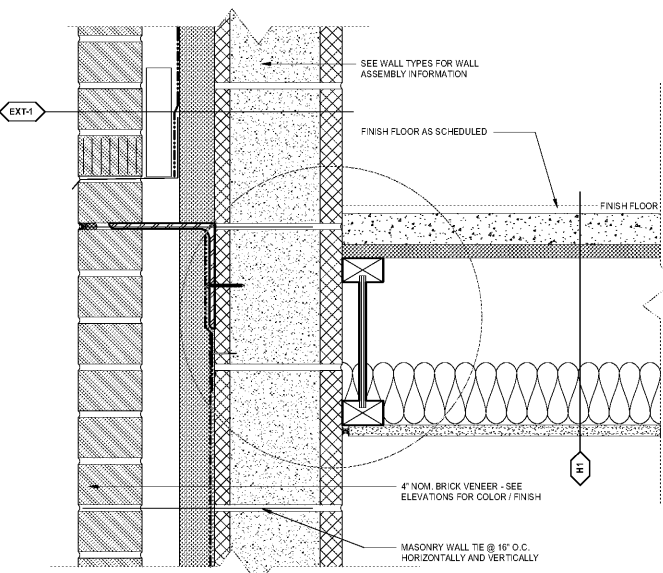


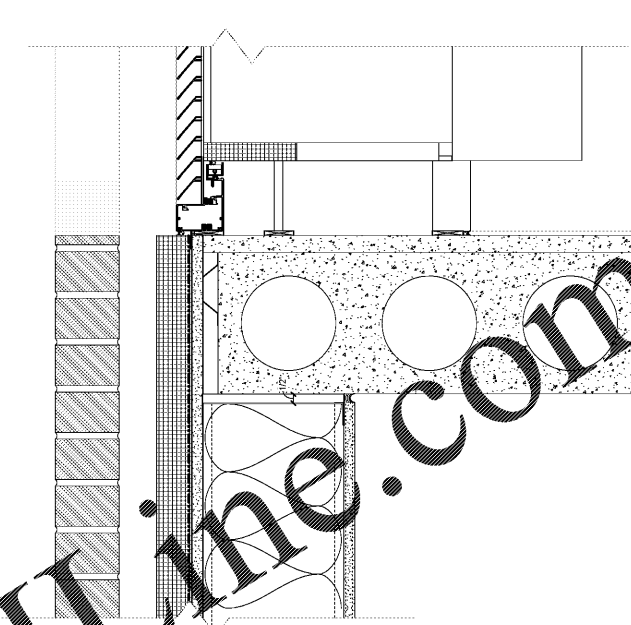
ALL OPENINGS SHALL BE FLASHED IN ACCORDANCE WITH APPROVED EIFS MANUFACTURER'S AIR & MOISTURE-RESISTANT BARRIER SYSTEM SEE STANDARD DETAIL ON WINDOW SHEETS



**7 WSD WALL - 4" BRICK, 8" CMU, STOREFRONT HEAD**  
SCALE: 3" = 1'-0"

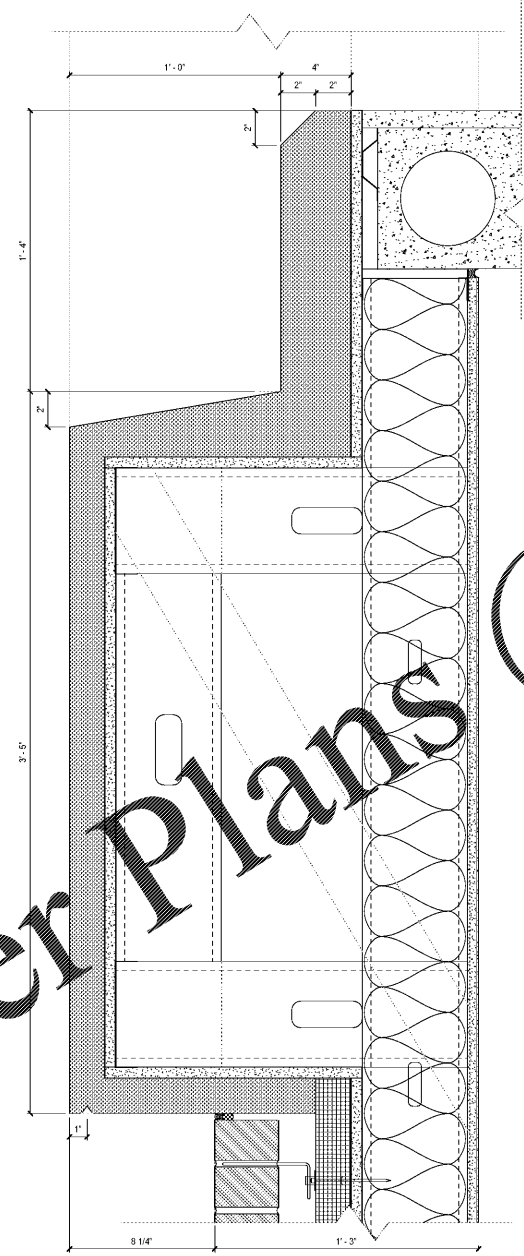
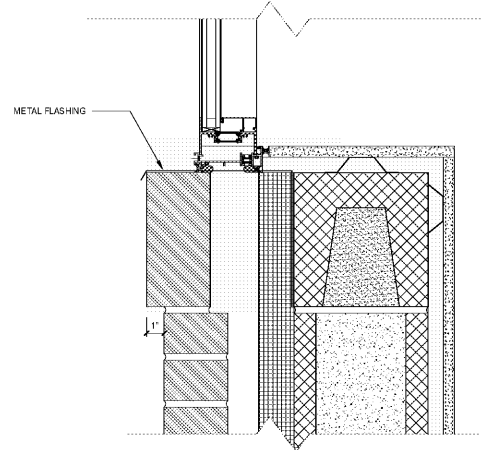


**5 WSD WALL - 4" BRICK, 8" CMU, STAIR FLOOR**  
SCALE: 3" = 1'-0"

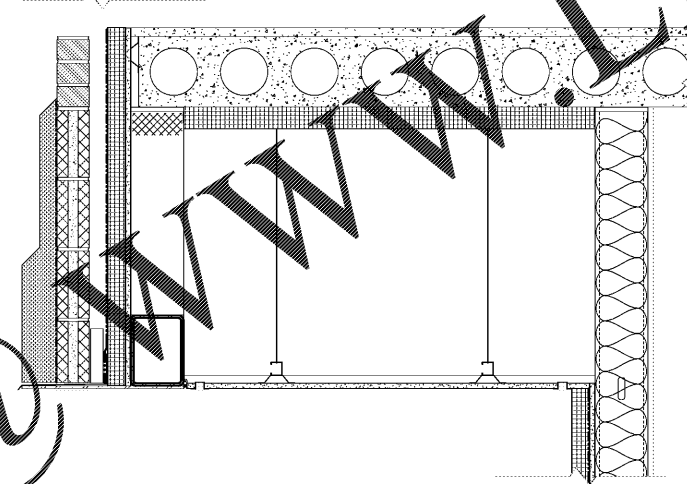


**2 WSD WALL - 4" BRICK, 6" CFMF, PTAC SILL ONLY**  
SCALE: 3" = 1'-0"

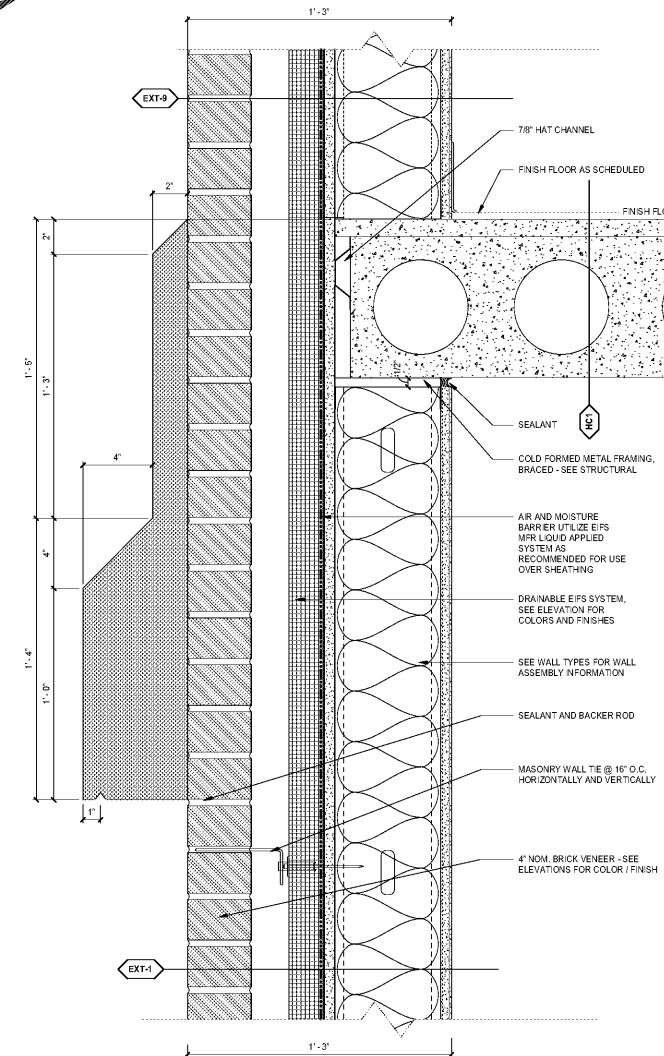
**10 WSD WALL - 4" BRICK, 8" CMU, HM DOOR HEAD**  
SCALE: 3" = 1'-0"



**6 WSD WALL - 2" EIFS, 6" CFMF DOUBLE BUMPOUT**  
SCALE: 3" = 1'-0"

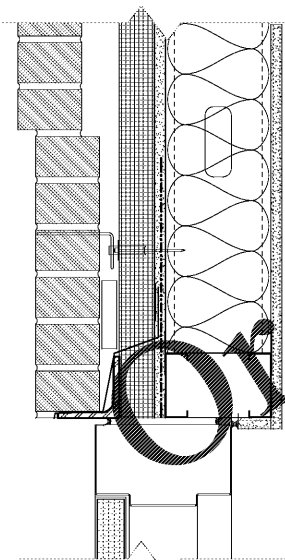


**4 WSD WALL - 4" BRICK, 2" EIFS, OVERHANG**  
SCALE: 1 1/2" = 1'-0"

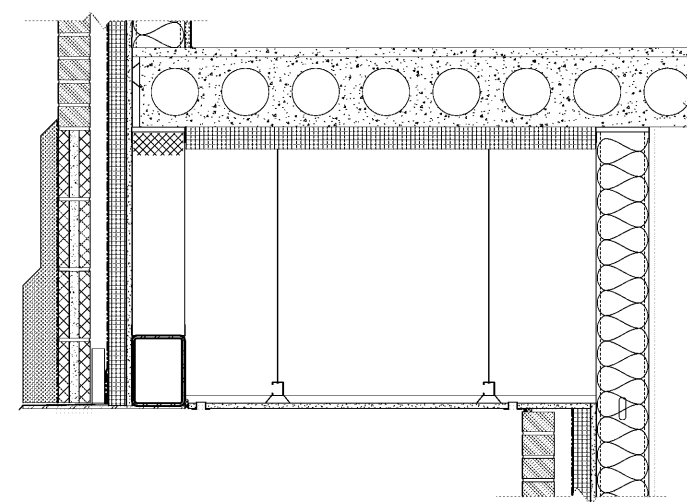


**1 WSD WALL - 4" EIFS, 4" BRICK, 6" CFMF, BUMPOUT**  
SCALE: 3" = 1'-0"

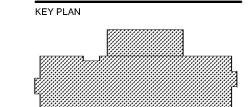
**9 WSD WALL - 4" BRICK, 8" CMU, WINDOW SILL**  
SCALE: 3" = 1'-0"



**8 WSD WALL - 4" BRICK, 6" CFMF, HM DOOR HEAD**  
SCALE: 3" = 1'-0"



**3 WSD WALL - 4" BRICK, 4" BRICK, OVERHANG**  
SCALE: 1 1/2" = 1'-0"



Revisions		
#	Date	Description

Project Number: 18021  
Issued for: CONSTRUCTION  
Issue Date: 2019-06-07

DRAWING TITLE  
**WALL SECTION DETAILS**

SHEET NUMBER  
**A.504**