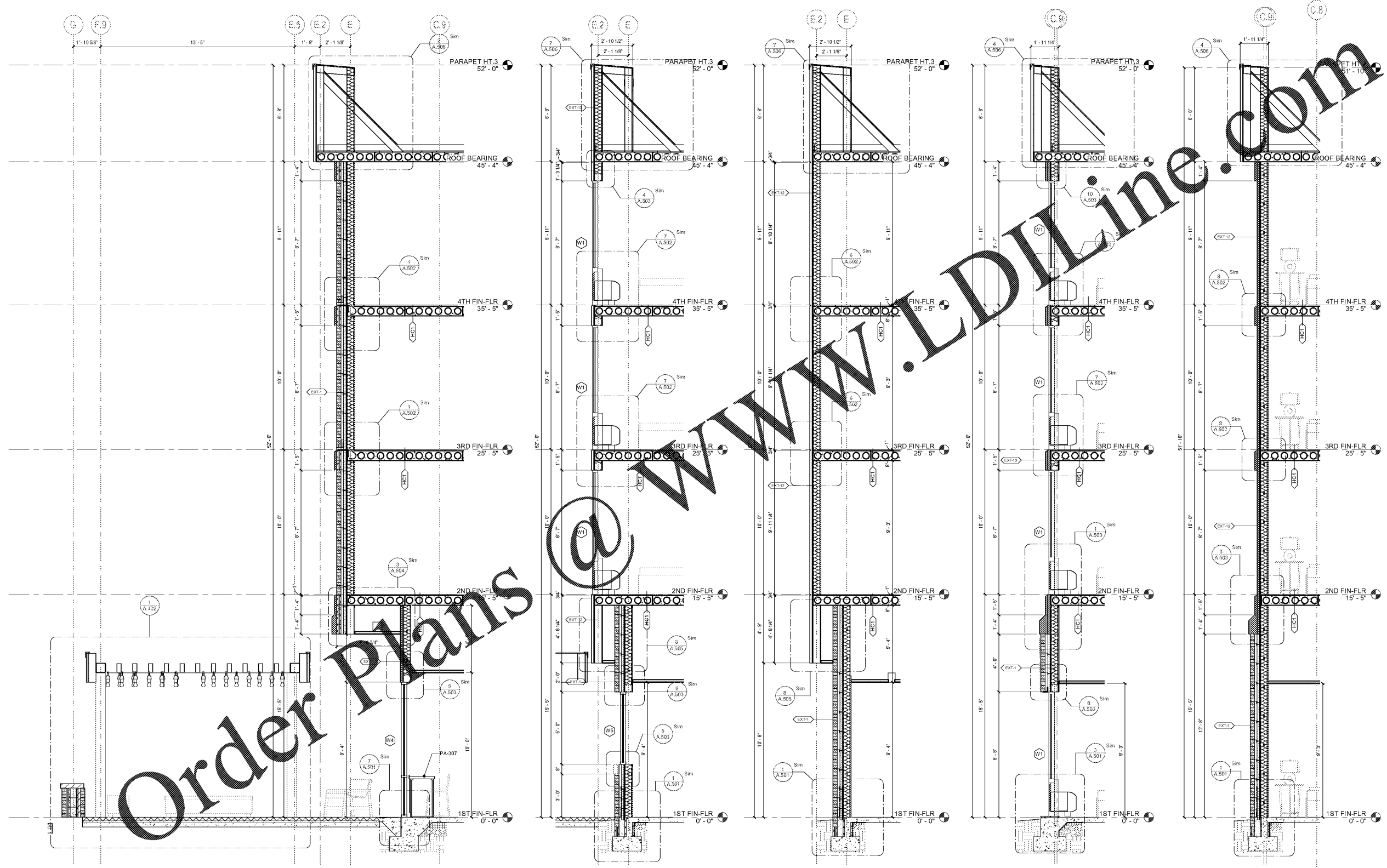




Revisions		
#	Date	Description



5 WS BRICK BUMPOUT AT PERCH
SCALE: 3/8" = 1'-0"

4 WS BRICK BASE, 2" EIFS BUMPOUT AT PTAC
SCALE: 3/8" = 1'-0"

3 WS BRICK BASE, 2" EIFS BUMPOUT
SCALE: 3/8" = 1'-0"

2 WS BRICK BASE, 2" EIFS AT PTAC
SCALE: 3/8" = 1'-0"

1 WS BRICK BASE, 2" EIFS
SCALE: 3/8" = 1'-0"