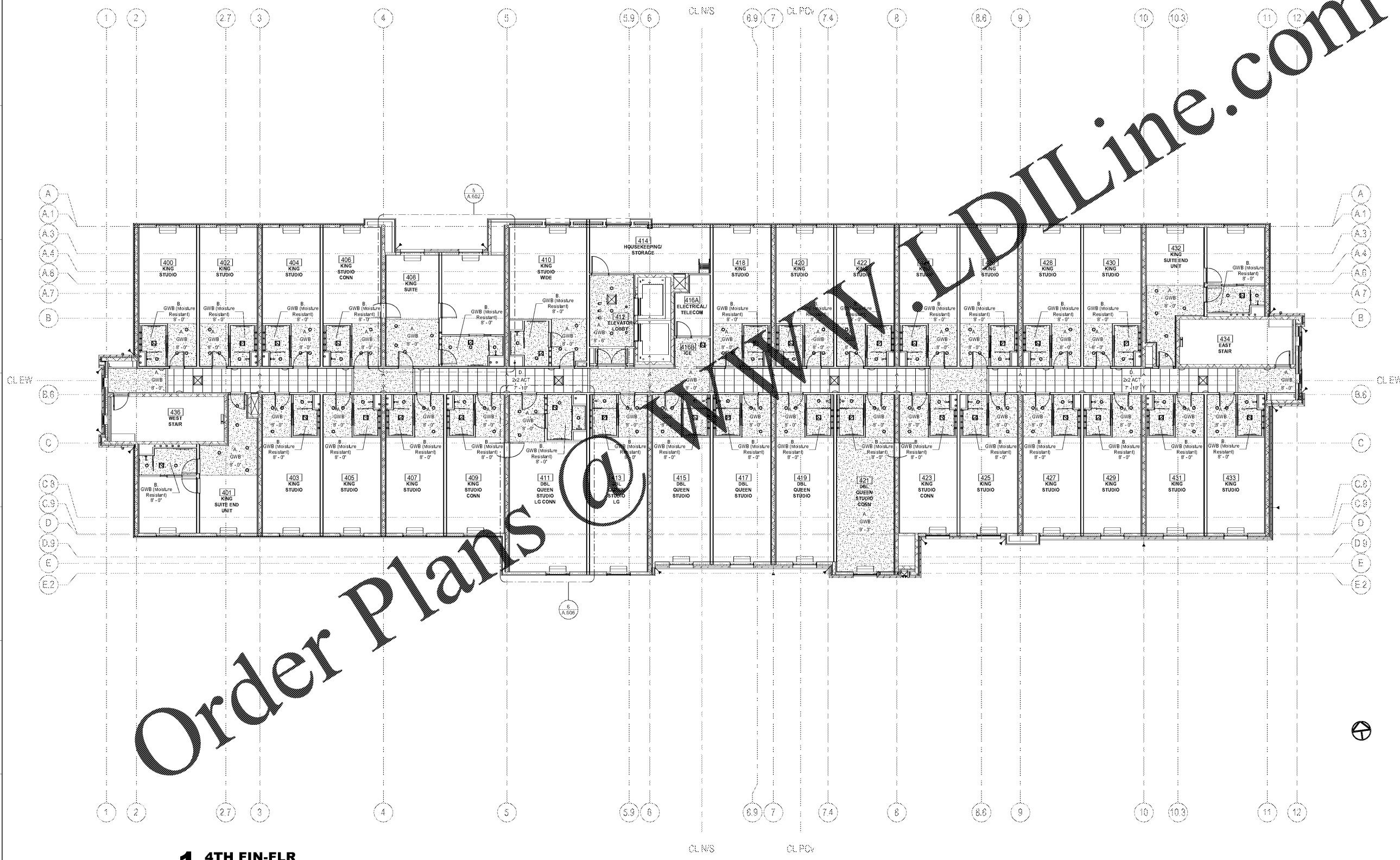


Revisions		
#	Date	Description

CEILING TYPE SCHEDULE	
A.	PRIMED AND PAINTED GYPSUM WALL BOARD ON QUIKSTIX
B.	PRIMED AND PAINTED GYPSUM WALL BOARD (MOISTURE RESISTANT) ON QUIKSTIX
C.	OPEN TO UNDERSIDE OF FLOOR / ROOF SYSTEM ABOVE - PAINT ALL ELEMENTS WITH TEXTURED FINISH
D.	2 X 2 LAY-IN ACOUSTICAL CEILING TILE SUSPENDED FROM STRUCTURE
E.	2 X 4 LAY-IN ACOUSTICAL CEILING TILE SUSPENDED FROM STRUCTURE
F.	OPEN TO UNDERSIDE OF FLOOR / ROOF SYSTEM
G.	TONGUE-AND-GROOVE STAINED WOOD ON QUIKSTIX
H.	2-HR RATED HORIZONTAL SHAFT WALL ASSEMBLY PER GP / CC 120-01

CEILING PLAN LEGEND	
	GYPSUM WALL BOARD - SEE HORIZONTAL ASSEMBLIES & CEILING DETAILS FOR MORE INFORMATION
	ACOUSTICAL CEILING TILE - 2 X 2 CEILING TEE GRID SYSTEM
	LIGHT FIXTURE - SEE ELECTRICAL
	LIGHT FIXTURE - SEE ELECTRICAL
	LIGHT FIXTURE - SEE ELECTRICAL
	MECHANICAL LINEAR SLOT DIFFUSER - SEE MECHANICAL
	MECHANICAL DIFFUSER - SEE MECHANICAL
	MECHANICAL DIFFUSER - SEE MECHANICAL
	EXHAUST - SEE MECHANICAL



1 4TH FIN-FLR
 SCALE: 1/8" = 1'-0"