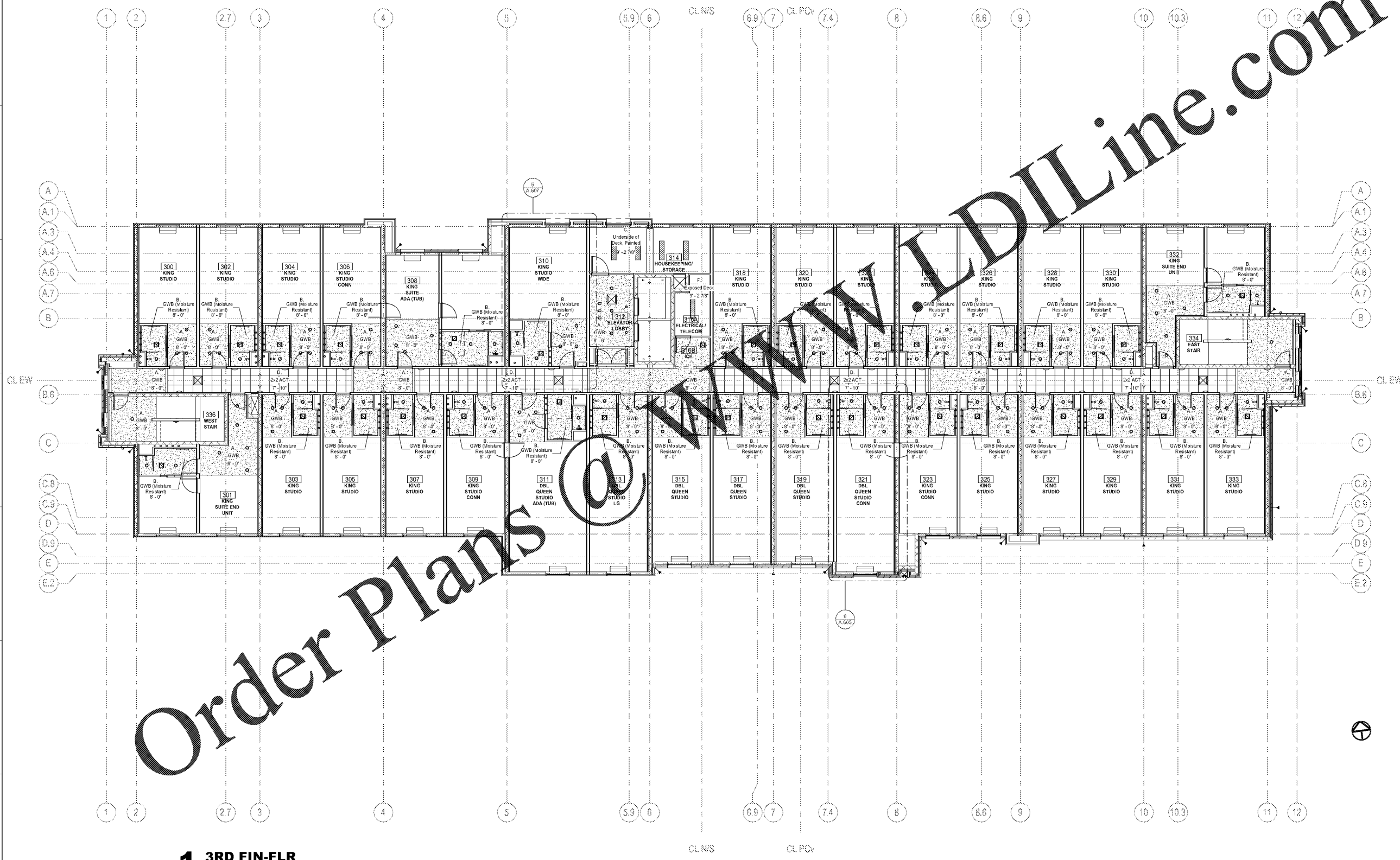




| Revisions | | |
|-----------|------|-------------|
| # | Date | Description |
| | | |

| CEILING TYPE SCHEDULE | |
|-----------------------|--|
| A. | PRIMED AND PAINTED GYPSUM WALL BOARD ON QUIKSTIX |
| B. | PRIMED AND PAINTED GYPSUM WALL BOARD (MOISTURE RESISTANT) ON QUIKSTIX |
| C. | OPEN TO UNDERSIDE OF FLOOR / ROOF SYSTEM ABOVE - PAINT ALL ELEMENTS WITH TEXTURED FINISH |
| D. | 2 X 2 LAY-IN ACOUSTICAL CEILING TILE SUSPENDED FROM STRUCTURE |
| E. | 2 X 4 LAY-IN ACOUSTICAL CEILING TILE SUSPENDED FROM STRUCTURE |
| F. | OPEN TO UNDERSIDE OF FLOOR / ROOF SYSTEM |
| G. | TONGUE-AND-GROOVE STAINED WOOD ON QUIKSTIX |
| H. | 2-HR RATED HORIZONTAL SHAFT WALL ASSEMBLY PER GP / CC 129-01 |

| CEILING PLAN LEGEND | |
|---------------------|--|
| | GYPSUM WALL BOARD - SEE HORIZONTAL ASSEMBLIES & CEILING DETAILS FOR MORE INFORMATION |
| | ACOUSTICAL CEILING TILE - 2 X 2 CEILING TEE GRID SYSTEM |
| | LIGHT FIXTURE - SEE ELECTRICAL |
| | LIGHT FIXTURE - SEE ELECTRICAL |
| | LIGHT FIXTURE - SEE ELECTRICAL |
| | MECHANICAL LINEAR SLOT DIFFUSER - SEE MECHANICAL |
| | MECHANICAL DIFFUSER - SEE MECHANICAL |
| | MECHANICAL DIFFUSER - SEE MECHANICAL |
| | EXHAUST - SEE MECHANICAL |



Order Plans @ www.dlLine.com

1 3RD FIN-FLR
SCALE: 1/8" = 1'-0"