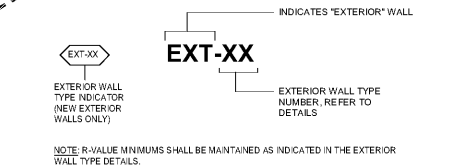


EXTERIOR WALL TYPE NOTES:

- UNLESS OTHERWISE NOTED, ALL DIMENSIONS ARE TO FACE OF GYPSUM WALL BOARD FINISH FACE OF MASONRY OR FACE OF CONCRETE.
- PROVIDE WOOD BLOCKING FOR ALL WALL-MOUNTED ITEMS IN STUD WALLS INCLUDING, BUT NOT LIMITED TO ARCHITECTURAL WOODWORK, FINISH CARPENTRY, RAILINGS, HARDWARE, AT DOOR STOPS, TOILET AND BATH ACCESSORIES, AND SIMILAR MOUNTED ITEMS PROVIDE WOOD BLOCKING FOR ALL WALL-MOUNTED ITEMS IN STUD WALLS INCLUDING, BUT NOT LIMITED TO ARCHITECTURAL WOODWORK, FINISH CARPENTRY, RAILINGS, HARDWARE, AT DOOR STOPS, TOILET AND BATH ACCESSORIES, AND SIMILAR MOUNTED ITEMS.
- SEE STRUCTURAL FOR REINFORCEMENT OF MASONRY WALLS.
- SEE FINISH SCHEDULE, INTERIOR ELEVATIONS, AND INTERIOR DETAILS FOR ADDITIONAL WALL FINISHES AND INFORMATION.
- ALL EXTERIOR COLD-FORMED METAL FRAMING SHALL BE PRE-ENGINEERED BY AN ENGINEER CARRYING A LICENSE IN THE STATE IN WHICH THE PROJECT IS LOCATED. SUBMIT COLD-FORMED METAL FRAMING SHOP DRAWINGS FOR REVIEW BY ARCHITECT AND STRUCTURAL ENGINEER OF RECORD.
- INTERIOR FIRE RATED PARTITIONS INTERSECTING EXTERIOR NON-FIRE RATED WALLS SHALL CONTINUE TO THE BACK OF THE EXTERIOR SHEATHING OR MASONRY.
- FOR ALL FIRE RATED WALLS THAT GO ABOVE A CEILING, PROVIDE THE FOLLOWING: AT THE PLENUM SPACE ON BOTH SIDES OF THE RATED WALL, PROVIDE 1" MINIMUM "FIRE AND SMOKE BARRIER, PROTECT" ALL OPENINGS, NOTED IN SHOP DRAWINGS, EVERY 15 FEET ON CENTER MINIMUM ALONG RATED WALL WITH 1" MINIMUM SPACERS.
- FIRE RATED EXTERIOR WALL TYPES INTERSECTING AT FLOOR ASSEMBLIES CARRYING THE SAME FIRE RATING, REFER TO THE RELATED DETAILS AND PLANS FOR REQUIRED FIRE RATINGS.
- AT ALL EXTERIOR NON-BEARING COLD-FORMED METAL FRAMED WALLS, HOLD STUD A MINIMUM 24" ON CENTER SHORT AT EACH END AND PROVIDE SLIDE CONNECTION AS DETAILED TO THE "TOP OF TRAIL" OF THE WALL.
- EXTERIOR WALL TYPES WITH TOILET ROOMS AND OTHER WET AREAS SHALL HAVE MOISTURE RESISTANT GYPSUM WALL BOARD IN LIEU OF GYPSUM WALL BOARD INDICATED IN THE EXTERIOR WALL TYPE DETAILS. PROVIDE TYPE "X" WHERE FIRE RATING IS REQUIRED.
- ELEVATION FOR EPS AND BRICK VENEER COLOR DESIGNATIONS.
- SEE SECTION SECTIONS AND DETAILS FOR ADDITIONAL INFORMATION.



NOTE: R-VALUE MINIMUMS SHALL BE MAINTAINED AS INDICATED IN THE EXTERIOR WALL TYPE DETAILS.

EXTERIOR WALL TYPE INDICATOR (NEW EXTERIOR WALLS ONLY)

EXTERIOR WALL TYPE NUMBER, REFER TO DETAILS

INDICATES "EXTERIOR" WALL TYPE INDICATOR (NEW EXTERIOR WALLS ONLY)

EXTERIOR WALL TYPE NUMBER, REFER TO DETAILS

NOTE: R-VALUE MINIMUMS SHALL BE MAINTAINED AS INDICATED IN THE EXTERIOR WALL TYPE DETAILS.

EXTERIOR WALL TYPE INDICATOR (NEW EXTERIOR WALLS ONLY)

EXTERIOR WALL TYPE NUMBER, REFER TO DETAILS

INDICATES "EXTERIOR" WALL TYPE INDICATOR (NEW EXTERIOR WALLS ONLY)

EXTERIOR WALL TYPE NUMBER, REFER TO DETAILS

NOTE: R-VALUE MINIMUMS SHALL BE MAINTAINED AS INDICATED IN THE EXTERIOR WALL TYPE DETAILS.

EXTERIOR WALL TYPE INDICATOR (NEW EXTERIOR WALLS ONLY)

EXTERIOR WALL TYPE NUMBER, REFER TO DETAILS

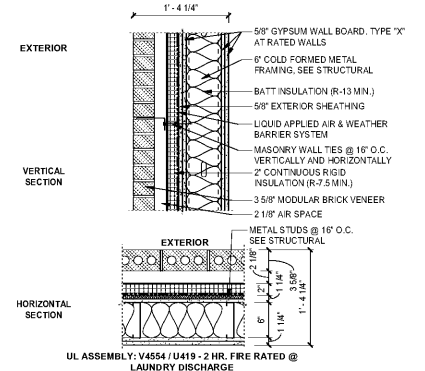
INDICATES "EXTERIOR" WALL TYPE INDICATOR (NEW EXTERIOR WALLS ONLY)

EXTERIOR WALL TYPE NUMBER, REFER TO DETAILS

NOTE: R-VALUE MINIMUMS SHALL BE MAINTAINED AS INDICATED IN THE EXTERIOR WALL TYPE DETAILS.

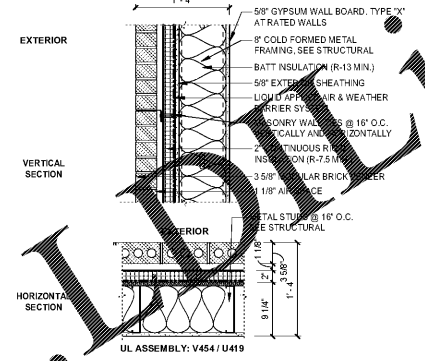
EXTERIOR WALL TYPE INDICATOR (NEW EXTERIOR WALLS ONLY)

EXTERIOR WALL TYPE NUMBER, REFER TO DETAILS



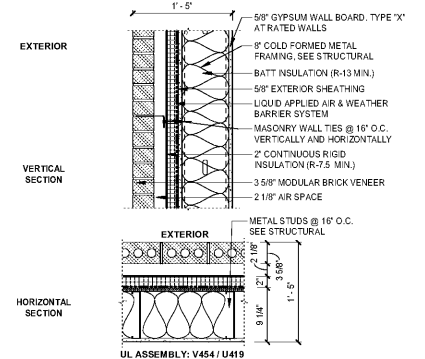
UL ASSEMBLY: V454 / U419 - 2 HR. FIRE RATED @ LAUNDRY DISCHARGE

EXTERIOR WALL TYPE 'EXT-4'



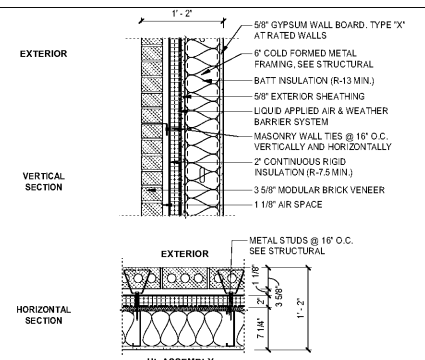
UL ASSEMBLY: V454 / U419

EXTERIOR WALL TYPE 'EXT-2A'



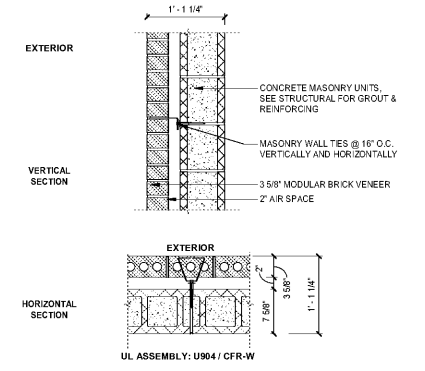
UL ASSEMBLY: V454 / U419

EXTERIOR WALL TYPE 'EXT-2'



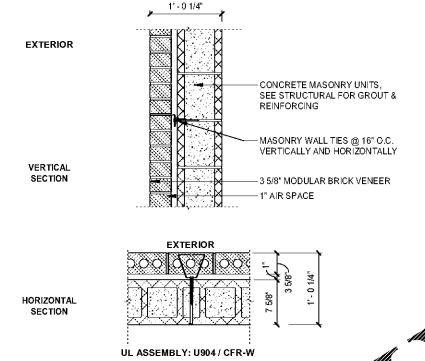
UL ASSEMBLY: V454 / U419 TYP. @ RISER ROOM

EXTERIOR WALL TYPE 'EXT-1A'



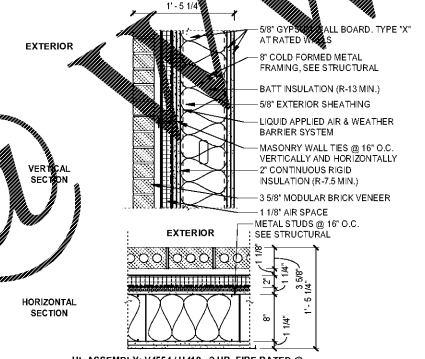
UL ASSEMBLY: U904 / CFR-W

EXTERIOR WALL TYPE 'EXT-7A'



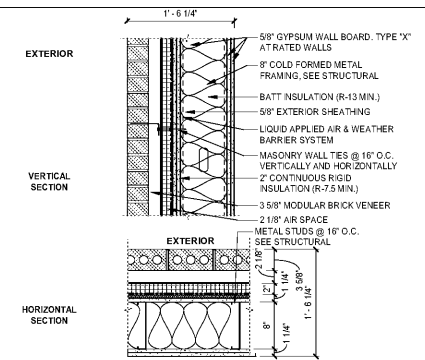
UL ASSEMBLY: U904 / CFR-W

EXTERIOR WALL TYPE 'EXT-7'



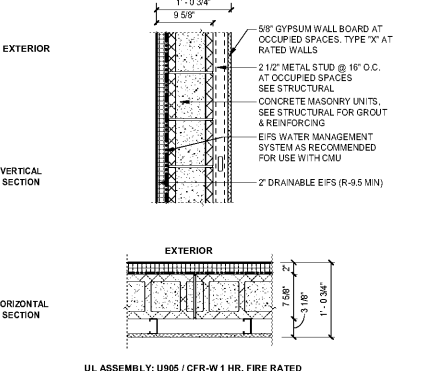
UL ASSEMBLY: V454 / U419 - 2 HR. FIRE RATED @ LAUNDRY DISCHARGE

EXTERIOR WALL TYPE 'EXT-4B'



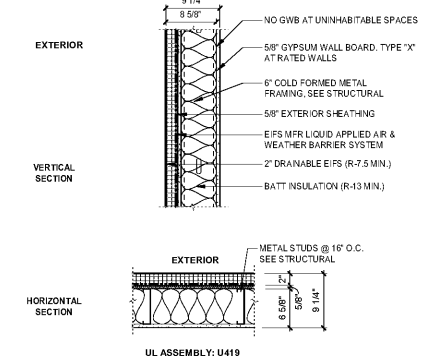
UL ASSEMBLY: V454 / U419 - 2 HR. FIRE RATED @ LAUNDRY DISCHARGE

EXTERIOR WALL TYPE 'EXT-4A'



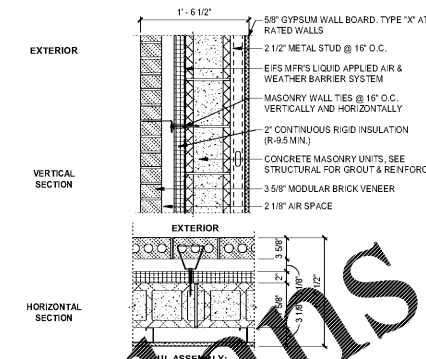
UL ASSEMBLY: U905 / CFR-W 1 HR. FIRE RATED

EXTERIOR WALL TYPE 'EXT-13'



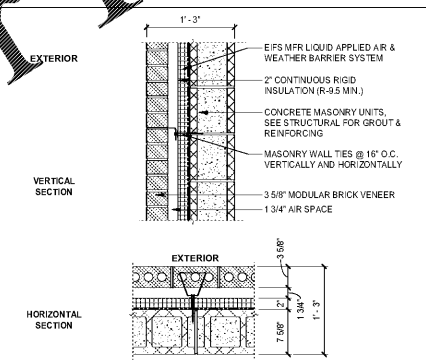
UL ASSEMBLY: U419

EXTERIOR WALL TYPE 'EXT-12'



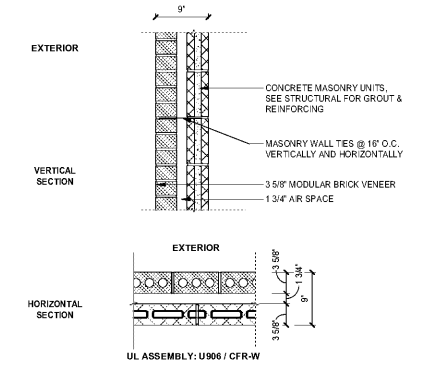
UL ASSEMBLY: U906 / CFR-W TYP. @ RISER ROOM

EXTERIOR WALL TYPE 'EXT-11'



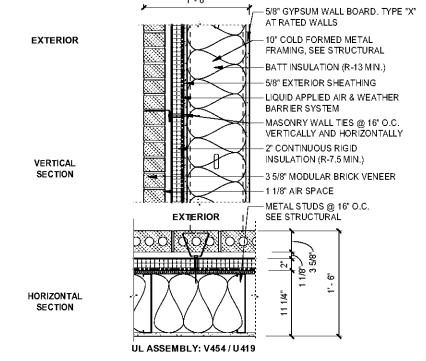
UL ASSEMBLY: U906 / CFR-W TYP. @ FRONT TOWER U906 - 2 HR. FIRE RATED @ EAST / WEST STAIR

EXTERIOR WALL TYPE 'EXT-9'



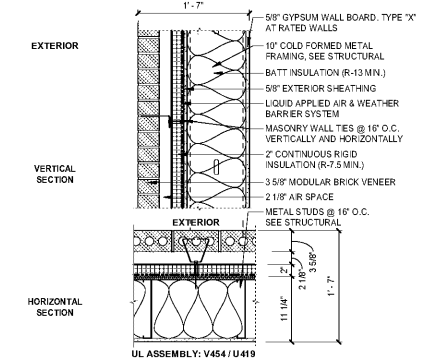
UL ASSEMBLY: U906 / CFR-W

EXTERIOR WALL TYPE 'EXT-16'



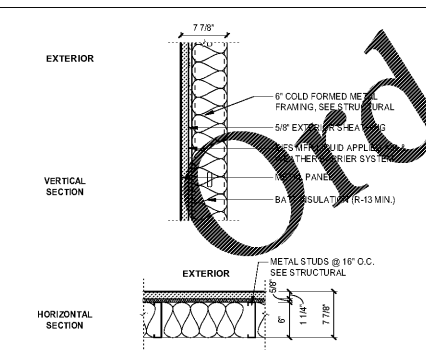
UL ASSEMBLY: V454 / U419

EXTERIOR WALL TYPE 'EXT-15A'



UL ASSEMBLY: V454 / U419

EXTERIOR WALL TYPE 'EXT-15'



UL ASSEMBLY: V454 / U419

EXTERIOR WALL TYPE 'EXT-14'