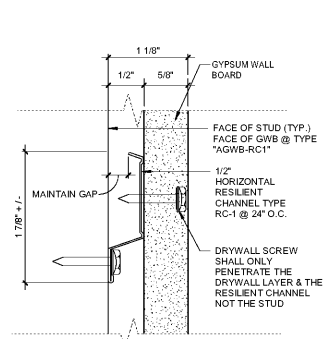
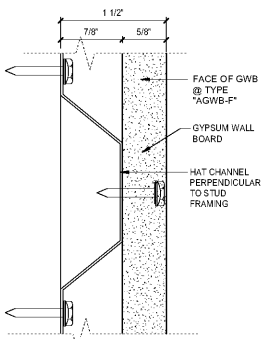


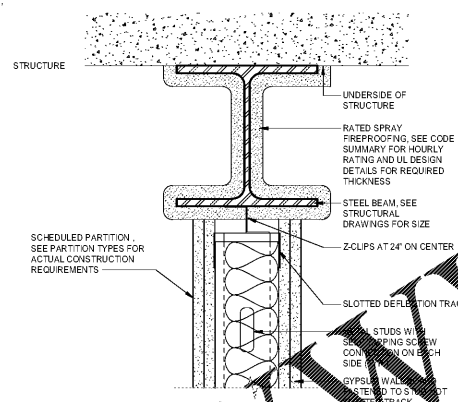
6 OPERABLE WALL PARTITION SECTION
SCALE: 3" = 1'-0"



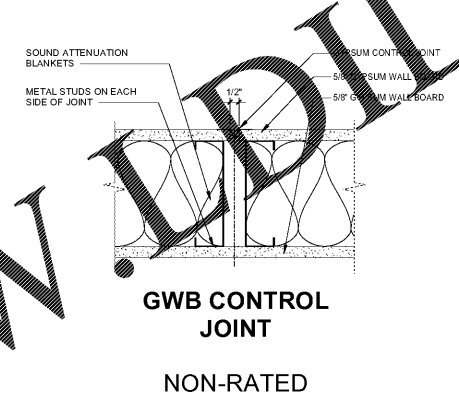
RESILIENT CHANNEL
ADDITIONAL PARTITION TYPE "AGWB-RC1"



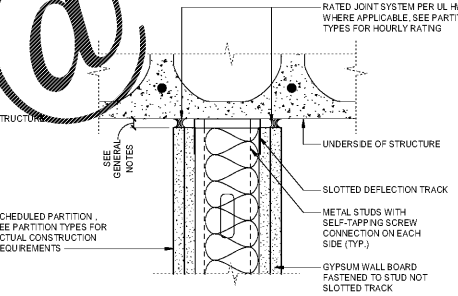
FURRING CHANNEL
ADDITIONAL PARTITION TYPE "AGWB-F"



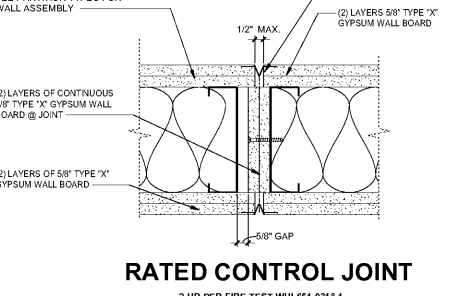
5 TOP OF TRACK AT BEAM
SCALE: 3" = 1'-0"



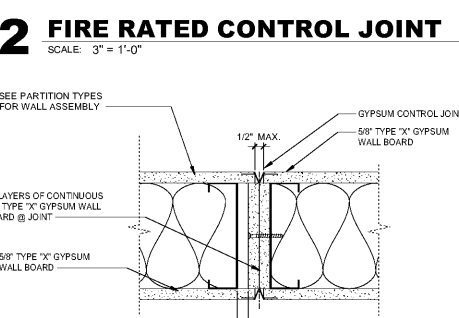
3 NON-RATED CONTROL JOINT
SCALE: 3" = 1'-0"



4 TOP OF TRACK NON-BEARING
SCALE: 3" = 1'-0"



RATED CONTROL JOINT
2-HR PER FIRE TEST WH-651-0318.1

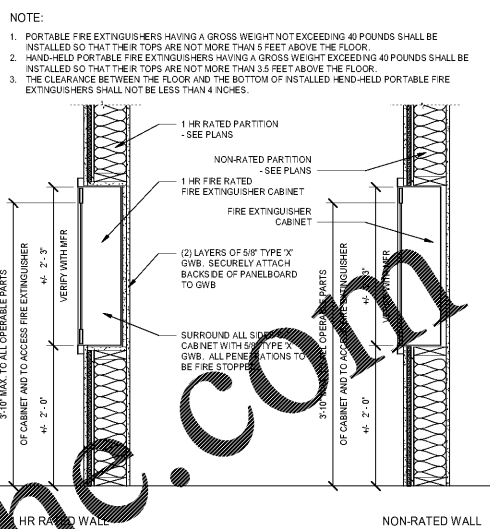


2 FIRE RATED CONTROL JOINT
SCALE: 3" = 1'-0"

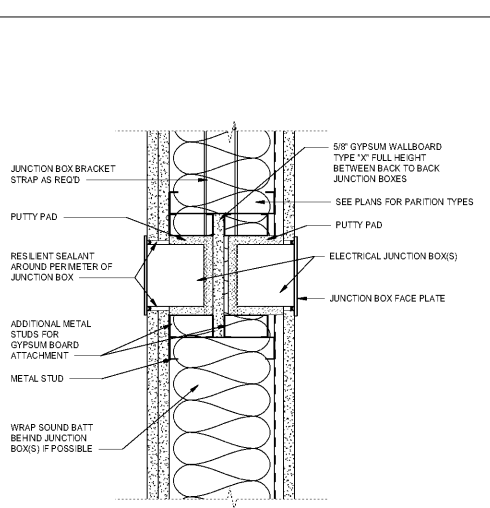


RATED CONTROL JOINT
1-HR PER FIRE TEST WH-647-3024

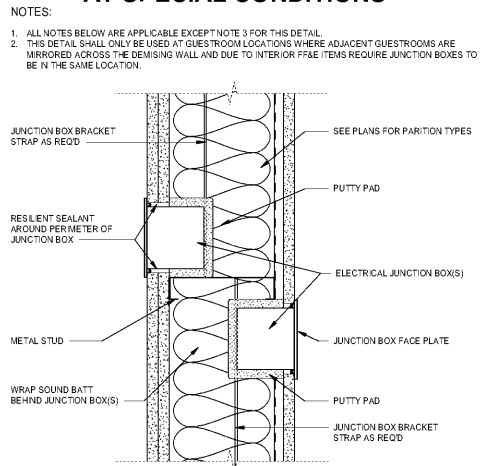
1 FIRE RATED CONTROL JOINT
SCALE: 3" = 1'-0"



FIRE EXTINGUISHER CABINET DETAILS



J-BOX DETAIL AT SPECIAL CONDITIONS



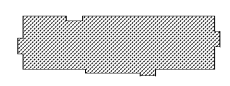
TYPICAL J-BOX DETAIL AT INTERIOR PARTITIONS

NOTE:
1. PORTABLE FIRE EXTINGUISHERS HAVING A GROSS WEIGHT NOT EXCEEDING 40 POUNDS SHALL BE INSTALLED SO THAT THEIR TOPS ARE NOT MORE THAN 5 FEET ABOVE THE FLOOR.
2. HAND-HELD PORTABLE FIRE EXTINGUISHERS HAVING A GROSS WEIGHT EXCEEDING 40 POUNDS SHALL BE INSTALLED SO THAT THEIR TOPS ARE NOT MORE THAN 3.5 FEET ABOVE THE FLOOR.
3. THE CLEARANCE BETWEEN THE FLOOR AND THE BOTTOM OF INSTALLED HAND-HELD PORTABLE FIRE EXTINGUISHERS SHALL NOT BE LESS THAN 4 INCHES.



HOME 2 SUITES BELMONT
HAWLEY AVE
BELMONT, NC 28012

KEY PLAN



Revisions		
#	Date	Description

Project Number: 18021
Issued for: CONSTRUCTION
Issue Date: 2019-06-07

DRAWING TITLE
INTERIOR PARTITION MISC. DETAILS

SHEET NUMBER
G.202