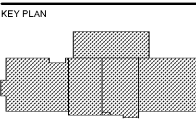




Ragone Architecture & Design, PLLC
145A Scalespark Road, Charlotte, NC 28209
T: 704.372.0116 www.rad-arch.com



HOME 2 SUITES BELMONT
HAWLEY AVE
BELMONT, NC 28012



Revisions table with columns: #, Date, Description

Project Number: 18021
Issued for: CONSTRUCTION
Issue Date: 2019-06-07

DRAWING TITLE
INTERIOR PARTITION TYPES AND MISC. DETAILS

SHEET NUMBER
G.201

PARTITION TYPE NOTES:

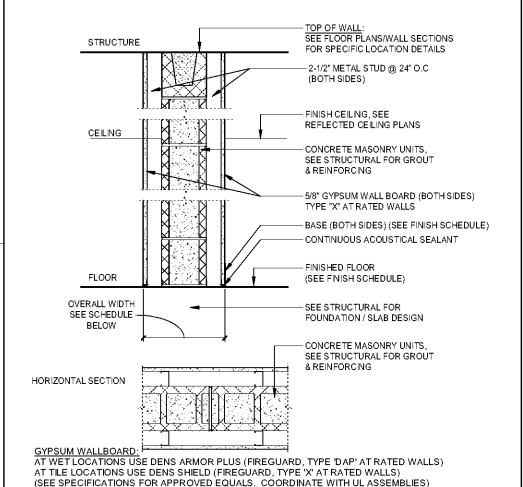
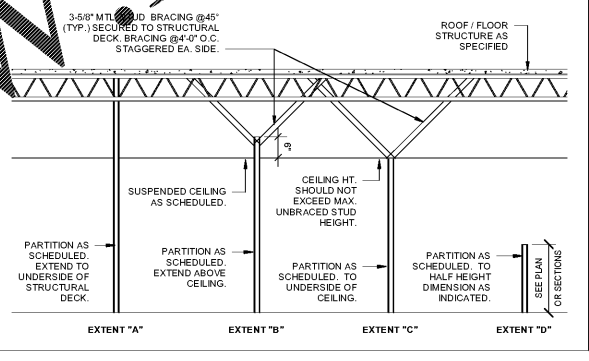
- 1. UNLESS OTHERWISE NOTED, ALL DIMENSIONS ARE TO FACE OF GYPSUM WALL BOARD FINISH, FACE OF MASONRY, OR FACE OF CONCRETE.
2. PROVIDE WOOD BLOCKING FOR ALL WALL-MOUNTED ITEMS IN STUD WALLS INCLUDING, BUT NOT LIMITED TO ARCHITECTURAL WOODWORK, FINISH CARRYOVER, RAILINGS, HARDWARE, AT DOOR STOPS, TOILET AND BATH ACCESSORIES, AND SIMILAR MOUNTED ITEMS PROVIDE WOOD BLOCKING FOR ALL WALL-MOUNTED ITEMS IN STUD WALLS INCLUDING, BUT NOT LIMITED TO ARCHITECTURAL WOODWORK, FINISH CARRYOVER, RAILINGS, HARDWARE, AT DOOR STOPS, TOILET AND BATH ACCESSORIES, AND SIMILAR MOUNTED ITEMS.
3. SEE STRUCTURAL FOR REINFORCEMENT OF MASONRY WALLS AND INTERIOR SHEAR WALL REQUIREMENTS.
4. SEE FINISH SCHEDULE, INTERIOR ELEVATIONS, AND INTERIOR DETAILS FOR ADDITIONAL WALL FINISHES AND INFORMATION.
5. INTERSECTING PARTITIONS SHALL BE CONSTRUCTED SO THAT THE HIGHER PRIORITY PARTITION IS CONSTRUCTED FIRST. CONTINUOUS AND ABUTTED BY THE LOWER PRIORITY PARTITION. THE FOLLOWING PARTITION PRIORITIES ARE LISTED FROM HIGHEST TO LOWEST. SEE PLAN DETAILS AND PARTITION TYPE DETAILS FOR ADDITIONAL INFORMATION. INTERSECTING PARTITIONS SHALL BE CONSTRUCTED SO THAT THE HIGHER PRIORITY PARTITION IS CONSTRUCTED FIRST. CONTINUOUS AND ABUTTED BY THE LOWER PRIORITY PARTITION. THE FOLLOWING PARTITION PRIORITIES ARE LISTED FROM HIGHEST TO LOWEST. SEE PLAN DETAILS AND PARTITION TYPE DETAILS FOR ADDITIONAL INFORMATION.
(5) 2-HR FIRE RATED SHAFT WALL
(4) 2-HR FIRE RATED PARTITION
(3) 1-HR FIRE RATED SHAFT WALL
(2) 1-HR FIRE RATED PARTITION
(1) SMOKE PARTITION
(0) NON-RATED PARTITION
6. INTERIOR FIRE RATED PARTITIONS INTERSECTING EXTERIOR RATED WALLS SHALL CONTINUE TO THE BACK EXTERIOR SHEATHING FOR MASONRY.
7. FOR ALL FIRE RATED WALLS THAT GO THROUGH STENCIL THE FOLLOWING NOTE AT THE FLOOR SPACE ON BOTH SIDES OF THE RATED WALL WITH PERMANENT PAINT, FIRE AND SMOKE BARRIERS, FROM "ALL OPENINGS" NOTE SHOULD BE LOCATED EVERY 15-FEET ON CENTER MINIMUM ALONG ENTIRE WALL WITH 2-INCH HIGH LETTERS.
FIRE RATED PARTITION TYPE SHALL TERMINATE AT FLOOR ASSEMBLIES CARRYING THE SAME FIRE RATING. REFER TO THE LIFE SAFETY PLANS FOR REQUIRED FIRE RATINGS.
AT ALL INTERIOR NON-BEARING METAL STUD PARTITION WALLS, HOLD STUD A MINIMUM OF 1/2-INCH SHORTRUNNER TRACK AND PROVIDE SLIDE CONNECTION AS DETAILED ON THE PARTITION DETAILS.
8. PARTITION TYPES WITHIN TOILET ROOMS AND OTHER WET AREAS SHALL HAVE MOISTURE RESISTANT GYPSUM WALL BOARD UNLESS OTHERWISE INDICATED.
9. PARTITION TYPE TAG NOMENCLATURE IS PER THE FOLLOWING:
10. SEE NEXT SHEET FOR MORE PARTITION DETAILS AND INFORMATION.

INTERIOR PARTITION METAL STUD SPAN CHART FOR BRACING



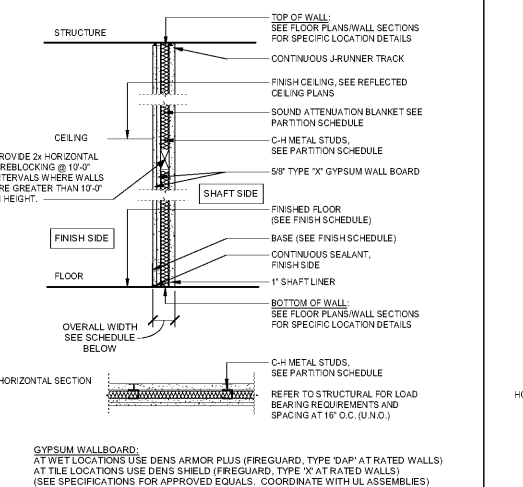
- NOTES:
1. Maximum Unbraced Span is defined as the total span between the top of finished floor and the underside of structural ceiling or appropriate lateral brace. See typical bracing diagram.
2. These spans are calculated on one layer of gypsum board on each side of a metal stud partition. These Maximum Unbraced Spans must be reduced by 2'-0" if only one side of 5/8" gypsum board is used.
3. The maximum unbraced span of any kind shall be considered appropriate lateral bracing for any partition construction and shall reduce the measurement of unbraced span.
4. In no case shall the Maximum Unbraced Spans exceed the requirements of ASTM C-754.

TYPICAL PARTITION HEIGHTS & BRACING



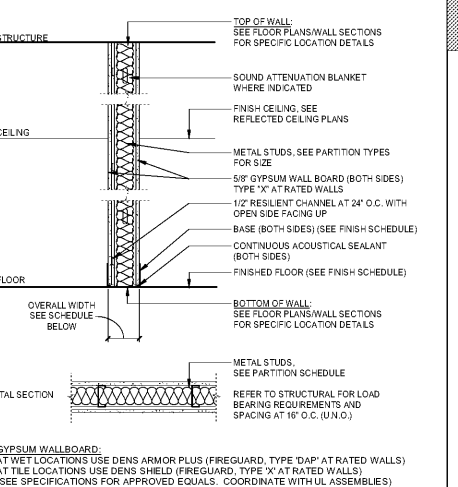
PARTITION TYPE 'M2'
PARTITION SCHEDULE (M2-TYPES)

PARTITION REFERENCE	OVERALL WIDTH	STUD / FURRING SIZE	LAYERS	SOUND ATTENUATION	STC RATING	FIRE RATING	UL DETAIL NUMBER
M2h. 3.1	1'-1 7/8"	2 1/2"	NONE	NONE	62	1-HR	U910



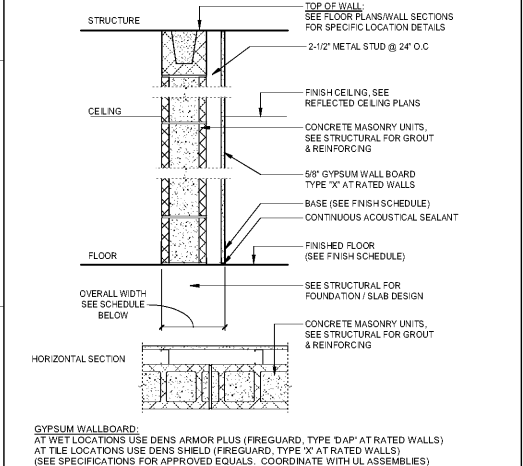
PARTITION TYPE 'SW3'
PARTITION SCHEDULE (SW3-TYPES)

PARTITION REFERENCE	OVERALL WIDTH	STUD / FURRING SIZE	LAYERS	SOUND ATTENUATION	STC RATING	FIRE RATING	UL DETAIL NUMBER
SW3h. 2.2	3'-3 3/4"	1 1/2"	NONE	NONE	43	2-HR	U415



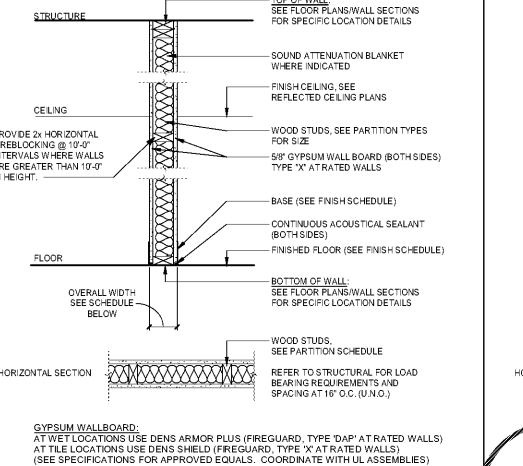
PARTITION TYPE 'S3'
PARTITION SCHEDULE (S3-TYPES)

PARTITION REFERENCE	OVERALL WIDTH	STUD / FURRING SIZE	LAYERS	SOUND ATTENUATION	STC RATING	FIRE RATING	UL DETAIL NUMBER
S3h. 5.0	8'-0"	6"	NONE	NONE	42	0-HR	U419
S3h. 3.0	6"	3 5/8"	3 1/2"	NONE	48	0-HR	U419
S3h. 3.1	6"	3 5/8"	3 1/2"	NONE	48	1/2-HR	U419
S3h. 6.0	8'-0"	6"	NONE	NONE	50	0-HR	U419
S3h. 6.1	8'-0"	6"	NONE	NONE	50	1-HR	U419



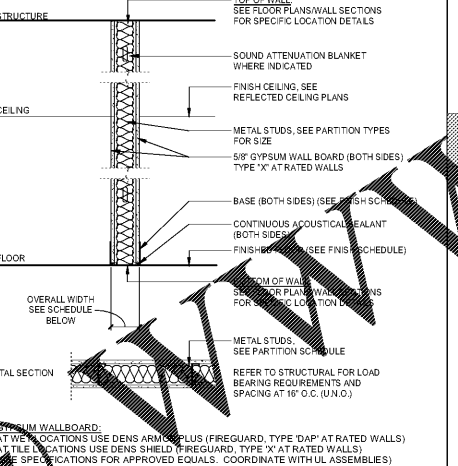
PARTITION TYPE 'M1'
PARTITION SCHEDULE (M1-TYPES)

PARTITION REFERENCE	OVERALL WIDTH	STUD / FURRING SIZE	LAYERS	SOUND ATTENUATION	STC RATING	FIRE RATING	UL DETAIL NUMBER
M1h. 8.1	10'-3 3/4"	2 1/2"	NONE	NONE	55	1-HR	U910
M1h. 8.2	10'-3 3/4"	2 1/2"	NONE	NONE	55	2-HR	U914



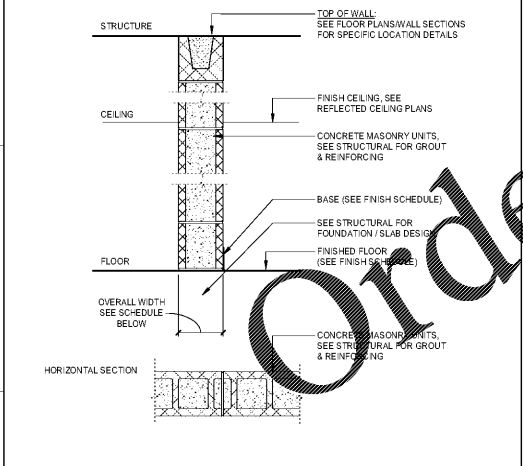
PARTITION TYPE 'W2'
PARTITION SCHEDULE (W2-TYPES)

PARTITION REFERENCE	OVERALL WIDTH	STUD / FURRING SIZE	LAYERS	SOUND ATTENUATION	STC RATING	FIRE RATING	UL DETAIL NUMBER
W2h. 6.0	6'-3 3/4"	5 1/2"	NONE	NONE	35	1-HR	N/A



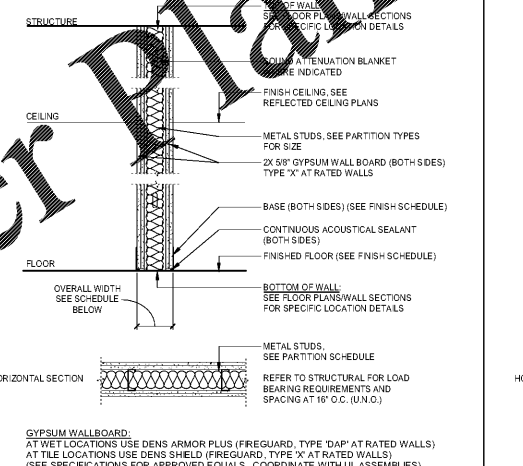
PARTITION TYPE 'S2'
PARTITION SCHEDULE (S2-TYPES)

PARTITION REFERENCE	OVERALL WIDTH	STUD / FURRING SIZE	LAYERS	SOUND ATTENUATION	STC RATING	FIRE RATING	UL DETAIL NUMBER
S2h. 2.0	4'-7 7/8"	3 5/8"	3 1/2"	NONE	45	0-HR	U419
S2h. 3.1	4'-7 7/8"	3 5/8"	3 1/2"	NONE	45	1-HR	U419
S2h. 3.0	4'-7 7/8"	3 5/8"	NONE	NONE	40	0-HR	N/A
S2h. 3.1	4'-7 7/8"	3 5/8"	NONE	NONE	40	1-HR	U419
S2h. 6.0	7'-1 1/4"	6"	NONE	NONE	42	0-HR	N/A



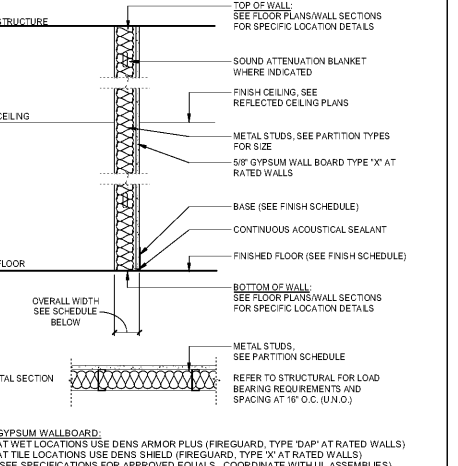
PARTITION TYPE 'M0'
PARTITION SCHEDULE (M0-TYPES)

PARTITION REFERENCE	OVERALL WIDTH	STUD / FURRING SIZE	LAYERS	SOUND ATTENUATION	STC RATING	FIRE RATING	UL DETAIL NUMBER
M0h. 8.1	7'-5 7/8"	0"	NONE	NONE	48	1-HR	U910
M0h. 8.2	7'-5 7/8"	0"	NONE	NONE	48	2-HR	U914



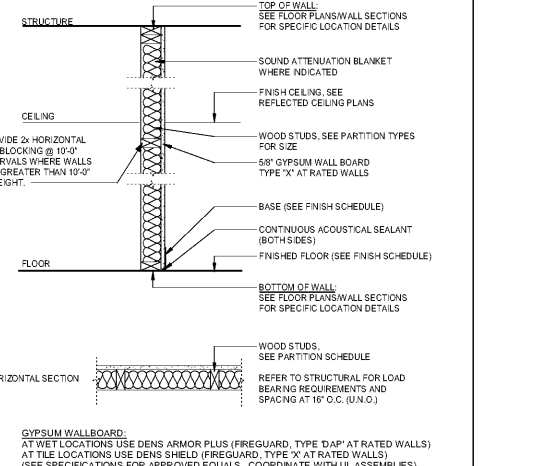
PARTITION TYPE 'S4'
PARTITION SCHEDULE (S4-TYPES)

PARTITION REFERENCE	OVERALL WIDTH	STUD / FURRING SIZE	LAYERS	SOUND ATTENUATION	STC RATING	FIRE RATING	UL DETAIL NUMBER
S4h. 3.2	6'-1 1/8"	3 5/8"	NONE	NONE	48	2-HR	U419



PARTITION TYPE 'S1'
PARTITION SCHEDULE (S1-TYPES)

PARTITION REFERENCE	OVERALL WIDTH	STUD / FURRING SIZE	LAYERS	SOUND ATTENUATION	STC RATING	FIRE RATING	UL DETAIL NUMBER
S1h. 3.0	4'-1 1/4"	3 5/8"	3 1/2"	NONE	56	0-HR	U419
S1h. 2.0	3'-1 1/8"	2 1/2"	NONE	NONE	27	0-HR	N/A
S1h. 3.0	4'-1 1/4"	3 5/8"	NONE	NONE	27	0-HR	N/A
S1h. 3.1	4'-1 1/4"	3 5/8"	NONE	NONE	27	1-HR	N/A
S1h. 6.0	6'-5 7/8"	6"	NONE	NONE	27	0-HR	N/A



PARTITION TYPE 'W4'
PARTITION SCHEDULE (W4-TYPES)

PARTITION REFERENCE	OVERALL WIDTH	STUD / FURRING SIZE	LAYERS	SOUND ATTENUATION	STC RATING	FIRE RATING	UL DETAIL NUMBER
W4h. 6.0	6'-1 1/8"	5 1/2"	NONE	NONE	31	0	N/A