



PHILLIPS architects + engineers

770 394 1616

CONSULTANT



SEAL



ISSUE & REVISION RECORD

#	DATE	DESCRIPTION
1	05/30/2019	PERMIT SUBMITTAL

This document is the property of Phillips Engineering, PC and is intended for use only for the project as indicated below. Any reuse without the prior written consent of Phillips Engineering, PC is prohibited.

TENANT

PROJECT

THE PROMENADE

D'BERVILLE, MS.

CLIENT

CBL PROPERTIES

300 Oliver Street, 2000th Floor, Atlanta, Georgia 30303-1502
404.525.0000 / 404.525.0002 / 2000thFloor@CBLProperties.com

PHILLIPS JOB NUMBER 1925401

ISSUE DATE 05/30/2019

DRAWN BY/CHECKED BY MTC / SWL

DRAWING TITLE FLOOR PLAN, SCHEDULES, AND DETAILS - ELECTRICAL

SHEET NUMBER

E-1.1

THE PALISADES
5901 PEACHTREE DUNWOODY RD
BUILDING A SUITE 450
ATLANTA, GEORGIA 30328

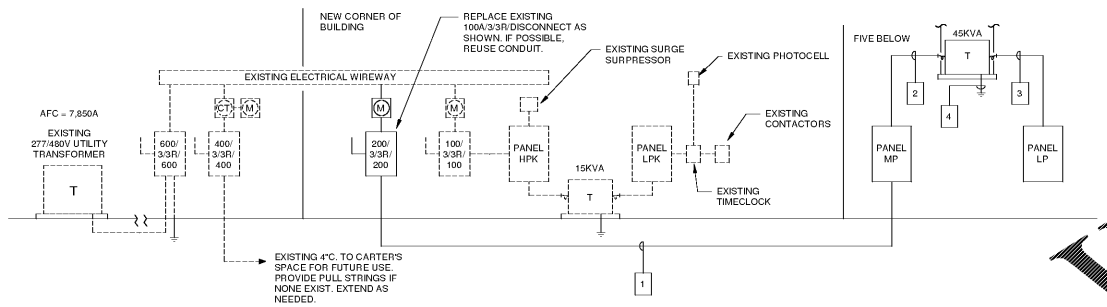
GENERAL NOTES:

- OBTAIN MANUFACTURER'S DATA ON ALL EQUIPMENT. THE DIMENSIONS OF WHICH MAY AFFECT INSTALLATION. USE THIS DATA TO COORDINATE PROPER SERVICE CHARACTERISTICS, ENTRY LOCATIONS, ETC., AND TO INSURE MINIMUM CLEARANCES ARE MAINTAINED.
- ANY WALLS, CEILINGS, EQUIPMENT, ETC., DAMAGED BY THE CONTRACTOR IN CONSTRUCTION OF THIS PROJECT SHALL BE REPAIRED, RESTORED AND/OR REPLACED BY THE CONTRACTOR TO ITS ORIGINAL CONDITION, OR TO PERFORM ITS INTENDED FUNCTION, AT NO ADDITIONAL COST TO OWNER.
- ALL WIRES SHALL BE TERMINATED WITHIN ELECTRICAL BOXES. NOT LEFT LOOSE.
- ELECTRICAL CONTRACTOR SHALL ENSURE INSTALLED OCCUPANCY SENSORS PROVIDE A FULL RANGE COVERAGE WITHIN THE CONTROLLED AREA.
- ALL JUNCTION BOXES AND RECEPTACLES SHALL INDICATE THE CIRCUITS CONTAINED WITHIN. PROVIDE TYPED LABEL AND PERMANENTLY AFFIX TO COVERPLATE.
- ALL CABLES WITHIN CEILING SHALL BE PLENUM RATED.
- CONTRACTOR CONFIRM WITH MANUFACTURER THAT LIGHT FIXTURES AND ASSOCIATED LIGHTING CONTROLS ARE COMPATIBLE WITH EACH OTHER.
- PROVIDE UNSWITCHED HOT TO ALL EMERGENCY, EGRESS, AND NIGHT LIGHT FIXTURES. FOR FIXTURES WITH BATTERY BALLASTS OR INVERTERS, THE UNSWITCHED HOT TO BALLAST OR INVERTER, NOT THE FIXTURE ITSELF.
- SEE ARCHITECTURAL DRAWINGS FOR ANY UNLISTED MOUNTING HEIGHTS FOR LIGHTS, DEVICES, AND EQUIPMENT.
- CONTRACTOR TO COORDINATE ELECTRICAL SERVICE PROVISIONS WITH POWER COMPANY PRIOR TO BID AND PURCHASE IF APPLICABLE.
- ALL EXISTING CONDITIONS SHALL BE FIELD VERIFIED BY THE CONTRACTOR. REPAIR, CLEAN, AND REPLACE EXISTING EQUIPMENT, DEVICES, AND CONDUIT AS NEEDED.
- PROVIDE PULL STRINGS IN ALL EMPTY CONDUITS.
- PAINT EXTERIOR ELECTRICAL GEAR TO MATCH EXTERIOR FINISHES OR TO MEET CODE.
- RECEPTACLES INSTALLED ON EXTERIOR OF BUILDING MUST BE RATED AS REQUIRED BY JURISDICTION.
- CONTRACTOR SHALL PROVIDE 3/4" C. WITH PULL STRING TO PIV FROM FACP WHERE REQUIRED. SEE CIVIL DRAWINGS FOR LOCATION.
- PROVIDE TAMPER RESISTANT RECEPTACLES WHERE REQUIRED BY 2017 NEC.
- (4) WEEKS PRIOR TO SUBSTANTIAL COMPLETION, CONTRACTOR SHALL NOTIFY OWNER TO SELECT FIRE ALARM MONITORING COMPANY AND INITIATE TELEPHONE SERVICE FOR FIRE ALARM MONITORING SYSTEM.

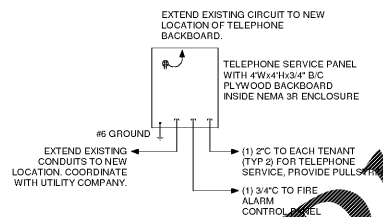
KEYED NOTES:

- PROVIDE JUNCTION BOX FOR FUTURE TENANT SIGNAGE IF ONE DOES NOT ALREADY EXIST. ROUTE 3/4" C. TO FUTURE PANEL LOCATION. PROVIDE PULL STRINGS.
- APPROXIMATE LOCATION OF EXISTING FIRE ALARM CONTROL PANEL. CLEAN AND REPAIR AS NEEDED. IF EXISTING PANEL NEEDS TO BE REPLACED, PROVIDE ADDRESSABLE AUTOGALLER TO MONITOR THE SPRINKLER SYSTEM AND AUTOMATICALLY CALL THE MONITORING COMPANY IN CASE OF FLOW OR ALARM. PROVIDE PULL STATION AND AUDIO VISUAL DEVICE BESIDE PANEL. PROVIDE SMOKE DETECTOR ABOVE PANEL. PROVIDE FLOW AND TAMPER SWITCHES AS REQUIRED FOR SPRINKLER SYSTEM. EXTEND (1) 3/4" C. FROM PANEL TO BUILDING TELEPHONE BACKBOARD FOR PHONE LINE. WIRE 2#12 (G), 3/4" C. TO CIRCUIT AS SHOWN. SILENT KNIGHT OR EQUAL.
- BUILDING ELECTRICAL SERVICE. REFER TO 2E-1.1 FOR ADDITIONAL DETAILS.
- EXISTING 4" TENANT ELECTRICAL CONDUIT STUB LOCATION. REFER TO 2E-1.1 FOR ADDITIONAL DETAILS.
- TENANT TELEPHONE CONDUIT STUB LOCATION. REFER TO 2E-1.1 FOR ADDITIONAL DETAILS.
- NEW LOCATION OF BUILDING TELEPHONE SERVICE. REFER TO 3E-1.1 FOR ADDITIONAL DETAILS.
- RELOCATED EXISTING LIGHT FIXTURE. RECONNECT TO HPK'S.
- TIE TO EXISTING BUILDING LIGHTING CIRCUIT HPK'S.
- PROVIDE JUNCTION BOX FOR DOORBELL. COORDINATE EXACT LOCATION AND REQUIREMENTS WITH TENANT PRIOR TO ROUGH-IN.
- STUB CONDUIT AND PULL STRING INTO SPACE FOR FUTURE CONNECTION TO EXIT SIGN PER TENANT PLANS. COORDINATE EXACT LOCATION WITH TENANT PRIOR TO ROUGH-IN.

NOTES: ALL NEW EQUIPMENT SHOWN IN SOLID LINES AND ALL EXISTING EQUIPMENT SHOWN IN DASHED LINES. ALL DEVICES AND EQUIPMENT ON EXTERIOR OF BUILDING SHALL BE IN NEMA 3R ENCLOSURES, WHEREVER POSSIBLE. CONDUITS ENTERING OR EXITING GEAR SHALL BE INSTALLED BELOW THE GEAR, RATHER THAN TO THE SIDE OR ABOVE. METERS SHALL BE INSTALLED ABOVE DISCONNECTS WHEREVER POSSIBLE.



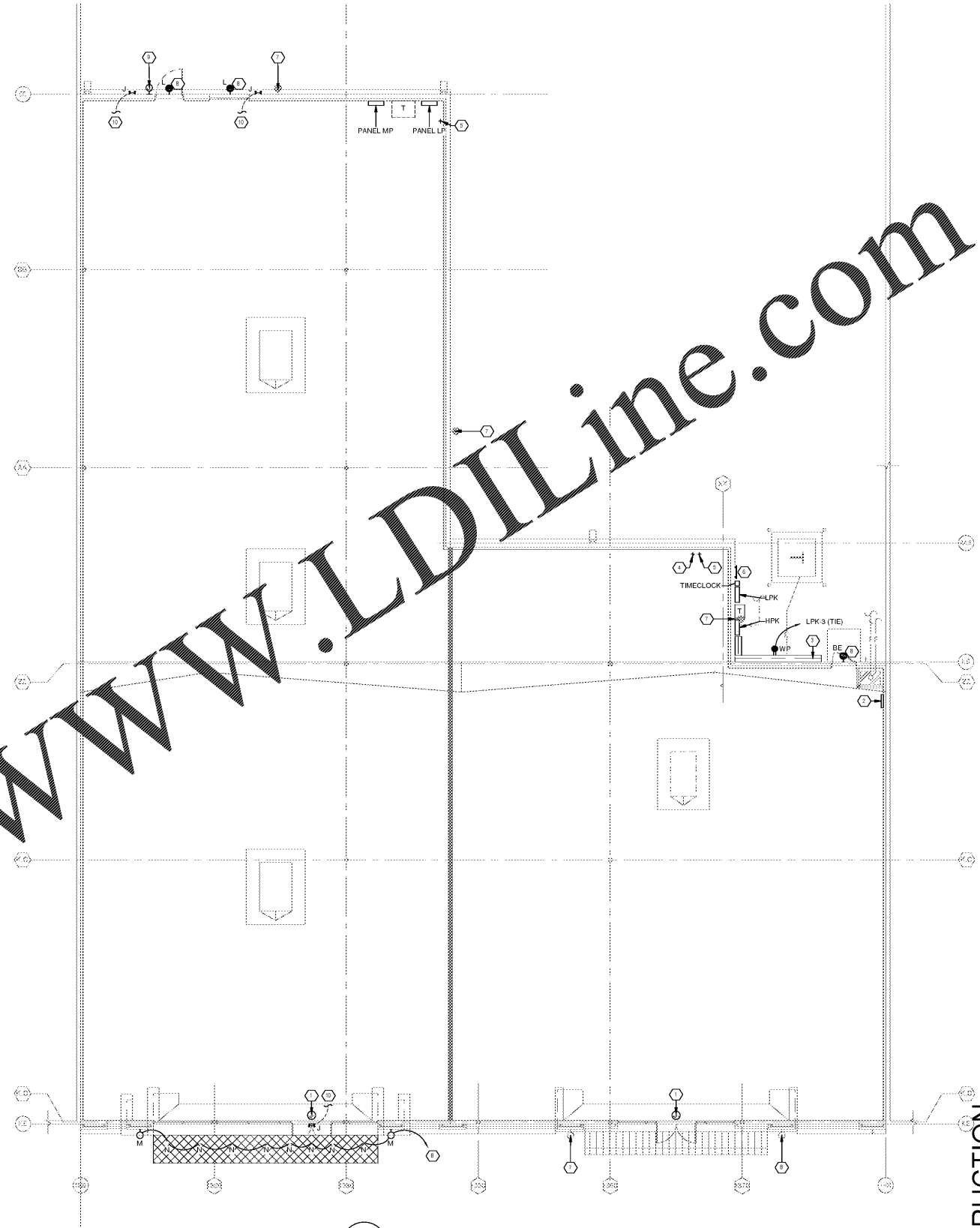
2 DETAIL - ELECTRICAL RISER DIAGRAM
E-1.1 NOT TO SCALE



3 DETAIL - TELECOMMUNICATION RISER
E-1.1 NOT TO SCALE

FEEDER SCHEDULE					
MARK	SETS	FEEDER	AMPS	NOTES	
1	1	4#3 (G), 2" C.	200A	1	
2	1	3#4, 1#6, 1-1/4" C.	70A	-	
3	1	4#1, 1#6 (G), 1-1/2" C.	15A	-	
4	1	1#6 (G), 3/4" C.	GND	-	

NOTES:
REUSE EXISTING CONDUIT IF POSSIBLE.



1 FLOOR PLAN - ELECTRICAL
E-1.1 1/8" = 1'-0"

LIGHTING FIXTURE SCHEDULE					
FIXTURE MARK	MANUFACTURER	MODEL	VOLTAGE	LAMP	DESCRIPTION
BE	COOPER	ISS AF 600 LED E1 T4 FT CWB	277 V	33W LED	LED WALL PACK TO BE ON AT NIGHT WITH EMERGENCY BATTERY BACKUP
J	EXITRONIX	RS12 50 0 W/ Z1212W	277 V	INCLUDED	DUAL HEAD REMOTE FIXTURE WITH BATTERY BACKUP. TIE TO EXIT SIGN AS SHOWN ON TENANT PLANS.
L	COOPER	XTOR2B W	277 V	18W LED	LED WALL PACK TO BE ON AT NIGHT
M	EELP	WP25 0-RL-0T-5K	277 V	52W LED	EXTERIOR LED SCENCE
N	COOPER	PRIS 30 D10 MW / PR18X4 MD MW	277 V	29W LED	CANOPY MOUNTED

Order Plans @ www.LDIDLine.com

ISSUED FOR CONSTRUCTION