

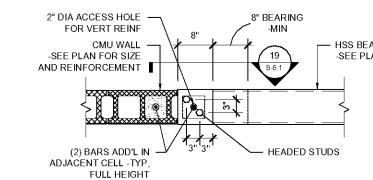
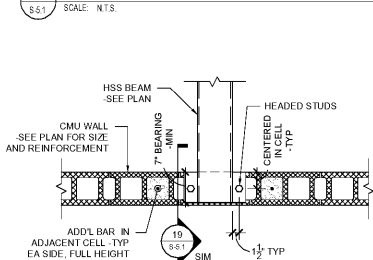
OPENING WIDTH		STEEL LINTELS		MASONRY LINTELS	
MIN	MAX	8" WALL***	12" WALL***	DEPTH	LINTEL DEPTH AND REINFORCING**
2'-0"	2'-6"	(2) L4x4x1/2	(2) L6x4x5/8 (SLV)	7 1/2"	(2) #5 BOT
2'-1"	3'-6"	(2) L4x4x1/2	(2) L6x4x5/8 (SLV)	7 1/2"	(2) #5 BOT
3'-7"	5'-0"	(2) L4x4x1/2	(2) L6x4x5/8 (SLV)	15 1/2"	(2) #5 BOT
5'-1"	6'-0"	(2) L4x4x1/2	(2) L6x4x5/8 (SLV)	15 1/2"	(2) #5 BOT
6'-7"	8'-0"	(2) L4x4x1/2	(2) L6x4x5/8 (SLV)	15 1/2"	(2) #5 BOT
8'-1"	10'-0"	(2) L6x4x5/8 (LLV)	(2) L6x4x5/8 (LLV)	23 1/2"	(2) #5 BOT
10'-1"	12'-0"	(2) L6x4x5/8 (LLV)	(2) L6x4x5/8 (LLV)	23 1/2"	(2) #5 BOT
12'-1"	14'-0"	(2) L7x4x5/8 (LLV)	(2) L6x4x5/8 (LLV)	23 1/2"	(2) #8 BOT
14'-1"	16'-0"	(2) L8x4x5/8 (LLV)	(2) L6x4x5/8 (LLV)	23 1/2"	(2) #8 BOT

BRICK LINTEL SCHEDULE	
CLEAR SPAN	LINTEL
6'-0"	L 4 x 4 x 1/2
6'-1" - 10'-0"	L 6 x 4 x 5/8 (LLV)
10'-1" - 12'-0"	L 7 x 4 x 5/8 (LLV)

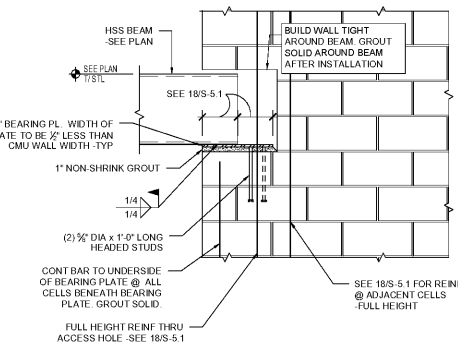
NOTE: BEAR LINTEL 6" MIN ON EITHER SIDE OF OPENING

- NOTES:
- USE EITHER STEEL LINTEL OR MASONRY LINTEL (SEE ARCH HEADER DETAILS).
 - THIS SCHEDULE TO BE USED UNLESS NOTED OTHERWISE.
 - DO NOT USE THIS SCHEDULE IF CONCENTRATED LOAD IS APPLIED TO LINTEL.
 - DO NOT USE THIS SCHEDULE IF HEIGHT OF MASONRY ABOVE OPENING IS LESS THAN HALF OF THE OPENING WIDTH.

17 NON-LOAD BEARING MASONRY LINTEL SCHEDULE



18 TYPICAL HSS BEAM ON CMU WALL

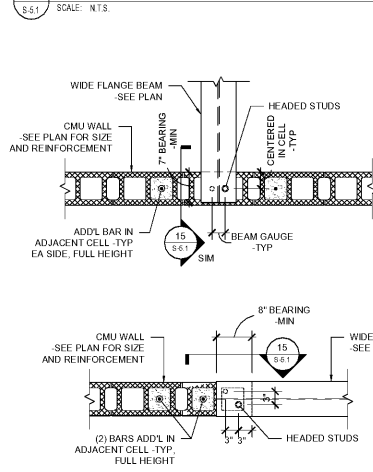


19 ELEVATION AT HSS BEAM ON CMU WALL

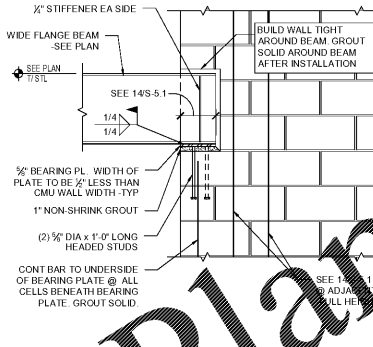
20 CMU PILASTER DETAIL



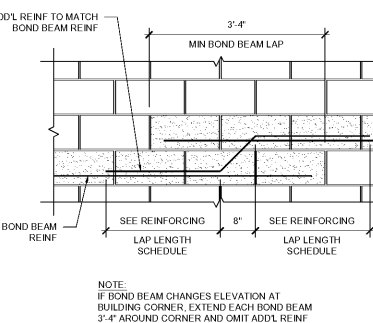
13 BRICK VENEER LINTEL SCHEDULE



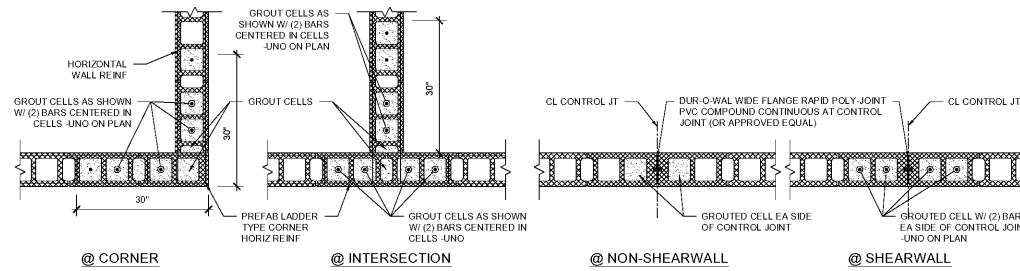
14 TYPICAL WIDE FLANGE BEAM ON CMU WALL



15 ELEVATION AT WIDE FLANGE BEAM ON CMU WALL

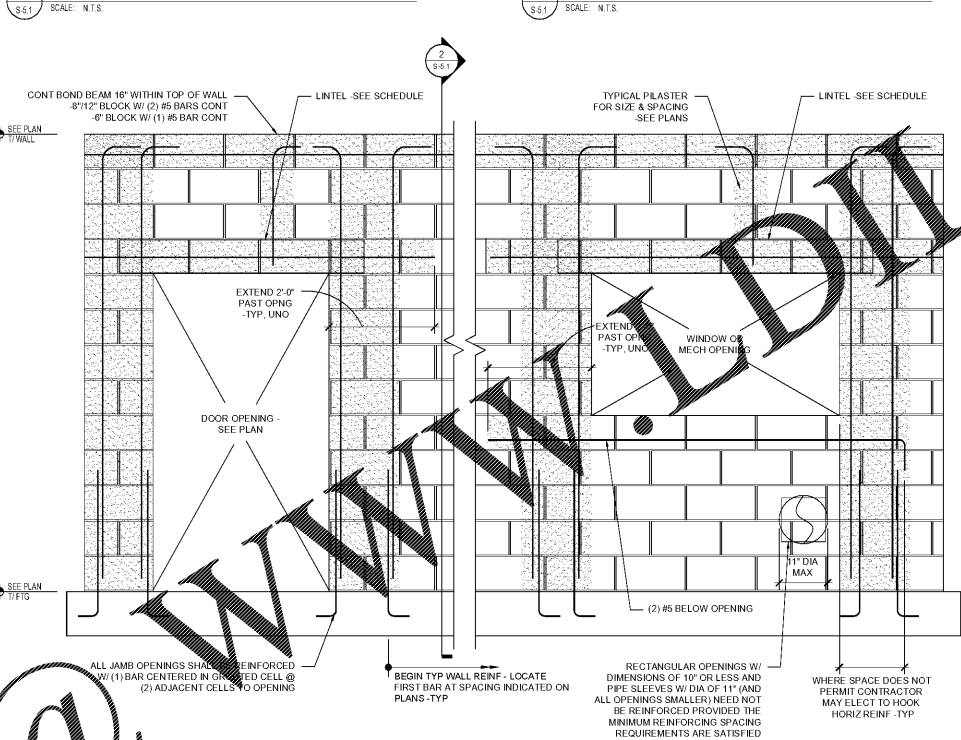


16 TYPICAL STEPPED BOND BEAM DETAIL



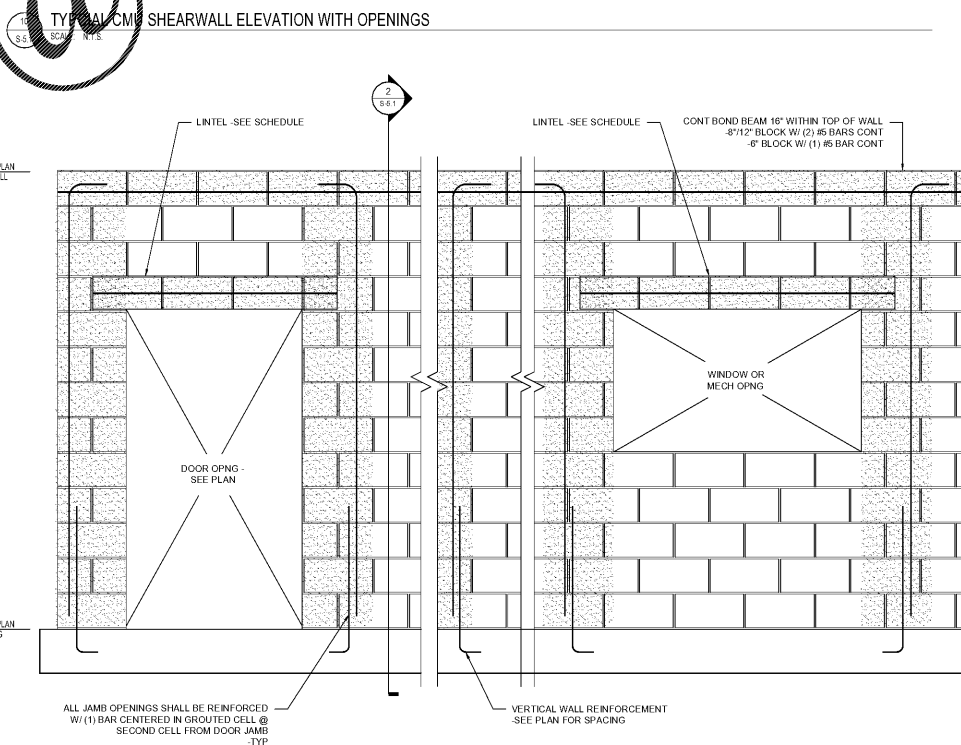
- NOTES:
- CORNER/TEE INTERSECTION REINFORCEMENT SHALL BE LAPPED WITH THE TYPICAL LADDER TYPE HORIZONTAL REINFORCEMENT AND EXTEND A MINIMUM OF 30" IN EACH DIRECTION AT THE INTERSECTION.
 - SEE GENERAL NOTES FOR SPACING OF TYPICAL HORIZONTAL REINFORCEMENT.

1 TYPICAL CMU WALL CORNER/TEE INTERSECTIONS



- NOTES:
- SEE GENERAL NOTES FOR SPACING GUIDELINES FOR CONTROL JOINTS IN INTERIOR/EXTERIOR CMU WALLS.
 - SEE ARCH FOR EXACT LOCATIONS OF CONTROL JOINTS.
 - DISCONTINUE HORIZONTAL REINFORCING AT CONTROL JOINT LOCATIONS.

2 TYPICAL CMU CONTROL JOINTS

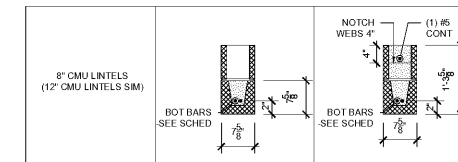


12 TYPICAL CMU NON-SHEARWALL ELEVATION WITH OPENINGS

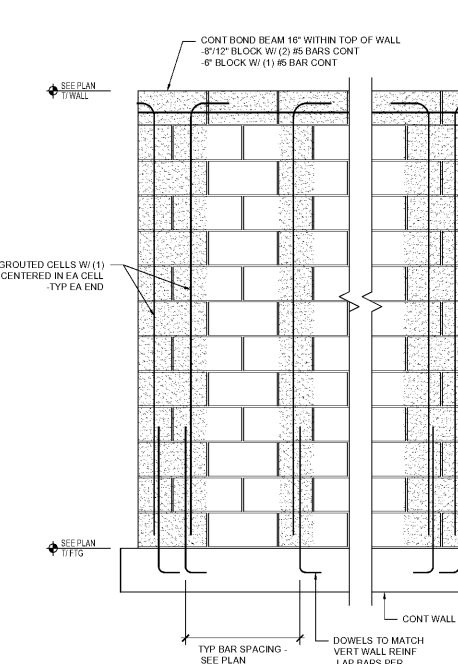
REINFORCING LAP LENGTH SCHEDULE*	
BAR SIZE	LAP LENGTH
#4	21"
#5	32" (6" CMU)
#6	26" (8" 1/2" CMU)

*LAP LENGTHS APPLY TO 8" OR 12" CMU WITH REINFORCING CENTERED IN CELL (UNO).

2 TYPICAL DETAIL OF LOW-LIFT REINFORCED MASONRY CONSTRUCTION



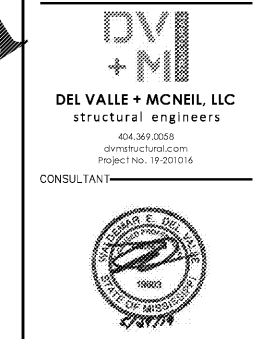
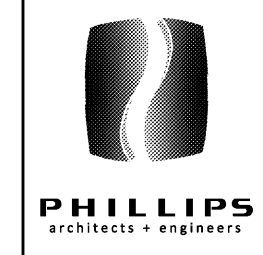
3 MASONRY LINTEL REINFORCING CONFIGURATIONS



4 TYPICAL CMU SHEARWALL ELEVATION



- LOW LIFT GROUTING PROCEDURE:
- CONSTRUCT WALL TO HEIGHT OF 5'-0".
 - ALLOW MORTAR TO SET SUFFICIENTLY TO WITHSTAND GROUT PRESSURE.
 - INSPECT UNITS FOR ALIGNMENT. CLEAN OUT CELLS TO BE FILLED.
 - FILL CELLS TO 1/2" BELOW TOP COURSE. DELAY 3 TO 5 MINUTES PRIOR TO CONSOLIDATING TO ALLOW WATER TO BE ABSORBED BY MASONRY.



ISSUE & REVISION RECORD

#	DATE	DESCRIPTION
1	05/30/2019	PERMIT SUBMITTAL

PROJECT: THE PROMENADE
 D'HERVILLE, MS.
 CLIENT:
 CBL PROPERTIES
 PHILLIPS JOB NUMBER: 1925-401
 ISSUE DATE: 05/30/2019
 DRAWN BY/CHECKED BY: MM
 DRAWING TITLE: TYPICAL MASONRY DETAILS
 SHEET NUMBER: S 5.1