

PHILLIPS architects + engineers

770.394.1616

CONSULTANT

SEAL

ISSUE & REVISION RECORD

DATE DESCRIPTION

05/30/2019 PERMIT SUBMITTAL

This document is the property of Phillips Architects, PC and is intended for the use of the client only. It is not to be distributed, copied, or otherwise used without the written consent of Phillips Architects, PC.

TENANT

PROJECT

THE PROMENADE

DIBERVILLE, MS.

CLIENT

CBL

CBL PROPERTIES

PHILLIPS JOB NUMBER 1925401

ISSUE DATE 05/30/2019

DRAWN BY/CHECKED BY MT/GC

DRAWING TITLE

TYPICAL DETAILS

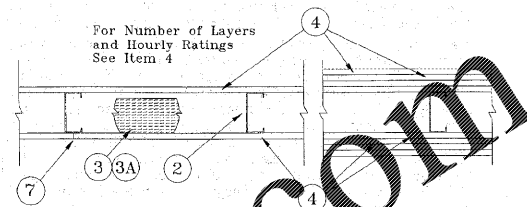
SHEET NUMBER

A-9.3

THE PALISADES

5901 PEACHTREE DUNWOODY RD BUILDING A, SUITE 150 ATLANTA, GEORGIA 30323

Design No. U419 Non Bearing Wall Ratings—1, 2, 3 or 4 Hr (See Items 3 & 4)



- 1. Floor and Ceiling Runners... 2. Steel Stud... 3. Batts and Blankets... 4. Wallboard, Gypsum...

Table with columns: Rating, Min Stud Depth, No. Of Layers And Thickness, Min Thickness Of Insulation (Item 3B)

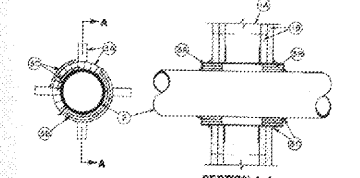
Canadian Gypsum Co.—1/2 in. thick Type C, WRC or IP-X2; 5/8 in. thick Type SCX, SHX, WRX, IP-X1, AR, C, WRC or IP-X2; 3/4 in. thick ULTRACODE or Type IP-X3.

- 5. Fasteners—(Not shown)—Type S or S-12 self-drilling, self-tapping steel screws used to attach panels to studs (Item 2) or furring channels (Item 6).

*Bearing the UL Classification Marking

System No. W-L-2004 (Formerly System No. 148)

F Rating — 2 Hr T Rating — 1 and 2 Hr L Rating At Ambient — 7 CFM/sq ft L Rating At 400 F — less than 1 CFM/sq ft



- 1. Floor Assembly... 2. Wall Assembly... 3. Nonmetallic Pipe or Conduit... 4. Firestop System...

Table with columns: Max Pipe or Conduit Diam., Annular Space, F Rating, T Rating

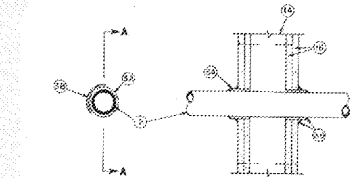
1. Floor Assembly — Min 4-1/2 in. thick reinforced lightweight or normal weight (100-150 pcf) structural concrete.

- 2. Wall Assembly — The 2-hr fire-rated gypsum wallboard/stud wall assembly shall be constructed of the materials and in the manner described in the individual U300 or U400 Series Wall or Partition Design in the UL Fire Resistance Directory...

*Bearing the UL Classification Marking

System No. W-L-2003 (Formerly System No. 148)

F Rating — 1 and 2 Hr T Rating — 1 and 2 Hr L Rating At Ambient — 7 CFM/sq ft L Rating At 400 F — less than 1 CFM/sq ft



- 1. Wall Assembly... 2. Pipe or Conduit... 3. Firestop System...

Table with columns: Max Pipe or Conduit Diam., Annular Space, F Rating, T Rating

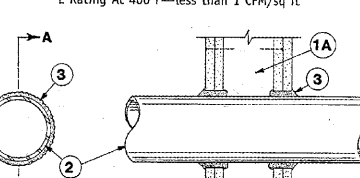
1. Wall Assembly — The 1 or 2-hr fire-rated gypsum wallboard/stud wall assembly shall be constructed of the materials and in the manner described in the individual U300 or U400 Series Wall or Partition Design in the UL Fire Resistance Directory...

- 2. Pipe or Conduit — Nom 12 in. diam. (or smaller) Schedule 40 (or heavier) steel pipe, nom 12 in. diam. (or smaller) service weight (or heavier) cast iron soil pipe, nom 12 in. diam. (or smaller) Class 50 (or heavier) ductile iron pipe, nom 6 in. diam. (or smaller) steel conduit, nom 4 in. diam. (or smaller) steel electrical metallic tubing, nom 6 in. diam. (or smaller) Type L or (or heavier) copper tubing or nom 1 in. diam. (or smaller) flexible steel conduit.

*Bearing the UL Classification Marking

System No. W-L-1001 (Formerly System No. 147)

F Rating — 1, 2, 3 and 4 Hr T Rating — 0, 1, 2, 3, and 4 Hr L Rating At Ambient — less than 1 CFM/sq ft L Rating At 400 F — less than 1 CFM/sq ft



- 1. Wall Assembly... 2. Pipe or Conduit... 3. Firestop System...

Table with columns: Max Pipe or Conduit Diam., Annular Space, F Rating, T Rating

1. Wall Assembly — The 1, 2, 3 or 4-hr fire-rated gypsum wallboard/stud wall assembly shall be constructed of the materials and in the manner described in the individual U300 or U400 Series Wall or Partition Design in the UL Fire Resistance Directory...

- 2. Pipe or Conduit — Nom 12 in. diam. (or smaller) Schedule 40 (or heavier) steel pipe, nom 12 in. diam. (or smaller) service weight (or heavier) cast iron soil pipe, nom 12 in. diam. (or smaller) Class 50 (or heavier) ductile iron pipe, nom 6 in. diam. (or smaller) steel conduit, nom 4 in. diam. (or smaller) steel electrical metallic tubing, nom 6 in. diam. (or smaller) Type L or (or heavier) copper tubing or nom 1 in. diam. (or smaller) flexible steel conduit.

*Bearing the UL Classification Marking



Reproduced by HUL, Inc. Courtesy of Underwriters Laboratories, Inc. April 15, 2003

System No. W-W-D-1012 Assembly Rating — 2 Hr Nonmetal Joint Width — 3-3/4 in. Class II Movement Capabilities — 7% Compression or Extension Based On 500 Cycles At A Minimum 1 Cycle/Minute



System No. W-W-D-1000 Assembly Rating — 2 Hr Nonmetal Joint Width — 3-3/4 in. Class II Movement Capabilities — 5% Compression and Extension



System No. BW-S-0001 Assembly Rating — 1 and 2 Hr L Rating At Ambient — Less than 1 CFM/Ln Ft L Rating At 400° F — Less than 1 CFM/Ln Ft Joint Width — 3/4 in. Max

System No. W-W-D-1000 Assembly Rating — 2 Hr Nonmetal Joint Width — 3-3/4 in. Class II Movement Capabilities — 5% Compression and Extension