

1. IT IS THE INTENT OF THESE SPECIFICATIONS TO PROVIDE A COMPLETE INSTALLATION FOR FINISHED WORK, TESTED AND READY FOR OPERATION. THE WORK THROUGHOUT SHALL BE EXECUTED IN THE BEST AND MOST THOROUGH MANNER UNDER THE DIRECTION OF AND TO THE SATISFACTION OF THE OWNER.

2. ALL MATERIALS REQUIRED FOR THIS WORK SHALL BE NEW UNLESS BEST OF ITS RESPECTIVE KINDS AND FREE FROM DEFECTS AND OF FIRST CLASS QUALITY. BASIS OF QUALITY SHALL BE LATEST STANDARDS OF ASTM, ANSI FEDERAL SPECIFICATIONS OR OTHER ACCEPTABLE STANDARDS.

3. THE PLUMBING CONTRACTOR SHALL BE RESPONSIBLE FOR THEIR WORK UNTIL ITS COMPLETION AND FINAL ACCEPTANCE AND SHALL REPLACE ANY OF THE SAME WHICH MAY BE DAMAGED, LOST OR STOLEN WITHOUT ADDITIONAL COST TO THE OWNER.

4. THE PLUMBING CONTRACTOR SHALL GUARANTEE ALL WORK PERFORMED AND MATERIALS INSTALLED TO BE FREE FROM INHERENT DEFECTS AND SHALL KEEP IN REPAIR AND REPLACE ANY DEFECTIVE MATERIALS OF WORKMANSHIP, FREE OF COST TO THE TENANT (OWNER) FOR A PERIOD OF ONE (1) YEAR AFTER THE OPENING FOR BUSINESS.

5. ALL WORK SHALL BE DONE ACCORDING TO THE REQUIREMENTS OF ALL APPLICABLE CODES AND LEASE CRITERIA (IF APPLICABLE) AND SHALL RECEIVE THE APPROVAL OF ALL AUTHORITIES HAVING JURISDICTION. PREPARE ALL REQUIRED DOCUMENTS, DRAWINGS AND PERFORM ALL REQUIRED TESTS AND PAY ALL REQUIRED CHARGES TO OBTAIN THESE APPROVALS.

6. CONTRACTOR SHALL BE HELD TO HAVE EXAMINED THE SITE FOR THE WORK BEFORE HAVING SUBMITTED A PROPOSAL. NO ADDITIONAL COMPENSATION WILL BE ALLOWED FOR CONDITIONS FOUND DURING THE COURSE OF THE CONTRACT.

7. THIS CONTRACTOR MUST PROVIDE LANDLORD'S CONSTRUCTION REPRESENTATIVE WITH COPIES OF REQUIRED INSURANCE AND COPIES TO BE FURNISHED TO THE OWNER BEFORE COMMENCING WORK.

8. SUBMIT THREE (3) SETS OF SHOP DRAWINGS IDENTIFIED WITH PROJECT NAME OF THE FOLLOWING: (1) ELECTRIC HOT WATER HEATER OR BOILER/GENERATOR (2) PLUMBING FIXTURES AND TRIM. CONTRACTOR SHALL SUBMIT SHOP DRAWING OF PIPING LAYOUT TO THE OWNER FOR THEIR FILE.

9. THE PLUMBING SUBCONTRACTOR IS A SUBCONTRACTOR OF THE TENANT'S GENERAL CONTRACTOR.

10. NOTCHING AND BORING OF STRUCTURAL STEEL MEMBERS IS NOT PERMITTED. WHEN HANGING FROM STRUCTURAL STEEL ONLY HANG FROM TOP FLANGE OF BEAMS AND TOP CHORDS ONLY AT PANEL POINTS OF JOISTS / TRUSSES.

11. WORK RESPONSIBILITY

1. FURNISH ALL LABOR, MATERIALS, EQUIPMENT AND CONTRACTORS FOR A COMPLETE, SAFE INSTALLATION OF PLUMBING WORK IN FULL CONFORMITY WITH REQUIREMENTS OF ALL AUTHORITIES HAVING JURISDICTION AS INDICATED ON DRAWINGS AND/OR HEREIN SPECIFIED, INCLUDING IN GENERAL, THE FOLLOWING:

2. SANITARY DRAINAGE CONNECTIONS TO PLUMBING FIXTURES AND EQUIPMENT REQUIRING SAME WITH FINAL CONNECTIONS TO EXISTING PREINSTALLED OUTLETS PROVIDED BY PRIOR TENANTS) OR LANDLORD. PLUMBER SHALL VERIFY EXACT LOCATION OF WASTE PIPE OUTLET BEFORE SUBMITTING BID AND NOTIFY THE ARCHITECT OF ANY LOCATION DISCREPANCIES. PLUMBING CONTRACTOR SHALL BE RESPONSIBLE FOR ANY CONCRETE SAKCUTTINGS REQUIRED TO MAKE THE FINAL CONNECTION TO THE EXISTING WASTE PIPING OR CAPRIST CUTLIES). SAKCUTTING, EXCAVATING, BACKFILLING AND NEW CONCRETE MUST MEET WITH THE LANDLORD'S APPROVAL.

A. SINK SANITARY FOR A DISTANCE OF 100 FEET AND REPORT ANY BLOCKAGE.

B. TEST WATER PRESSURE TO INSURE MINIMUM OF 50 PSI.

3. COMPLETE VENT SYSTEM. ALL FIXTURES INDIVIDUALLY VENTED WITH FINAL CONNECTION THROUGH ROOF OR TO EXISTING LANDLORD SUPPLIED COMMON VENT. ROOF PENETRATION AND FLASHING TO BE PERFORMED BY LANDLORD'S ROOFER (IF APPLICABLE). COST OF ROOF PENETRATION AND FLASHING TO BE PART OF THIS CONTRACT, UNLESS NOTED OTHERWISE IN BID PROPOSAL (IF APPLICABLE).

4. DOMESTIC WATER SUPPLY SYSTEM INCLUDING CONNECTION TO EXISTING CAPPED OUTLET AND FINAL CONNECTIONS TO PLUMBING FIXTURES AND EQUIPMENT REQUIRING SAME. VERIFY EXACT LOCATION AND SIZE BEFORE SUBMITTING BID.

5. INSULATION OF ALL HOT AND COLD WATER PIPING, INCLUDING UNDER LAVATORY A.D.A. PIPE WRAPPINGS.

6. FURNISH AND INSTALL WATER METER (IF APPLICABLE) ACCESSIBLE TO UTILITY COMPANY OR LANDLORD'S REPRESENTATIVE FOR MONITORING WATER, BUT METER SHOULD IN NO WAY BE IN THE PATH OF THE A.D.A./C.A.B.A.-ANSI, 3" CIRCULAR PATTERNS.

7. COSTS FOR WORKING BELOW TENANTS SLAB IN ANOTHER TENANT'S SPACE.

8. INSTALLATION OF FLOOR DRAIN BACKFLOW PREVENTER (IF REG. BY CODE) PER LANDLORD REQUIREMENT AND GLEANOUT PER LOCAL CODE. COORDINATE ALL LOCATIONS WITH OPERATIONS MANAGER.

9. COMPLETE NATURAL GAS PIPING SYSTEMS (AS APPLICABLE, REFER TO PLANS)

11. GENERAL ITEMS

1. SLEEVES: PROVIDE #2 GAGE GALVANIZED IRON PIPE SLEEVES FOR PIPING THROUGH WALLS AND FLOOR. PACK WITH NON-ASBESTOS ROPE AND FILL WITH EXPANDO NON-SHRINKING GEMENT.

2. ESCUTCHEONS: PROVIDE EXPOSED PIPING, BOTH BARE AND COVERED, WITH CP CAST BRASS ESCUTCHEONS WHERE PASSING THROUGH FLOORS, CEILINGS, WALLS OR PARTITIONS.

3. HANGERS AND SUPPORTS: SUPPORT HORIZONTAL DRAINAGE PIPING AT LEAST EVERY 5 FEET OR AT EVERY 1/2" COPPER TUBING EVERY 1 FEET AND STEEL PIPE EVERY 10 FEET WITH CLIP/HANGER AND INSULATION PROTECTION SHIELDS. PIPING SHALL NOT BE SUPPORTED FROM BRIDGES OR OTHER PIPING. ONLY SUPPORT FROM TOP FLANGES OF BEAMS AND TOP CHORDS AT PANELS OF JOIST AND TRUSSES. PROVIDE SHOT AND SEISMIC BRACING WHERE REQUIRED BY CODE.

4. TEST: TEST PIPING AND PROVE TIGHT FOR AT LEAST TWO HOURS IN ACCORDANCE WITH REQUIREMENTS OF AUTHORITIES HAVING JURISDICTION AND/OR AS SPECIFIED. TEST SHALL BE PERFORMED IN THE PRESENCE OF OWNER'S REPRESENTATIVE AND LOCAL INSPECTOR. TEST SHALL BE REPEATED IF NECESSARY UNTIL FINAL APPROVAL OF SYSTEM IS OBTAINED.

A. TEST DRAINAGE AND VENT PIPING BY FILLING WITH WATER TO OVERFLOWING AT ROOF WATER LEVEL TO REMAIN.

B. TEST WATER PIPING WITH WATER 1 1/2 TIMES THE WORKING PRESSURE.

5. STERILIZATION OF DOMESTIC WATER SYSTEM: BEFORE BEING PLACED IN SERVICE, ALL WATER LINES SHALL BE DISINFECTED TO THE SATISFACTION OF THE ARCHITECT OR LANDLORD'S REPRESENTATIVE, IN ACCORDANCE WITH A.J.A.H.A. SPECIFICATION G69-05.

6. SLOPE WASTE LINES 2 INCHES AND SHALL NOT BE LESS THAN 1/4 INCH PER FOOT. SLOPE LARGER MAINS NOT LESS THAN 1/8 INCH PER FOOT.

7. INSTALL A GLEANOUT AT BASE OF EACH SOIL STACK, AT EACH CHANGE IN DIRECTION, AT INTERVALS NOT OVER 50 FEET AND ELSEWHERE AS SHOWN ON DRAWINGS OR REQUIRED BY LOCAL CODE. GLEANOUTS SHALL NOT BE INSTALLED IN PUBLIC AREAS WITHOUT SPECIFIC PERMISSION BY TENANT'S CONSTRUCTION MANAGER.

III. MATERIALS

1. DRAINAGE AND VENT PIPING: EXTRA HEAVY 1/2" AND SPOT CAST IRON SOIL WITH RUBBER GASKETS CONFORMING TO ASTM C594, OR APPROVED EQUAL, PER LOCAL AND STATE BUILDING CODES. NO-HUB CAST IRON TO HAVE HEAVY DUTY, TYPE 304 STAINLESS STEEL GASKETS CONFORMING TO ASTM A 696, TYPE 304 STAINLESS STEEL SHIELD, TYPE 304 STAINLESS STEEL BANDS AND SLEEVE.

2. WATER PIPING BELOW SLAB: TYPE K HARD COPPER TUBING WITH CAST BRONZE OR BRASS COPPER SOLDER JOINT FITTINGS USING 45-5 SOLDER. WATER PIPING ABOVE SLAB: TYPE L HARD COPPER TUBING USING SILVER SOLDER. ALL WATER SUPPLY PIPING TO CONFORM TO NSF/ANSI 61 AND ASTM B 75, ASTM B 88, ASTM B 221, OR ASTM B 441. ALL PIPE FITTINGS SHALL CONFORM TO ASSE 1061, ASME B 16.10, ASME B 16.22, ASME B 16.25, ASME B 16.26, AND ASME B 16.24.

3. WATER HAMMER ARRESTERS: PROVIDE ON HOT AND COLD WATER BRANCHES TO FIXTURES, ZURN MODEL 1260LX SERIES. REFER TO INSULATION MANUAL FOR SIZING. WATER HAMMER ARRESTERS SHALL CONFORM TO ASSE 1010.

4. VALVES: GATE VALVE MATTS SERIES B-3000, CHECK VALVE MATTS SERIES B-3000, BALL VALVE MATTS SERIES B3000 OR B3001 FULL PORT. ALL VALVES 1/2" TO 2" BRONZE BODY. VALVES SHALL CONFORM TO NSF/ANSI 61.

5. PRESSURE AND TEMPERATURE RELIEF VALVE: MATTS REGULATING CO. MODEL 10L T4P RELIEF VALVE SHALL CONFORM TO ANSI Z31.22.

6. PRESSURE REDUCING VALVE: MATTS SERIES 25A16 BRONZE BODY WITH INTEGRAL 5/8" STRAINER SEALED GASKET FOR 1/2" TO 2 1/2" DIA. TO 300 PSI. PRESSURE REDUCING VALVE SHALL CONFORM TO ASSE 1003.

7. PRESSURE GAUGE: AMETEK DIV. OF U.S. GAUGE SERIES P-500, UP TO 4-1/2" DIA. 1/4" STEM, ALUMINUM CASE, BLACK FINISH.

8. AIR VENT: HOFFMAN #7M WATER MAIN VENT VALVE.

9. WATER METER: HEMCO MODEL 400 SERIES IIS. WATER METER SHALL CONFORM TO ALL APPLICABLE PARTS OF ANSI/AWWA C700 AND NSF/ANSI 61.

10. VACUUM RELIEF VALVE: MATTS MODEL NS6-N BRASS BODY, 1/2" NPT LINE SIZE. VACUUM RELIEF VALVES SHALL CONFORM TO ANSI Z31.22.

11. EXPANSION TANK: AMTROL THERMAL EXPANSION TANK MODEL ST. CONTRACTOR TO VERIFY SIZE REQUIRED FOR EXPANSION TANK PRIOR TO BID. THERMAL EXPANSION TANK TO CONFORM TO NSF/ANSI 61.

12. TRAP PRIMER: PRECISION PLUMBING PRODUCTS INC. MODEL P1-500 UP TO FOUR CONNECTIONS. OPTIONAL DISTRIBUTION UNIT REQUIRED FOR 2, 3 AND FOUR DRAIN LINES. TRAP PRIMERS TO CONFORM TO ASSE 1018 OR ASSE 1044.

13. MIXING VALVE: MATTS SERIES LHMV MIXING VALVE, 1/2" LINE SIZE. MIXING VALVE SHALL CONFORM TO ASSE 1011, ASSE 1004 & ASSE 1010.

14. BACKFLOW PREVENTER: ZURN MODEL 475X2 REDUCED PRESSURE PRINCIPLE ASSEMBLY BACKFLOW PREVENTER. LINE SIZE 3/4" TO 2" TO MATCH INLET WATER LINE SIZE. PREVENTER SHALL CONFORM TO ASSE 1015 AND AWWA C511.

15. INSULATION

I. ALL HOT AND COLD WATER PIPING AND FITTINGS SHALL BE INSULATED WITH 1" THICK RIGID FIBERGLASS WITH VAPOR BARRIER UNIVERSAL JACKET PASTED WITH VAPOR BARRIER GEMENT. VAPOR BARRIER NOT REQUIRED ON HOT WATER PIPING.

2. ALL ADA CONFORMING, WHEELCHAIR ACCESSIBLE LAVATORY P-TRAP AND ANGLE VALVE ASSEMBLIES TO BE COVERED WITH THE HOLLOWED ANTI-MICROBIAL TRUBRO, INC. "LAV-GUARD" UNDERINK PROTECTIVE PIPE COVER MODEL M3.

V. SPECIFIC PLUMBING SPECIFICATIONS

1. INSTALL NEW ONLY IF EXISTING DOES NOT MEET CURRENT ADA/CABO-ANSI AS APPLICABLE.

2. IT IS THE CONTRACTOR'S RESPONSIBILITY TO SUPPLY HANDICAPPED TOILET FIXTURES, IF REQUIRED BY CODE OR NOTED ON THE DRAWINGS, UTILIZING THE SPECIFICATION ABOVE AS A STANDARD AND MEETING CODE REQUIREMENTS. SPECIFICATIONS OF FIXTURES TO BE COORDINATED WITH THE GENERAL CONTRACTOR AS WELL AS THE PLUMBING INSPECTOR'S REQUIREMENTS.

VI. LANDLORD'S CRITERIA

1. THE PLUMBING CONTRACTOR IS TO BECOME FAMILIARIZED WITH LANDLORD'S CRITERIA FOR THIS LOCATION AND INCLUDE ANY WORK REQUIRED OF THIS CRITERIA, WHICH IS NOT SPECIFICALLY NOTED IN THESE DRAWINGS AND SPECIFICATIONS.

VII. ELASTOMERIC WATERPROOFING MEMBRANE

1. DESCRIPTION: MANUFACTURER'S PROPRIETARY ELASTOMERIC COMPOUND FORMULATED FOR USE AS HEAVY DUTY WATERPROOF MEMBRANE UNDER CERAMIC TILE FLOORS.

2. REQUIRED IN WET AREAS.

3. TO BE APPLIED TO ALL FLOORS.

4. FLOOR MUST FIT TO FLOOR DRAIN.

8. ACCEPTABLE MANUFACTURERS:

a. BOSTIC CONSTRUCTION PRODUCTS, HATINGSDON VALLEY, PA.

b. HAFER CORPORATION, ELK GROVE VILLAGE, IL.

c. THE NOBLE COMPANY, GRAND HAVEN, MI.

d. LATIGRETE INTERNATIONAL, BETHANY, CT.

9. INSTALLATION (2 COATS)

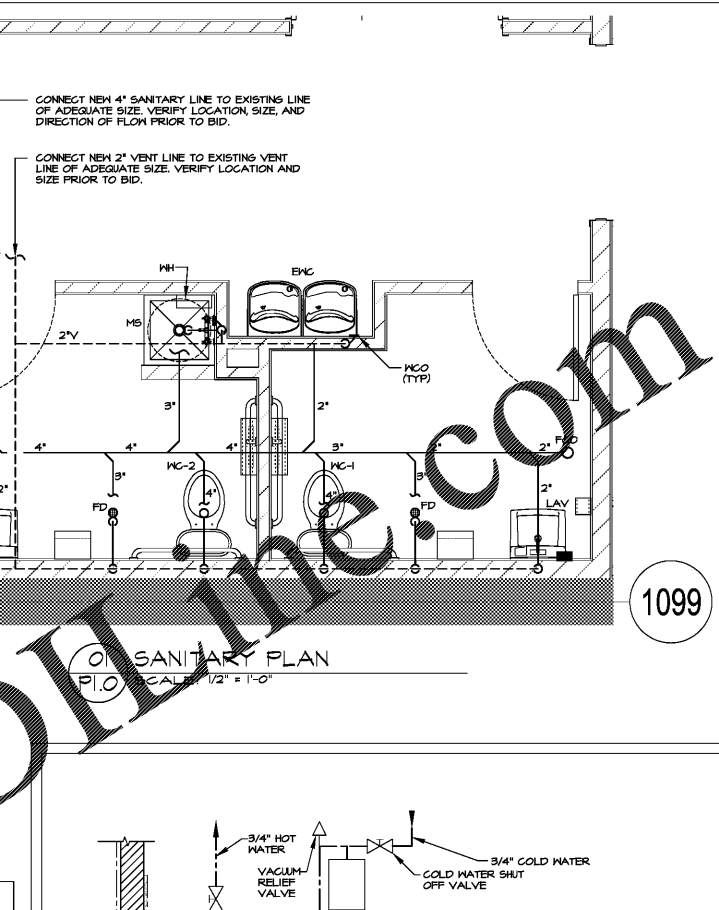
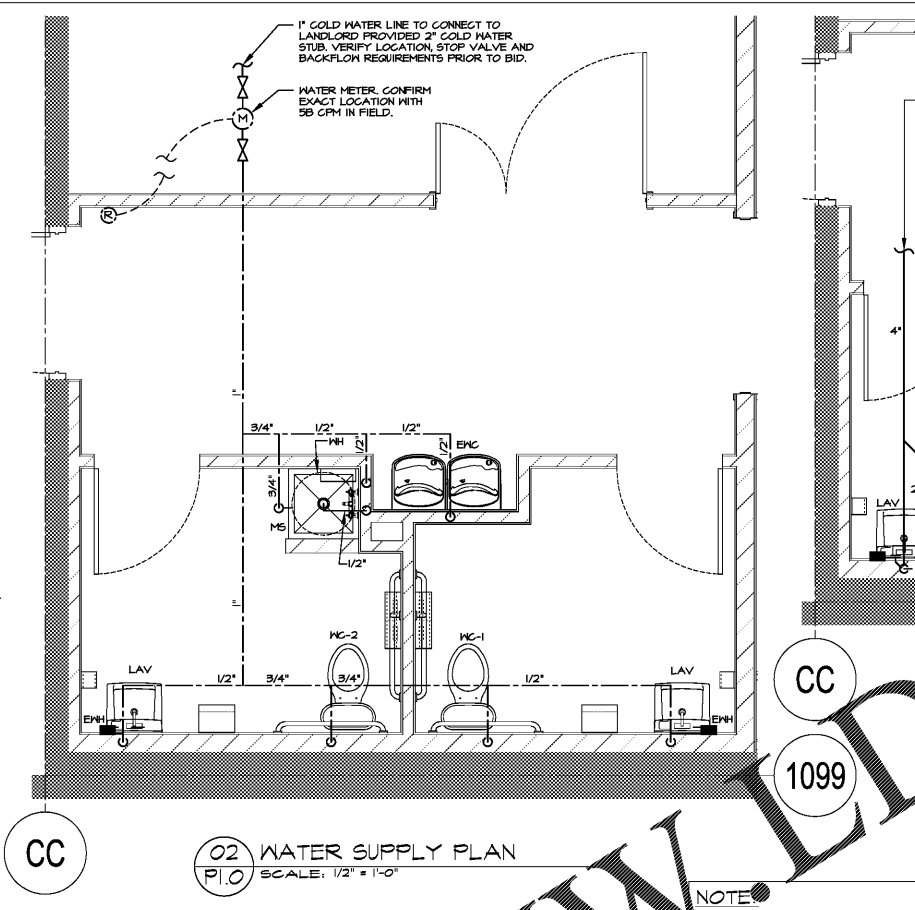
a. INSTALL OVER GUREX GEMENT MORTAR BED AND CONCRETE FLOORS AS APPLICABLE. IN STRICT COMPLIANCE WITH MANUFACTURER'S INSTRUCTIONS.

b. FLASH MEMBRANE 4" UP ADJACENT WALLS AND RESTRAINING SURFACES AS RECOMMENDED BY MANUFACTURER.

c. ALLOW MEMBRANE TO CURE PRIOR TO SETTING TILE.

d. DO NOT ALLOW CONSTRUCTION TRAFFIC ON MEMBRANE.

e. MUST BE SLEEVED AND CALLED.



03 PLUMBING NOTES
SCALE: NO SCALE

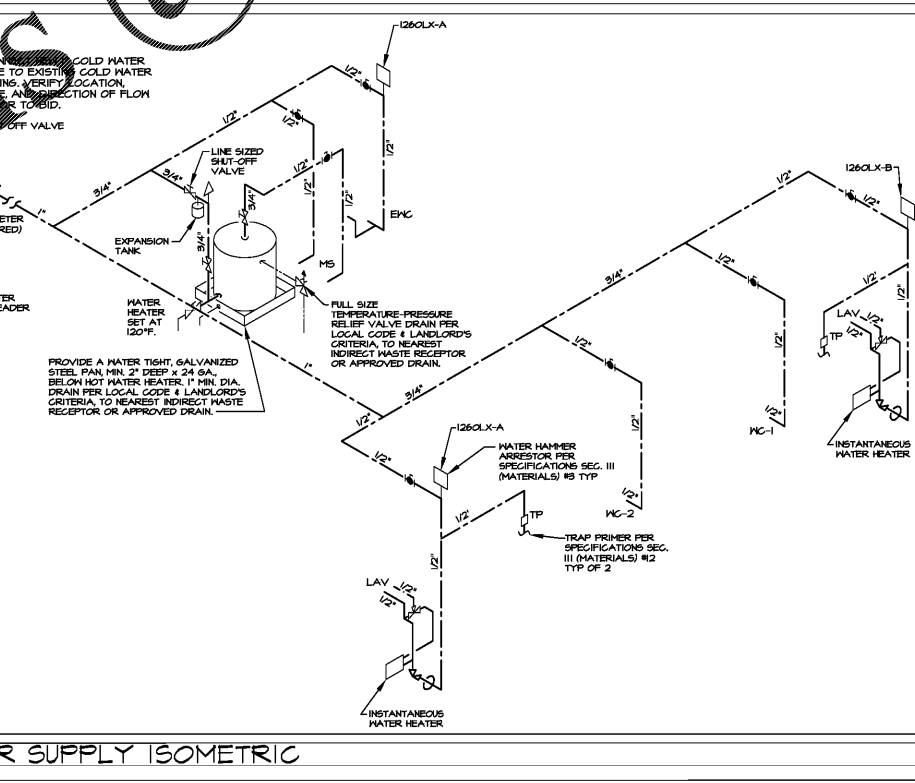
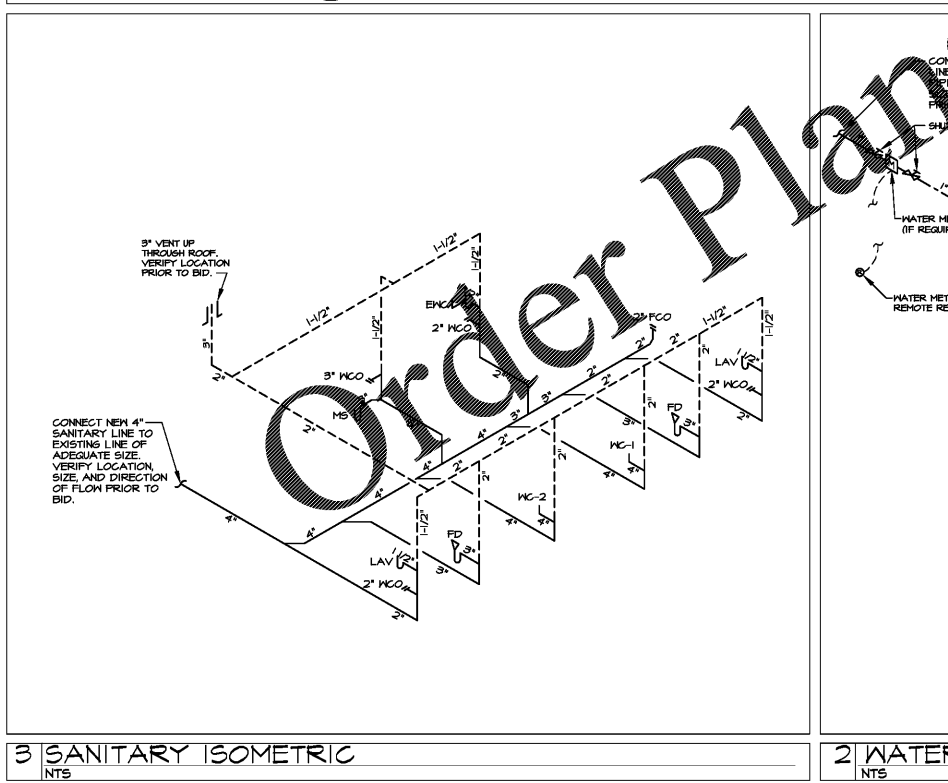
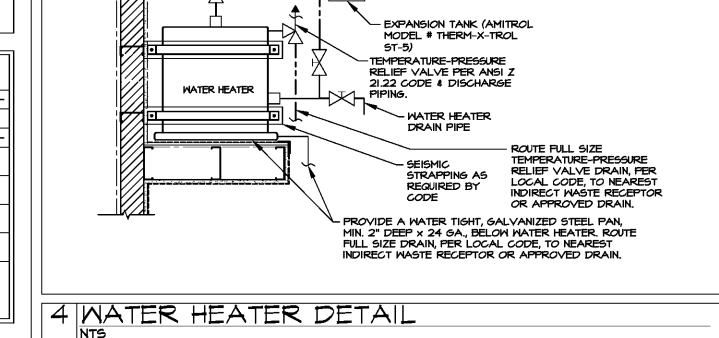
02 WATER SUPPLY PLAN
SCALE: 1/2" = 1'-0"

01 SANITARY PLAN
SCALE: 1/2" = 1'-0"

NOTE: PLUMBING SYSTEM TO BE PROVIDED AND INSTALLED BY LANDLORD.

WATER SUPPLY FIXTURE UNITS

FIXTURE	FIX	GAZ	RI	TO	VEN	WRFI	NSFI	TOTAL
	2	1	1	1	1	1	1	
WATER CLOSET (WC)	2	2	2	2	2	2	2	10
LAVATORY (LAV)	2	2	2	2	2	2	2	4
EMERGENCY FLOOR DRAIN (FD)	2	0	0	0	0	0	0	-
TRAP PRIMER (TP)	2	-	-	-	-	0.5	1	0.5
HOP SINK (HS)	1	2	2	2	2	2	2	8
DRINKING FOUNTAIN (EHC)	2	0.5	1	1/2	0.25	0.5	0.5	0.5
TOTAL	18	-	-	-	-	1.5	1.5	18.5
SERVICE CONNECTION SIZE	4"	3"	3"	3"	3"	3"	3"	1"



PLUMBING FIXTURE SCHEDULE

MARK	FIXTURE	MANUFACTURER & MODEL NO.	GH	IN	H	V	REMARKS
MC-1	WATER CLOSET	AMERICAN STANDARD NO. 2467.016	1/2"	-	4"	2"	LEFT HAND FLUSH INTEGRAL HANDICAP TANK TYPE ELONGATED WATER SAVER CADET, OLSONITE NO. 18CT OPEN FRONT SEAT, 30" C.P. SUPPLY WITH LOOSE KEY STOP, 1.6 GAL. FLUSH - 17.5" SEAT HEIGHT, (A.D.A. COMPLIANT).
MC-2	WATER CLOSET	AMERICAN STANDARD NO. 3469.016/4142.000	1/2"	-	4"	2"	RIGHT HAND FLUSH INTEGRAL HANDICAP TANK TYPE ELONGATED WATER SAVER CADET, OLSONITE NO. 18CT OPEN FRONT SEAT, 30" C.P. SUPPLY WITH LOOSE KEY STOP, 1.6 GAL. FLUSH - 17.5" SEAT HEIGHT, (A.D.A. COMPLIANT).
LAV	LAVATORY	AMERICAN STANDARD NO. 2096.421	1/2"	1/2"	2"	2"	HALL MOUNTED LUCERNE VITREOUS CHINA WITH SINGLE CENTER HOLE AMERICAN STANDARD FAUCET NO. 1480150 SEVA SINGLE CONTROL CENTERSET, 0.5 GPM GRD DRAIN WITH 1 1/4" T.P., 1 1/4" C.P. T. GA. 1" TRAP, 3/8" C.P. SUPPLIED WITH LOOSE KEY STOP. JOURNAL FLOOR MOUNTED CARRIER SINGLE LEVER, A.D.A. AND ANSI A111 APPROVED. INSULATE DRAIN AND SUPPLY LINES WITH 1/2" ARM-STRONGS "ARCH-FLEX" PIPING INSULATION.
ED	FLOOR DRAIN	JOSAM NO. 3000S-5A	1/2"	-	3"	2"	CAST IRON FLOOR DRAIN, TWO-PIECE BODY WITH DOUBLE DRAINAGE FLANGE AND 1/2" INCH MELT-IN-REPLACE FLANGING COLLAR, INFERIOL, BOTTOM OUTLET CONNECTION AND INKALTY ADJUSTABLE ROUND SUPER-FLG STRAINER.
EHC	ELEC. WATER COOLER	ELKAY MODEL NO. E2312FC	1/2"	-	2"	2"	FURNISH WITH STANDARD CABINET PANELS, COLOR BY ARCH. STON # 1201/60
HS	HOP SINK	FIAT M8B1D2424	1/2"	1/2"	3"	2"	24x24x10 HOP BASIN, WHITE, FURNISH WITH FIAT #830-AA FAUCET.
EH	ELEC. WATER HEATER	A.O. SMITH NO. DEL-6 3000 MATTS	3/4"	3/4"	-	-	COMPACT 6 GAL. WATER HEATER, 200V/60HZ, NON-SIMULTANEOUS 3000 MATTS, A.O.SMITH (OR EQUIVALENT)
EH	ELEC. WATER HEATER	REMEX SP3200 0.5 6PM 3000 MATTS	1/2"	1/2"	-	-	INSTANTANEOUS WATER HEATER 14.4 AHP, 3000 MATTS AT 208 VOLTS, SINGLE PHASE, UNIT SHALL HAVE REPLACEABLE FILTER IN INLET AND 0.5 GPM CONSTANT FLOW REGULATOR.
EGG	FLOOR GLEANOUT	JOSAM SERIES 58360	-	-	-	-	ADJUSTABLE GLEANOUT. SEE PLUMBING PLAN AND ISOMETRICS FOR SIZE.
MG	HALL GLEANOUT	JOSAM SERIES 58410	-	-	-	-	JOSAM (OR APPROVED EQUIVALENT) THE GLEANOUT FOR USE IN HALLS. PROVIDE WITH JOSAM SERIES 58400 WALL ACCESS COVER. SEE PLUMBING PLAN AND ISOMETRICS FOR SIZE.

NOTES:
1. ALL FIXTURES SHALL HAVE AN INDIVIDUAL SHUTOFF VALVE.
2. INSTALL A METER AND/OR BACKFLOW PREVENTER AS LOCAL CODE REQUIRES.

FREDERICK J. GOGLIA
ARCHITECT, NCARB RDI
1960 CHAS. ROAD, SUITE 300
ST. LOUIS, MO 63146
PH: (314) 467-9600 FAX: (314) 467-2000 www.rjgva.com

ENGINEER

ARCHITECTURAL SEAL

DATE ISSUE

00/00/19 PERMIT / OWNER

DATE REVISION NAME

PROJECT NAME / LOCATION

five below

THE PROMENADE
3942 PROMENADE PARKWAY
D'BERVILLE, MS 39540

PROJECT INFORMATION

DATE: APRIL 26, 2019
PROJECT NO. 190219
DELIVERY TYPE: V-BOX

DRAWN: DEA
CHECKED: SP

SHEET TITLE / NUMBER

PLUMBING PLAN, NOTES, RISER DIAGRAM & SPECIFICATIONS

P1.0