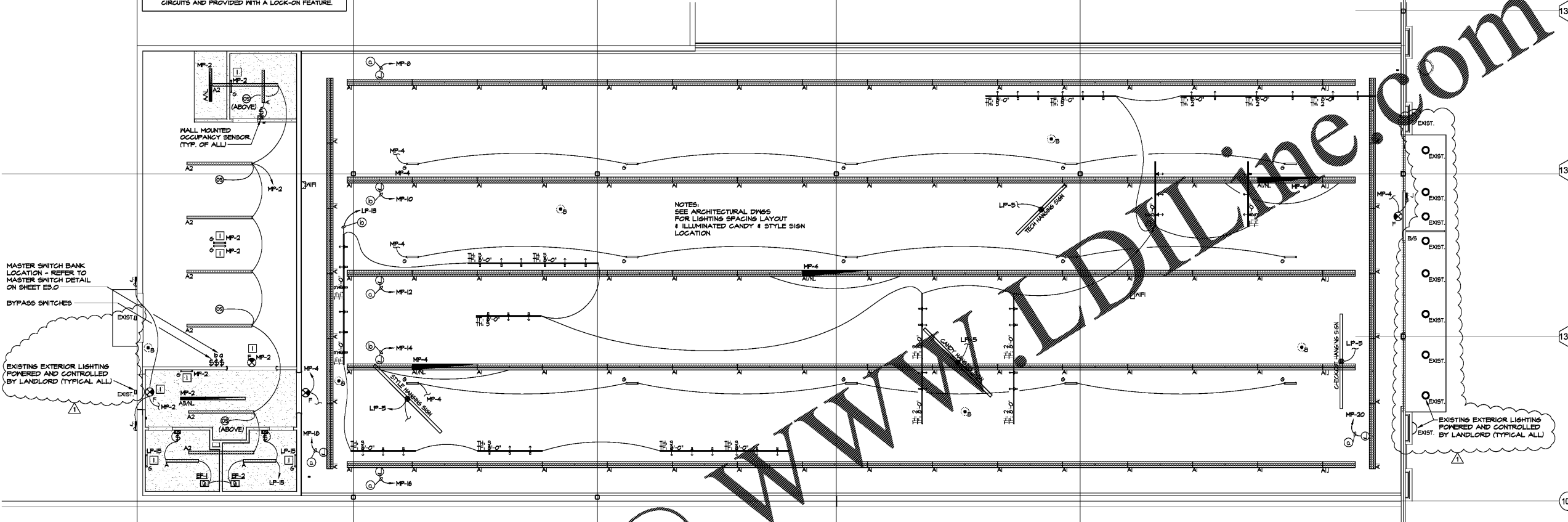


NOTE:
REFER TO ARCH A2.0 FOR
DIMENSIONS OF LIGHTING

1 LIGHTING NOTE:
NEC 2014 SECTION 700.12 (F)
ALL UNIT EQUIPMENT (EMERGENCY LIGHTING) SHALL BE WIRED AHEAD OF SWITCH OR CONTROL OF NORMAL LIGHTING CIRCUIT SERVING THAT AREA. THE BRANCH CIRCUIT FEEDING THE UNIT EQUIPMENT SHALL BE THE SAME BRANCH CIRCUIT AS THAT SERVING THE NORMAL LIGHTING IN THE AREA AND CONNECTED AHEAD OF ANY LOCAL SWITCHES. THE BRANCH CIRCUIT THAT FEEDS THE EQUIPMENT SHALL BE CLEARLY IDENTIFIED AT THE DISTRIBUTION PANEL.
IN A SEPARATE AND UNINTERRUPTED AREA SUPPLIED BY A MINIMUM OF THREE NORMAL LIGHTING CIRCUITS, A SEPARATE BRANCH CIRCUIT FOR UNIT EQUIPMENT SHALL BE FROM THE SAME PANELBOARD AS THAT OF THE NORMAL LIGHTING CIRCUITS AND PROVIDED WITH A LOCK-ON FEATURE.



1 LIGHTING PLAN

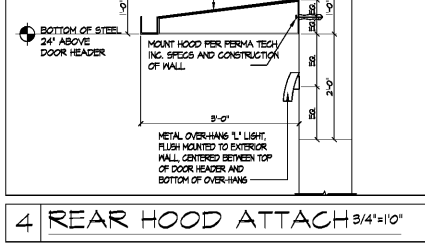
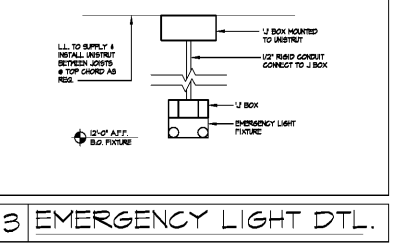
SCALE: 3/16" = 1'-0"

TYPE	SYMBOL	MANUFACT./CAT. #	DESCRIPTION	MOUNTING TYPE	LAMP(S)	VOLTS/WATTS	REMARKS
A	[Symbol]	DAY-BRITE LIGHTING T-2-52-UV	4' 2-LAMP STRIP SINGLE END W/RED	CEILING MOUNTED	LED T8	UNV 24	PROVIDED & INSTALLED BY I.L.
A1	[Symbol]	DAY-BRITE LIGHTING TK-5-5-52-UV/1 (2) IK-BF	8' INDUSTRIAL WITH CROSS BAFFLE	CABLE MOUNTED	LED T8	UNV 102	PROVIDED & INSTALLED BY I.L. A/NL 5M - SEE ELEC. PLAN FOR WIRING
A2	[Symbol]	DAY-BRITE LIGHTING TK-5-5-52-UV/1 (1) IK-BF	4' INDUSTRIAL WITH CROSS BAFFLE	CABLE MOUNTED	LED T8	UNV 51	PROVIDED & INSTALLED BY I.L. A/NL 5M - SEE ELEC. PLAN FOR WIRING
AJ	[Symbol]	DAY-BRITE LIGHTING TT-2-52-UV	8' 2-LAMP STRIP SINGLE END W/RED	CABLE MOUNTED	LED T8	UNV 60	PROVIDED & INSTALLED BY I.L. A/NL 5M - SEE ELEC. PLAN FOR WIRING
AS	[Symbol]	DAY-BRITE LIGHTING TT-2-52-UV	8' 2-LAMP STRIP SINGLE END W/RED	CEILING MOUNTED	LED T8	UNV 60	PROVIDED & INSTALLED BY I.L. A/NL 5M - SEE ELEC. PLAN FOR WIRING
B	[Symbol]	SONO SOLUTION K-0950-1000-02-00	DUMMY DOME DROP CAMERA	PENDANT MOUNTED	-	-	PROVIDED BY I.L. INSTALLED BY T.S.G. T.S.G. PROVIDE & INSTALL BATTERIES
E	[Symbol]	SPEAKER	UNIVERSAL EXIT LED RED	SURFACE MOUNTED	LED	UNV 2	PROVIDED & INSTALLED BY I.L.
FL	[Symbol]	LOZIER QUICK CONNECT LIGHTS LX55-3-LED-HOOD	UNDER SHELF LIGHTING REFER TO PLAN	MAGNET MOUNTED	LED	24	PROVIDED BY F.B. & INSTALLED BY T.S.G.
G	[Symbol]	SIRE-LITE APEL	DUAL HEAD EMERGENCY W/ BATTERY PACK	CEILING MOUNTED/ WALL MTD SEE DETAIL	LED	UNV 5	PROVIDED & INSTALLED BY I.L. SEE DTL. 4/A2.0 FOR MOUNTING
I	[Symbol]	CREE L85-2L-28K-8/24/RC4-8/24	6" LED DOWNLIGHT	RECESSED FUTURE	LED	120	PROVIDED & INSTALLED BY I.L.
J	[Symbol]	EXTRONIX RS12-90-Q-IV 2/2/2H	DUAL HEAD REMOTE W/ BATTERY	WALL MOUNTED	-	12 14	PROVIDED & INSTALLED BY I.L.
L	[Symbol]	COOPER XTR05B-H	EXTERIOR WALL PACK	WALL MOUNTED	LED	UNV 18	PROVIDED & INSTALLED BY I.L.
LB	[Symbol]	ICI WORLDWIDE X-616-48N-GLM10	4' FIXTURE HANGING IN STYLE SECTION	CLIP/MOUNT	LED	120	PROVIDED BY F.B. & INSTALLED BY T.S.G.
LT-4	[Symbol]	HOUSING - JNO T8WH	4' TRACK	THREADED ROD PAINTED P.I.	LED	120	PROVIDED & INSTALLED BY I.L. BL TRACK LIGHTS # 12-4" AFF. U.O.N.
LT-8	[Symbol]	HOUSING - JNO T8WH	8' TRACK	THREADED ROD PAINTED P.I.	LED	120	PROVIDED & INSTALLED BY I.L. BL TRACK LIGHTS # 12-4" AFF. U.O.N.
M	[Symbol]	SELP MP24-2-4L-100K	EXTERIOR RESSORCE	SURFACE MOUNTED	LED	UNV 52	PROVIDED & INSTALLED BY I.L.
N	[Symbol]	COOPER PSS2-2010-0-MV PRM200-100	UNDER CANTILEVER LIGHT	SURFACE MOUNTED	LED	UNV 24	PROVIDED & INSTALLED BY I.L.
TH	[Symbol]	HOUSING - JNO R854WH / LAMP - T8 T8PAR-140/40/R854WH	UNDER BACK SPOTLIGHT TRACK	TRACK MOUNTED	LED	120 11	PROVIDED & INSTALLED BY I.L. BL TRACK LIGHTS # 12-4" AFF. U.O.N.
	[Symbol]		OCCUPANCY SENSOR	CEILING (HANG), WALL			PROVIDED & INSTALLED BY I.L.

NOTE: LIGHT FIXTURES WILL BE PROCURED THROUGH VILLA LIGHTING'S LIGHTING PROGRAM WITH VILLA LIGHTING. VILLA LIGHTING CORPORATION HAS NEGOTIATED DISCOUNTED BULK PRICING FOR BENEFIT OF ITEM. LANDLORD'S PROJECTS NATIONWIDE. PRODUCT WILL BE STOCKED AT VILLA LIGHTING'S DISTRIBUTION CENTER IN ST. LOUIS, MO, AND CAN SHIP WITHIN 48 HOURS OF RELEASE. PLEASE ALLOW A MAXIMUM OF 4-5 DAYS OF TRAVEL AFTER RELEASE. CONTACT DEREK VICKROY AT (314) 855-0584 OR DEREK.VICKROY@VILLALIGHTING.COM
* N - NIGHT LIGHT

2 LIGHTING FIXTURE SCHEDULE

@



FREDERICK J. GOGLIA
ARCHITECT, INC. (AIA, FRI)
1860 CHAMBERLAIN ROAD, SUITE 300
ST. LOUIS, MO 63146
PH: (314) 465-2400 FAX: (314) 465-2800 www.fjg.com

ENGINEER

ARCHITECTURAL SEAL

DATE ISSUE

DATE	REVISION	NAME
05/24/19	LANDLORD COMMENTS	CW
05/17/19	PERMIT / OWNER	

PROJECT NAME / LOCATION
five BELOW
THE PROMENADE
3942 PROMENADE PARKWAY
D'BERVILLE, MS 39540

PROJECT INFORMATION
DATE: APRIL 26, 2019
PROJECT NO. 190219
DELIVERY TYPE: V-BOX

DRAWN: PB
CHECKED: TJ
SHEET TITLE / NUMBER
LIGHTING PLAN
E2.0