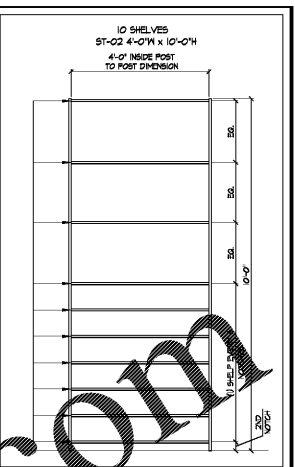
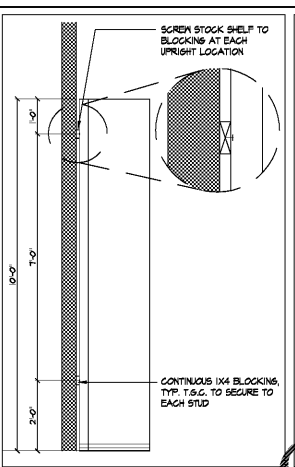
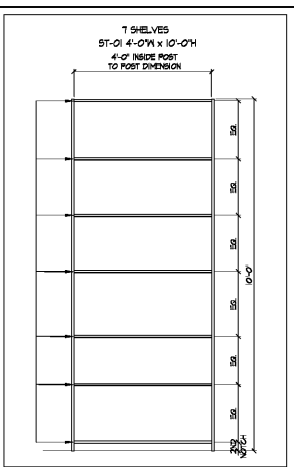
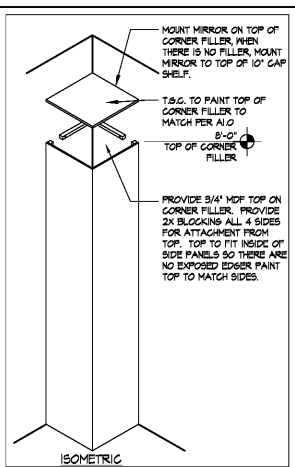
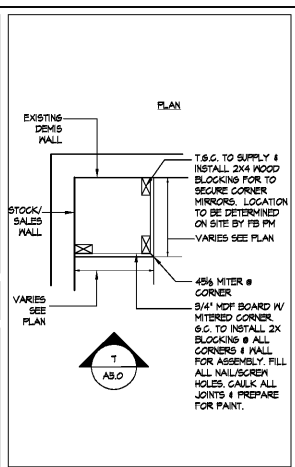


A. ALL HARDWARE LISTED BELOW SHALL BE SUPPLIED BY L.L. UNLESS OTHERWISE NOTED.
B. ALL HARDWARE SHALL HAVE SATIN CHROME FINISH UNLESS OTHERWISE NOTED.
C. OPENINGS SHALL BE MINIMUM OF 32" WIDE WHEN DOORS ARE AT A RIGHT ANGLE TO THE CLOSED POSITION.
D. MAX EFFORT TO OPERATE DOOR SHALL NOT EXCEED 8.5 POUNDS FOR EXTERIOR DOORS AND 5 POUNDS FOR INTERIOR DOORS WITH A FULL OF PUSH EFFORT BEING APPLIED AT RIGHT ANGLES TO HINGED DOORS AND AT THE CENTER PLANE OF SLIDING OR FOLDING DOORS. COMPENSATING DEVICES OR AUTOMATIC DOOR OPERATIONS MAY BE UTILIZED TO MEET THE ABOVE STANDARDS. WHEN FIRE DOORS ARE REQUIRED, THE MAX EFFORT TO OPERATE THE DOORWAY MAY BE INCREASED NOT TO EXCEED 14 POUNDS WITH CLOSURE.
E. INTERIOR METAL DOORS SHALL BE 20 GA. ALL EXTERIOR DOORS SHALL BE 18 GA.
F. HAND ACTIVATED DOOR OPENING HARDWARE SHALL BE CENTERED BETWEEN 30" AND 44" ABOVE THE FINISHED FLOOR.

1 DOOR TYPES

A DOOR/HARDWARE NOTES

SET #	LOCATION	DOOR TYPE	HARDWARE	FINISH	REMARKS
SET #1A	SALES/CORRIDOR DOOR	NORTON 8850-H, HINGE SIDE MTD, (SET TO BE SUB. MAX OPENING FORCE) ADJUST MOUNTING POINTS FOR MIN. 120° ROTATION.	HASER AB850, 1-1 PAIR STAINLESS STEEL MARKER, AGSA ABL0Y HINGE #H23, SUPPORT PIVOT, US26.	SATIN CHROME	
SET #1B	CORRIDOR, STOCKROOM DOOR	NORTON 8850-H, HINGE SIDE MTD, (SET TO BE SUB. MAX OPENING FORCE) ADJUST MOUNTING POINTS FOR MIN. 120° ROTATION.	HASER AB850, 1-1 PAIR STAINLESS STEEL MARKER, AGSA ABL0Y HINGE #H23, SUPPORT PIVOT, US26.	SATIN CHROME	
SET #1C	CORRIDOR, STOCKROOM DOOR	NORTON 8850-H, HINGE SIDE MTD, (SET TO BE SUB. MAX OPENING FORCE) ADJUST MOUNTING POINTS FOR MIN. 120° ROTATION.	HASER AB850, 1-1 PAIR STAINLESS STEEL MARKER, AGSA ABL0Y HINGE #H23, SUPPORT PIVOT, US26.	SATIN CHROME	
SET #1D	TOILET, #2B - MANAGER'S OFFICE	NORTON 8850-H, HINGE SIDE MTD, (SET TO BE SUB. MAX OPENING FORCE) ADJUST MOUNTING POINTS FOR MIN. 120° ROTATION.	HASER AB850, 1-1 PAIR STAINLESS STEEL MARKER, AGSA ABL0Y HINGE #H23, SUPPORT PIVOT, US26.	SATIN CHROME	
SET #1E	EXIT DOOR WITH PANIC HARDWARE	NORTON 8850-H, HINGE SIDE MTD, (SET TO BE SUB. MAX OPENING FORCE) INCL. HOLD OPEN CLOSER, TYP. OF 1. NEW CLOSER TO BE INSTALLED ON ALL (E) DOORS. ADJUST MOUNTING POINTS FOR MIN. 120° ROTATION.	HASER AB850, 1-1 PAIR STAINLESS STEEL MARKER, AGSA ABL0Y HINGE #H23, SUPPORT PIVOT, US26.	SATIN CHROME	



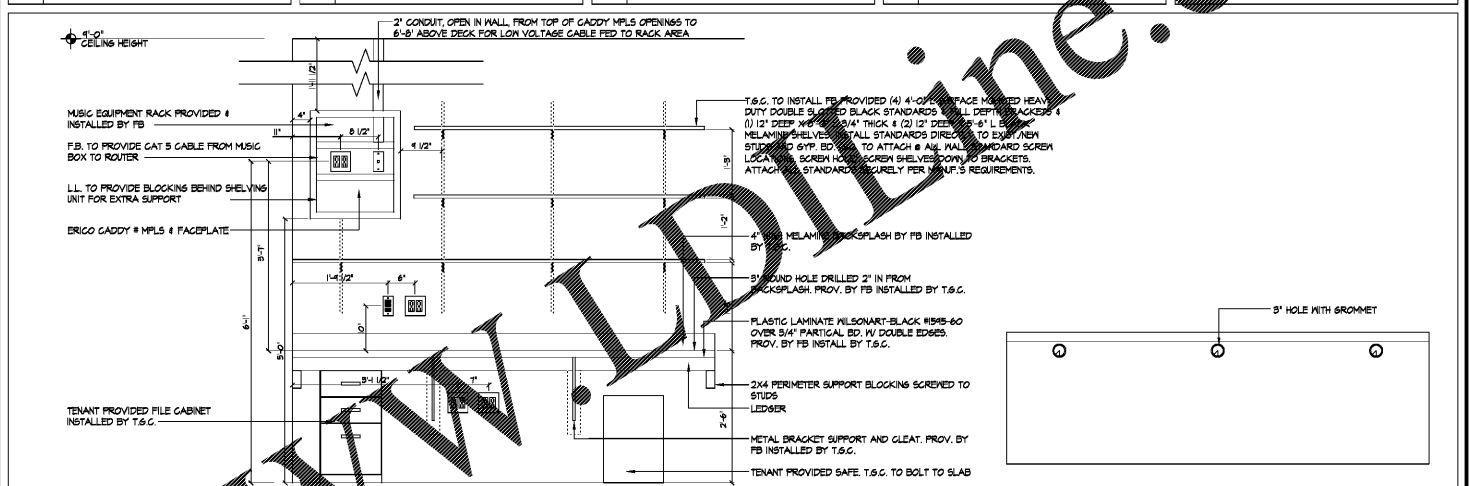
6 CORNER FILLER DTL-1

7 CORNER FILLER DTL-2

8 STOCK SHELF ELEV.

8A STOCK SHELF BRACING

8B BEVERAGE SHELF ELEV.



9 MANAGER'S DECK ELEVATION/ PLAN VIEW

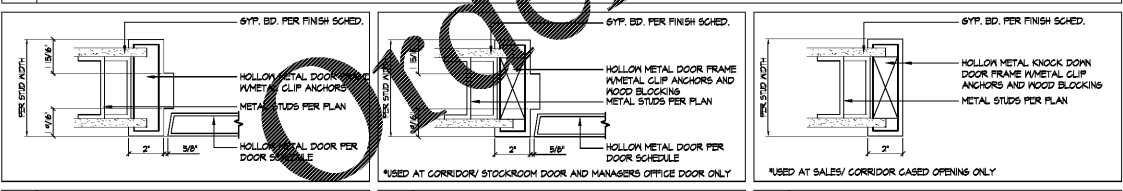
SCALE 1"=1'-0"

SET #	LOCATION	DOOR TYPE	HARDWARE	FINISH	REMARKS
SET #4	ENTRY DOORS	NORTON 8850-H OR APPROVED EQ. ADJUST MOUNTING POINTS FOR MIN. 120° ROTATION. NEW CLOSER TO BE INSTALLED ON ALL (E) DOORS.	HASER AB850, 1-1 PAIR STAINLESS STEEL MARKER, AGSA ABL0Y HINGE #H23, SUPPORT PIVOT, US26.	SATIN CHROME	
SET #5	EXTERIOR ROLL-UP DOOR	COILING STEEL DOOR BY OVERHEAD DOOR - SERIES 625 24 GAUGE DOOR IN FACTORY GRAY BAKED ENAMEL.	HASER AB850, 1-1 PAIR STAINLESS STEEL MARKER, AGSA ABL0Y HINGE #H23, SUPPORT PIVOT, US26.	SATIN CHROME	

2 DOOR HARDWARE SPECS

DOOR NO.	LOCATION	DOOR TYPE	THICKNESS	MATERIAL	LABEL	DOOR SIZE	FRAME	FINISHES	HARDWARE SET	REMARKS
1	STOREFRONT ENTRY	N/A	N/A	STOREFRONT	-	(2) 5'-0" x 8'-0"	-	CLEAR ANODIZED	#4	SUPPLIED & INSTALLED BY T.S.G.
2	SALES/CORRIDOR	N/A	N/A	W/A	-	5'-0" x 8'-0" CASSED OPENING	4B/A5.0	P-2	#1	SUPPLIED & INSTALLED BY L.L.
3	TOILET ROOM	1 3/4"	1 3/4"	HOLLOW METAL	-	5'-0" x 6'-8"	4/A5.0	P-2	#2	SUPPLIED & INSTALLED BY L.L.
4	TOILET ROOM	1 3/4"	1 3/4"	HOLLOW METAL	-	5'-0" x 6'-8"	4/A5.0	P-2	#2	SUPPLIED & INSTALLED BY L.L.
5	ESSRESS DOOR	1 3/4"	1 3/4"	HOLLOW METAL	-	4'-0" x 8'-0"	4A/A5.0	P-2	#3	SUPPLIED & INSTALLED BY L.L.
6	CORRIDOR/STOCK	1 3/4"	1 3/4"	HOLLOW METAL	-	2'-0" x 8'-0" & 4'-0" x 8'-0"	4A/A5.0	P-2	#4	SUPPLIED & INSTALLED BY L.L.
7	MANAGER'S OFFICE	1 3/4"	1 3/4"	HOLLOW METAL	-	5'-0" x 6'-8"	4A/A5.0	P-2	#5	SUPPLIED & INSTALLED BY L.L.
8	OVERHEAD ROLL-UP DOOR	-	-	STEEL	-	6'-0" x 8'-0"	5A/A5.0	P-2	#6	SUPPLIED & INSTALLED BY L.L.

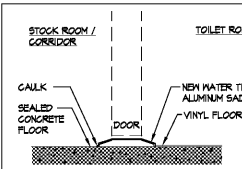
3 DOOR SCHEDULE



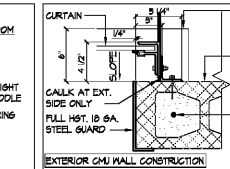
4 JAMB/HEAD DTL. SCALE 3/4"=1'-0"

4A JAMB/HEAD DTL. SCALE 3/4"=1'-0"

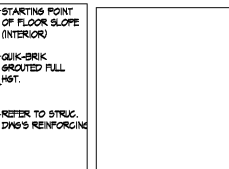
4B JAMB/HEAD DTL. SCALE 3/4"=1'-0"



5 TRANS. DTL. SCALE 1/2"=1'-0"



5A JAMB DTL. SCALE 1/2"=1'-0"



OPEN

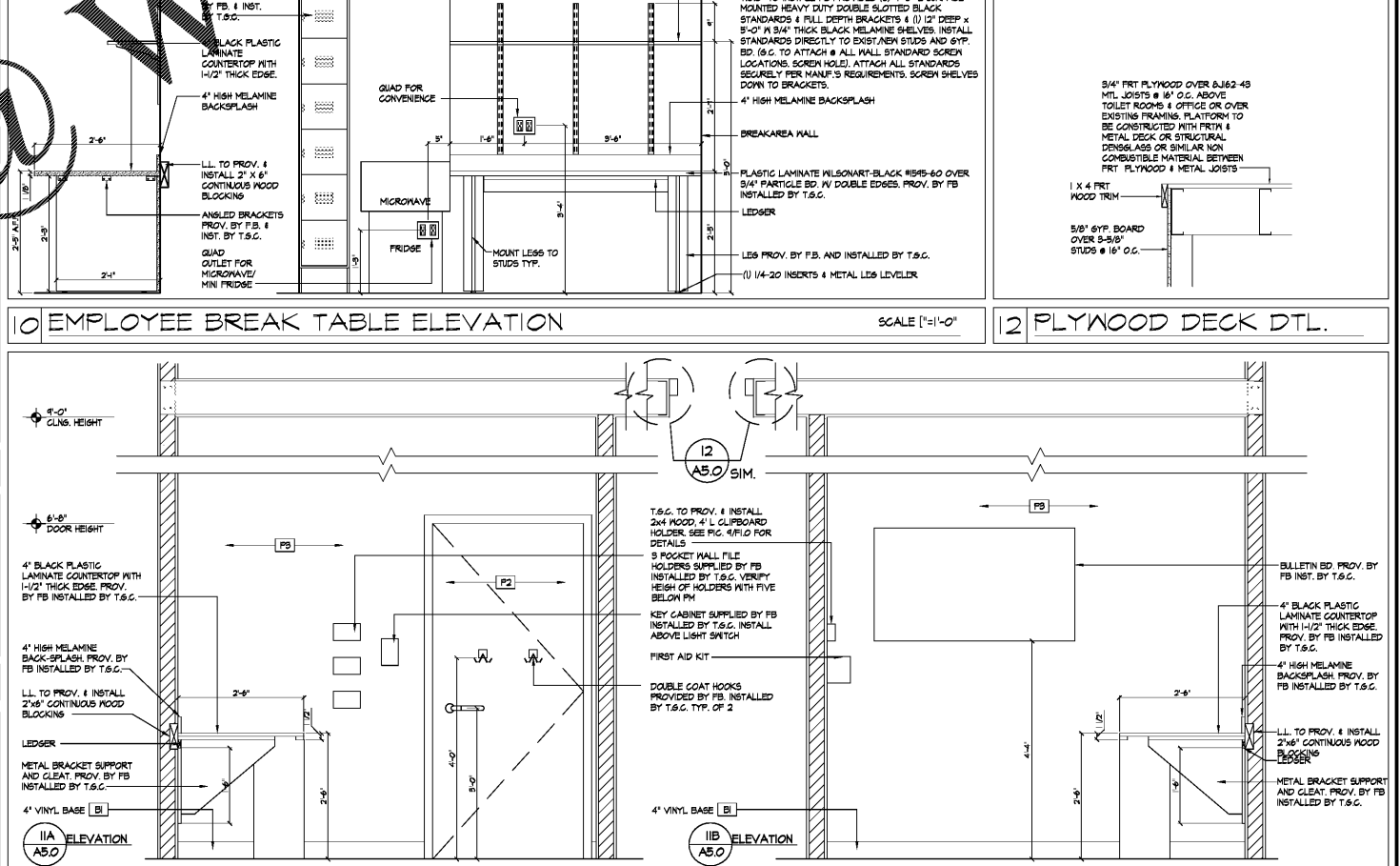


OPEN

10 EMPLOYEE BREAK TABLE ELEVATION

SCALE 1"=1'-0"

12 PLYWOOD DECK DTL.



11 MANAGERS ROOM ELEVATION

SCALE 1"=1'-0"

FREDERICK J. GOGLIA
 ARCHITECT, NCARB, FCI
 1560 CHANG ROAD, SUITE 300
 ST. LOUIS, MO 63106
 PH: (314) 467-2400 FAX: (314) 467-2000
 www.fjg.com

ENGINEER

ARCHITECTURAL SEAL

DATE ISSUE

DATE REVISION NAME

PROJECT NAME / LOCATION

PROJECT INFORMATION

DATE: APRIL 26, 2019

PROJECT NO. 190219

DELIVERY TYPE: V-BOX

DRAWN: BLH

CHECKED: TMO

SHEET TITLE / NUMBER

DOOR SCHEDULE, OFFICE, BREAK TABLE, NOTES & DETAILS

A5.0

Order Plans @ www.fjg.com