

ENGINEER

ARCHITECTURAL SEAL

DATE ISSUE

00/00/19 PERMIT / OWNER

DATE REVISION NAME

PROJECT NAME / LOCATION

**five BELOW**  
 THE PROMENADE  
 3942 PROMENADE PARKWAY  
 D'BERVILLE, MS 39540

PROJECT INFORMATION

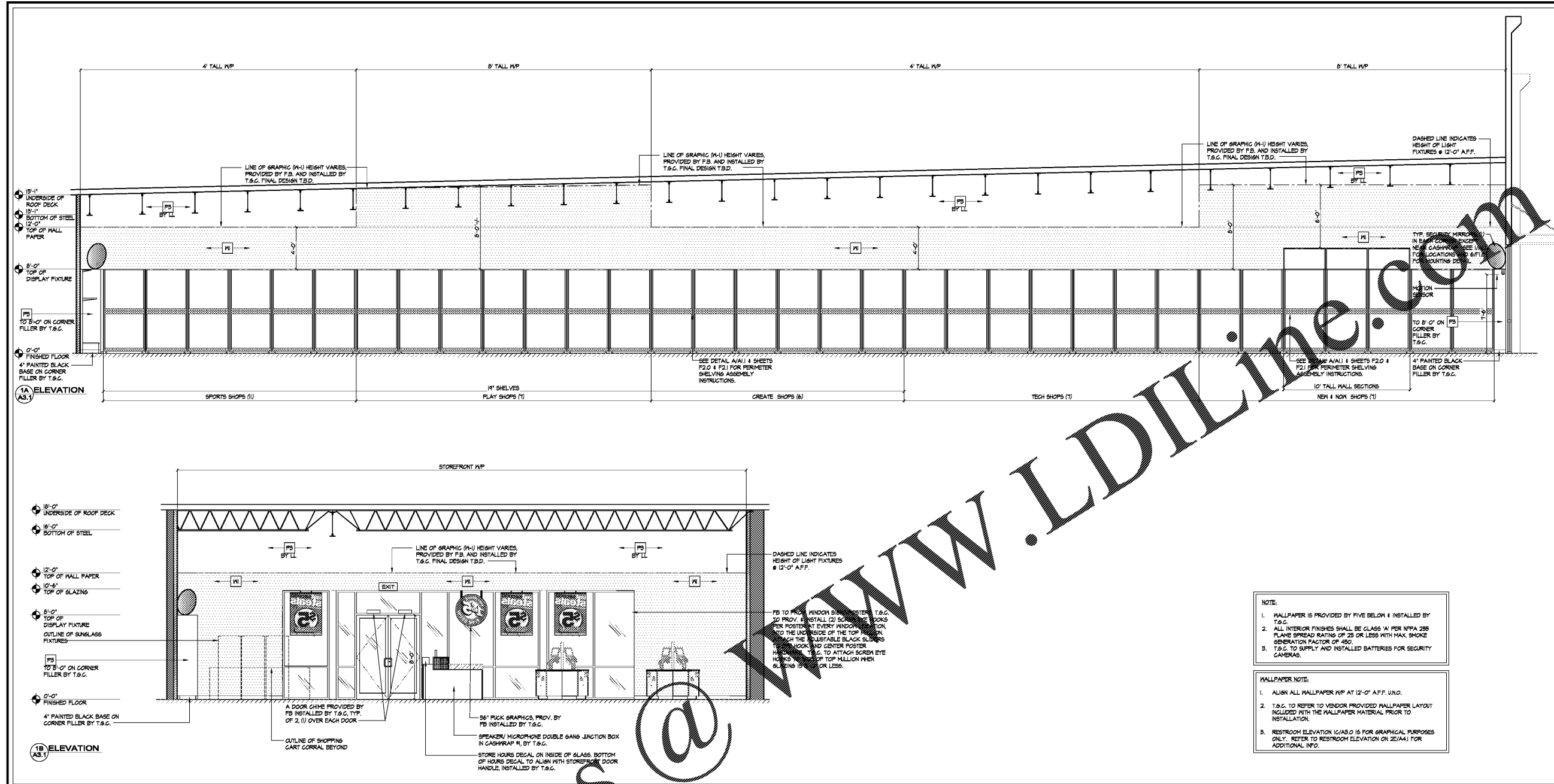
DATE: APRIL 26, 2019  
 PROJECT NO. 190219  
 DELIVERY TYPE: V-BOX

DRAWN: RLH  
 CHECKED: THG

SHEET TITLE / NUMBER

INTERIOR ELEVATIONS

**A3.1**

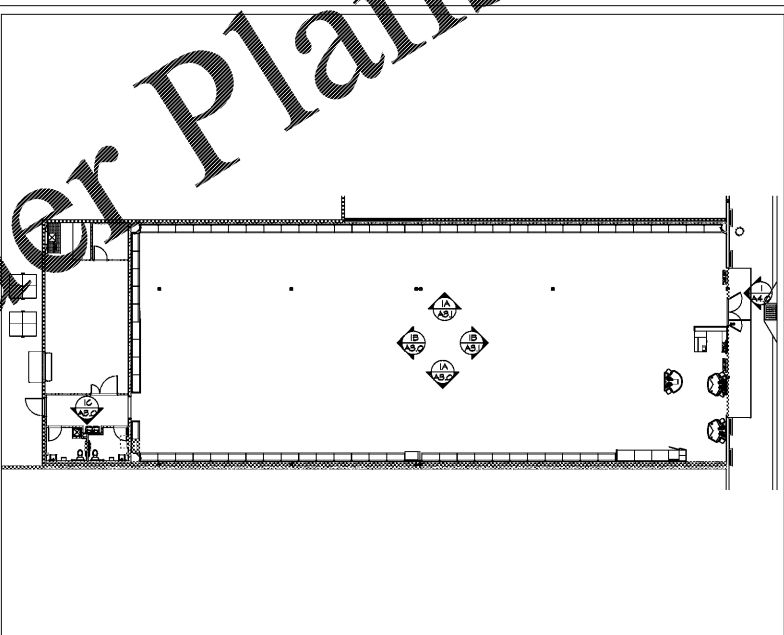


- NOTE:
1. WALLPAPER IS PROVIDED BY FIVE BELOW & INSTALLED BY T.S.G.
  2. ALL INTERIOR FINISHES SHALL BE CLASS 'A' PER NFPA 285 FLAME SPREAD RATING OF 25 OR LESS WITH MAX SMOKE GENERATION FACTOR OF 450.
  3. T.S.G. TO SUPPLY AND INSTALL BATTERIES FOR SECURITY CAMERAS.
- WALLPAPER NOTE:
1. ALIGN ALL WALLPAPER W/P AT 12'-0" AFF. UNG.
  2. T.S.G. TO REFER TO VENDOR PROVIDED WALLPAPER LAYOUT INCLUDED WITH THE WALLPAPER MATERIAL PRIOR TO INSTALLATION.
  3. RESTROOM ELEVATION 1C/AS.0 IS FOR GRAPHICAL PURPOSES ONLY. REFER TO RESTROOM ELEVATION ON 2E/AA.1 FOR ADDITIONAL INFO.

INTERIOR ELEVATIONS

SCALE: 1/4" = 1'-0"

FINISH	DESCRIPTION / MATERIAL	MANUFACTURER	SPEC / FINISH	COLOR #
<b>FLOORING / BASE FINISH</b>				
F1	POLISHED CONCRETE OVER (E) CONCRETE SLAB	QUESTMARK CONC. POLISHING SYSTEM	SALES AREA CORRIDOR AREA	N/A
F2	12" x 12" x 1/8" VCT	ARMSTRONG	FIELD GRAY / 585 5-SUB ADHESIVE	51421
F3	POLISHED CONCRETE OVER (E) CONCRETE SLAB	QUESTMARK CONC. POLISHING SYSTEM	STOCK ROOM AREA	N/A
F4	18" x 18" x 1/8" LUXURY VINYL TILE (LVT)	TANDUS GENIYA	CONTOUR SOAPSTONE	10712
F5	6" x 8 1/2" x 1/8" BLAD SHEET VINYL FLOORING	ARMSTRONG	WHITE GLIFFS 5-SUB ADHESIVE	88102
F6	12" x 12" x 3/16" GRATING TILE	TILE - DELTILE	TILE - VANILLA GROUT - ALABASTER	0123 (1)
F7	1/4" GROUT JOINTS	MAPEI		
F8	4" VINYL BASE	ARMSTRONG	JET BLACK	1
<b>CEILING FINISH</b>				
C1	MTL/WOOD DECK - OPEN TO JOISTS ABOVE - NO HUNG GLS	SHERVIN WILLIAMS	WATERBORNE DRY-FALL LOW VOC - FLAT SHEEN	51421
C2	24" x 48" ACOUSTIC CEILING SYSTEM	ARMSTRONG	CORTESA	141
C3	GYPSUM BOARD CEILING LEVEL 5 FINISH	SHERVIN WILLIAMS	PROMAR 200 ZERO VOC 500-SHELL SHEEN	1008
<b>WALL FINISH</b>				
W1	PURE WHITE PAINT	SHERVIN WILLIAMS	WATERBORNE DRY-FALL LOW VOC - FLAT SHEEN	51421
W2	PURE WHITE PAINT	SHERVIN WILLIAMS	PROMAR 200 ZERO VOC 500-SHELL SHEEN	1008
W3	PURE WHITE PAINT	SHERVIN WILLIAMS	PROMAR 200 ZERO VOC 500-SHELL SHEEN	1008
W4	WALLPAPER	VISION INTEGRATED GRAPHICS	CUSTOM	N/A
<b>STOREFRONT FINISH</b>				
SP1	STOREFRONT EPS SYSTEM 1" MIN. DEPTH	DRYVIT	TYVE BELLOTT BLUE SIGNAGE EPS	FIBE-010215
SP2	STOREFRONT EPS SYSTEM 2" MIN. DEPTH	DRYVIT	'OYSTER SHELL' PRIMARY FACADE	456
SP3	STOREFRONT EPS 2"x4" FRAME 4" MIN. EPS CORNICE	DRYVIT	'ORNA WHITE' FRAME AROUND BLUE	310
SP4	STOREFRONT EPS SYSTEM 2" MIN. DEPTH	DRYVIT	'AMARELLO WHITE' PLASTER	113
SP5	STOREFRONT EPS SYSTEM 2" MIN. DEPTH	DRYVIT	SOS LIGHTER 'OYSTER SHELL' PRIMARY FACADE	FIBE-081021
SP6	STOREFRONT EPS SYSTEM 2" MIN. DEPTH	DRYVIT	SOS DARKER 'OYSTER SHELL' PRIMARY FACADE	FIBE-081021
SP7	STOREFRONT BRACE METAL BASE GLAZING	ALPOLIC OR SIM.	FIVE BELOW BLUE	16V BLUE
SP8	STOREFRONT BRACE METAL BASE GLAZING	ALPOLIC OR SIM.	BRUSHED CLEAR ANODIZED	N/A



SCALE: N.T.S.

C OPEN

D OPEN

A FINISHES LEGEND/ NOTES

B KEY PLAN