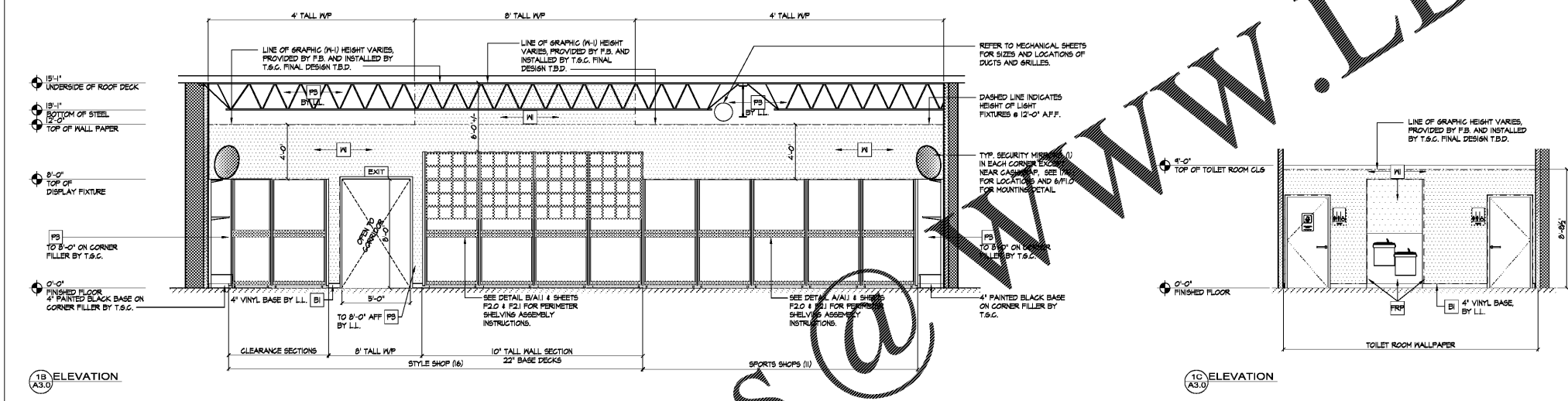
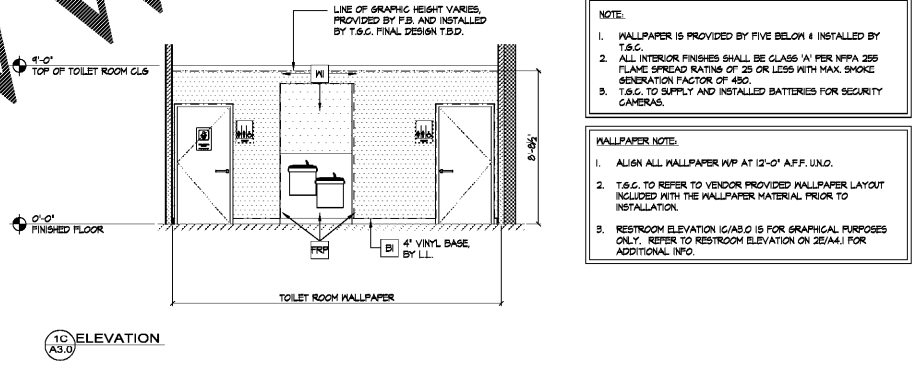


1A ELEVATION  
 (A3.0)



1B ELEVATION  
 (A3.0)



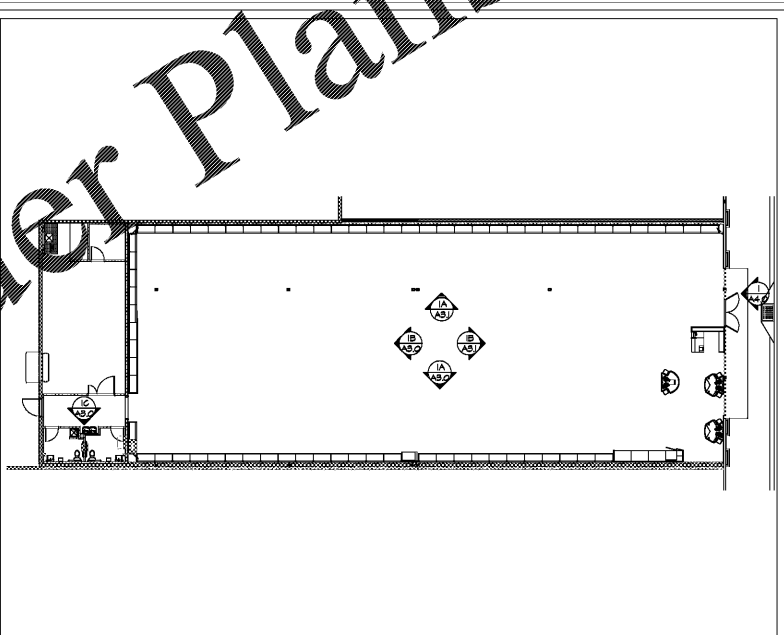
1C ELEVATION  
 (A3.0)

- NOTE:**
1. WALLPAPER IS PROVIDED BY FIVE BELOW & INSTALLED BY T.S.G.
  2. ALL INTERIOR FINISHES SHALL BE CLASS 1' PER NFPA 258 (FLAME SPREAD RATING OF 25 OR LESS WITH MAX. SMOKE GENERATION FACTOR OF 450).
  3. T.S.G. TO SUPPLY AND INSTALL BATTERIES FOR SECURITY CAMERAS.
- WALLPAPER NOTE:**
1. ALIGN ALL WALLPAPER W/P AT 12'-0" AFF. UNO.
  2. T.S.G. TO REFER TO VENDOR PROVIDED WALLPAPER LAYOUT INCLUDED WITH THE WALLPAPER MATERIAL PRIOR TO INSTALLATION.
  3. RESTROOM ELEVATION (C/A3.0) IS FOR GRAPHICAL PURPOSES ONLY. REFER TO RESTROOM ELEVATION ON 25(AA.1) FOR ADDITIONAL INFO.

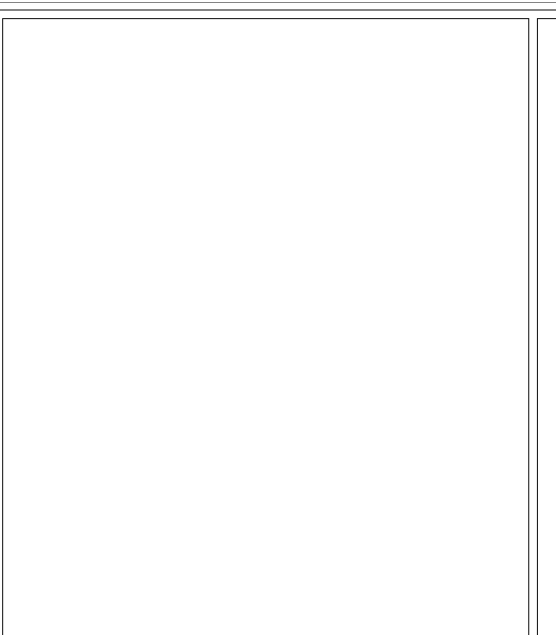
**INTERIOR ELEVATIONS**

SCALE: 1/4" = 1'-0"

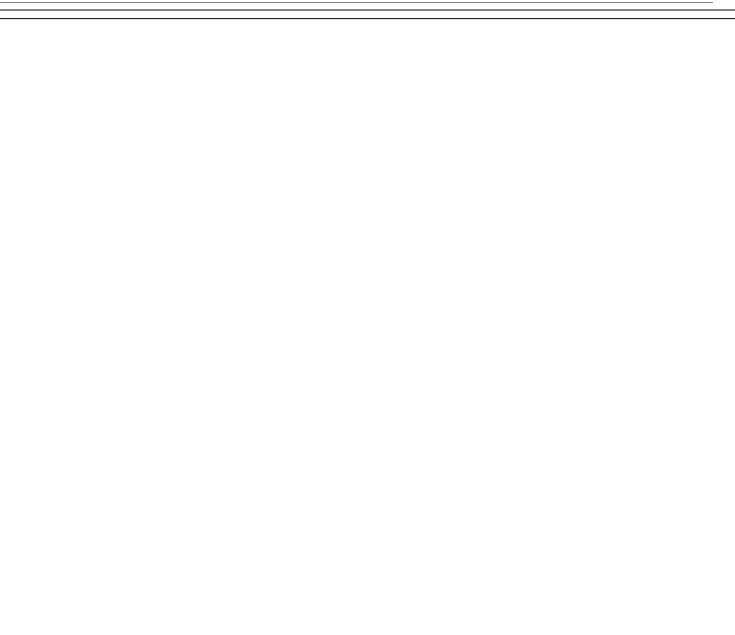
FINISH	DESCRIPTION / MATERIAL	MANUFACTURER	SPEC / FINISH	COLOR #
<b>FLOORING / BASE FINISH</b>				
F1	POLISHED CONCRETE OVER (E) CONCRETE SLAB	GUESTMARK CONC. POLISHING SYSTEM	SALES AREA CORRIDOR AREA	N/A
F2	12' x 12' x 1/8" VCT	ARMSTRONGS	FIELD GRAY / 6515 5-SIS ADHESIVE	5H21
F3	POLISHED CONCRETE OVER (E) CONCRETE SLAB	GUESTMARK CONC. POLISHING SYSTEM	STOCK ROOM AREA	N/A
F4	18' x 18' x 1/8" LUXURY VINYL TILE (LVT)	TANOUS GENOVA	CONTOUR SOAPSTONE	8072
F5	6' x 6 1/2' x 1/8" INLaid SHEET VINYL FLOORING	ARMSTRONGS	WHITE GLIFFS 5-548 ADHESIVE	88702
F6	12' x 12' x 5/16" CERAMIC TILE 1/4" GROUT JOINTS	DELTA TILE	TILE - VANILLA GROUT - ALKASTAR	0423 (1)
B1	4" VINYL BASE	ARMSTRONGS	LET BLACK	
<b>CEILING FINISH</b>				
C1	MTL WOOD DECK - OPEN TO JOISTS ABOVE - NO HUNG CLS	SHERVIN WILLIAMS	WATERBORNE DRYTALL LOW VOC - FLAT SHEEN	1005
C2	24" x 48" ACOUSTIC CEILING SYSTEM	ARMSTRONGS	CORTESA	141
C3	GYPSUM BOARD CEILING LEVEL 5 FINISH	SHERVIN WILLIAMS	PROMAR 205 ZERO VOC 566-SHELL GREEN	5H-1005
<b>WALL FINISH</b>				
P1	PURE WHITE PAINT	SHERVIN WILLIAMS	WATERBORNE DRYTALL LOW VOC - FLAT SHEEN	5H-1005
P2	PURE WHITE PAINT	SHERVIN WILLIAMS	PROMAR 205 ZERO VOC SEMI-GLOSS	5H-1005
P3	PURE WHITE PAINT	SHERVIN WILLIAMS	PROMAR 205 ZERO VOC 566-SHELL GREEN	5H-1005
M1	WALLPAPER	VISION INTEGRATED GRAPHICS		N/A
<b>STOREFRONT FINISH</b>				
SP1	STOREFRONT EIFS SYSTEM 1" MIN. DEPTH	DRYVIT OUTSULATION PLUS MD	'FIVE BELOW' BLUE SHIMANE EIFS	FIBE-010215
SP2	STOREFRONT EIFS SYSTEM 2" MIN. DEPTH	DRYVIT OUTSULATION PLUS MD	'OYSTER SHELL' PRIMARY FACADE	486
SP3	STOREFRONT EIFS SYSTEM 2" MIN. DEPTH	DRYVIT OUTSULATION PLUS MD	'CHINA WHITE' FRAME AROUND BLUE	310
SP4	STOREFRONT EIFS SYSTEM 2" MIN. DEPTH	DRYVIT OUTSULATION PLUS MD	'AMARILLO WHITE' PLASTER	118
SP5	STOREFRONT EIFS SYSTEM 2" MIN. DEPTH	DRYVIT OUTSULATION PLUS MD	SOS LIGHTER 'OYSTER SHELL' PRIMARY FACADE	FIBE-081021
SP6	STOREFRONT EIFS SYSTEM 2" MIN. DEPTH	DRYVIT OUTSULATION PLUS MD	SOS DARKER 'OYSTER SHELL' PRIMARY FACADE	FIBE-081021
SP7	STOREFRONT BRAKE METAL	ALPOLIG OR SIM.	FIVE BELOW BLUE	MBU BLUE
SP8	STOREFRONT BRAKE METAL BASE GLASSING	ALPOLIG OR SIM.	BRUSHED CLEAR ANODIZED	N/A



B KEY PLAN  
 SCALE: N.T.S.



C OPEN



D OPEN

A FINISHES LEGEND/ NOTES

ENGINEER	
ARCHITECTURAL SEAL	
DATE ISSUE	
00/00/19	PERMIT / OWNER
DATE	REVISION
PROJECT NAME / LOCATION	
<b>five below</b>	
THE PROMENADE 3942 PROMENADE PARKWAY D'IBERVILLE, MS 39540	
PROJECT INFORMATION	
DATE: APRIL 26, 2019	
PROJECT NO. 190219	
DELIVERY TYPE: V-BOX	
DRAWN: BLH	
CHECKED: TMO	
SHEET TITLE / NUMBER	
INTERIOR ELEVATIONS	
<b>A3.0</b>	