



STARBUCKS COFFEE COMPANY
2401 UTAH AVENUE SOUTH
SEATTLE, WASHINGTON 98134
(206) 318-1575

THESE DRAWINGS AND SPECIFICATIONS ARE CONFIDENTIAL AND SHALL REMAIN THE SOLE PROPERTY OF STARBUCKS CORPORATION, WHICH IS THE OWNER OF THE COPYRIGHT IN THIS WORK. THEY SHALL NOT BE REPRODUCED IN WHOLE OR IN PART, SHARED WITH THIRD PARTIES OR USED IN ANY MANNER ON OTHER PROJECTS OR EXTENSIONS TO THIS PROJECT WITHOUT THE PRIOR WRITTEN CONSENT OF STARBUCKS CORPORATION. THESE DRAWINGS AND SPECIFICATIONS ARE INTENDED TO EXPRESS DESIGN INTENT FOR A PROTOTYPICAL STARBUCKS STORE (WHICH IS SUBJECT TO CHANGE AT ANY TIME) AND DO NOT REFLECT ACTUAL SITE CONDITIONS. NEITHER PARTY SHALL HAVE ANY OBLIGATION NOR LIABILITY TO THE OTHER EXCEPT STATED ABOVE UNTIL A WRITTEN AGREEMENT IS FULLY EXECUTED BY BOTH PARTIES.

STARBUCKS TEMPLATE VERSION: 2018.10.16

MJM ARCHITECTS
ARCHITECTURE
PLANNING
INTERIORS
GRAPHICS
112 4TH AVENUE SOUTH
NASHVILLE, TN 37203
615.244.8175
615.244.8141
www.mjm-arch.com



PROJECT NAME:
CUSICK & ALCOA

PROJECT ADDRESS:
121 CUSICK ROAD
ALCOA, TN 37701
BLOUNT COUNTY

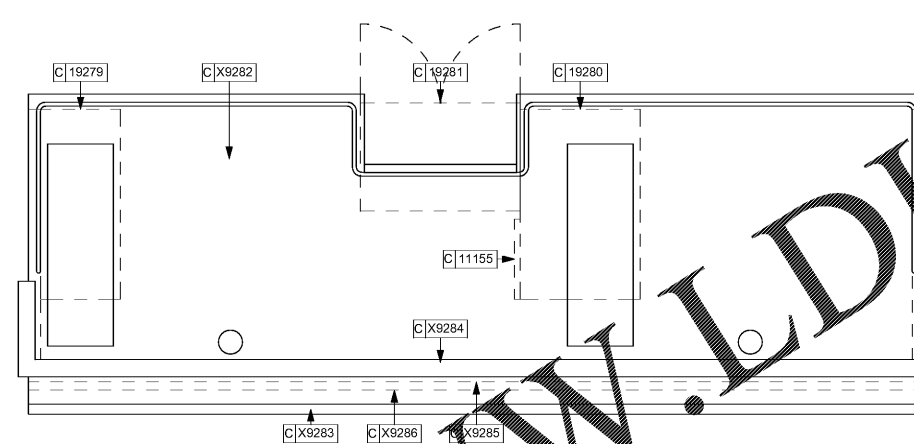
STORE #: 11293
PROJECT #: 36099-035
ISSUE DATE: 04.26.19
DESIGN MANAGER: L. MACEDA
LEED AP: N/A
PRODUCTION DESIGNER: C. POBST
CHECKED BY: MJM

REVISION SCHEDULE			
REV	DATE	BY	DESCRIPTION

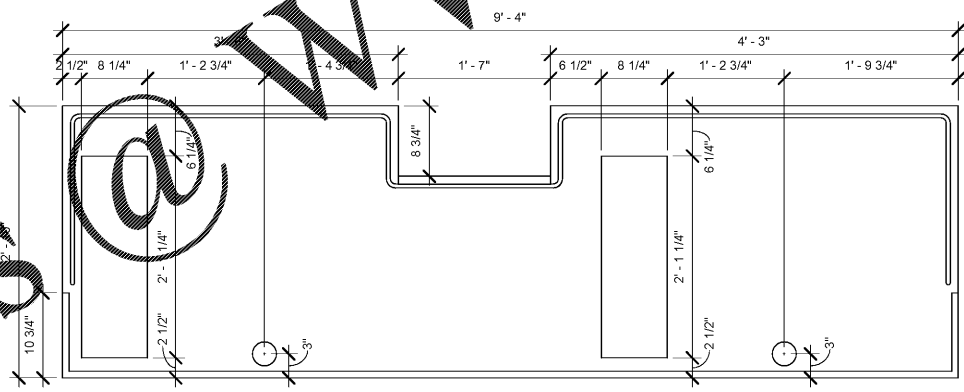
SHEET TITLE:
INTERIOR DETAILS

SCALE: AS SHOWN

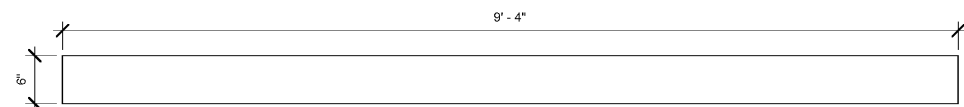
SHEET NUMBER:
1503



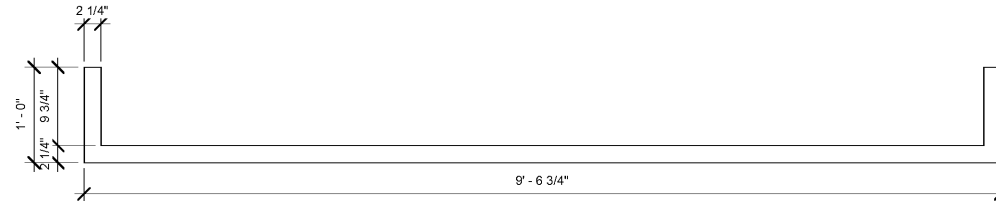
2 CUSTOM ESPRESSO STATION
Scale: 1" = 1'-0"



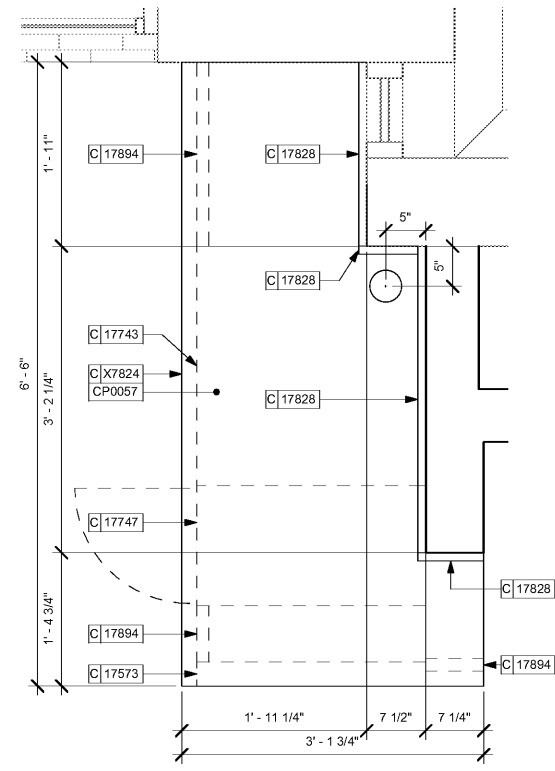
3 X9282 - PLAN
Scale: 1" = 1'-0"



4 X9283 - PLAN
Scale: 1" = 1'-0"



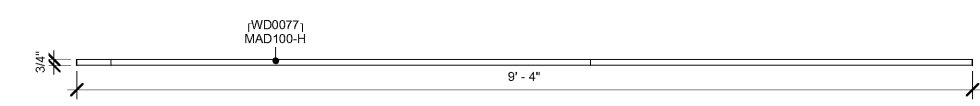
5 X9284 - PLAN
Scale: 1" = 1'-0"



1 CUSTOM DT POS STATION
Scale: 1" = 1'-0"



6 X9285 - PLAN
Scale: 1" = 1'-0"



7 X9286 - PLAN
Scale: 1" = 1'-0"

Order Plans @ WWW.LDILine.com