

WALL TREATMENT (AREA) SCHEDULE - "Q"					
DESIGN ID	AREA	DESCRIPTION	FURN. BY	INST. BY	COMMENTS
PLASTIC					
11428	76 SF	FRP - ALMOND	GC	GC	
TILE					
14529	348 SF	TILE - STARBUCKS GREY - 2X8IN 50X200MM	SB	GC	GROUT: MAPEI - 02 PEWTER, OR EQUAL
18113	398 SF	TILE - PORTRAITS - STROMBOLI STUTTUARTO - 12X24IN 300X600MM	SB	GC	GROUT: MAPEI - 47 CHARCOAL, OR EQUAL
VINYL WALL COVERING					
X6002	453 SF	CUSTOM VINYL WALL COVERING - TRIKES - LANARK VILLA R2-VI-20 GRAPHITE	SB	GC	
X6003	1328 SF	CUSTOM VINYL WALL COVERING - TRIKES - TULLE 2VLL-12 SENDAL	SB	GC	

PAINT SCHEDULE					
COLOR CODE	DESCRIPTION	LRV	FURN. BY	INST. BY	COMMENTS
SW7022	SHERWIN WILLIAMS - SW7022 - ALPACA	57	GC	GC	
SW7048	SHERWIN WILLIAMS - SW7048 - URBANE BRONZE	8	GC	GC	

WALL BASE SCHEDULE - "B"					
DESIGN ID	LENGTH	DESCRIPTION	FURN. BY	INST. BY	COMMENTS
OTHER BASE					
X6002	35' - 2 1/4"	CUSTOM WALK OFF MAT TRIM	GC	GC	TRIM AROUND WALK OFF MAT TO BE 16GA STAINLESS STEEL Z CHANNEL WITH 2B FINISH. DIMS: .625" DEPTH W/ .81" AND 1.81" LEGS
TILE BASE					
13101	35' - 6 1/4"	TILE BASE - PARKLAND - ACADIA - 6X12IN 150X300MM	SB	GC	GROUT: MAPEI - 47 CHARCOAL, OR EQUAL; USE WITH OUTSIDE CORNER TILE 12300

WALL TREATMENT (LENGTH) SCHEDULE - "R"					
DESIGN ID	LENGTH	DESCRIPTION	FURN. BY	INST. BY	COMMENTS
TRIM					
X6002	80' - 0 3/4"	SCHLUTER - QUADEC - CLEAR ANODIZED ALUMINUM	SB	GC	SCHLUTER - QUADEC. FINISH: CLEAR ANODIZED ALUMINUM. TO BE AT ALL TILE OUTSIDE CORNERS.

KEYED NOTES

- 1. SEE INTERIOR DETAILS FOR MORE INFORMATION.

GENERAL NOTES

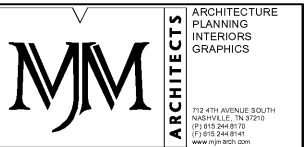
- A. FOR GRAPHICS SCHEDULE, REFER TO THE FURNITURE, FIXTURES, AND EQUIPMENT (FF & E) SCHEDULES ON SHEET I601.
- B. REFER TO MANUFACTURER'S INSTRUCTIONS INCLUDED WITH ARTWORK/GRAPHICS FOR PROPER INSTALLATION.
- C. CHANGE PAINT COLOR ONLY AT INSIDE CORNERS UNLESS OTHERWISE INDICATED.
- D. PAINT FINISHES SHALL BE APPLIED AS FOLLOWS, UNLESS NOTED OTHERWISE:
 - 1) WOODS AND METAL SURFACES SHALL BE SEMI-GLOSS OR EQUAL.
 - 2) ACCENT AND TRIM PAINTS TO BE SEMI-GLOSS OR EQUAL.
 - a. WALL AND CEILING PAINTS TO BE EGGSHELL OR EQUAL.
 - 3) PAINTS IN BOH, RESTROOM(S), CAFE BAR SHALL BE SEMI-GLOSS OR EQUAL.
- E. PAINT SUBSTITUTIONS ARE NOT ALLOWED. USE STARBUCKS NATIONAL ACCOUNT CODE WHEN ORDERING PAINT.
- F. FLOORS, WALLS AND CEILING FINISHES IN FOOD PREPARATION AREAS SHALL BE SMOOTH, NON-TOXIC, NON-ABSORBENT, DURABLE AND EASILY CLEANABLE. PAINT SHALL BE SEMI-GLOSS OR HIGH GLOSS FINISH.
- G. ALL WOOD SURFACES (DOORS, TRIM, SHELVES, METRY) SHALL BE SEALED.
- H. REFER TO CASEWORK FINISH SCHEDULE ON THE CASEWORK FINISH PLAN ON SHEET I102 FOR CASEWORK FINISH MATERIAL INFORMATION.
- I. ALIGN TILE TRANSITIONS ON WHOLE TILES AS SHOWN.
- J. ALL FLOOR AND WALL JUNCTIONS IN STORAGE AND FOOD PREPARATION AREAS SHALL HAVE A 6" COVED BASE.
- K. ALL FOOD STORAGE SHALL BE 6" (150MM) A.F.F.
- L. INSTALL BLOCKING AND HANGERS FOR WALL SHELVING BEFORE INSTALLING BACK BAR TILE.
- M. GENERAL CONTRACTOR TO PROVIDE AND INSTALL WORKROOM WALL FINISHES.



STARBUCKS COFFEE COMPANY
 2401 UTAH AVENUE SOUTH
 SEATTLE, WASHINGTON 98134
 (206) 318-1575

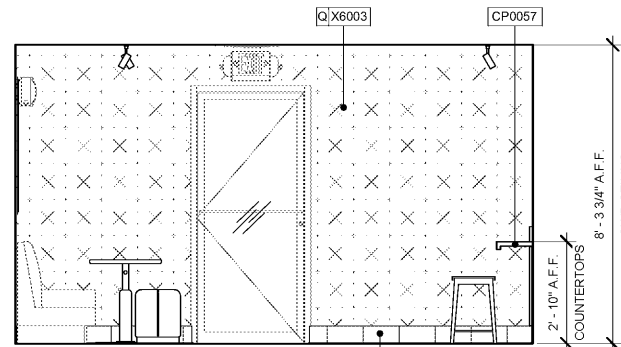
THESE DRAWINGS AND SPECIFICATIONS ARE CONFIDENTIAL AND SHALL REMAIN THE SOLE PROPERTY OF STARBUCKS CORPORATION, WHICH IS THE OWNER OF THE COPYRIGHT IN THIS WORK. THEY SHALL NOT BE REPRODUCED IN WHOLE OR IN PART, SHARED WITH THIRD PARTIES OR USED IN ANY MANNER ON OTHER PROJECTS OR EXTENSIONS TO THIS PROJECT WITHOUT THE PRIOR WRITTEN CONSENT OF STARBUCKS CORPORATION. THESE DRAWINGS AND SPECIFICATIONS ARE INTENDED TO EXPRESS DESIGN INTENT FOR A PROTOTYPICAL STARBUCKS STORE (WHICH IS SUBJECT TO CHANGE AT ANYTIME) AND DO NOT REFLECT ACTUAL SITE CONDITIONS. NEITHER PARTY SHALL HAVE ANY OBLIGATION NOR LIABILITY TO THE OTHER (EXCEPT AS STATED ABOVE) UNTIL A WRITTEN AGREEMENT IS FULLY EXECUTED BY BOTH PARTIES.

STARBUCKS TEMPLATE VERSION I2018.10.16

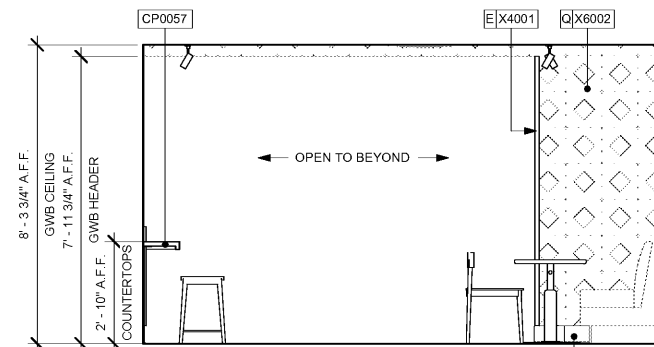


LEGEND

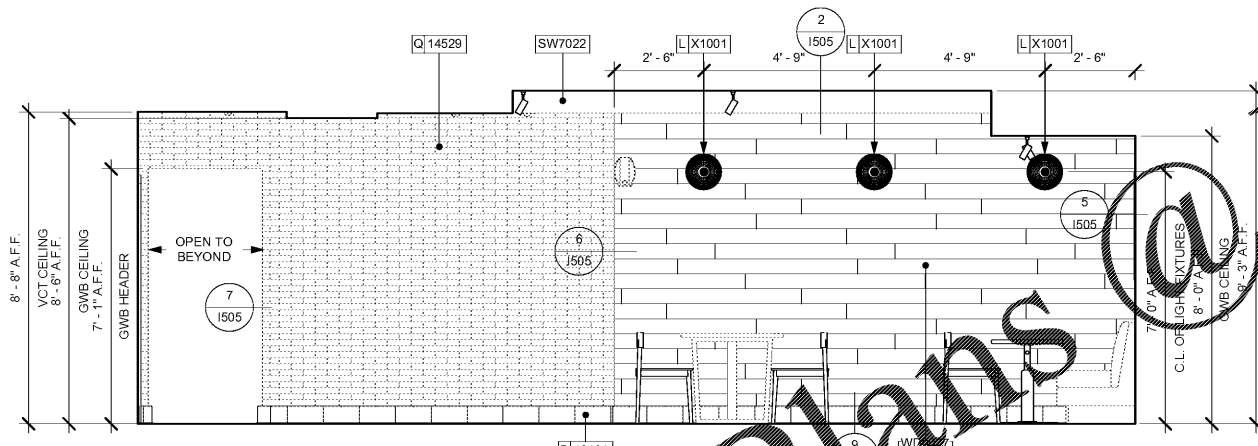
INDICATES WALL BLOCKING. FIRE TREATED WALL BLOCKING TO BE PROVIDED AS REQUIRED TO SUPPORT WALL ATTACHMENTS. EXTEND BLOCKING 4" (100mm) BEYOND EDGE OF ATTACHMENTS.



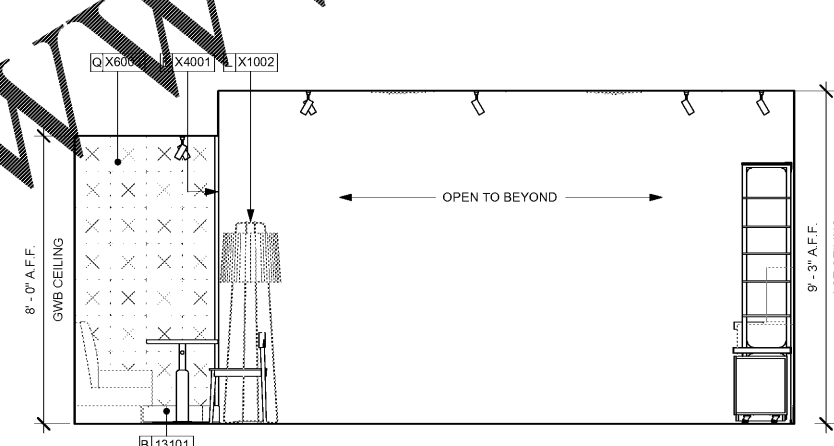
1 CAFE - EXIT AT DRIVE THRU
 Scale: 3/8" = 1'-0"



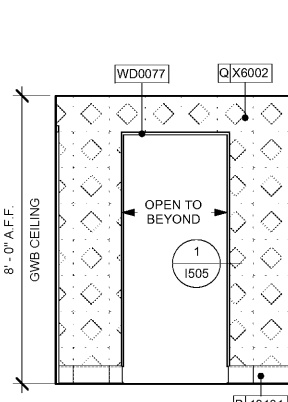
2 CAFE - OTHER SEATING
 Scale: 3/8" = 1'-0"



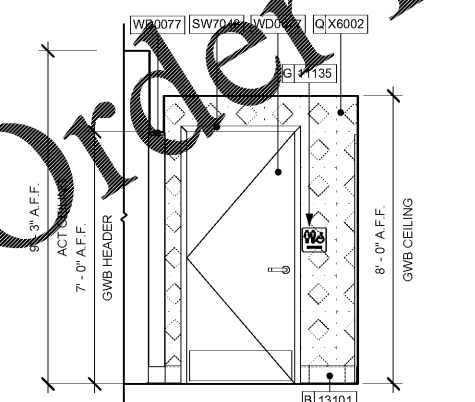
3 CAFE - WOOD WALL
 Scale: 3/8" = 1'-0"



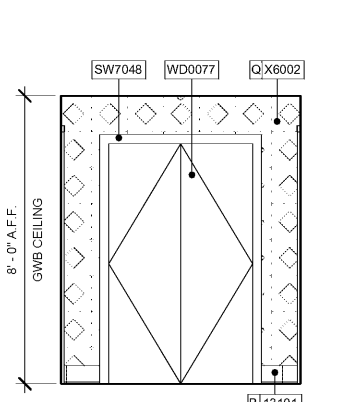
4 CAFE - SOFT SEATING
 Scale: 3/8" = 1'-0"



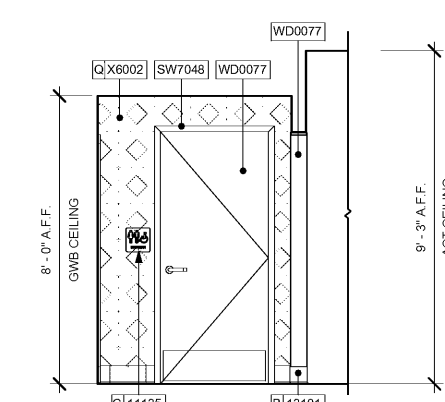
5 VESTIBULE - EXIT
 Scale: 3/8" = 1'-0"



6 VESTIBULE - RESTROOM ENTRY A
 Scale: 3/8" = 1'-0"



7 VESTIBULE - STORAGE
 Scale: 3/8" = 1'-0"



8 VESTIBULE - RESTROOM ENTRY B
 Scale: 3/8" = 1'-0"

Order Plans

WWW.LDILine.com

PROJECT NAME:
CUSICK & ALCOA

PROJECT ADDRESS:
 121 CUSICK ROAD
 ALCOA, TN 37701
 BLOUNT COUNTY

STORE #:	11293
PROJECT #:	36099-035
ISSUE DATE:	04.26.19
DESIGN MANAGER:	L. MACEDA
LEED AP:	N/A
PRODUCTION DESIGNER:	C. POBST
CHECKED BY:	NJM

REVISION SCHEDULE			
REV	DATE	BY	DESCRIPTION

SHEET TITLE:
INTERIOR FINISH ELEVATIONS & SCHED.
 SCALE: AS SHOWN

SHEET NUMBER:
1203