

FLOOR TREATMENT SCHEDULE - "T"					
DESIGN ID	AREA	DESCRIPTION	FURN. BY	INST. BY	COMMENTS
CONCRETE					
17631	1466 SF	CONCRETE - NATURAL	GC	GC	LOCALLY SOURCED
WALK OFF MAT					
19288	39 SF	WALK OFF MAT - HELIX Z1 - BLACK - 12X9IN 305X230MM	SB	GC	

WALL BASE SCHEDULE - "B"					
DESIGN ID	LENGTH	DESCRIPTION	FURN. BY	INST. BY	COMMENTS
OTHER BASE					
X6002	35' - 2 1/4"	CUSTOM WALK OFF MAT TRIM	GC	GC	TRIM AROUND WALK OFF MAT TO BE 16GA STAINLESS STEEL Z CHANNEL WITH 2B FINISH. DIMS: .625" DEPTH W/ .81" AND 1.81" LEGS
TILE BASE					
13101	355' - 6 1/4"	TILE BASE - PARKLAND - ACADIA - 6X12IN 150X300MM	SB	GC	GROUT: MAPEI - 47 CHARCOAL, OR EQUAL; USE WITH OUTSIDE CORNER TILE 12300

**KEYED NOTES**

- EXISTING TO REMAIN (ETR).
- FLOOR SINK LOCATION. SEE BUILDING FLOOR PENETRATION PLAN ON SHEET A102 AND PLUMBING FOR ADDITIONAL INFORMATION.
- RECESSED WALK-OFF MAT AT ENTRY. SEE INTERIOR DETAIL SHEETS FOR TRANSITION.
- ARTWORK ON FLOOR. SEE GRAPHICS AND ARTWORK SCHEDULE FOR DETAILS.

**GENERAL NOTES**

- WORKROOM TO BE FINISHED PER LOCAL CODE REQUIREMENTS.
- FLOORS, WALLS AND CEILING FINISHES IN FOOD PREPARATION AREAS SHALL BE SMOOTH, NON-TOXIC, NON-ABSORBENT, DURABLE AND EASILY CLEANABLE. PAINT SHALL BE WASHABLE; SEMI-GLOSS OR HIGH-GLOSS FINISH.
- STARBUCKS TO SUPPLY RETAIL FLOOR TILE AND TILE BASE. GENERAL CONTRACTOR TO INSTALL. GENERAL CONTRACTOR TO SUPPLY WORKROOM TILE AND BASE AND INSTALL. GENERAL CONTRACTOR TO SUPPLY AND INSTALL MORTAR, ADHESIVE, AND GROUT. GENERAL CONTRACTOR TO INSPECT ALL TILES AND REJECT DAMAGED OR SUBSTANDARD TILES PRIOR TO INSTALLATION.
- ALIGN TILE TRANSITIONS ON WHOLE TILES AS SHOWN.
- ALL FLOOR AND WALL JUNCTIONS IN STORAGE AND FOOD PREPARATION AREAS SHALL HAVE A RECESSED BASE.



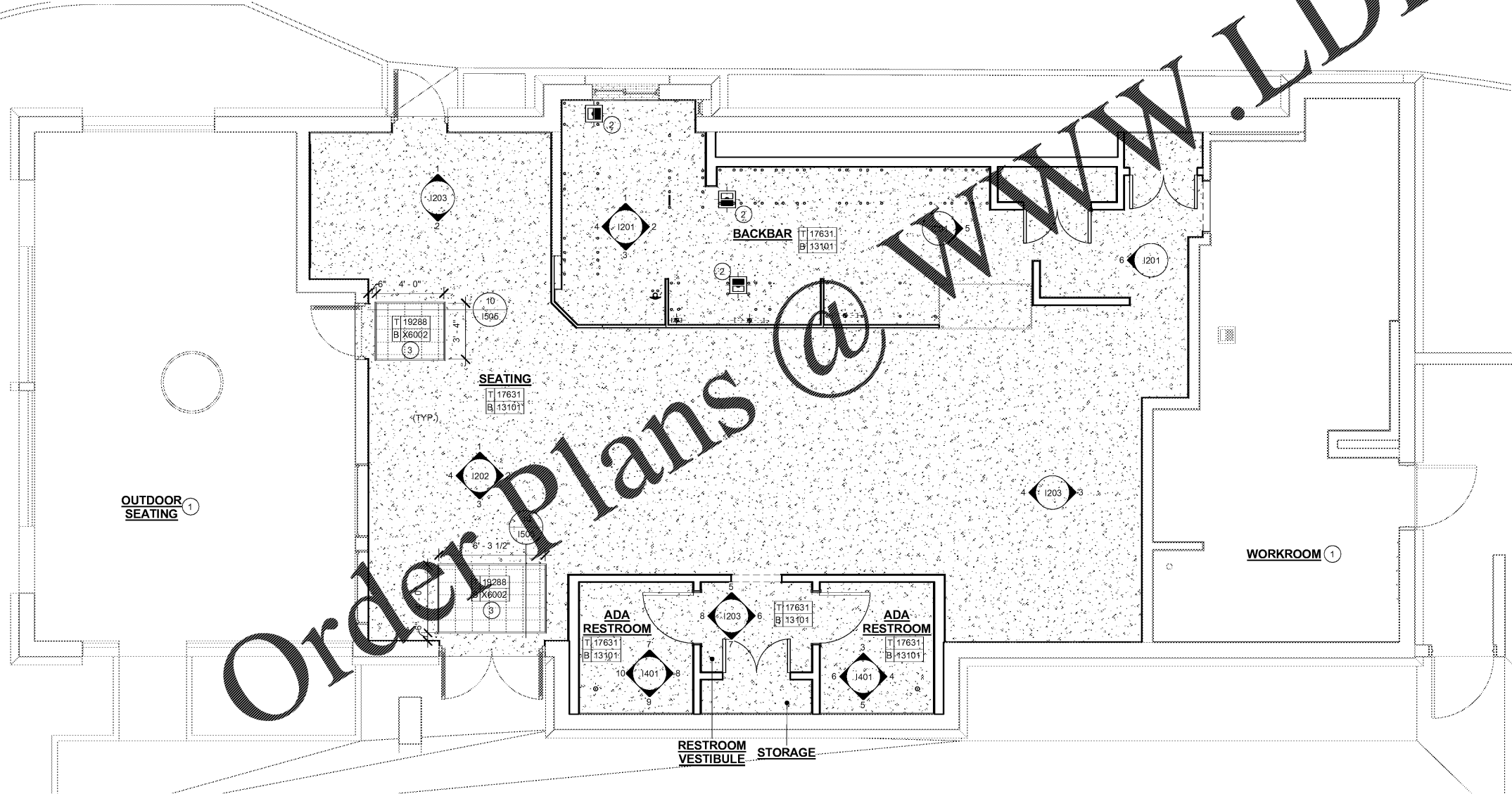
**STARBUCKS COFFEE COMPANY**  
 2401 UTAH AVENUE SOUTH  
 SEATTLE, WASHINGTON 98134  
 (206) 318-1575

THESE DRAWINGS AND SPECIFICATIONS ARE CONFIDENTIAL AND SHALL REMAIN THE SOLE PROPERTY OF STARBUCKS CORPORATION, WHICH IS THE OWNER OF THE COPYRIGHT IN THIS WORK. THEY SHALL NOT BE REPRODUCED IN WHOLE OR IN PART, SHARED WITH THIRD PARTIES OR USED IN ANY MANNER ON OTHER PROJECTS OR EXTENSIONS TO THIS PROJECT WITHOUT THE PRIOR WRITTEN CONSENT OF STARBUCKS CORPORATION. THESE DRAWINGS AND SPECIFICATIONS ARE INTENDED TO EXPRESS DESIGN INTENT FOR A PROTOTYPICAL STARBUCKS STORE (WHICH IS SUBJECT TO CHANGE AT ANYTIME) AND DO NOT REFLECT ACTUAL SITE CONDITIONS. NEITHER PARTY SHALL HAVE ANY OBLIGATION NOR LIABILITY TO THE OTHER (EXCEPT AS STATED ABOVE) UNTIL A WRITTEN AGREEMENT IS FULLY EXECUTED BY BOTH PARTIES.

STARBUCKS TEMPLATE VERSION | 2018.10.16

**MJM ARCHITECTS**  
 ARCHITECTURE  
 PLANNING  
 INTERIORS  
 GRAPHICS

112 4TH AVENUE SOUTH  
 NASHVILLE, TN 37203  
 (615) 244-8175  
 (615) 244-8141  
 www.mjm-arch.com



**1 FLOOR FINISH PLAN**  
 Scale: 1/4" = 1'-0"

PROJECT NAME:  
**CUSICK & ALCOA**

PROJECT ADDRESS:  
 121 CUSICK ROAD  
 ALCOA, TN 37701  
 BLOUNT COUNTY

STORE #:	11293
PROJECT #:	36099-035
ISSUE DATE:	04.26.19
DESIGN MANAGER:	L. MACEDA
LEED AP:	N/A
PRODUCTION DESIGNER:	C. POBST
CHECKED BY:	MJM

REVISION SCHEDULE			
REV	DATE	BY	DESCRIPTION

SHEET TITLE:  
**FLOOR FINISH PLAN**

SCALE: AS SHOWN

SHEET NUMBER:  
**1105**