



STARBUCKS COFFEE COMPANY
 2401 UTAH AVENUE SOUTH
 SEATTLE, WASHINGTON 98134
 (206) 318-1575

THESE DRAWINGS AND SPECIFICATIONS ARE CONFIDENTIAL AND SHALL REMAIN THE SOLE PROPERTY OF STARBUCKS CORPORATION, WHICH IS THE OWNER OF THE COPYRIGHT IN THIS WORK. THEY SHALL NOT BE REPRODUCED IN WHOLE OR IN PART, SHARED WITH THIRD PARTIES OR USED IN ANY MANNER ON OTHER PROJECTS OR EXTENSIONS TO THIS PROJECT WITHOUT THE PRIOR WRITTEN CONSENT OF STARBUCKS CORPORATION. THESE DRAWINGS AND SPECIFICATIONS ARE INTENDED TO EXPRESS DESIGN INTENT FOR A PROTOTYPICAL STARBUCKS STORE (WHICH IS SUBJECT TO CHANGE AT ANYTIME) AND DO NOT REFLECT ACTUAL SITE CONDITIONS. NEITHER PARTY SHALL HAVE ANY OBLIGATION OR LIABILITY TO THE OTHER (EXCEPT AS STATED ABOVE) UNTIL A WRITTEN AGREEMENT IS FULLY EXECUTED BY BOTH PARTIES.

STARBUCKS TEMPLATE VERSION: 2018.10.16

MJM ARCHITECTS
 ARCHITECTURE
 PLANNING
 INTERIORS
 GRAPHICS
 112 4TH AVENUE SOUTH
 NASHVILLE, TN 37203
 (615) 244-8175
 (615) 244-8141
 www.mjm-arch.com



PROJECT NAME:
CUSICK & ALCOA

PROJECT ADDRESS:
121 CUSICK ROAD
ALCOA, TN 37701
BLOUNT COUNTY

STORE #: 11293
 PROJECT #: 36099-035
 ISSUE DATE: 04.26.19
 DESIGN MANAGER: L. MACEDA
 LEED AP: N/A
 PRODUCTION DESIGNER: C. POBST
 CHECKED BY: MJM

REVISION SCHEDULE			
REV	DATE	BY	DESCRIPTION

SHEET TITLE:
CASEWORK PLAN

SCALE: AS SHOWN

SHEET NUMBER:
1102

KEYED NOTES

- INSTALL CASEWORK, COUNTERTOPS, SHELVES, CUBBIES, FINISHES, TRIM AND TABLE TOPS THROUGHOUT. REFERENCE FINISH SCHEDULE AND MANUFACTURER'S SPECIFICATIONS FOR ADDITIONAL INFORMATION.
- ALL COUNTERTOPS UTILIZED FOR CUSTOMER TRANSACTIONS, INCLUDING BAR, CONDIMENT AND SALES COUNTERTOPS SHALL BE INSTALLED AT 2'-10" (860 MM) MAXIMUM A.F.F.
- WALL FINISH BEHIND EXPOSED CABINETRY AND BELOW UNDERSIDE OF COUNTERTOP SUBSTRATE TO BE FRP.
- CASEWORK VENDOR TO ENGINEER PROPER COUNTERTOP SUPPORT AT ESPRESSO BAR AND OTHER WORKSTATIONS PER STARBUCKS MINIMUM PERFORMANCE REQUIREMENTS.
- VARIABLE WIDTH FILLER CABINET / COUNTERTOP REQUIRED TO FILL GAP (FIELD VERIFY DIMENSION). VENDOR TO COORDINATE EXACT DIMENSION WITH GC PRIOR TO INSTALLATION.
- FLOOR SINK BELOW. CASEWORK MANUFACTURER TO COORDINATE DESIGN TO INSURE THIS AREA IS READILY ACCESSIBLE FOR CLEANING AND FREE OF COUNTERTOP SUPPORT.

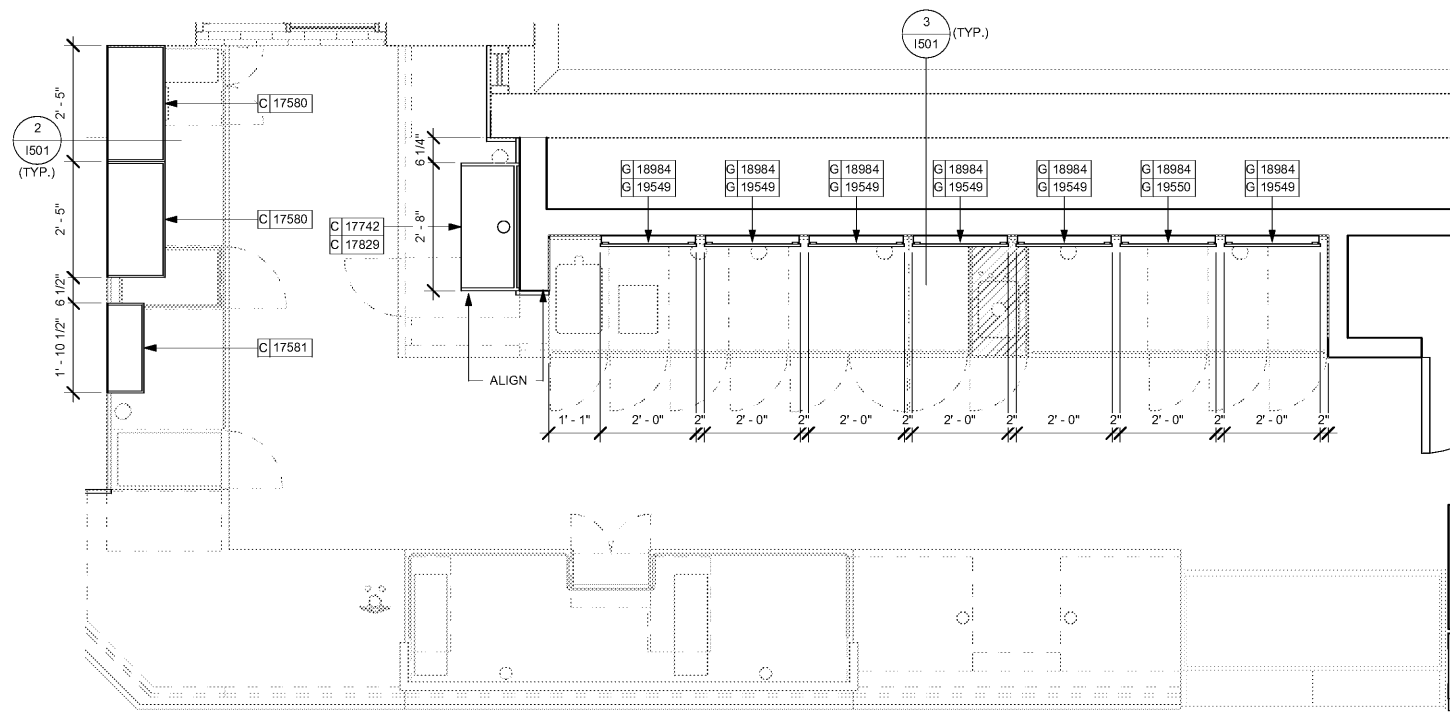
GENERAL NOTES

- GENERAL CONTRACTOR TO NOTIFY CONSTRUCTION MANAGER IMMEDIATELY IF A DISCREPANCY EXISTS BETWEEN CASEWORK SHOP DRAWINGS, EXISTING SITE CONDITIONS, ARCHITECTURAL DRAWINGS OR BUILT FIXTURES. ALL DIMENSIONS SHALL BE FIELD VERIFIED BY GC PRIOR TO SHOP DRAWINGS PRODUCTION.
- STARBUCKS CONSTRUCTION MANAGER TO COORDINATE AND SCHEDULE CASEWORK DELIVERY DATE. GENERAL CONTRACTOR TO CONFIRM CASEWORK DELIVERY DATE WITH CASEWORK MANUFACTURER AT FOUR (4) WEEKS PRIOR AND THEN ONE (1) WEEK PRIOR TO SCHEDULED DATE OF DELIVERY.
- STARBUCKS CONTRACTS DIRECTLY WITH CASEWORK VENDOR TO SUPPLY CASEWORK LISTED IN THE CASEWORK SCHEDULE, UNLESS OTHERWISE NOTED.
- CASEWORK VENDOR TO PROVIDE COMPLETE SHOP DRAWINGS AND INSTALLATION PACKAGE TO GENERAL CONTRACTOR TO FACILITATE PERMITS, INSULATION, ETC.
- ALL CASEWORK BOX BASES (W/ KICKS) SHALL BE SET AND LEVELED USING 1/8" (3.18 MM) NON-ABSORBENT PLASTIC SHIMS PROVIDED BY CASEWORK VENDOR.
- SEE WALL FINISH PLAN FOR LOCATION, TAGGING, AND FINISH SCHEDULES FOR APPLIED WALL TREATMENTS.
- SEE REFLECTED CEILING PLAN FOR CASEWORK SOFFIT LOCATION.

REMOVE PLUMBING AND ELECTRICAL PLANS FOR PLACEMENT OF ELECTRICAL, DATA AND PLUMBING ON FRONT AND BACKLINE OF BAR.

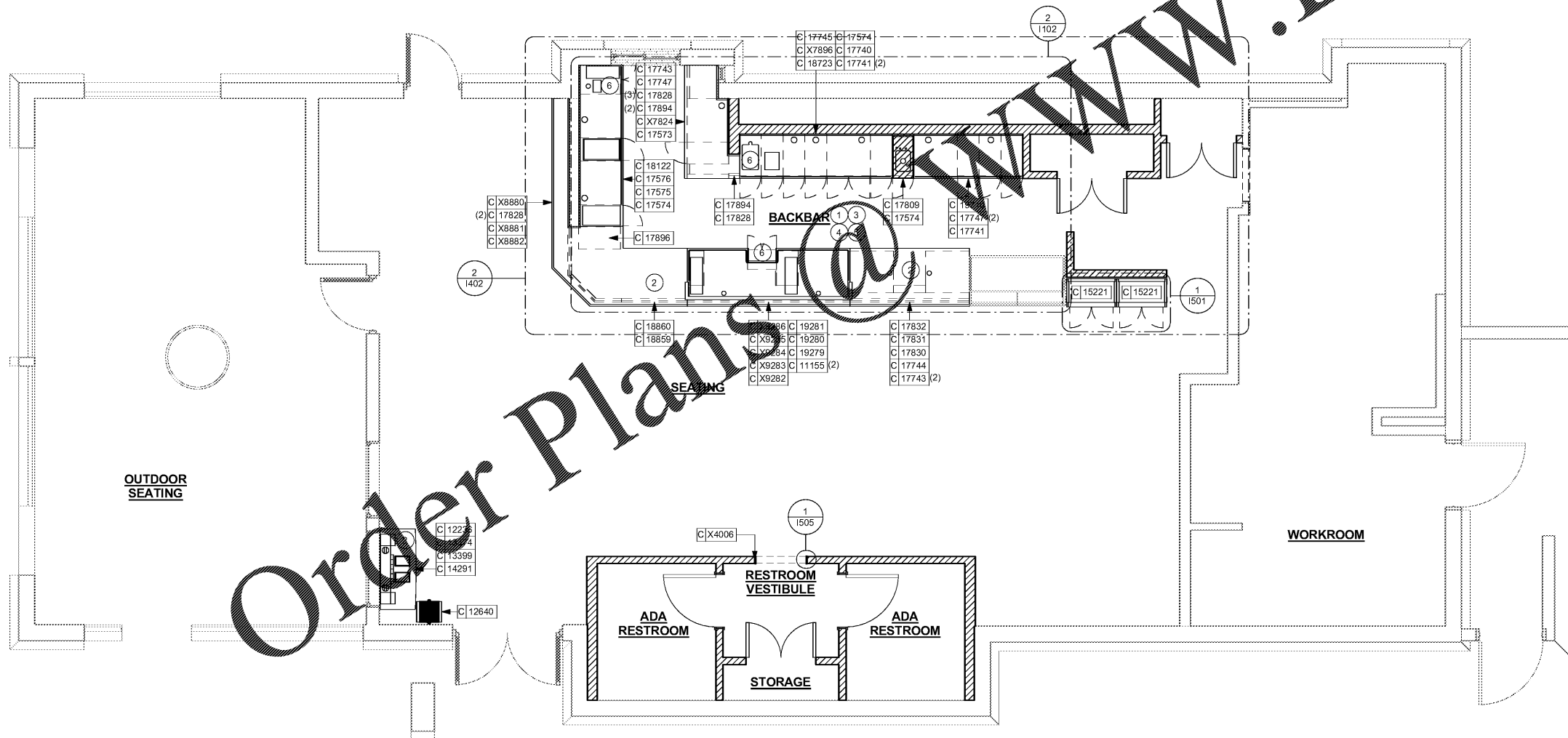
LEGEND

- INDICATES STAINLESS STEEL (SST) COUNTERTOP
- INDICATES SOLID SURFACE (SS) COUNTERTOP
- DATUM POINT
- CASEWORK TAG



2 UPPER CASEWORK PLAN

Scale: 1/2" = 1'-0"



1 CASEWORK PLAN

Scale: 1/4" = 1'-0"

Z:\proj\casestart\1102- Starbucks Coffee Company-Alcoa_TN-Reno-Cusick & Alcoa\Drawings\1102_TN_Cusick & Alcoa_Revit Model.rvt 4/29/2019 2:42:15 PM

Order Plans @ www.LDILine.com



M/JM PROJECT