

**GUESTROOM CONDUIT ROUTING NOTE**

- NOTE THAT A HORIZONTAL CHASE AREA IS TO BE DESIGNATED ABOVE THE RESTROOM AREAS OF THE GUEST UNITS. SEE MECHANICAL PLANS FOR ROUTING LANES. DUCTWORK IS INSTALLED FIRST. COORDINATE WITH MECHANICAL CONTRACTOR FOR TEMPORARILY REMOVING PREVIOUSLY INSTALLED SECTIONS OF DUCTWORK AS NEEDED FOR CABLE ROUTING.

**GUESTROOM FIRE ALARM NOTES**

- FIRE ALARM NOTE FOR ALL ADA ROOMS. PROVIDE A DEDICATED NOTIFICATION APPLIANCE CIRCUIT (NAC) TO EACH ACCESSIBLE SUITE OR ROOM. PROGRAM PANEL SO THAT DEVICES IN EACH ROOM ARE ACTIVATED UPON EITHER LOCAL SMOKE DETECTION IN THAT ROOM ONLY OR GENERAL ALARM. PROVIDE COMPLEX 400N NAC PANEL OR EQUAL TO DRIVE NACS. 400N CAN CONTROL 8 ROOMS.
- GUESTROOM SMOKE DETECTORS MUST BE PHOTOELECTRIC SMOKE DETECTORS WITH SOUNDER BASES AND BOTH POWERED AND MONITORED BY THE FACP PER MARRIOTT'S MODULE 14. SOUNDER BASES SHALL PROVIDE A MINIMUM AUDIBLE ALARM OF 85 DBA AT 10' AND A MINIMUM OF 75 DBA AT THE PILLOW.
- ACTIVATION OF GUESTROOM SMOKE DETECTORS SHALL IMMEDIATELY AND AUTOMATICALLY ACTIVATE AN ALARM IN THE DETECTOR SOUNDER BASE AND SEND A SUPERVISORY SIGNAL TO THE FACP. MULTIPLE DETECTORS IN A SINGLE UNIT SHALL BE INTERCONNECTED. INCLUDE IN SEQUENCE OF OPERATIONS AND ENSURE CORRECT ANNUNCIATION.
- ALL HEARING IMPAIRED ACCESSIBLE DESIGNATED ROOMS SHALL BE PROVIDED WITH AUDIBLE AND VISUAL ALARM STROBES IN THE SLEEPING AREAS AND BATHROOMS. CANDELA RATINGS AND MOUNTING HEIGHTS MUST MEET NFPA 72, 2015, SEC. 18.5.4.8.2.
- STROBES IN HEARING IMPAIRED ROOMS SHALL FACE THE BED. BOTTOM OF THE LENS SHALL BE AT LEAST 80" F.F. CD RATING WILL BE DETERMINED BY THE DISTANCE OF THE ENTIRE LENS BELOW THE CEILING WHILE MAINTAINING THE MINIMUM DISTANCE ABOVE THE FLOOR PER NFPA 72, TABLE 18.5.5.7.2.

**GUESTROOM CIRCUITRY**

FOUR CIRCUIT GUESTROOMS ARE TO BE WIRED AS FOLLOWS:

- 120V CKT #1: RESTROOM
- 120V CKT #2: LIGHTS & RECEPTACLES
- 120V CKT #3: MICROWAVE & REFRIGERATOR
- 120V CKT #4: COFFEE MAKER
- 208V CKT: PTAC UNIT

**ADA COMM DOOR NOTIFICATION**

DOOR NOTIFICATION DEVICE CONTRACTOR TO REFER TO ARCHITECTURAL ENLARGED GUESTROOM PLANS FOR DIMENSIONS OF ALL ELECTRICAL DEVICES AND LIGHT FIXTURES.

PUSH BUTTON TO ACTIVATE DOOR STROBE INSIDE OF GUESTROOM. BUTTON TO BE TURNED ON/OFF BY SWITCH NOTED BELOW. SEE WIRING DIAGRAM ON SHEET E301.

DOOR BELL STROBE - PROVIDE TWO EACH FIRE ALARM SYSTEM STROBE LIGHTS. ONE IN BATHROOM (MOUNTED IN SAME STUD CAVITY WITH DOOR STROBE) AND ONE STROBE IN SLEEPING AREA (MOUNTED IN SAME STUD CAVITY WITH FIRE ALARM STROBE AND SMOKE DETECTOR). AT SUITES, PROVIDE ADDITIONAL STROBE IN 1/2 BATH & BEDROOM.

**GUESTROOM ADA COMMUNICATIONS DEVICES**

- DOORBELL - PUSH BUTTON TO ACTIVATE DOOR STROBE INSIDE OF GUESTROOM. BUTTON TO BE TURNED ON/OFF BY SWITCH NOTED BELOW. SEE WIRING DIAGRAM ON SHEET E301.
- SWITCH - PROVIDE A ON/OFF SWITCH TO CONTROL DOORBELL WITH LABEL ON COVER THAT SAYS: "DOORBELL ON/OFF". FIELD VERIFY REQUIREMENTS AND LOCATION WITH ARCHITECT/OWNER. MOUNT SWITCH UNDER SWITCH AT GUESTROOM ENTRY. SEE WIRING DIAGRAM ON SHEET E301.
- TELEPHONE STROBE - INTEGRAL TO GUESTROOM TELEPHONE.
- DOOR BELL STROBE - PROVIDE STROBE LIGHTS AS PER "ADA COMM TELEPHONE NOTIFICATION" NOTE ON THIS SHEET. ONE STROBE IN BATHROOM (MOUNTED IN SAME STUD CAVITY WITH FIRE ALARM STROBE) AND ONE STROBE IN SLEEPING AREA (MOUNTED IN SAME STUD CAVITY WITH FIRE ALARM STROBE AND SMOKE DETECTOR). AT SUITES, PROVIDE ADDITIONAL STROBE IN 1/2 BATH & BEDROOM.
- FIRE ALARM STROBE - PROVIDE TWO EACH FIRE ALARM SYSTEM STROBE LIGHTS. ONE IN BATHROOM (MOUNTED IN SAME STUD CAVITY WITH DOOR STROBE) AND ONE STROBE IN SLEEPING AREA (MOUNTED IN SAME STUD CAVITY WITH FIRE ALARM STROBE AND SMOKE DETECTOR). AT SUITES, PROVIDE ADDITIONAL STROBE IN 1/2 BATH & BEDROOM.

**GENERAL PLAN NOTES**

GENERAL:

- ELECTRICAL CONTRACTOR TO REFER TO ARCHITECTURAL ENLARGED GUESTROOMS PLANS FOR DIMENSIONS OF ALL LIGHT FIXTURES, ELECTRICAL DEVICES, COMMUNICATION DEVICES, AND FIRE ALARM DEVICES.
- ELECTRICAL CONTRACTOR TO REFER TO ARCHITECTURAL INTERIOR GUESTROOM ELEVATIONS FOR MOUNTING HEIGHTS ALL LIGHT FIXTURES, ELECTRICAL DEVICES, COMMUNICATION DEVICES, AND FIRE ALARM DEVICES.
- THE LIGHT SWITCH AND ELECTRICAL OUTLETS IN ALL BATHROOMS SHALL BE LOCATED SO THEY DO NOT CONFLICT WITH THE MIRROR OR TOWEL BAR. COORDINATE WITH ARCHITECT. CONTRACTOR SHALL BE RESPONSIBLE FOR RELOCATING ANY CONFLICTING DEVICES DUE TO FAILURE TO COORDINATE AT HIS OWN COST.

**LIGHTING:**

- VERIFY EXACT HEIGHT AND LOCATION OF ALL WALL MOUNTED LIGHT FIXTURES WITH ARCHITECTURAL PRIOR TO INSTALLATION OF JUNCTION BOXES.
- ALL WALL MOUNTED LIGHT SWITCHES SHALL BE MOUNTED AT 48" A.F.F. TO TOP OF SWITCH.
- ALL GUESTROOM LIGHTING MUST BE LABELED WITH THE ILLUMINATION LITING MUST BE CONTRACT QUALITY OR BETTER AND RATED FOR AT LEAST 1000 HOURS. LIGHT BULBS: FLUORESCENT BULBS (ALLOWED ONLY IN BATHS) MUST BE INSTANT START ELECTRONIC BALLAST.
- LIGHT FIXTURE FINISH MUST BE APPROPRIATE TO THE OVERALL DESIGN OF THE ROOM. A POWDER COAT FINISHED FINISH AND COORDINATE WITH FINISH SCHEDULE. FINISH PLASTIC IS NOT PERMITTED. VERIFY LOCATION OF ALL FIXTURES TO BE PROVIDED WITH A PERFECT FINISH. CONTRACTOR SHALL BE RESPONSIBLE FOR RELOCATING ANY FIXTURES NOT SHOWN AT HIS OWN COST.

**POWER:**

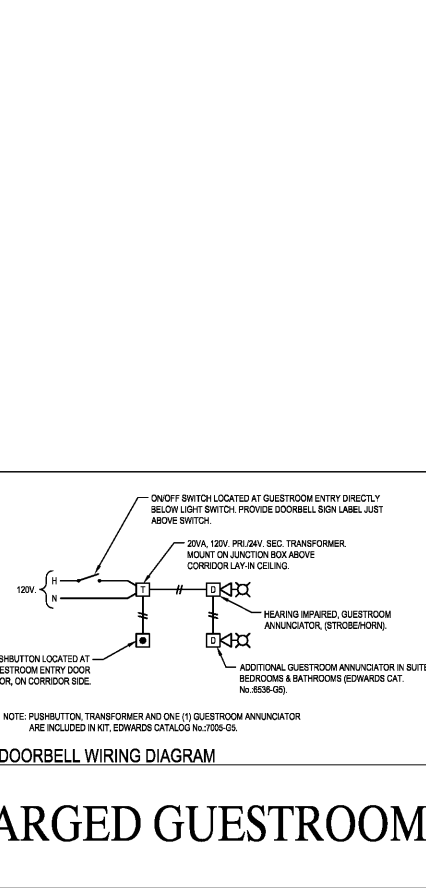
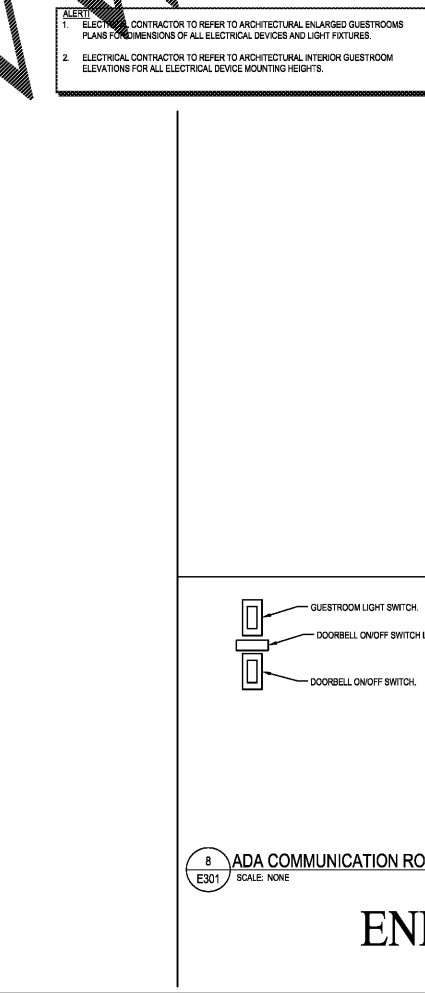
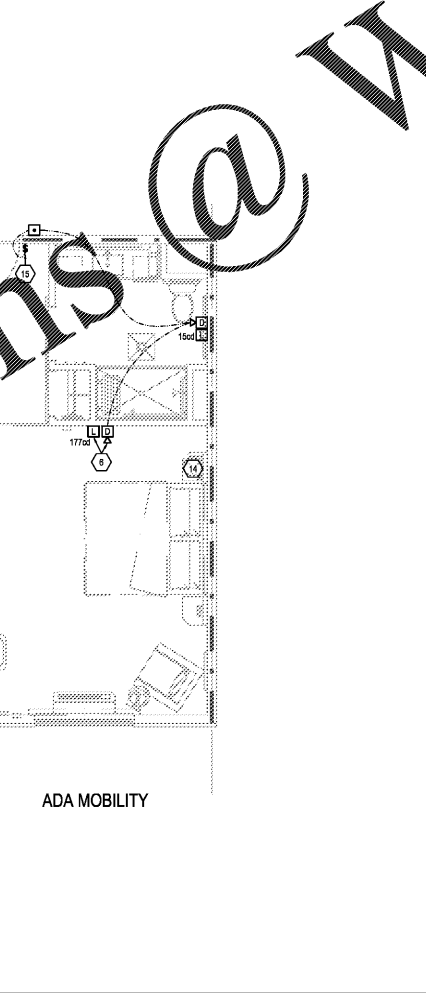
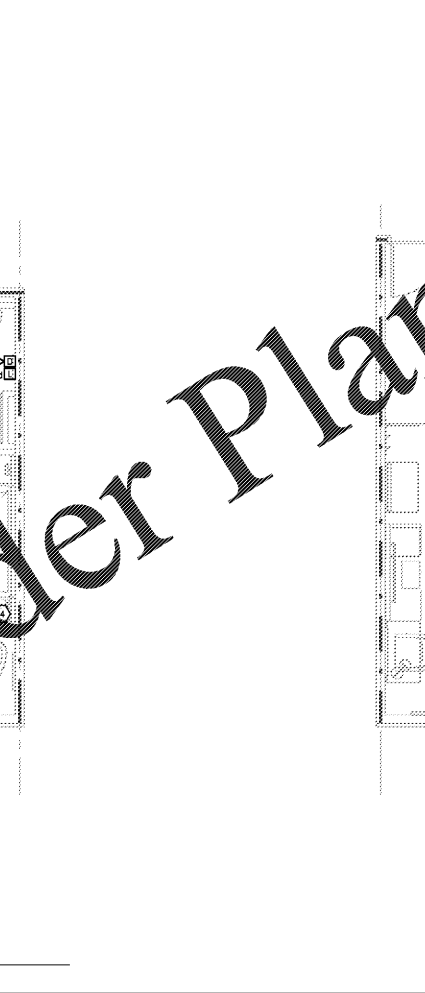
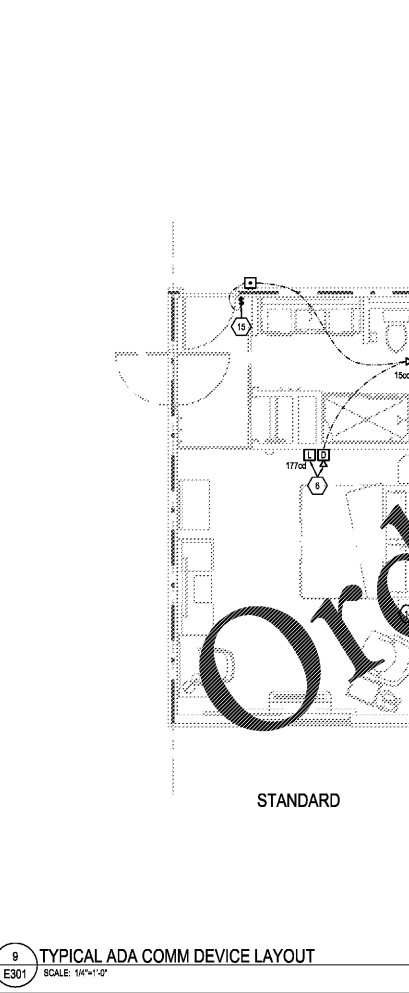
- OUTLETS ON BACK TO BACK WALL SURFACES BETWEEN ROOMS SHALL BE HORIZONTALLY SEPARATED. BACK TO BACK INSTALLATION OF BOXES ON THESE WALLS IS ALLOWED IF THE SUBJECT WALLS ARE FIRE RATED. THE BOXES MUST BE INSTALLED IN FIRE RATED SHEETROCK BOXES SO THAT THE WALL FIRE RATING IS NOT AFFECTED BY THE PENETRATION.
- ALL OUTLETS LOCATED IN GUESTROOMS ARE TO BE AT 18" A.F.F. TO CENTER OF BOX UNLESS OTHERWISE NOTED.
- ALL OUTLETS LOCATED IN GUESTROOMS & GUEST SUITES ARE TO BE TAMPERPROOF.

**COMM/FIRE ALARM:**

- ALL TELEPHONE/DATA OUTLETS ARE TO BE WIRED BACK TO THE COMMUNICATIONS BACKBOARD ON SAME FLOOR AS GUESTROOM. SEE "COMMUNICATIONS SERVICE RISER DIAGRAM" ON SHEET E402.
- ALL RACEWAY FOR TELEPHONE, DATA & CATV TO BE STUBBED OUT OF ROOMS TO ABOVE ACCESSIBLE CEILING IN CORRIDOR. CONTRACTOR FREE TO USE 3/4" ENT INSIDE ROOMS.

**ELECTRICAL KEYED NOTES**

- PROVIDE 120/208V 1Ø ELECTRICAL CONNECTION TO ROOM HVAC UNIT. UNIT BY MECHANICAL WIRING BY ELECTRICAL CONTRACTOR. REFER TO HVAC WIRING TABLE ON SHEET E208 FOR ELECTRICAL INFORMATION.
- PROVIDE SINGLE GANG BOX IN WALL FOR CATV CONNECTION. STUB OUT 6" ABOVE CEILING IN 5/8" TERMINATED WITH INSULATED BUSHING. PROVIDE FULL STRING WITH TAPS AT BOTH ENDS THAT SAY: "CATV".
- WALL MOUNTED SYSTEM SMOKE DETECTOR WITH SOUNDER BASE. DEVICE TO BE ACTIVATED UPON GENERAL BUILDING ALARM, BUT DOES NOT ACTIVATE A BUILDING GENERAL ALARM. SEE "FIRE ALARM SYMBOLS LEGEND" ON SHEET E202 AND GUESTROOM FIRE ALARM NOTE ON THIS SHEET. MOUNT 8" BELOW CEILING TO CENTER OF BOX IN LINE WITH OUTLET BELOW.
- PROVIDE JUNCTION BOX MOUNTED ABOVE CORRIDOR DROP CEILING FOR ROOM CIRCUITRY. ROUTE (Ø) CIRCUITS TO PANEL TO (Ø) EACH 20A/1P BREAKERS FOR LIGHTING & POWER AND (1) 2-POLE BREAKER FOR HVAC UNIT. REFER TO 1Ø SCALE POWER PLANS FOR PANELS AND CIRCUITS TO BE USED PER THIS ROOM. CONTRACTOR IS TO SIZE ALL CONDUITS, WIRE AND JUNCTION BOXES PER NEC REQUIREMENTS. PROVIDE MULTIPLE CONDUIT RUNS AS REQUIRED. NO MORE THAN 7' CURRENT CARRYING (HOT) WIRES PER CONDUIT.
- ALL ROOMS TO HAVE HUBA PER HILTON STANDARDS. IF HARD WIRED INTERNET ACCESS IS DESIRED, A RECEPTACLE MUST BE PLACED @ 36" A.F.F. WHEN OPTIONAL WIRED CONNECTION FOR GUESTS IS ALSO PROVIDED. ANOTHER CAT-RJ45 CABLE TERMINATED ON AN 8-PIN RJ45 FEMALE JACK MUST BE PROVIDED ON THE WALL BELOW DESKWORK AREA. MAINTAIN 6" CLEARANCE FOR ALL OTHER OUTLETS AND DEVICES. A PATCH CORD SHOULD BE PROVIDED AT THE DESKTOP FOR GUESTS CONVENIENCE. PROVIDE (1) CAT-RJ45 CABLE IN EVERY GUESTROOM ON THE WALL BELOW THE DESKWORK AREA. TERMINATED ON AN 8-PIN RJ45 FEMALE JACK FOR WIRELESS ACCESS POINT. WIRELESS ACCESS POINT POWERED WAP, EACH CABLE MUST BE HOMERUN BETWEEN THE GUESTROOM AND THE IDF ON EACH FLOOR. COORDINATE WAP LOCATION WITH CASEGOODS TO AVOID CONFLICT.
- MOUNT DEVICES IN SAME STUD CAVITY. DEVICES TO BE EQUALLY SPACED AT SAME ELEVATION. SEE GUESTROOM ELEVATIONS. MOUNT NEXT TO OTHER DEVICES ON THIS WALL (SEE OTHER GUESTROOM PLANS).
- MECHANICAL THERMOSTAT. SEE "THERMOSTAT WALL BOX MOUNTING DETAIL" ON SHEET E402.
- OUTLETS TO BE MOUNTED SIDE-BY-SIDE UNDER SAME COVER BUT ON SEPARATE CIRCUITS. FIELD COORDINATE WITH FURNITURE INSTALLER. MOUNT DEVICE(S) AT 18" A.F.F. & COORDINATE WITH ACCESS PANELS IN THE FURNITURE.
- ELECTRICAL CONTRACTOR TO COORDINATE WITH ARCHITECTURAL DRAWINGS (PLANS, SECTIONS, & DETAILS) TO INSURE PROPER LOCATIONS OF FIXTURES AND DEVICES. (TYPICAL FOR ALL FIXTURES AND DEVICES.)
- OUTLET FOR USE WITH REFRIGERATOR. MOUNT AT 18" A.F.F. COORDINATE WITH ACCESS PANELS IN THE FURNITURE. PROVIDE LABEL ON FACE OF COVER/PLATE THAT SAYS: "REFRIGERATOR".
- REFER TO "GUESTROOM ADA COMMUNICATIONS DEVICES" NOTES ON THIS SHEET FOR ADDITIONAL DEVICES TO BE PROVIDED IN ALL GUESTROOMS DESIGNED TO BE ADA COMMUNICATION FEATURE ROOMS. SEE ARCHITECTURAL PLANS FOR ADA COMM ROOMS.
- DEVICES MOUNTS IN AN ACCESSIBLE LOCATION BELOW NIGHTSTAND. FIELD COORDINATE WITH FURNITURE INSTALLER. MOUNT DEVICE(S) AT 18" A.F.F. & COORDINATE WITH ACCESS PANELS IN THE FURNITURE.
- MOUNT OUTLET IN LINE BELOW THERMOSTAT AT 18" A.F.F.
- THE GUESTROOM TELEPHONE HAS AN INTEGRAL FLASHING LIGHT. THIS WILL SATISFY THE ADA REQUIRED FOR A TELEPHONE STROBE DEVICE.
- PROVIDE A ON/OFF SWITCH TO CONTROL DOORBELL WITH LABEL ON COVER THAT SAYS: "DOORBELL ON/OFF". FIELD VERIFY REQUIREMENTS AND LOCATION WITH ARCHITECT/OWNER.
- MOUNT DEVICES IN SAME STUD CAVITY. DEVICES TO BE EQUALLY SPACED AT SAME ELEVATION. SEE GUESTROOM ELEVATIONS. RECEPTACLE IS AT STANDARD HEIGHT WHERE ONE IS SHOWN.
- CONTROLS FOR NOTE IS MOTORIZED SHADE WIRE TO SHADE AS PER MANUFACTURER SPECS. FIELD COORDINATE WITH SHADE INSTALLER/PROVIDER.
- PROVIDE 120V CONNECTION TO MOTORIZED SHADE CONTROLS. WIRE AS PER MANUFACTURER SPECIFICATIONS. SHADE TO BE CONTROLLED BY 17 SWITCH AT GUESTROOM ENTRY. COORDINATE LOCATION WITH SHADE MANUFACTURER & LOCATE CONCEALED BY DRAWERY.
- OUTLET IS FOR USE WITH TV & FURNITURE. PROVIDE LABELS ON FACE OF DEVICE. TOP AND BOTTOM IS FURNITURE. WIRE ON CIRCUIT #2 WITH OTHER OUTLETS IN ROOM.
- OUTLET IS FOR USE WITH MICROWAVE AND COFFEE MAKER. TOP RECEPTACLE IS FOR THE MICROWAVE. LABEL AS SUCH. WIRE ON CIRCUIT #3 WITH THE REFRIGERATOR. BOTTOM RECEPTACLE IS FOR THE COFFEE MAKER. LABEL AS SUCH. WIRE ON CIRCUIT #4.



**GUESTROOM ELECTRICAL MOCKUP**

MOCKUP ELECTRICAL ROUGH-IN IN ONE OF EACH TYPE OF GUEST UNIT FOR OWNER'S REVIEW AND COORDINATION WITH FURNITURE. RELOCATE BOXES AS DIRECTED BY OWNER AND CONSTRUCT REMAINING ROOMS AS SHOWN. COORDINATE OFFSET BOXES ON OPPOSITE SIDES OF ONE-HOUR FIRE-RATED STUD WALLS WITH DETAIL A803.01.

**OUTLETS BEHIND MILLWORK**

ELECTRICAL OUTLETS MUST FIT WITHIN THE PARTITIONED SECTION OF MILLWORK AS INDICATED IN ARCHITECTURAL ELEVATIONS. ELECTRICAL CONTRACTOR MUST STAGGER OUTLETS AS NOTES & DETAILS IN THE ELECTRICAL AND ARCHITECTURAL PLANS WHILE MAINTAINING RELATIVE POSITIONS AS SHOWN.

