

T:\2019\19431_Hampton Inn_Ashland City, TN\19431 E201 - E206.dwg, 5/31/2019 9:41:09 AM, hcartj

Order Plans @ www.diline.com

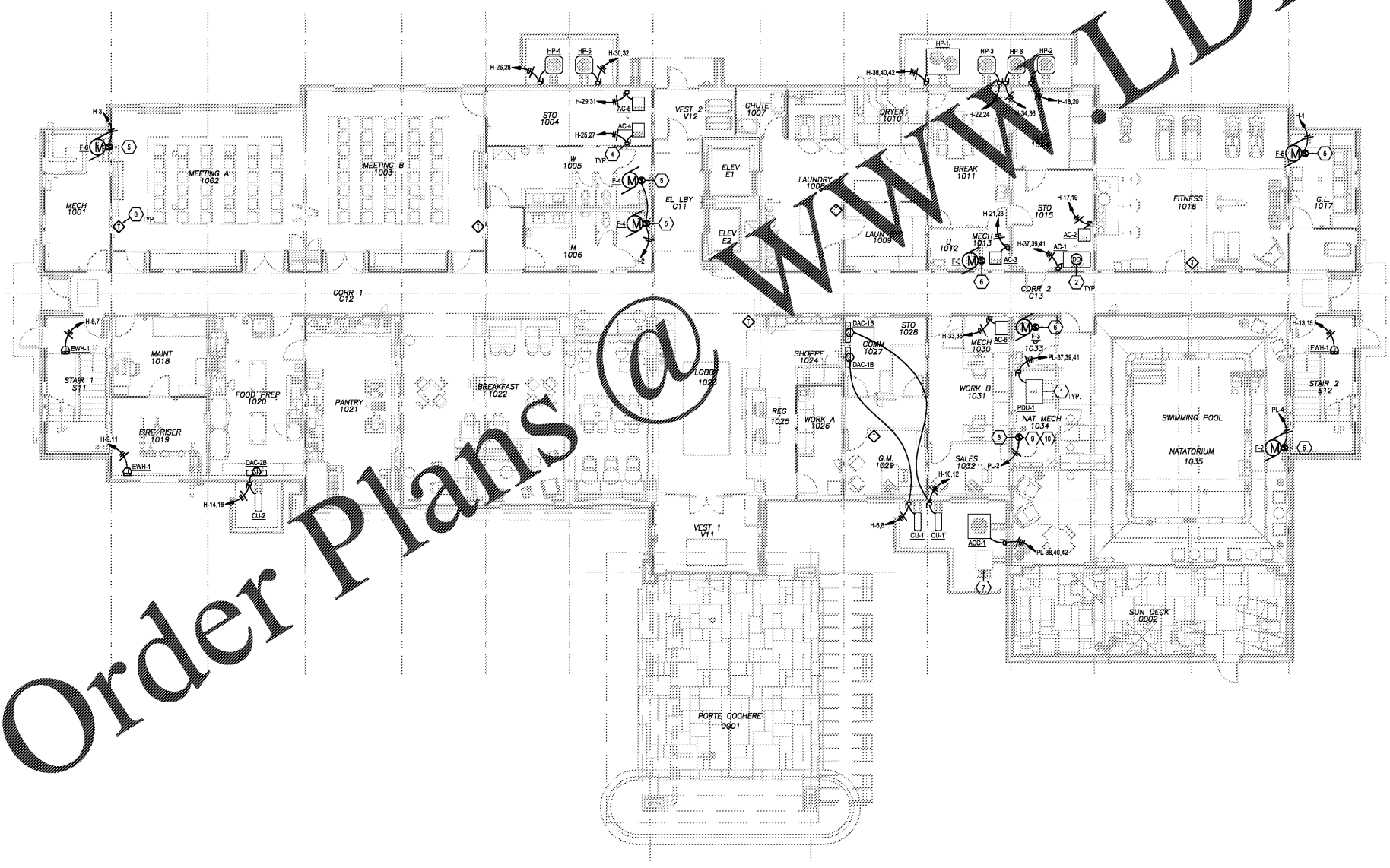
NO.	SYMBOL	DESCRIPTION	QUANTITY	UNIT	TOTAL	AMOUNT	DATE
1	AC-1	AC UNIT	2	EA	2	1,200.00	5/31/19
2	AC-2	AC UNIT	1	EA	1	1,200.00	5/31/19
3	AC-3	AC UNIT	1	EA	1	1,200.00	5/31/19
4	AC-4	AC UNIT	1	EA	1	1,200.00	5/31/19
5	AC-5	AC UNIT	1	EA	1	1,200.00	5/31/19
6	AC-6	AC UNIT	1	EA	1	1,200.00	5/31/19
7	AC-7	AC UNIT	1	EA	1	1,200.00	5/31/19
8	AC-8	AC UNIT	1	EA	1	1,200.00	5/31/19
9	AC-9	AC UNIT	1	EA	1	1,200.00	5/31/19
10	AC-10	AC UNIT	1	EA	1	1,200.00	5/31/19
11	AC-11	AC UNIT	1	EA	1	1,200.00	5/31/19
12	AC-12	AC UNIT	1	EA	1	1,200.00	5/31/19
13	AC-13	AC UNIT	1	EA	1	1,200.00	5/31/19
14	AC-14	AC UNIT	1	EA	1	1,200.00	5/31/19
15	AC-15	AC UNIT	1	EA	1	1,200.00	5/31/19
16	AC-16	AC UNIT	1	EA	1	1,200.00	5/31/19
17	AC-17	AC UNIT	1	EA	1	1,200.00	5/31/19
18	AC-18	AC UNIT	1	EA	1	1,200.00	5/31/19
19	AC-19	AC UNIT	1	EA	1	1,200.00	5/31/19
20	AC-20	AC UNIT	1	EA	1	1,200.00	5/31/19
21	AC-21	AC UNIT	1	EA	1	1,200.00	5/31/19
22	AC-22	AC UNIT	1	EA	1	1,200.00	5/31/19
23	AC-23	AC UNIT	1	EA	1	1,200.00	5/31/19
24	AC-24	AC UNIT	1	EA	1	1,200.00	5/31/19
25	AC-25	AC UNIT	1	EA	1	1,200.00	5/31/19
26	AC-26	AC UNIT	1	EA	1	1,200.00	5/31/19
27	AC-27	AC UNIT	1	EA	1	1,200.00	5/31/19
28	AC-28	AC UNIT	1	EA	1	1,200.00	5/31/19
29	AC-29	AC UNIT	1	EA	1	1,200.00	5/31/19
30	AC-30	AC UNIT	1	EA	1	1,200.00	5/31/19
31	AC-31	AC UNIT	1	EA	1	1,200.00	5/31/19
32	AC-32	AC UNIT	1	EA	1	1,200.00	5/31/19
33	AC-33	AC UNIT	1	EA	1	1,200.00	5/31/19
34	AC-34	AC UNIT	1	EA	1	1,200.00	5/31/19
35	AC-35	AC UNIT	1	EA	1	1,200.00	5/31/19
36	AC-36	AC UNIT	1	EA	1	1,200.00	5/31/19
37	AC-37	AC UNIT	1	EA	1	1,200.00	5/31/19
38	AC-38	AC UNIT	1	EA	1	1,200.00	5/31/19
39	AC-39	AC UNIT	1	EA	1	1,200.00	5/31/19
40	AC-40	AC UNIT	1	EA	1	1,200.00	5/31/19
41	AC-41	AC UNIT	1	EA	1	1,200.00	5/31/19
42	AC-42	AC UNIT	1	EA	1	1,200.00	5/31/19
43	AC-43	AC UNIT	1	EA	1	1,200.00	5/31/19
44	AC-44	AC UNIT	1	EA	1	1,200.00	5/31/19
45	AC-45	AC UNIT	1	EA	1	1,200.00	5/31/19
46	AC-46	AC UNIT	1	EA	1	1,200.00	5/31/19
47	AC-47	AC UNIT	1	EA	1	1,200.00	5/31/19
48	AC-48	AC UNIT	1	EA	1	1,200.00	5/31/19
49	AC-49	AC UNIT	1	EA	1	1,200.00	5/31/19
50	AC-50	AC UNIT	1	EA	1	1,200.00	5/31/19

GENERAL PLAN NOTES

1. THE CONTRACTOR SHALL VERIFY THE LOCATION OF ALL DISCONNECT SWITCHES REQUIRED BY THE PROJECT, PRIOR TO THEIR INSTALLATION. THE INSTALLED LOCATION OF ANY DISCONNECT SHALL NOT IMPED THE ACCESS TO, OR WORKING SPACE AROUND, ANY PIECE OF EQUIPMENT. NEITHER SHALL THE LOCATION CAUSE ANY LOSS OF EQUIPMENT PERFORMANCE DUE TO IMPROVED AIR FLOW, ETC. THIS REQUIREMENT APPLIES REGARDLESS OF THE LOCATION SHOWN FOR THE DISCONNECTS ON THE PLANS. IF THERE IS ANY QUESTION AS TO DISCONNECT LOCATION, THE CONTRACTOR SHALL ASK THE ENGINEER FOR CLARIFICATION PRIOR TO INSTALLATION. IF ANY DISCONNECT IS FOUND TO BE INSTALLED IN SUCH A WAY THAT IT CAUSES ANY PROBLEMS AS MENTIONED ABOVE, IT SHALL BE RELOCATED AT THE EXPENSE OF THE CONTRACTOR. LOCATE DEVICE SO AS TO HAVE 3FT CLEARANCE IN FRONT OF ALL DISCONNECTS.
2. ELECTRICAL CONTRACTOR IS TO PROVIDE SHUTDOWN MEANS AND CONNECTION TO THE FIRE ALARM CONTROL PANEL FOR EACH HVAC UNIT SO THAT THEY WILL ALL BE SHUTDOWN IN THE EVENT OF A GENERAL ALARM. (TYPICAL)
3. ELECTRICAL CONTRACTOR IS TO PROVIDE SINGLE GANG BOXES FLUSH OUT ABOVE CEILING IN AT ALL THERMOSTAT LOCATIONS. REFERENCE MECHANICAL PLANS FOR LOCATIONS. COORDINATE WITH MECHANICAL SYSTEMS PROVIDER FOR ADDITIONAL LOCATIONS WHERE BOXES AND CONDUIT ARE REQUIRED AND FOR MOUNTING HEIGHTS OF ALL DEVICES. SEE DETAIL ON THIS SHEET.
4. LOCATIONS SHOWN FOR MECHANICAL UNITS ARE ONLY APPROXIMATE. CONTRACTOR MUST CONSULT MECHANICAL OR STRUCTURAL DRAWINGS TO DETERMINE ACTUAL UNIT LOCATIONS.
5. ALL APPLIANCES TO HAVE TO HAVE LOCKED SERVICE AT POINT.

ELECTRICAL KEYED NOTES

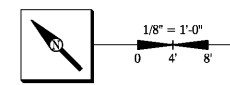
1. LOCATIONS SHOWN ON THIS SHEET ARE ONLY APPROXIMATE. CONTRACTOR MUST CONSULT MECHANICAL OR STRUCTURAL DRAWINGS TO DETERMINE ACTUAL UNIT LOCATIONS. PRIOR TO PENETRATING THROUGH ROOF WITHIN FOOTPRINT OF UNIT FOR USE OF PENETRATING TO UNIT BY OTHERS. PROVIDE PROPER WATERSEAL. (TYPICAL)
2. DUCT SYSTEM PROVIDED AND INSTALLED BY ELECTRICAL CONTRACTOR. ELECTRICAL CONTRACTOR TO COORDINATE WITH MECHANICAL CONTRACTOR FOR CONNECTION TO SHUT-DOWN CONTROLS. PROVIDE ON SUPPLY OR RETURN SIDE ACCORDING TO LOCAL CODES OR AHJ.
3. MECHANICAL THERMOSTAT, SEE "THERMOSTAT WALL BOX MOUNTING DETAIL" ON SHEET 6402.
4. MOUNT DISCONNECT SWITCH AT UNIT AS DESCRIBED IN GENERAL NOTE 1 ON THIS SHEET.
5. PROVIDE 120V, 1Ø ELECTRICAL CONNECTION TO EXHAUST FAN PROVIDED AND INSTALLED BY MECHANICAL AND WIRED BY ELECTRICAL. PROVIDE MOTOR RATED SWITCH AT UNIT TO SERVE AS MEANS OF DISCONNECT FOR UNIT. SWITCH SHALL BE RATED TO HANDLE LOAD OF UNIT. VERIFY LOAD OF UNIT TO BE SUPPLIED WITH MECHANICAL CONTRACTOR PRIOR TO ORDERING SWITCH. FAN TO RUN CONTINUOUS. PROVIDE ALL RELAYS, CONTACTS AND CONNECTIONS.
6. PROVIDE 120V, 1Ø ELECTRICAL CONNECTION TO EXHAUST FAN PROVIDED AND INSTALLED BY MECHANICAL AND WIRED BY ELECTRICAL. PROVIDE MOTOR RATED SWITCH AT UNIT TO SERVE AS MEANS OF DISCONNECT FOR UNIT. SWITCH SHALL BE RATED TO HANDLE LOAD OF UNIT. VERIFY LOAD OF UNIT TO BE SUPPLIED WITH MECHANICAL CONTRACTOR PRIOR TO ORDERING SWITCH. FAN TO BE WIRED & CONTROLLED WITH LIGHTS IN ROOM. PROVIDE ALL RELAYS, CONTACTS AND CONNECTIONS.
7. CONTRACTOR TO PROVIDE 2 1/2"Ø FROM LOCATION FOR POOL HEATER TO POOL ELECTRICAL PANEL. CONDUIT IF FOR USE BY POOL VENDOR WHEN HE ARRIVES ON SITE FOR THIS INSTALLATION. STUB & CAP. PROVIDE PULL ROPE.
8. PROVIDE 120V CONNECTION AT POOL CIRCULATOR PUMP. FIELD COORDINATE LOCATION WITH THE MECHANICAL CONTRACTOR. WIRE AS PER MANUFACTURER SPECS. PROVIDE 2Ø INDUSTRIAL RATED SWITCH IN "HAND" BOX AT UNIT.
9. ALL EQUIPMENT LOCATED IN THIS ROOM TO HAVE A DISCONNECT. CONTRACTOR TO FIELD COORDINATE WITH THE POOL EQUIPMENT INSTALLER & PROVIDE ALL REQUIRED DISCONNECT MEANS.
10. ALL POOL MOTORS MUST BE GFCI PROTECTED. CONTRACTOR TO FIELD COORDINATE WITH THE POOL EQUIPMENT INSTALLER & PROVIDE ALL REQUIRED GFCI PROTECTION.



HAMPTON INN
NEW HOTEL
ASHLAND CITY, TENNESSEE
WWW.DAVIDRCARTER.NET
DAVID R. CARTER AND ASSOCIATES



ISSUE DATE 05-30-19
REVISION LOG



LEVEL 1 HVAC POWER PLAN E206