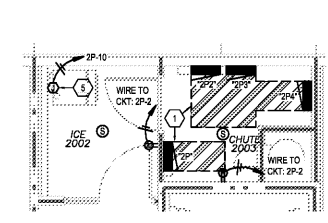
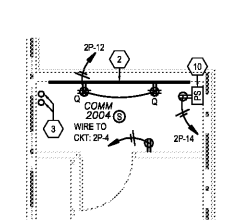


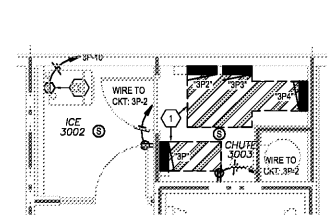
02 | ELEVATOR CONNECTIONS



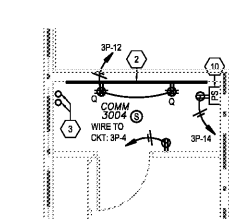
03 | 2ND FLOOR ICE & CHUTE ROOMS



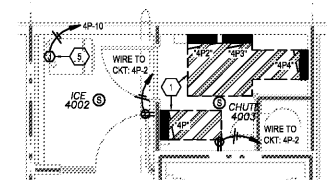
04 | 2ND FLOOR COMM ROOM



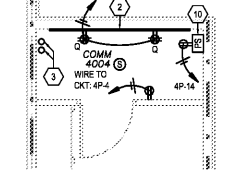
05 | 3RD FLOOR ICE & CHUTE ROOMS



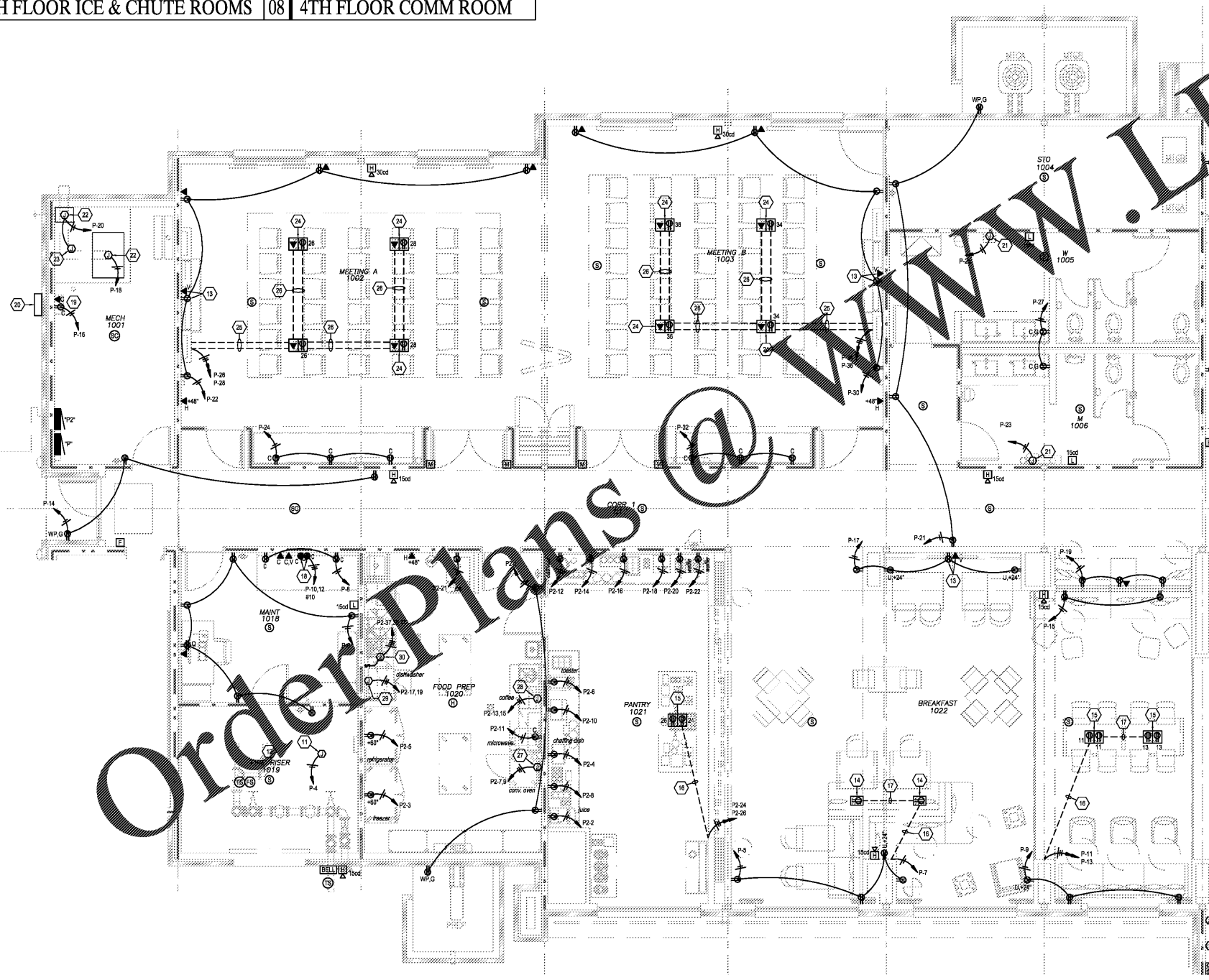
06 | 3RD FLOOR COMM ROOM



07 | 4TH FLOOR ICE & CHUTE ROOMS



08 | 4TH FLOOR COMM ROOM



GENERAL PLAN NOTES

1. THE CONTRACTOR IS TO FIELD COORDINATE THE MOUNTING HEIGHTS & LOCATIONS OF ALL ELECTRICAL DEVICES WITH THE ARCHITECTURAL INTERIOR ELEVATIONS PRIOR TO DOING ANY WORK.

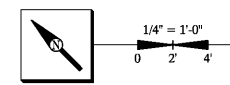
ELECTRICAL KEYED NOTES

1. PROVIDE STRIPING ALONG FLOOR IN FRONT ELECTRICAL PANELS. STRIPING SHOULD EXTEND A MINIMUM OF 3'-0" IN OF PANELS.
2. PROVIDE 4x8x3/4" PLYWOOD AT THIS LOCATION FOR USE WITH SECOND FLOOR TELEPHONE AND CATV EQUIPMENT. PROVIDE #6 SOLID CU TO SERVICE GROUND. PROVIDE TWO EACH 2" FROM MAIN COMMUNICATIONS BACKBOARD ON THE FIRST FLOOR. SEE COMMUNICATIONS SERVICE RISER ON SHEET E402.
3. COMMUNICATIONS CONDUITS BETWEEN FLOORS & UP TO ROOF. SEE COMMUNICATIONS SERVICE RISER ON SHEET E402.
4. SEE ELEVATOR FIRE ALARM RISER ON B012 FOR DEVICES. STRIPING IN THIS AREA.
5. PROVIDE 120V ELECTRICAL CONNECTION TO ICE MACHINE. HARDWARE CONNECTION. WIRE AS PER MANUFACTURER SPECS.
6. PROVIDE 120/208V, 3Ø ELECTRICAL CONNECTION AT ELEVATOR DOOR FRAME FOR USE WITH CONNECTION TO ELEVATOR MOTOR DISCONNECT. DISCONNECT SUPPLIED WITH ELEVATOR EQUIPMENT. CONTRACTOR TO WIRE TO DISCONNECT. COORDINATE LOCATION WITH ELEVATOR INSTALLER. PROVIDE FULL SIZE NEUTRALS AND GROUNDS. PROVIDE FUSED DISCONNECT AS REQUIRED.
7. PROVIDE 120V ELECTRICAL CONNECTION AT ELEVATOR DOOR FRAME FOR USE WITH CONNECTION TO ELEVATOR LIGHTS DISCONNECT. DISCONNECT SUPPLIED WITH ELEVATOR EQUIPMENT. CONTRACTOR TO WIRE TO DISCONNECT. COORDINATE LOCATION WITH ELEVATOR INSTALLER.
8. PROVIDE DATA CONNECTION AT ELEVATOR DOOR FRAME. FIELD COORDINATE LOCATION WITH ELEVATOR INSTALLER.
9. PROVIDE 120/208V, 3Ø ELECTRICAL CONNECTION AT ELEVATOR DOOR FRAME FOR USE WITH CONNECTION TO ELEVATOR MOTOR DISCONNECT. DISCONNECT SUPPLIED WITH ELEVATOR EQUIPMENT. CONTRACTOR TO WIRE TO DISCONNECT. COORDINATE LOCATION WITH ELEVATOR INSTALLER. 4#6 CU IN 1-1/4" C. PROVIDE FULL SIZE NEUTRALS AND GROUNDS. PROVIDE FUSED DISCONNECT AS REQUIRED.
10. FIRE ALARM SYSTEM POWER SUPPLY. PROVIDE 120V CONNECTION.
11. PROVIDE 120V CONNECTION TO SPRINKLER DRY SYSTEM COMPRESSOR. FIELD VERIFY EXACT LOCATION WITH SPRINKLER CONTRACTOR.
12. ALL PUMP ROOM WIRING MUST BE IN RIGID, INTERMEDIATE, OR LIQUID TIGHT FLEXIBLE METAL CONDUIT. LFNC-8, LISTED TYPE MC CABLE, TYPE M CABLE, OR OTHER APPROVED MEANS.
13. RECEPTACLE AND CATV BOX IN WALL AT APPROXIMATELY 60" A.F.F. TO TOP OF BOXES. CONCEAL BEHIND TV. FIELD COORDINATE WITH ARCH INTERIOR ELEVATIONS AND G.C.
14. SINGLE GANG, SHALLOW PVC BOX IN FLOOR. PROVIDE DUPLEX OUTLET IN BOX WITH DUPLEX SCREW TYPE COVER. PROVIDE ALL REQUIRED MATERIALS FOR COMPLETE INSTALLATION OF BOX. COORDINATE EXACT LOCATION WITH FURNITURE.
15. TWO GANG, SHALLOW PVC BOX IN FLOOR. PROVIDE DUPLEX RECEPTACLE IN BOTH. PROVIDE DUPLEX SCREW TYPE COVER FOR EACH SIDE. PROVIDE ALL REQUIRED MATERIALS FOR COMPLETE INSTALLATION OF BOX. COORDINATE EXACT LOCATION WITH TABLE.
16. RUN ONE EACH 1" C. UNDERSLAB FROM WALL FOR POWER WIRING TO FLOOR BOX.
17. RUN ONE EACH 1" C. UNDERSLAB FROM BETWEEN BOXES FOR POWER WIRING.
18. CONTRACTOR TO PROVIDE TWO EACH SPECIAL PURPOSE RECEPTACLES AT THIS LOCATION FOR USE WITH SERVICING OF PTH UNITS. THE RECEPTACLES ARE TO MATCH THE TEMA CONFIGURATION OF THE TWO DIFFERENT TYPES OF PTH UNITS PROVIDED ON THIS PROJECT. MOUNT DEVICES SIDE-BY-SIDE AND WIRE IN SAME CIRCUIT.
19. DEVICE FOR USE WITH IRRIGATION CONTROL PANEL. FIELD VERIFY LOCATION WITH THE IRRIGATION SYSTEM INSTALLER. RUN AN EMPTY 2" C. (WITH PULL ROPE) UNDERSLAB TO NOTE 20 BOX. FIELD VERIFY LOCATION PANEL & NOTE 20 BOX PRIOR TO DOING ANY WORK. PROVIDE PULL STRING IN DATA CONDUIT.
20. ELECTRICAL CONTRACTOR TO PROVIDE & MOUNT HINGED WEATHER-PROOF SURFACE BOX FOR USE WITH SITE IRRIGATION. FIELD VERIFY LOCATION WITH THE IRRIGATION SYSTEM INSTALLER.
21. PROVIDE 120V CONNECTION FLUSH IN WALL FOR USE WITH HAND DRYER. FIELD VERIFY EXACT MOUNTING HEIGHT & LOCATION. WIRE UNIT AS PER MANUFACTURER SPECS. PROVIDE DUPLEX RECEPTACLE AS REQUIRED.
22. PROVIDE 120V CONNECTION TO GAS HOT WATER HEATER. WIRE AS PER MFG SPECS. PROVIDE DUPLEX RECEPTACLE AS REQUIRED.
23. PROVIDE 120V ELECTRICAL CONNECTION TO HOT WATER RECIRC PUMP. FIELD COORDINATE LOCATION WITH PLUMBING CONTRACTOR.
24. TWO GANG DIVIDED, SHALLOW PVC BOX IN FLOOR. ONE SIDE FOR POWER, ONE SIDE FOR DATA. PROVIDE DUPLEX SCREW TYPE COVER FOR POWER SIDE AND PROVIDE COMBINATION SCREW TYPE COVER WITH 1" knock-out for DATA SIDE. PROVIDE DUPLEX RECEPTACLE IN POWER SIDE. DATA JACK AND WIRING BY OTHERS. PROVIDE ALL REQUIRED MATERIALS FOR COMPLETE INSTALLATION OF BOX.
25. RUN TWO EACH 1" C. UNDERSLAB TO WALL. ONE FOR POWER & ONE FOR DATA. DATA CONDUIT STUBS OUT ABOVE CEILING. PROVIDE PULL STRING IN DATA CONDUIT.
26. RUN TWO EACH 1" C. UNDERSLAB BETWEEN BOXES. ONE FOR POWER & ONE FOR DATA. PROVIDE PULL STRING IN DATA CONDUIT.
27. PROVIDE 120/208V, 1Ø CONNECTION FLUSH IN WALL FOR USE WITH CONNECTION OVEN. FIELD VERIFY MOUNTING HEIGHT & LOCATION WITH KITCHEN EQUIPMENT INSTALLER. RUN #8 CU WITH #10 GROUND IN 1" C. TO PANEL. HARDWARE TO UNIT AS PER MANUFACTURER SPECS.
28. PROVIDE 120/208V, 1Ø CONNECTION FLUSH IN WALL FOR USE WITH COFFEE MAKER. FIELD VERIFY MOUNTING HEIGHT & LOCATION WITH KITCHEN EQUIPMENT INSTALLER. RUN #8 CU WITH #10 GROUND IN 1" C. TO PANEL. HARDWARE TO UNIT AS PER MANUFACTURER SPECS.
29. PROVIDE 120/208V, 1Ø CONNECTION FLUSH IN WALL FOR USE WITH DISHWASHER. FIELD VERIFY MOUNTING HEIGHT & LOCATION WITH KITCHEN EQUIPMENT INSTALLER. RUN #8 CU WITH #10 GROUND IN 1" C. TO PANEL. HARDWARE TO UNIT AS PER MANUFACTURER SPECS.
30. PROVIDE 208V, 3Ø CONNECTION TO 2HP GARBAGE DISPOSAL BELOW SINK. UNIT PROVIDED WITH WALL MOUNTED CONTROLLER. MOUNT CONTROLLER ON WALL ABOVE SINK. WIRE UNIT & CONTROLLER AS PER MANUFACTURER SPECIFICATIONS. NOTE CONTROLLER HAS INTEGRAL START & STOP PUSH BUTTONS.

HAMPTON INN
NEW HOTEL
ASHLAND CITY, TENNESSEE
WWW.DAVIDRCARTER-NET
DAVID R. CARTER AND ASSOCIATES



ISSUE DATE 05-30-19
REVISION LOG



ENLARGED POWER PLAN E204

T:\2019\19431_Hampton Inn_Ashland City_TN\19431 E201 - E208.dwg, 5/31/2019 9:42:07 AM, hcart