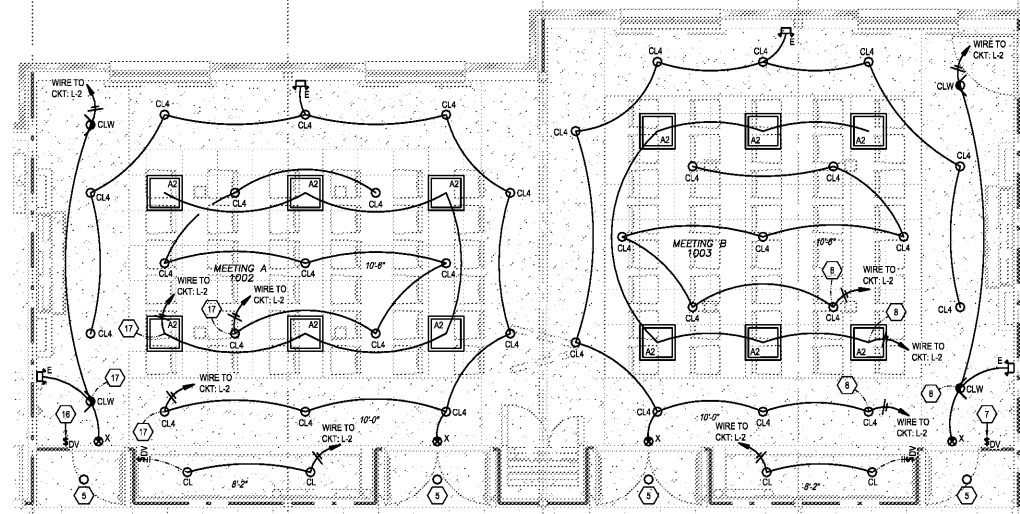
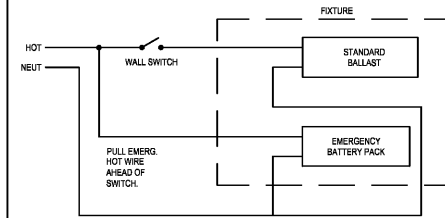


02 DUMPSTER SCREEN / STORAGE



03 ENLARGED LIGHTING PLAN - MEETING ROOMS



DETAIL NOTES  
 1. THIS DETAIL ALSO APPLIES TO FIXTURES WHICH ARE WIRED DIRECTLY FROM A BREAKER WITHOUT A WALL SWITCH IN THIS CASE, WIRE THE "HOT" LEAD FROM THE EMERGENCY BATTERY PACK TO ANOTHER BREAKER IN THE PANEL.  
 2. THIS DETAIL ALSO APPLIES TO EMERGENCY EXIT SIGNS.

NO SCALE

04 EMERGENCY FIXTURE WIRING DETAIL

LANDSCAPE LIGHTING NOTES

1. THE ELECTRICAL CONTRACTOR IS TO REFER TO THE LANDSCAPE LIGHTING PLAN FOR ADDITIONAL REQUIREMENTS FOR LANDSCAPE LIGHTING. COORDINATE ALL REQUIREMENTS WITH THE LANDSCAPE ARCHITECT.

ARTWORK & FOCAL WALLS

1. THE CONTRACTOR IS TO FIELD VERIFY THE LOCATION OF ALL ARTWORK & FOCAL WALLS WITH THE ARCHITECT & INTERIOR DESIGNER PRIOR TO MOUNTING ANY EMERGENCY LIGHTS, ELECTRICAL DEVICES AND FIRE ALARM DEVICES. ADJUST LOCATIONS AS REQUIRED.

GENERAL PLAN NOTES

- REFER TO ARCHITECTURAL REFLECTED CEILING PLANS FOR FIXTURE TYPES AND HEIGHTS.
- ALL OCCUPANCY SENSORS LOCATED IN THE PUBLIC ROOMS AND THE GUEST LAUNDRY ARE TO BE SET WITH A 30A MINUTE DELAY. FIELD VERIFY SETTING OF OTHER OCCUPANCY SENSORS WITH THE ARCHITECT.
- ALL EXIT SIGNS AND EMERGENCY LIGHTS ARE TO BE WIRED FROM THE NEAREST LIGHT FIXTURE AHEAD OF ANY CONTROLS. REFER TO DETAIL ON SHEET E101.

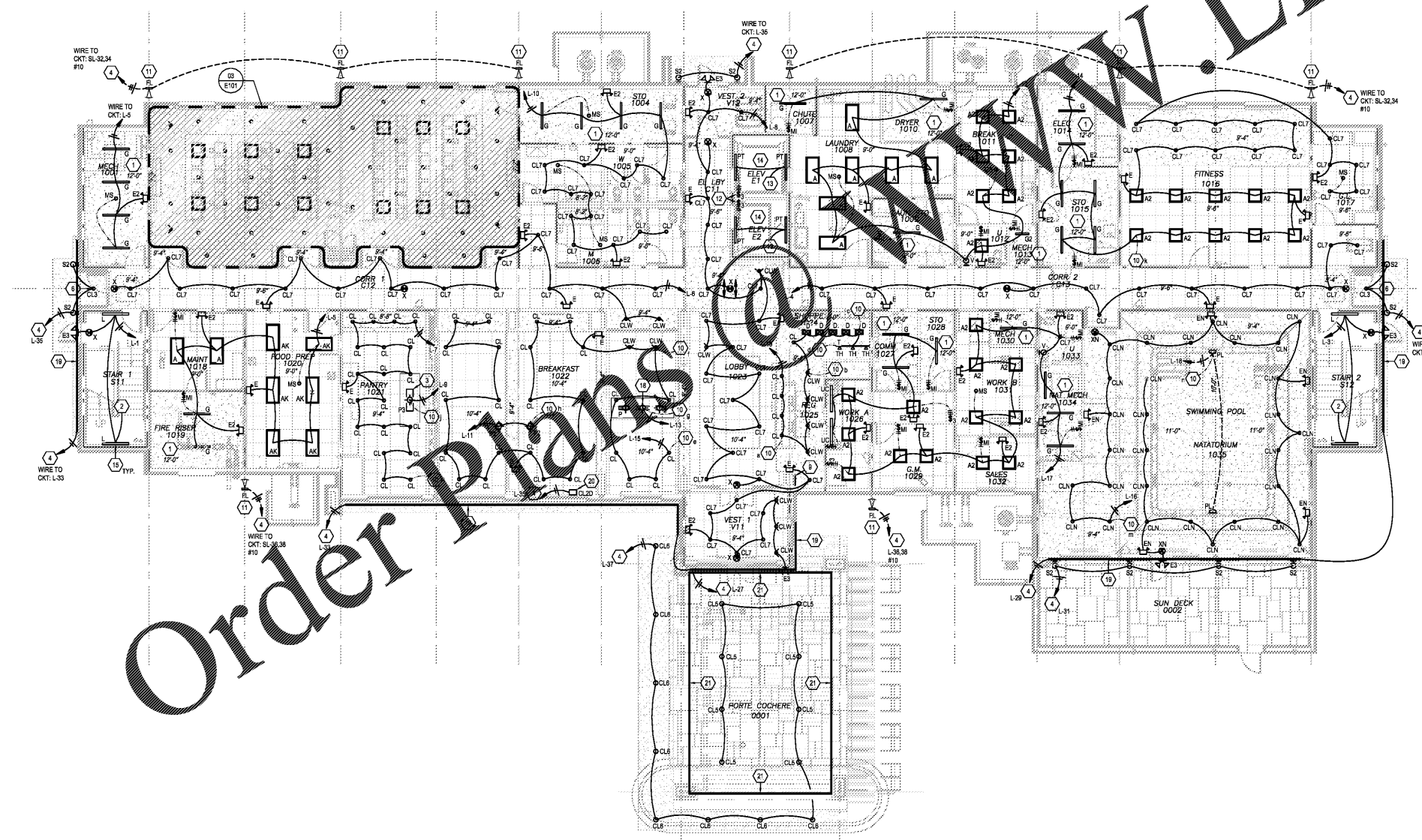
ELECTRICAL KEYED NOTES

- FIXTURES IN THIS ROOM ARE TO BE SUSPENDED FROM STRUCTURE. BOTTOM OF FIXTURE TO BE 8'-0" FROM CEILING. PROVIDE AIRCRAFT CABLE SUSPENSION. CEILING IS UNDERSIDE OF BENCH. ALL CONDUIT & BUSES AT CEILING IN THIS ROOM ARE TO BE SURFACE MOUNTED. PAINT AS DIRECTED BY THE ARCHITECT. COORDINATE WITH ANY EQUIPMENT OR DUCT IN THIS ROOM.
- CIRCUIT UP TO LIGHTING FIXTURES ON LEVEL 2. SEE LEVEL 2 LIGHTING PLAN ON SHEET E102.
- CENTER OVER ISLAND TABLE. FIELD COORDINATE LOCATION WITH CASEWORK INSTALLER.
- RUN CIRCUIT THRU LIGHTING CONTRACTOR. CONTRACTOR IS TO BE CONTROLLED BY TIMELOCK & PHOTOCELL ASSEMBLY.
- FIXTURE IS WIRED WITH CORRIDOR LIGHTING. SEE 01E101.
- FIXTURE IS EQUIPPED WITH AN EMERGENCY BATTERY PACK.
- LOCATION FOR MEETING ROOM 'B' SWITCHES. PROVIDE SWITCHES AS FOLLOWS:
 

TYPE	CONTROLS
0-10V DIMMER	"A2" FIXTURES, ON OX1: L-2
0-10V DIMMER	"C4" FIXTURES IN LOW CEILING, ON OX1: L-2
0-10V DIMMER	"C4" FIXTURES IN HIGH CEILING, ON OX1: L-2
0-10V DIMMER	"CLW" FIXTURES, ON OX1: L-2
- MOUNT SINGLE POLE SWITCHES GANGED TOGETHER UNDER SAME COVER. STACK AS REQUIRED DUE TO SPACE CONSTRAINTS. MOUNT DIMMERS SIDE-BY-SIDE. STACK AS REQUIRED. FIELD VERIFY SPACE CONSTRAINTS. LABEL AS DIRECTED BY OWNER.
- RUN TO SWITCH AT MEETING 'A' ENTRY. SEE KEY NOTE 7 ON THIS SHEET.
- LOCATION FOR HOUSE LIGHTING CONTROLS. PROVIDE SWITCHES AS FOLLOWS:
 

ID	TYPE	CONTROLS
a	0-10V DIMMER	"C" FIXTURES AT REG, ON OX1: L-19
b	0-10V DIMMER	"CLW" FIXTURES AT REG, ON OX1: L-19
c	0-10V DIMMER	"C" & "D" FIXTURES AT MARKET, ON OX1: L-19
d	0-10V DIMMER	TRACK FIXTURES AT MARKET, ON OX1: L-19
e	0-10V DIMMER	"C" FIXTURES IN BREAKFAST, ON OX1: L-15
f	0-10V DIMMER	"C" FIXTURES IN BREAKFAST, ON OX1: L-15
g	0-10V DIMMER	"F" FIXTURES AT BREAKFAST COMM TABLE, ON OX1: L-13
h	DIMMER	"F2" FIXTURES AT BREAKFAST TABLES, ON OX1: L-11
i	0-10V DIMMER	"C" FIXTURES IN PANTRY, ON OX1: L-7
j	DIMMER	"F2" FIXTURE IN PANTRY, ON OX1: L-4
k	SINGLE POLE	FITNESS LITS, ON OX1: L-14
m	SINGLE POLE	POOL LIGHTS, ON OX1: L-16
n	SINGLE POLE	POOL UNDERWATER LIGHTS, ON OX1: L-16
- MOUNT SINGLE POLE SWITCHES GANGED TOGETHER UNDER SAME COVER. STACK AS REQUIRED DUE TO SPACE CONSTRAINTS. MOUNT DIMMERS SIDE-BY-SIDE. STACK AS REQUIRED. FIELD VERIFY SPACE CONSTRAINTS. LABEL AS DIRECTED BY OWNER.
- CIRCUIT TO BE CONTROLLED BY SWITCH LOCATED AT FRONT DESK AREA. SEE KEY NOTE 4 ON THIS SHEET.
- GROUND MOUNTED FLOOD LIGHT. AIM TO ILLUMINATE BUILDING TO THE SATISFACTION OF THE OWNER. PROVIDE ALL REQUIRED MATERIALS FOR A COMPLETE INSTALLATION. REFER TO DETAIL #1 ON SHEET E102. FIELD COORDINATE WITH LANDSCAPING. SIDEWALK & HVAC UNITS. SETBACK FROM BUILDING AS PER MANUFACTURER GUIDELINES.
- LOCATE LIGHT SWITCH ADJACENT TO PPT LADDER. FIELD VERIFY LOCATION OF LADDER. SWITCH IS TO OPERATE WITH SWAY AT TOP OF SHAFT (SEE E103). ALL LIGHTS IN SHAFT ARE TO TURN ON/OFF TOGETHER.
- CONNECT TO GFCI OUTLET IN BOTTOM OF SHAFT. SEE POWER PLANS. ALSO WIRE UP TO LIGHTS AT TOP OF SHAFT (SEE E103).
- LIGHT FIXTURES IN THE BOTTOM OF THE SHAFT ARE TO BE LOCATED SO AS TO BE MOUNTED ON THE WALL BELOW THE BOTTOM MOST POINT OF THE ELEVATOR CAR. FIELD COORDINATE WITH ELEVATOR INSTALLER AND ELEVATOR PLANS.
- MOUNT ALL TYPE "L" FIXTURES LOCATED IN STAIRWELLS AT 7'-0" A.F.F. OF LANDING. TYPICAL.
- LOCATION FOR MEETING ROOM 'A' SWITCHES. PROVIDE SWITCHES AS FOLLOWS:
 

TYPE	CONTROLS
0-10V DIMMER	"R2" FIXTURES IN LOW CEILING, ON OX1: L-12
0-10V DIMMER	"R2" FIXTURES IN HIGH CEILING, ON OX1: L-12
0-10V DIMMER	"B2" FIXTURES, ON OX1: L-12
0-10V DIMMER	"R2" FIXTURES IN HIGH CEILING, ON OX1: L-12
0-10V DIMMER	"B2" FIXTURES, ON OX1: L-12
- MOUNT SINGLE POLE SWITCHES GANGED TOGETHER UNDER SAME COVER. STACK AS REQUIRED DUE TO SPACE CONSTRAINTS. MOUNT DIMMERS SIDE-BY-SIDE. STACK AS REQUIRED. FIELD VERIFY SPACE CONSTRAINTS. LABEL AS DIRECTED BY OWNER.
- RUN TO SWITCH AT MEETING 'A' ENTRY. SEE KEY NOTE 16 ON THIS SHEET.
- CENTER FIXTURE OVER COMMUNITY TABLE. FIELD COORDINATE LOCATION WITH CASEWORK INSTALLER.
- TYPE "L" LED TAPE LIGHT IN TRACK RUNNING HORIZONTALLY ALONG SOFFIT. SEE ALSO ARCHITECTURAL RCP. MOUNT POWER SUPPLY ABOVE NEAREST LAY-IN CEILING OR ON WALL IN NEAREST CLOSET.
- LOCATION FOR THE REMOTE DRIVER FOR THE TEN TYPE "OLF" CAN LIGHTS. MOUNT DRIVER ON WALL ABOVE CEILING AND RUN WIRING UP INSIDE OF EXTERIOR WALL TO FIXTURES. SEE SHEET E102 & E104 FOR FIXTURE LOCATIONS. RUN #12 TO EACH FIXTURE. FIXTURES ARE WIRED IN SERIES. FEED FROM DRIVER TO LAST FIXTURE. NOT TO EXCEED 200'.
- TYPE "L" LED TAPE LIGHT IN TRACK RUNNING HORIZONTALLY ALONG PERIMETER OF PORTE COCHERE SOFFIT. SEE ALSO ARCHITECTURAL RCP. MOUNT POWER SUPPLY ABOVE NEAREST LAY-IN CEILING OR ON WALL IN NEAREST CLOSET.
- FIELD COORDINATE LOCATION OF SWITCH WITH G.C. LOCATE SWITCH ON ACTIVE SIDE OF DOOR.



Order Plans

WWW.LDILine.com



ISSUE DATE 05-30-19  
 REVISION LOG

HAMPTON INN  
 NEW HOTEL  
 ASHLAND CITY, TENNESSEE  
 WWW.DAVIDRCARTER.NET  
 DAVID R. CARTER AND ASSOCIATES



PROJECT 00755

LEVEL 1 LIGHTING PLAN E101